



# Product Change Notification

<b>Date Issued :</b>	September 28, 2022	<b>PCN Number :</b>	512666
<b>Reason for Change :</b>	Capacity change or tool replacement		
<b>Description of Change :</b>	This notice is to inform you that Molex Lincoln Nebraska is adding replacement tooling that will affect the product listed. New tooling will be exact replica of current tooling. There will be no change to the product Fit, Form, Function or Appearance when compared to current tooling. Current tooling will be taken out of service once new tooling is qualified.		
<b>Reason for Short Notice :</b>	Corrective Actions		
<b>Assessment of Change :</b>	First Article Inspection		
<b>Planned Implementation Date :</b>	January 20, 2023		
<b>Sample Availability Date:</b>	October 21, 2022		
<b>Internal Molex Qualification Date :</b>	January 06, 2023		
<b>Last date to request Samples by Customer :</b>	December 09, 2022		
<b>Traceability Code Markings / Date :</b>	Product made after planned implementation date can contain the change		

Before Picture

■ 5566

— Mini-Fit Vertical Header

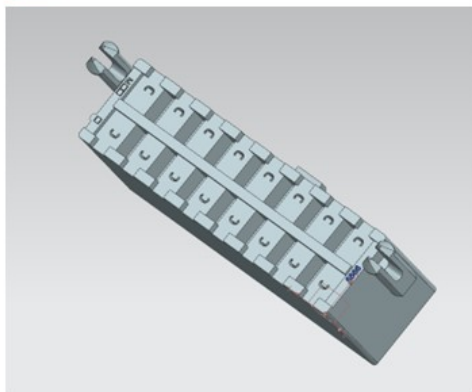


Photo is used as representation of product only. Mini-Fit Vertical Header may come in different circuit sizes and colors

After Picture

## Overview

- To ensure exceptional quality, Molex Lincoln Nebraska is going to replace the tooling which produces the affected part numbers
  - New tooling will be an exact replica of current tooling
  - Tooling being added to keep up with current and future demand
- There is NO impact to Fit, Form or Function
- Samples available upon request after date shown above
- Part Numbers Impacted
  - See attached list

# RELEASED

You may address inquires regarding this PCN by clicking on the below link  
[mailto:pcn\\_coordinator@molex.com?subject=PCN\\_Notification:512666](mailto:pcn_coordinator@molex.com?subject=PCN_Notification:512666)  
or contact your Local Sales Engineer.

Note: While responding, please retain " PCN Notification : **PCN Notification: 512666** " in the e-mail Subject line for faster response.

[Molex, LLC](#)  
2222 Wellington Court  
Lisle, IL 60532  
TEL (800) 786-6539  
[www.molex.com](http://www.molex.com)

**PCN No Part List**

512666 [0039299163](#)

512666 [0039299165](#)

512666 [0039299167](#)

512666 [0039299169](#)

512666 [0444721651](#)

512666 [0460151603](#)

512666 [0460151607](#)

512666 [0460151609](#)