

RCE-01-G-02.00-BC

RCE, RCEF SERIES

IP68 SEALED ETHERNET PLUG

SPECIFICATIONS

For complete specifications see www.samtec.com?RCE

- Insulator Material:** Black Liquid Crystal Polymer
- Contact:** Phosphor Bronze
- Operating Temp Range:** -40 °C to +75 °C
- Latch:** BeCu
- Wire:** 24 AWG

Mates with: RPBE-01, RPCE

Audible click positive latching

24 AWG

50 μ" (1.27 μm) Gold on contacts

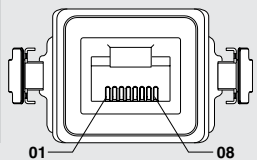
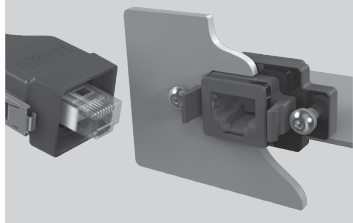
Meets IP68 requirements for dust and waterproof sealing when mated or with dust cap

ALSO AVAILABLE (MOQ Required)

- Other wire lengths

RCE	CABLE STYLE	PLATING	WIRE LENGTH	END OPTION
	-01 = Outdoor UL	-G = 50 μ" (1.27 μm) Gold on contact	-02.00 = (2 m) 78.74" -03.00 = (3 m) 118.11" -05.00 = (5 m) 196.85" Standard lengths	-D = Double End (Both ends sealed) -BC = Blunt Cut (One end sealed)

APPLICATION



FIELD TERMINATION KIT

- Ethernet Field Termination Kit available for long cable run and small-opening applications so housings can be customer-installed after the runs are complete.
- RCEF-G-01 Series (For cable outside diameter range of 5.00-5.75 mm)
- RCEF-G-02 Series (For cable outside diameter range of 5.75-6.50 mm)

DUST CAPS

STYLE	RCE
-01	DCA-RCE-01-01

Note: Meets IP68 requirements for dust and waterproof sealing when mated or with dust cap.

