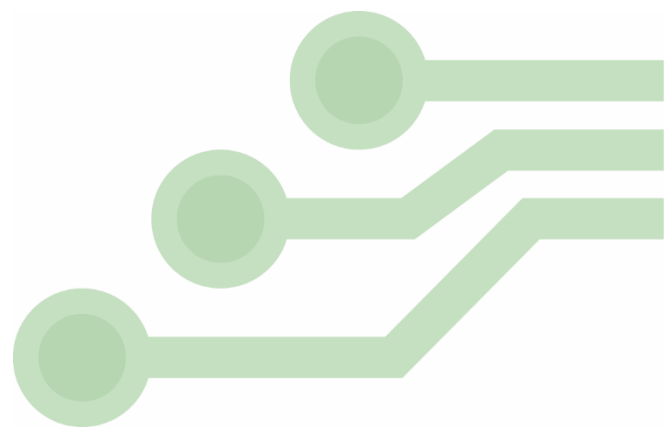


2661 Galvin Court  
Elgin, IL 60124, USA  
847.844.8795  
[nhtech@newhavendisplay.com](mailto:nhtech@newhavendisplay.com)



January 16, 2019

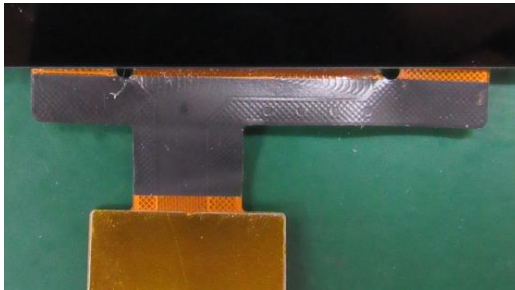
## Engineering Change Notification

**To:** All Relevant Customers  
**From:** Newhaven Display Engineering

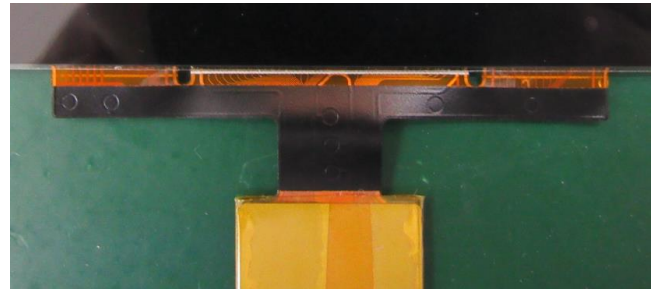
This notice is to inform you of a change to the following products:

**NHD-10.1-1024600AF-ASXV#-CTP**  
**NHD-10.1-1024600AF-LSXV#-CTP**  
**NHD-10.1-1024600MB-LSXV-CTP**  
**NHD-10.1-HDMI-A-RSXV-CTU**

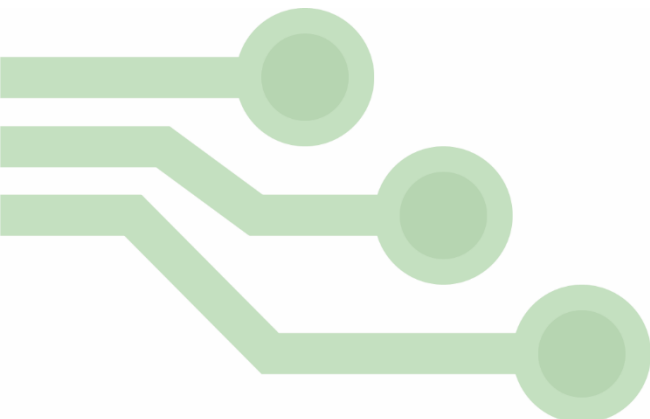
The Capacitive Touch Panel (CTP) for these displays has been redesigned to center the FPC cable with additional anchor points, and to add TVS diodes on the I/O lines.



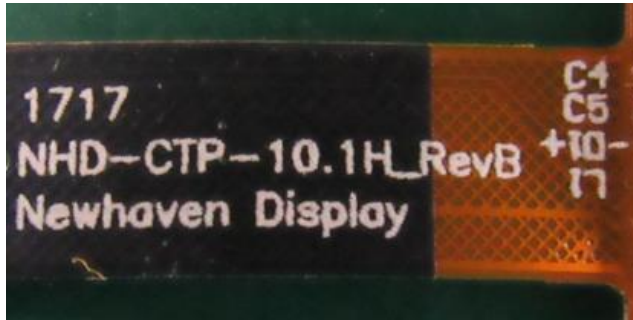
**OLD FPC DESIGN**



**NEW FPC DESIGN**



Aside from the difference in appearance, the revision number printed on the back of the FPC cable can also be used to confirm which version you have.



**OLD FPC DESIGN (Labeled as RevB)**



**NEW FPC DESIGN (Labeled as Rev2A)**

We understand that each project is unique and therefore recommend you evaluate new samples for validation.

Please visit [www.newhavendisplay.com](http://www.newhavendisplay.com) or email [nhtech@newhavendisplay.com](mailto:nhtech@newhavendisplay.com) for further information or assistance with this change.