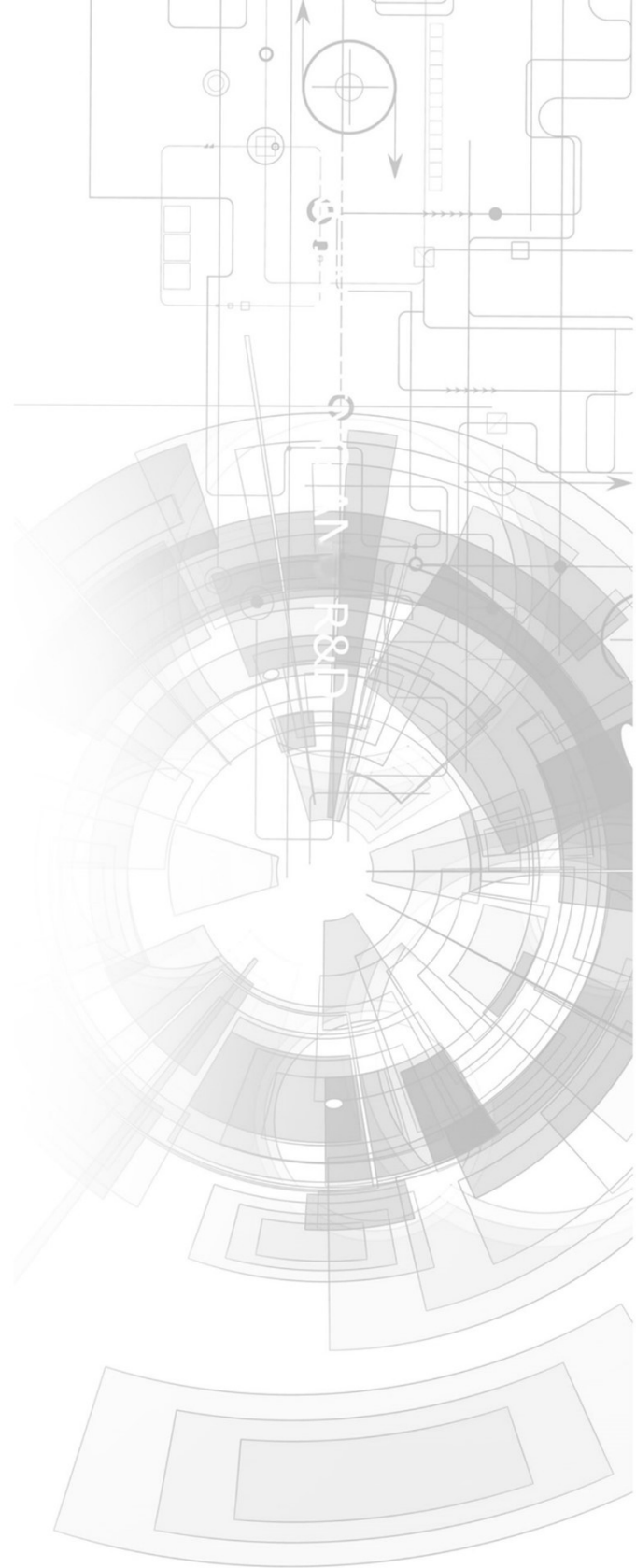


4DBEZEL-43

uLCD-43PT Bezel
4DLCD-FT843 Bezel



Datasheet

Revision 1.4

Copyright © 2023 4D Systems

Content may change at any time. Please refer to the resource centre for latest documentation.

Contents

1. Description	3
2. Features	4
3. uLCD-43PT Assembly	6
4. 4DLCD-FT843 Assembly	7
5. Mechanical Dimensions - uLCD-43PT	8
6. Mechanical Dimensions - 4DLCD-FT843	9
7. Revision History	10

1. Description

The 4D Systems 4.3" Display Bezel is a plastic bezel for the uLCD-43PT and 4DLCD-FT843 display modules.

This bezel provides a sleek cover to the display module and also provides an easy method to panel-mount the display module into an enclosure. The bezel mounts the display module, while also providing a mounting solution into a panel, keeping it all securely together.

Spring clips attach to the bezel in four locations, and hold it tightly to the enclosure/wall panel, offering a range of panel thickness from 1mm to 2.5mm without the need to add washers. If a panel thicker than 2.5mm is required, washers can be placed under the spring clip, however, this is not recommended practice.

 **Note**

This bezel is only designed for indoor use. It is not weather-tight, nor does it offer any IP rating. It should only be used indoors in clean environments as it offers little protection to the circuitry of moisture or particles.

Bezels are available in Black or White.



Bare 4.3" Bezel - Front



Bare 4.3" Bezel - Back

 **ORDERING INFORMATION**

4DBEZEL-43-B (Black Version)

4DBEZEL-43-W (White Version)

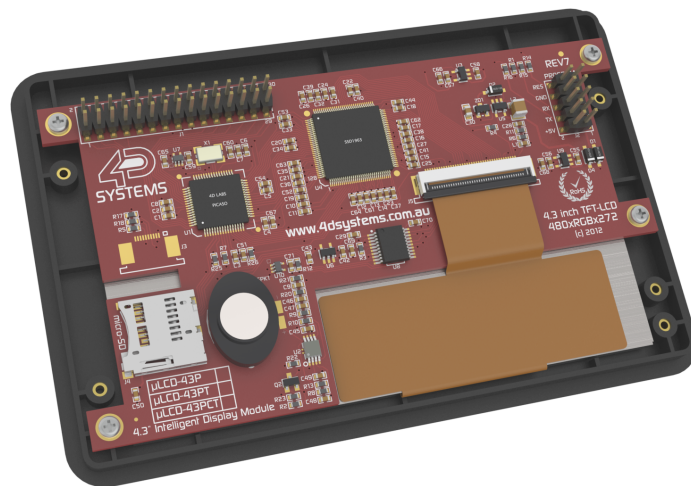
Packaging: Module sealed in antistatic foam padded 4D Systems Box

2. Features

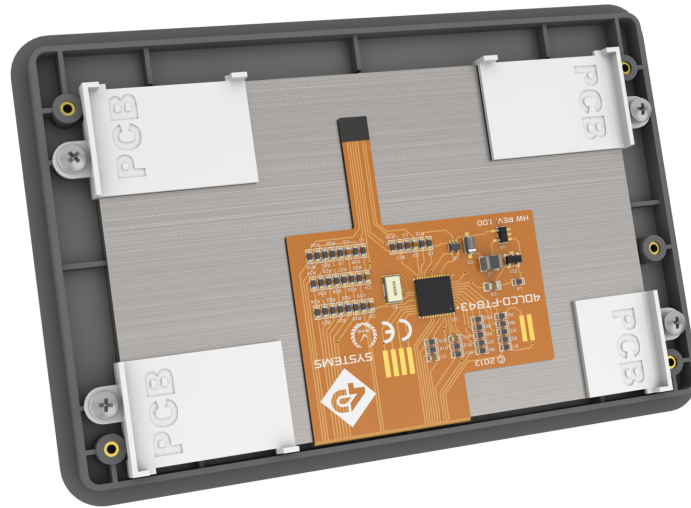
- Plastic 4.3" Bezel designed for panel mounting a uLCD-43PT or a 4DLCD-FT843
- A simple cut-out is required, and no mounting holes require to be drilled into the panel
- Brass mounting inserts in the rear of the bezel
- 4 x Spring Clips for attaching the bezel to the panel
- 8 x M2 mounting screws and washers included



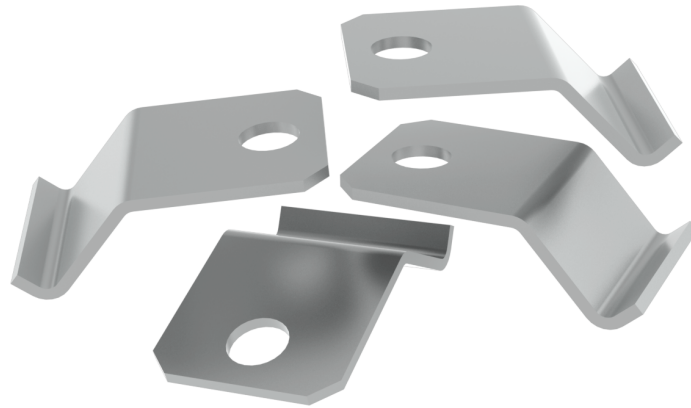
uLCD-43PT/4DLCD-FT843 Mounted in 4.3" Bezel - Front



uLCD-43PT Mounted in 4.3" Bezel - Back



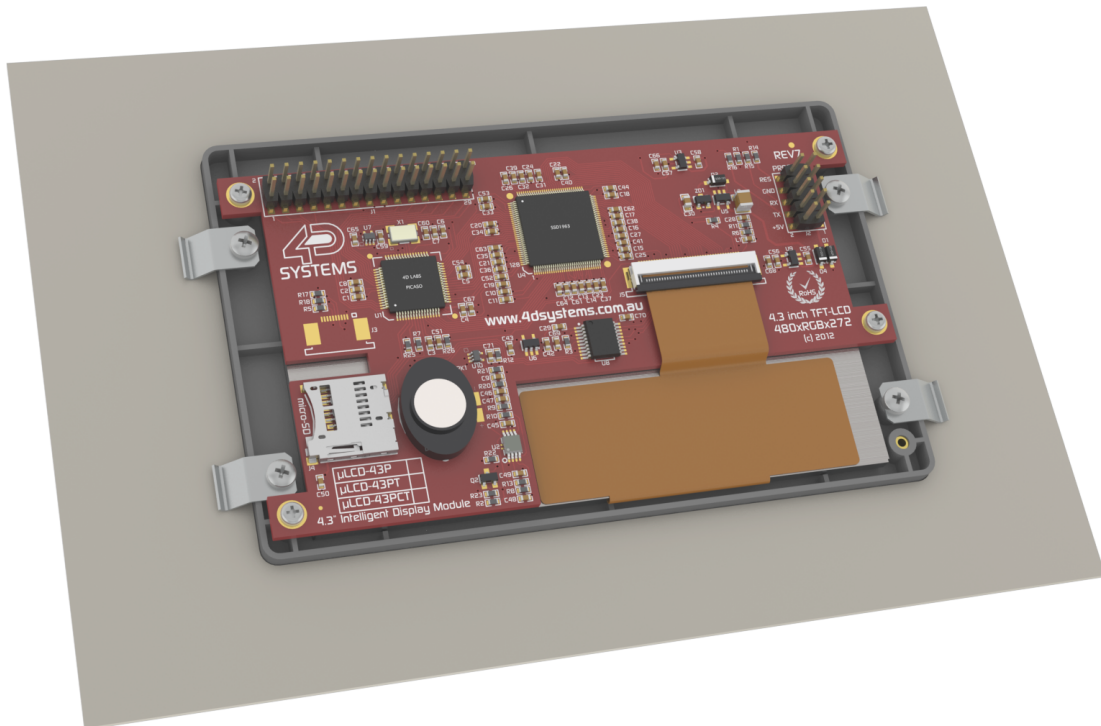
4DLCD-FT843 Mounted in 4.3" Bezel - Back



Spring Clips

3. uLCD-43PT Assembly

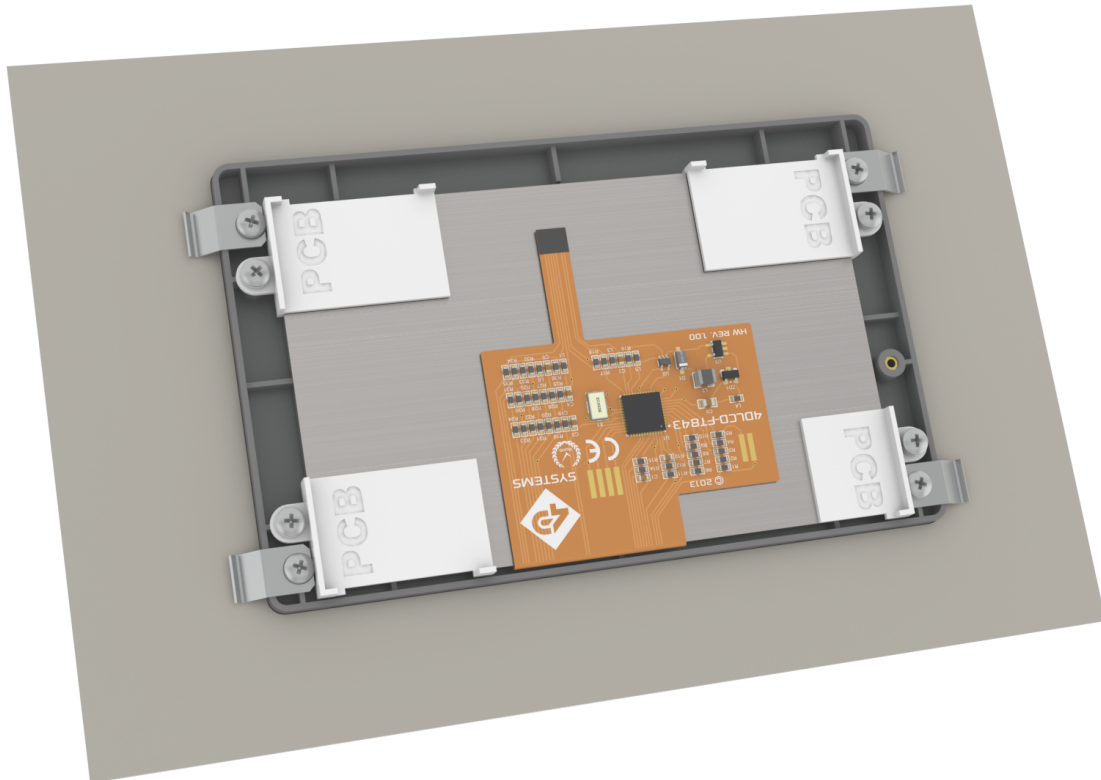
1. Place the uLCD-43PT face down into the bezel, taking care of the orientation of the display so the mounting tabs of the display line up with the brass inserts in the bezel.
2. Insert 4 of the screws with 4 of the washers into the mounting tabs to secure the display on the bezel. Nip the screws up but take care, not to over-tighten or damage may be done to the bezel.
3. Place the assembled bezel into the Panel/Enclosure, taking note of the orientation of the display.
4. Place a washer on one of the remaining screws, followed by a spring clip, and attach it to one of the brass inserted holes on the bezel, allowing the spring clip to work against the panel, holding the bezel firmly in place.
5. Repeat for the remaining screws.
6. The bezel should now be securely fitted to the panel, and the uLCD-43PT should be securely fitted to the bezel.



*uLCD-43PT secured to the 4.3" Bezel, and Bezel secured to the Panel/
Enclosure using the four spring clips*

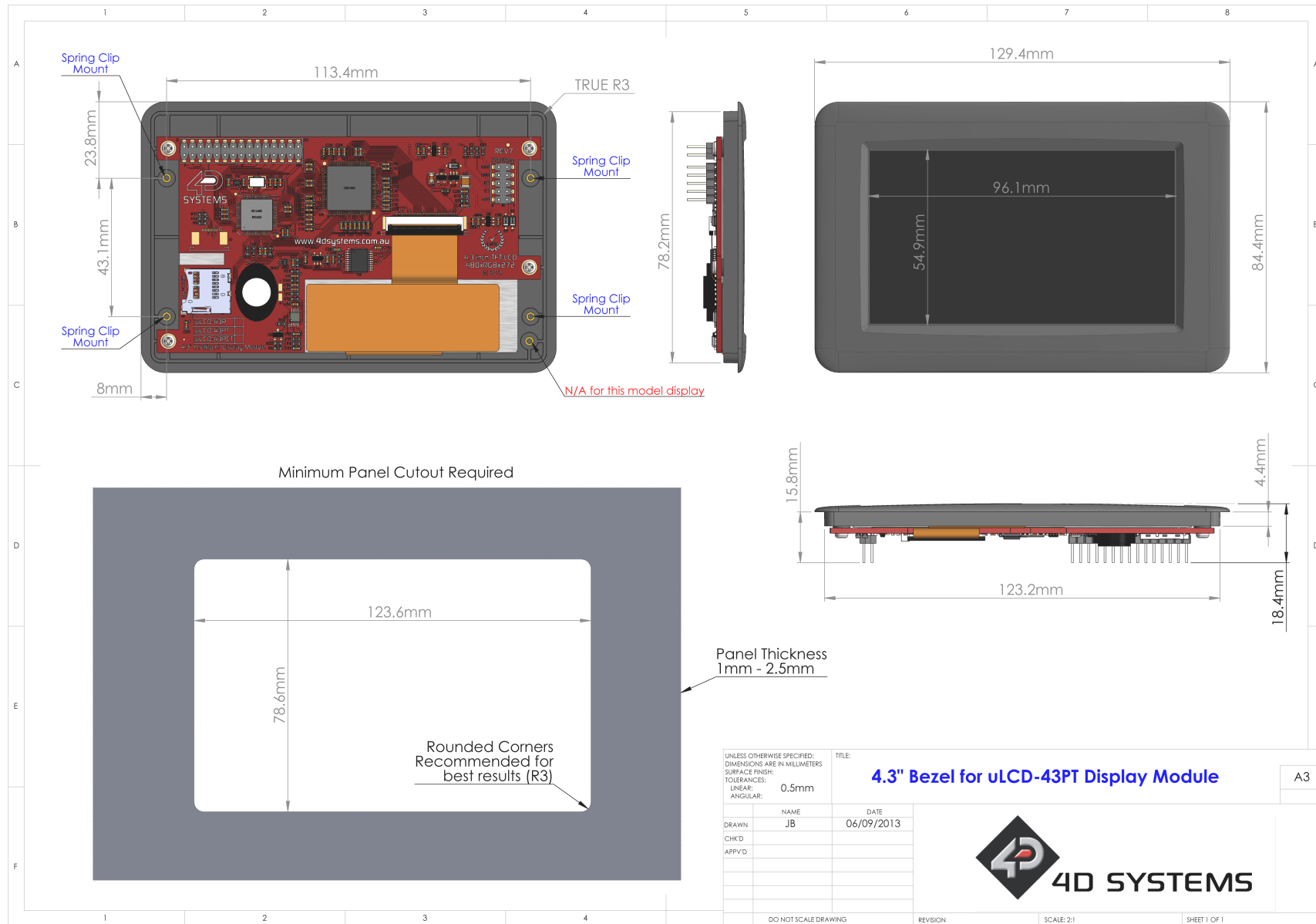
4. 4DLCD-FT843 Assembly

1. Attach the four plastic corner plates to the back of the display, where the indent 'PCB' lettering is facing upwards. Note the short corner plate goes on the bottom right corner as depicted in the image below.
2. Place the 4DLCD-FT843 with corner places attached face down into the bezel, taking care of the orientation of the display so the mounting tabs of the corner plates line up with the brass inserts in the bezel.
3. Insert 4 of the screws with 4 of the washers into the mounting tabs to secure the display on the bezel. Nip the screws up but take care, not to over-tighten or damage may be done to the bezel.
4. Place the assembled bezel into the Panel/Enclosure, taking note of the orientation of the display.
5. Place a washer on one of the remaining screws, followed by a spring clip, and attach it to one of the brass inserted holes on the bezel, allowing the spring clip to work against the panel, holding the bezel firmly in place.
6. Repeat for the remaining screws.
7. The bezel should now be securely fitted to the panel, and the 4DLCD-FT843 should be securely fitted to the bezel.
8. Customers' application board can then be mounted to the corner plates or directly onto the back of the LCD, and attached to the flex of the 4DLCD-FT843.

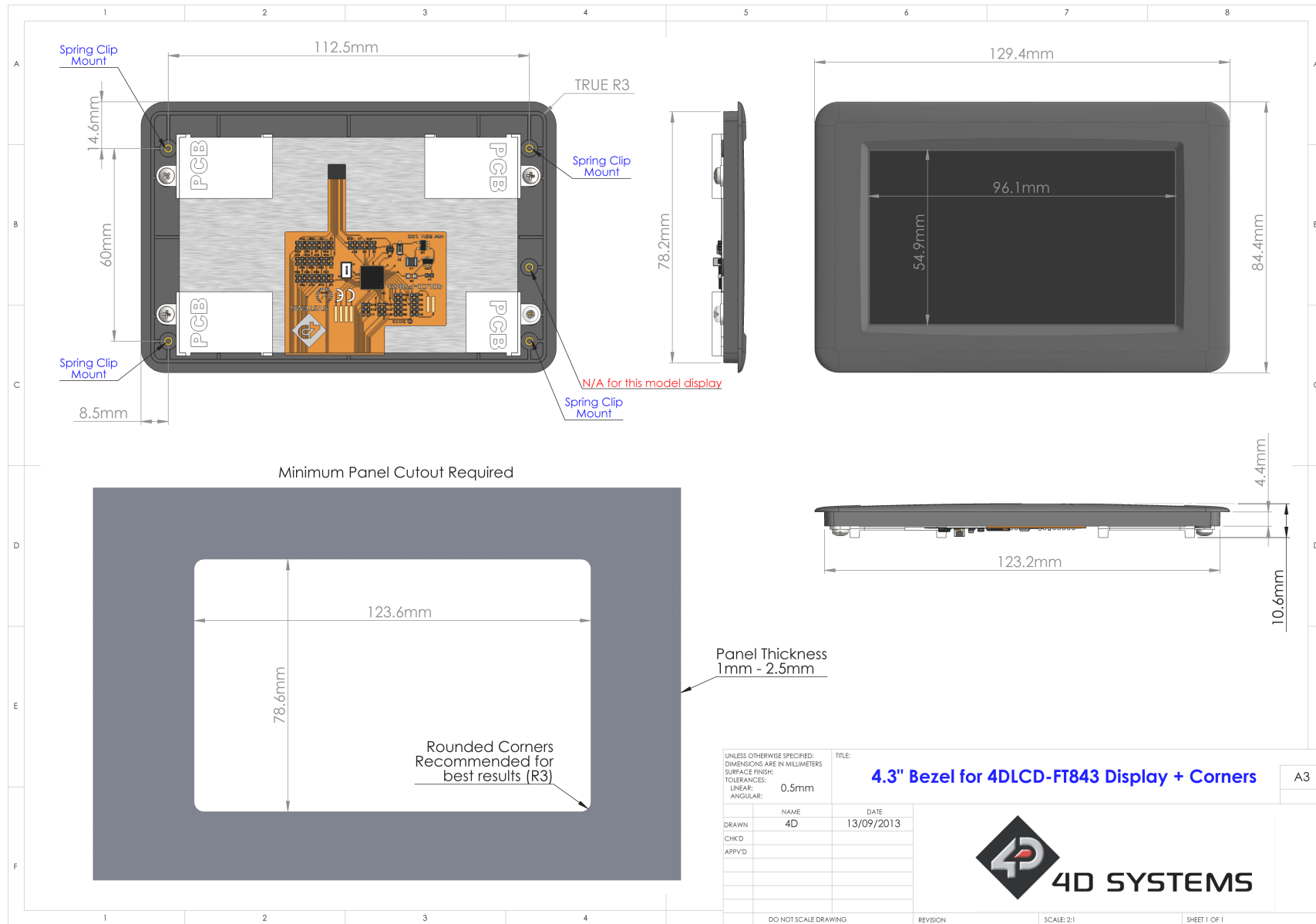


4DLCD-FT843 secured to the 4.3" Bezel, and Bezel secured to the Panel/Enclosure using the four spring clips


5. Mechanical Dimensions - uLCD-43PT



6. Mechanical Dimensions - 4DLCD-FT843



7. Revision History

 Datasheet Revision		
Revision Number	Date	Description
1.4	02/01/2023	Modified datasheet for web-based documentation