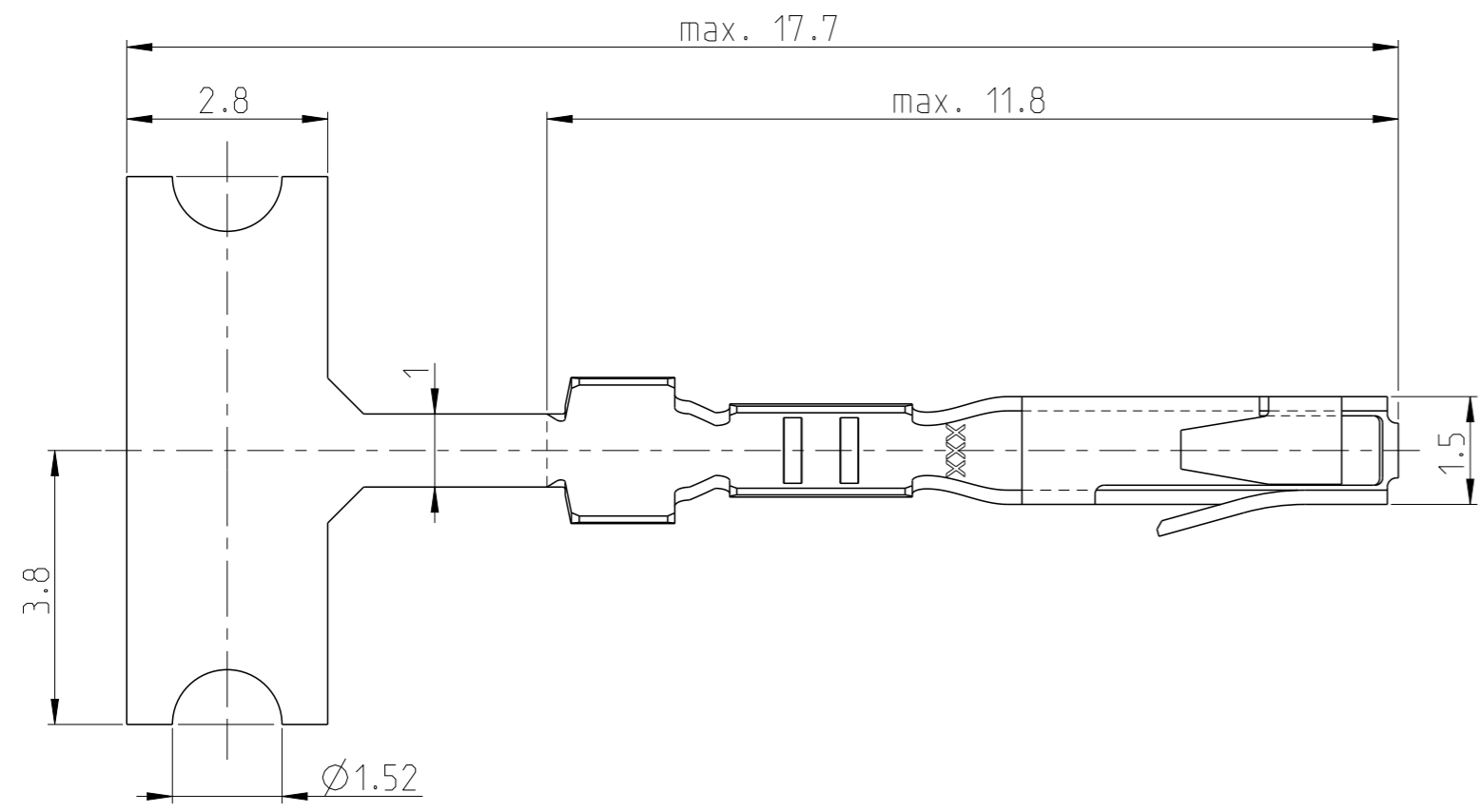


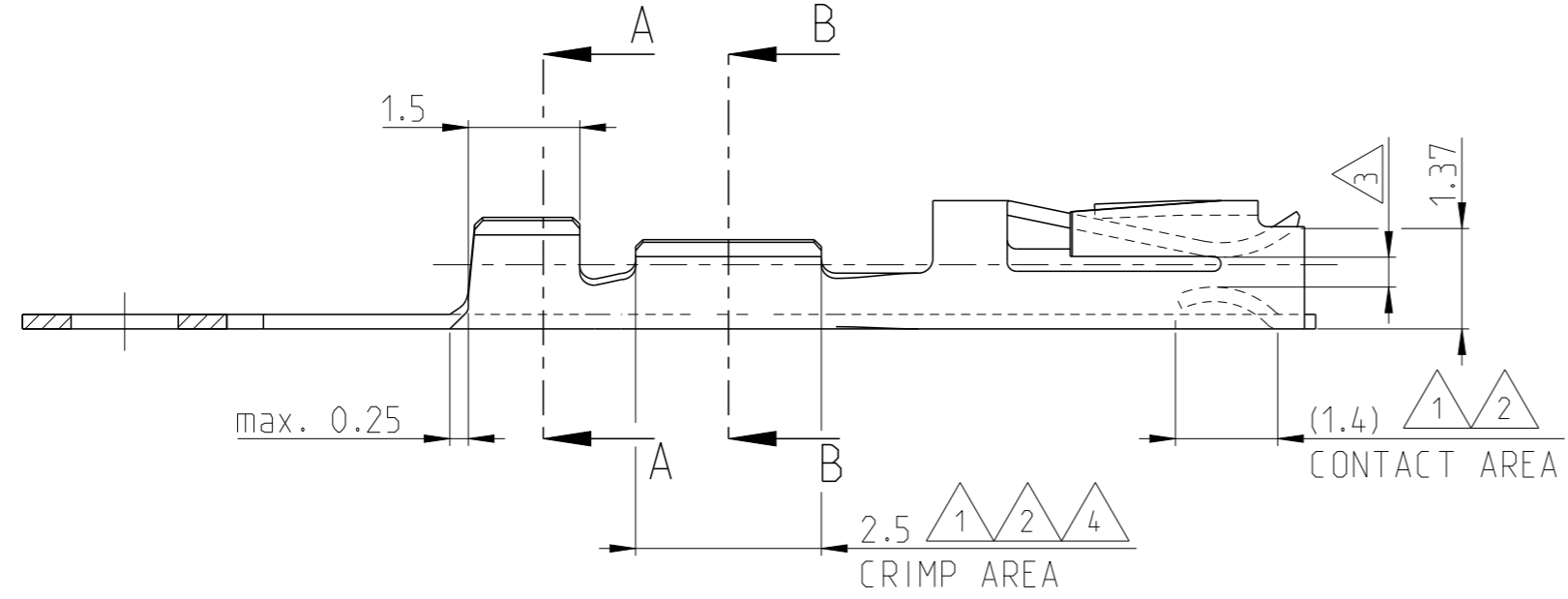
REVISIONS					
P	LTR	DESCRIPTION	DATE	DWN	APVD
	E1	ECO-09-021510	15SEP2009	KK	AEG
	E2	NEW DRAWING CREATED IN CREO	26JUNE2014	JBH	BRUN
	E3	ECN-22-143896	21MAR2022	ES	SZ
	E4	REVISED AS PER ECR-23-168476	09MAR2023	JK	JK



NOTES:

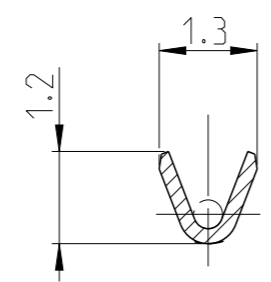
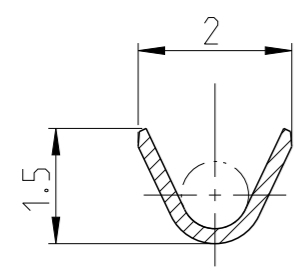
- 1 UNDERCOATING: 0.8 µm NICKEL OVERALL.
CONTACT AREA: 0.8 µm GOLD.
CRIMP AREA: GOLDFLASH
- 2 UNDERCOATING: 0.8 µm NICKEL OVERALL.
CONTACT AREA: 1.25 µm GOLD.
CRIMP AREA: GOLDFLASH
- 3 SUITABLE FOR 0.64x0.64 POST.
- 4 UNDERCOATING: 0.8 µm NICKEL OVERALL.
CONTACT AREA: 0.4 µm GOLD.
CRIMP AREA: GOLDFLASH.
- 5 ADVANCED PROD. NRS. FOR DIN 41612 PART 5 SPEC.
- 6 OBSOLETE PARTS: OBSOLETE CIS STREAMLINING PER D.RENAUD/D.SINISI.

WIRE RANGE:
28-32 AWG
0.03-0.09 mm²
INSULATION RANGE:
0.5-1.02 DIA.



SECTION A-A

SECTION B-B



5 167042-4	4	PHOSPHORBRONZE	6 167041-7
6 167042-2	2		6 167041-4
167042-1	1		167041-2
LOOSE PIECE NUMBER	PLATING	MATERIAL	STRIPNUMBER

THIS DRAWING IS A CONTROLLED DOCUMENT.		DWN J.Gibbels 22FEB1991
DIMENSIONS: mm		CHK R.v.Lokven
TOLERANCES UNLESS OTHERWISE SPECIFIED: n. ISO 8015 n. ISO 2768-mH		APVD R.Smeets
0 PLC	±	PRODUCT SPEC
1 PLC	±	APPLICATION SPEC
2 PLC	±	
3 PLC	±	
4 PLC	±	
ANGLES	±	
MATERIAL	FINISH	WEIGHT
-	-	-

STE TE Connectivity

NAME: STANDARD TANDEM SPRING RECEPTACLE

SIZE A3	CAGE CODE 00779	DRAWING NO C=167041	RESTRICTED TO
CUSTOMER DRAWING		SCALE 10:1	SHEET 1 OF 1

REV E4