

# eHPCE<sup>®</sup> Enhanced High Power Card Edge Connectors

Configured Part Number: 10137755-001020ALF

PN (Part Number)	10137755-001020ALF
SERIES (Base Number)	eHPCE
TYPE1 (Conector Type)	Receptacle - Straddle Mount (STMT)
UPC (Ultra Power Contacts)	00
PC (Power Contacts)	10
SC (Signal Contacts)	20
PKO (Polarization Key Option)	Y - Yes
TLG (Tail Length / mm)	Not Available
TT (Tail Type)	Not Available
ME (Mounting Ears)	Y - Yes
RG (Rear Guide)	Y - Yes
COL ( )	Not Available
HPT (Host PCB Thickness / mm)	0
A (Dim A / mm)	55.3
B (Dim B / mm)	42.22
C (Dim C / mm)	47.8

Interactive 3D graphic, click to activate and rotate.

## CLASSIC HPCE<sup>®</sup> WITH ENHANCED PERFORMANCE

eHPCE<sup>®</sup> connectors offer a 15% increase in power density with the same footprint as classic HPCE<sup>®</sup>. The all-new power contact design offers lower contact resistance and higher current carrying capacity compared to classic HPCE<sup>®</sup> connectors. eHPCE<sup>®</sup> connectors are designed to extend the life of power supplies using card edge output power connectors.

- Same mating footprint as classic HPCE<sup>®</sup>
- Enhanced housing design
- GCS<sup>®</sup> plated contacts deliver lower resistance than gold
- Maximum continuous operating temperature increased to +85°C
- Low-halogen housing material
- Vertical, right angle and straddle mount configurations available

NEW



**TARGET MARKETS**





## TECHNICAL INFORMATION

### MATERIAL

- Housing: High Temperature Thermoplastic, UL 94 V-0, Blue
- Terminal: High Conductivity Copper Alloy
- Contact Area
  - Power: GCS<sup>®</sup> plating over Nickel
  - Signal: GXT<sup>®</sup> plating over Nickel

### MECHANICAL PERFORMANCE

- Contact Wipe Distance: 4.8mm (power), 3.5mm (signal)
- Durability: 200 mating cycles
- Mating Force: 10N per Ultra-power contact, 5N per Mid-power contact

### ELECTRICAL PERFORMANCE

- Current Rating: Up to 42A per contact (30°C temperature rise in still air)
- Operating Voltage: 250V (power), 30V (signal)
- Dielectric Withstanding Voltage: 1000V

### ENVIROMENTAL

- Operating Temperature: -55°C to +105°C
- RoHS Information: this product is compatible according to the European Union Directive 2011/65/EU

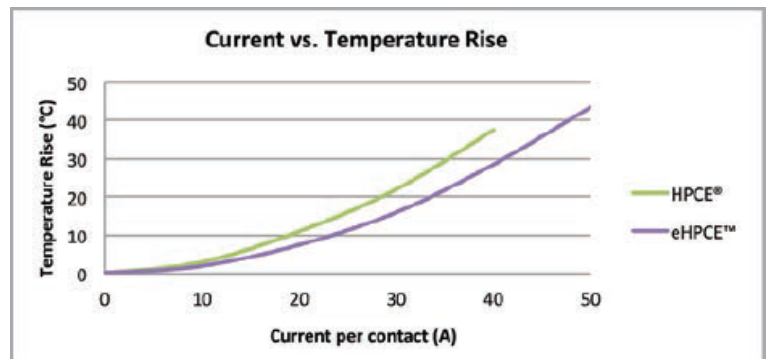
### SPECIFICATIONS

- Product Specification: GS-12-1362
- Application Specification: GS-20-0469

### PACKAGING

- Trays

### TEMPERATURE RISE CURVE



### TARGET MARKETS/APPLICATIONS



Datacom/Networking  
Equipment Switches  
Telecom

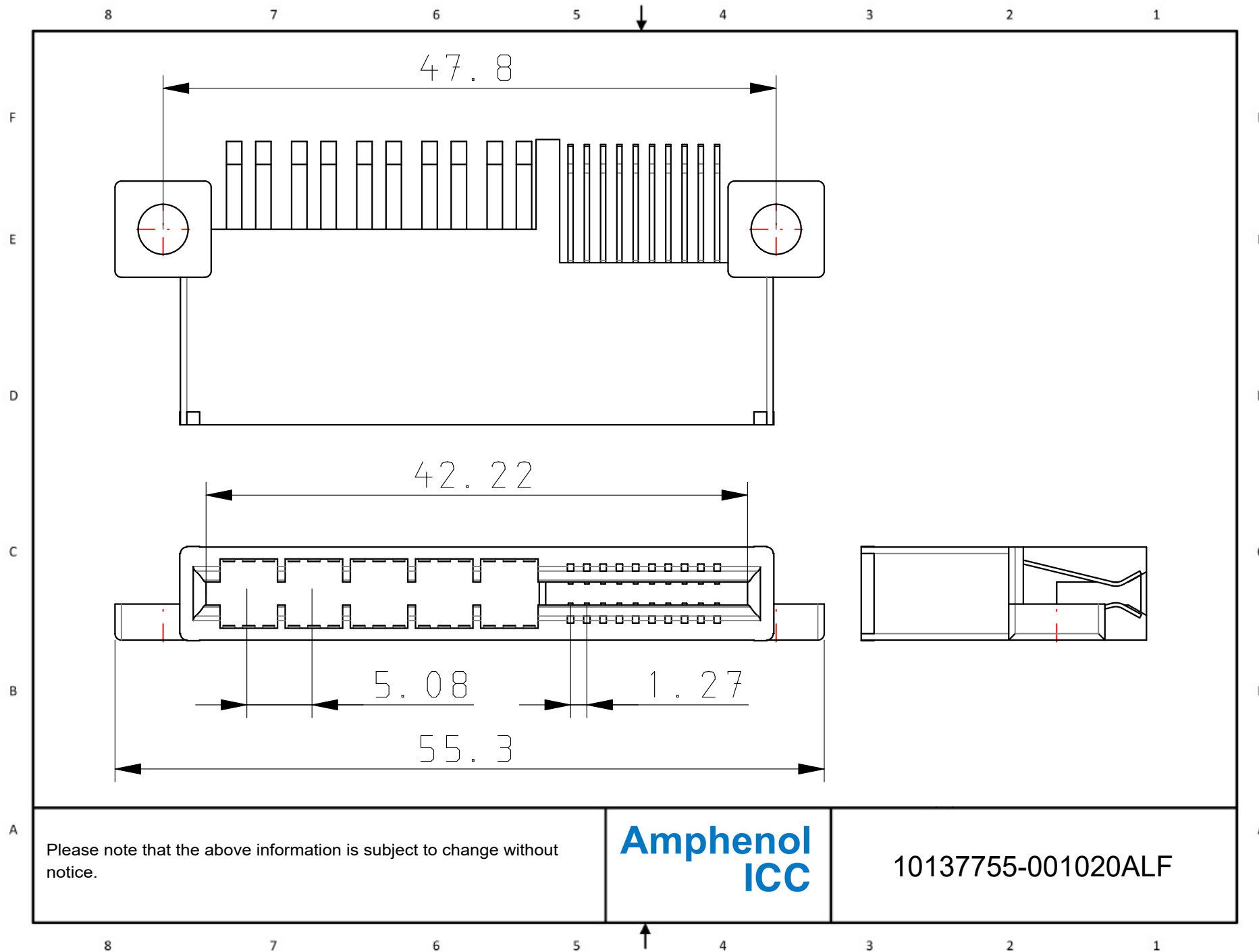


Industrial PCs  
Industrial Controls &  
Instruments



Medical

► eHPCE<sup>®</sup> Enhanced High Power Card Edge Connectors



Please note that the above information is subject to change without notice.

**Amphenol  
ICC**

10137755-001020ALF