

PART NUMBER	REV	FIRST USED	MACHINE REFERENCE	FEED TYPE
566403-1	A	356462-2	G-SPLICE TERM	AIR FEED
566403-2	C	2161300-1	5K CE & GI THRU SPLICE	AIR FEED
7-566403-7	A	356462-2	SPARE PARTS KIT	-
7-566403-8	C	-	CONV. KIT FOR -1 TO -2	-

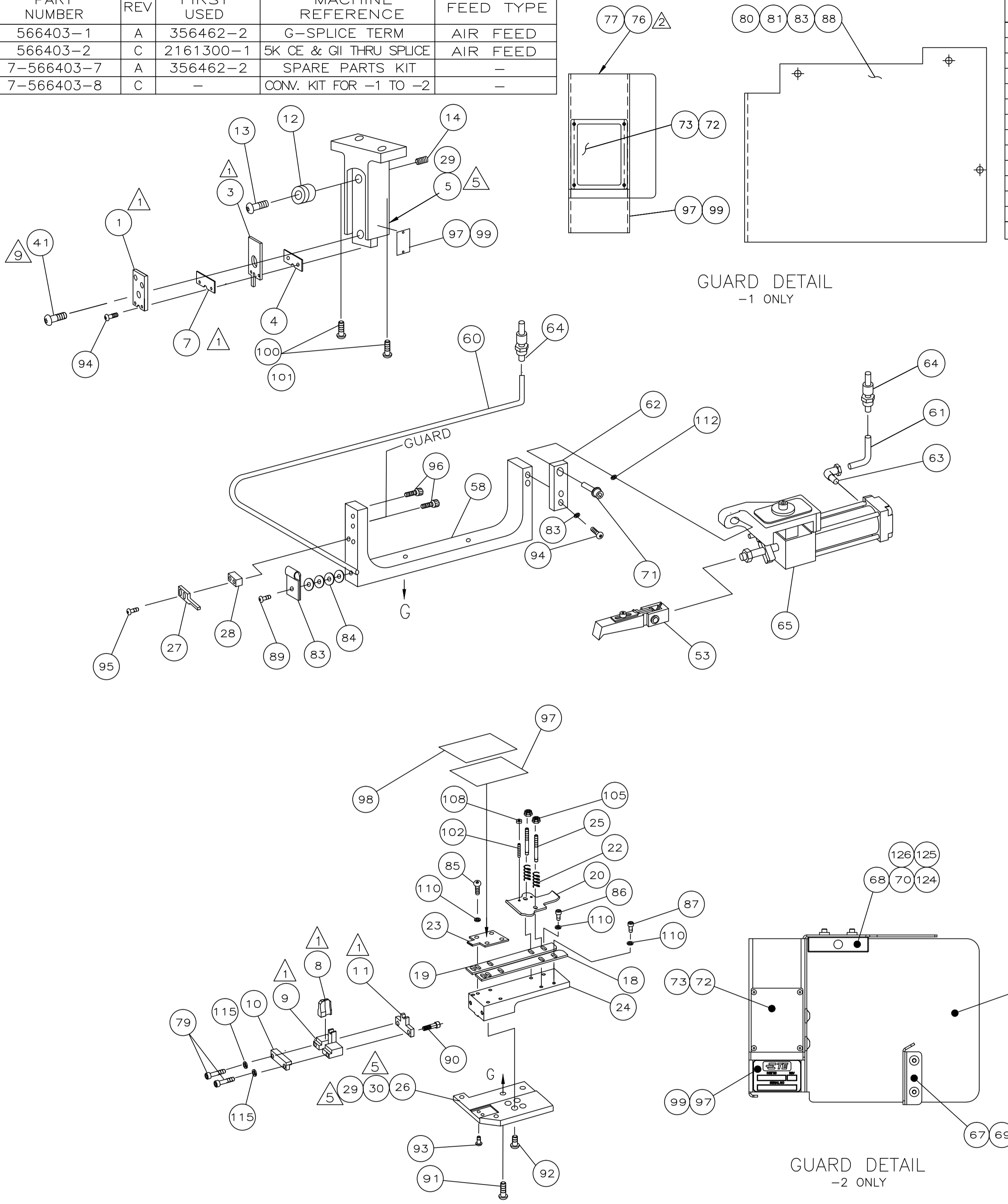
QTY	REQD	PER	ASSY	PART NO	DESCRIPTION	ITEM NO
-	-	-	-	-	REVISION OF EACH ASSY NO (WHEN BLANK, USE DWG REVISION)	-
-	-	-	-	-	REVISION OF EACH ASSY NO (WHEN BLANK, USE DWG REVISION)	-

CRIMPING DATA		
PAD LTR	CRIMP HEIGHT	WIRE SIZE
3	.089 ±.002 [2.26 ±.05mm]	6200-7000 CMA
3	.084 ±.002 [2.13 ±.05mm]	5200-6000 CMA
3	.079 ±.002 [2.00 ±.05mm]	4000-5000 CMA
2	.074 ±.002 [1.88 ±.05mm]	3000-3800 CMA
CRIMP SIZE	TYPE	RANGE
WIRE .140 [3.55mm]	F	3000-7000 CMA
INSUL	-	-
FEED .315	APPL INST 408-8318 (-1) 408-127000 (-2)	SET UP GAGE LAYOUT
WIRE STRIP LENGTH	-	-

QTY	REQD	PER	ASSY	PART NO	DESCRIPTION	ITEM NO
2	-	2	-	1-18023-3	SCR, SHC, M4X14	70
2	-	2	-	18024-6	SCR, BHC, M4X8	69
1	-	1	-	2168489-1	ACTUATOR, SPARE MCI	68
1	-	1	-	2161273-1	GUARD, END FEED INSERT	67
1	-	1	-	2161272-1	GUARD, END FEED	66
-	-	1	1	2-460277-2	AIR FEED ASSY	65
-	-	2	2	23238-1	QUICK DISCONNECT	64
-	-	1	1	980285-2	ELBOW, TUBING 1/8NPT - 1/4 TUBE	63
-	-	1	1	1338207-1	BRACKET, FEED, EXTENSION	62
-	-	12.00	12.00	IN	TUBING, POLY-FLO Ø.25	61
-	-	18.00	18.00	IN	TUBING, POLY-FLO Ø.25	60
-	-	-	-	-	-	59
-	-	1	1	1338208-1	BRACKET, FEED	58
-	-	-	-	-	-	57
-	-	-	-	-	-	56
-	-	-	-	-	-	55
-	-	-	-	-	-	54
-	-	-	-	-	-	53
-	-	-	-	-	-	52
-	-	-	-	-	-	51
-	-	-	-	-	-	50
-	-	-	-	-	-	49
-	-	-	-	-	-	48
-	-	-	-	-	-	47
-	-	-	-	-	-	46
-	-	-	-	-	-	45
-	-	-	-	-	-	44
-	-	-	-	-	-	43
-	-	-	-	-	-	42
-	-	1	1	7-21002-7	BOLT, CRIMPER(5/16-24x1.00)	41
-	-	-	-	-	-	40
-	-	-	-	-	-	39
-	-	-	-	-	-	38
-	-	-	-	-	-	37
-	-	-	-	-	-	36
-	-	-	-	-	-	35
-	-	-	-	-	-	34
-	-	-	-	-	-	33
-	-	-	-	-	-	32
-	-	-	-	-	-	31
-	-	2	2	18027-4	WASHER, FLAT M6	30
-	-	4	4	2-18023-9	SCR,SHC M6 X 20	29
-	-	1	1	3-690451-9	SPACER, STRIPPER	28
-	-	1	1	460276-1	STRIPPER	27
-	-	1	1	1424337-1	PLATE, BASE	26
-	-	2	2	22354-8	DRAG, STUD	25
-	-	1	1	462931-1	PLATE, STRIP GUIDE	24
-	-	1	1	462932-7	PLATE, STRIP HOLD DOWN	23
-	-	2	2	4-22281-1	SPRING, DRAG	22
-	-	-	-	-	-	21
-	-	1	1	462925-1	DRAG, STOCK	20
-	-	1	1	462929-1	GUIDE, STRIP (REAR)	19
-	-	1	1	462930-1	GUIDE, STRIP (FRONT)	18
-	-	-	-	-	-	17
-	-	-	-	-	-	16
-	-	-	-	-	-	15
-	-	1	1	27058-2	PLUNGER, SPRING, STUBBY	14
-	-	1	1	21004-9	SCR, SHLD .31 DIA X .50 LG.	13
-	-	1	1	1338124-1	WHEEL, ADJUSTING	12
-	-	1	1	459684-2	PLATE GUIDE, RETAINING	11
-	-	1	1	459580-1	PLATE RETAINING	10
-	-	1	1	459583-2	BODY, ANVIL	9
-	1	1	1	459582-6	ANVIL	8
-	-	1	1	459581-2	BLADE, SLUG	7
-	-	-	-	-	-	6
-	-	1	1	1338222-1	HOLDER, TOOL	5
-	-	1	1	1338221-1	PLATE, NUT	4
-	-	1	1	1338220-1	CRIMPER, GUIDE, MODIFIED	3
-	-	-	-	-	-	2
-	1	1	1	1338223-6	CRIMPER, WIRE, MODIFIED	1

QTY	REQD	PER	ASSY	PART NO	DESCRIPTION	ITEM NO
-	-	-	-	-	REVISION OF EACH ASSY NO (WHEN BLANK, USE DWG REVISION)	-
-	-	-	-	-	REVISION OF EACH ASSY NO (WHEN BLANK, USE DWG REVISION)	-
-	-	-	-	-	REVISION OF EACH ASSY NO (WHEN BLANK, USE DWG REVISION)	-
2	-	2	-	18029-2	M4 HEX NUT	126
2	-	2	-	18025-2	M4 LOCK WASHER	125
2	-	2	-	18027-2	M4 FLAT WASHER	124
1	-	1	-	408-32162	THRU SPLICE IS SHEET-GII	123
-	-	1	-	408-127000	THRU SPLICE IS SHEET	122
-	-	1	1	217238-1	GENERAL INSTRUCTION PACKAGE	121
-	-	-	1	408-8318	THRU SPLICE IS SHEET	120
-	-	-	-	-	-	119
-	-	-	-	-	-	118
-	-	-	-	-	-	117
-	-	-	-	-	-	116
-	-	2	2	21057-3	WASHER,LOCK(#6)RET PLATE	115
-	-	-	-	-	-	114
-	-	-	-	-	-	113
-	-	1	1	21024-8	LOCK WASHER 3/8	112
-	-	-	-	-	-	111
-	-	6	6	21024-4	WASHER,LOCK(NO.8)SHEAR BL	110
-	-	2	2	21024-5	LOCK WASHER #10	109
-	-	2	2	21018-4	NUT,HEX(4-40)DRAG	108
-	-	-	-	-	-	107
-	-	2	2	21022-2	NUT,HEX SL(8-32)DRAG STUD	105
-	-	-	-	-	-	104
-	-	-	-	-	-	103
-	-	2	2	4-21078-8	SKT SKT SET (4-40x.75)DRAG	102
2	-	2	-	3-18023-3	SCR, SHC (M6x50)	101
-	-	2	-	3-18023-1	SCR, SHC (M6x30)	100
-	-	1	1	690701-2	PLATE, IDENTIFICATION	99
-	-	1	1	819347-1	PLATE, IDENTIFICATION	98
-	-	3	3	25527-3	TAPE, POLYURETHANE FOAM	97
-	-	2	2	2-21002-5	SCR,BHC(10-32X.25)GUARD	96
-	-	2	2	2-21000-9	SCR,SHC(8-32X.75)STRIPPER	95
-	-	2	2	3-21000-5	SCR, SHC (10-32X.50) EXT. FEED	94
-	-	2	2	2-22733-0	SCR,SHC(10-32X.38)ANVIL	93
-	-	4	4	3-21002-4	SCR,BHC(1/4-20x.62)ST GD PL	92
-	-	2	2	2-22733-8	SCR, BHC(1/4-20x.62) FEED BRKT	91
-	-	2	2	1-21002-6	SCR,BHC(6-32X.25)PLATE GUIDE	90
-	-	1	1	1-21002-8	SCR, BHC 6-32 X .50 LG.	89
-	-	-	3	21018-7	NUT, HEX (10-32) GUARD	88
-	-	1	1	2-21000-9	SCR,SHC(8-32X.75)STRIP GUIDE	87
-	-	1	1	2-21000-6	SCR,SHC(8-32x.38)STRIP GUIDE	86
-	-	4	4	2-21002-2	SCR,BHC(8-32X.50)STRIP GUIDE	85
-	-	4	4	21899-1	WASHER, FLAT #6	84
-	-	-	5	21025-5	WASHER, LOCK (NO. 10) GUARD	83
-	-	-	-	-	-	82
-	-	-	1	1424336-1	GUARD,APPLICATOR FEED	81
-	-	-	3	1-21100-9	SCR,BHC10-24UNCX.50LG.	80
-	-	2	2	1-21000-9	SCR,SHC(6-32X.38)SH PL	79
-	-	-	-	-	-	78
-	-	-	2	2-21002-5	SCR, BHC (10-32X.25) GUARD	77
-	-	-	1	1338320-1	GUARD, END FEED	76
-	-	-	-	-	-	75
-	-	4	4	1-21000-0	SCR, SHC (2-56X.25) GUARD WINDOW	73
-	-	1	1	1338174-1	WINDOW, GUARD	72
-	-	1	1	3-21001-3	SCR, SHC (3/8-16X.75) FEED ASSY	71
-	-	-	-	-	-	70
-78	-77	-2	-1	U/M	PART NO DESCRIPTION ITEM NO	

QTY	REQD	PER	ASSY	PART NO	DESCRIPTION	ITEM NO
-	-	-	-	-	REVISION OF EACH ASSY NO (WHEN BLANK, USE DWG REVISION)	-
-	-	-	-	-	REVISION OF EACH ASSY NO (WHEN BLANK, USE DWG REVISION)	-



GUARD DETAIL -1 ONLY

GUARD DETAIL -2 ONLY

- 1 RECOMMENDED SPARE PARTS.
- 2 GUARD MUST BE IN PLACE WHEN OPERATING APPLICATOR IN A BENCH MACHINE.
- 3 SEE DRAWING FOR COMPONENTS
- 4 RECOMMENDED SET UP WIRE FOR TERMINAL 62001. FOR APPLICATOR QUALIFICATION ONLY.
- 5 ITEM NOT SHOWN.
- 6 USE MANUAL PRECISION ADJUSTMENT LEVER ON G TERMINATOR TO ACHIEVE PROPER CRIMP HEIGHT.
- 7 SOLID WIRE ON BOTTOM
- 8 ITEM 81 IS ATTACHED TO THE G TERMINATOR GUARD DOOR WITH ITEM 80, 83, 88.

CRIMPER BOLT MUST BE LOOSENED TO CHANGE CRIMP HEIGHT ADJUSTING WHEEL. BE SURE TO SEAT THE CRIMPER AGAINST THE ADJUSTING WHEEL AND REALIGN THE TOOLING.

REF	CRIMP HEIGHT	MAG WIRE
3	.089	(2) 15
2	.074	(2) 18

THIS DRAWING IS A CONTROLLED DOCUMENT.

THIS DRAWING IS UNPUBLISHED. BY AMP INCORPORATED. ALL RIGHTS RESERVED.

LOC A
DIST 66