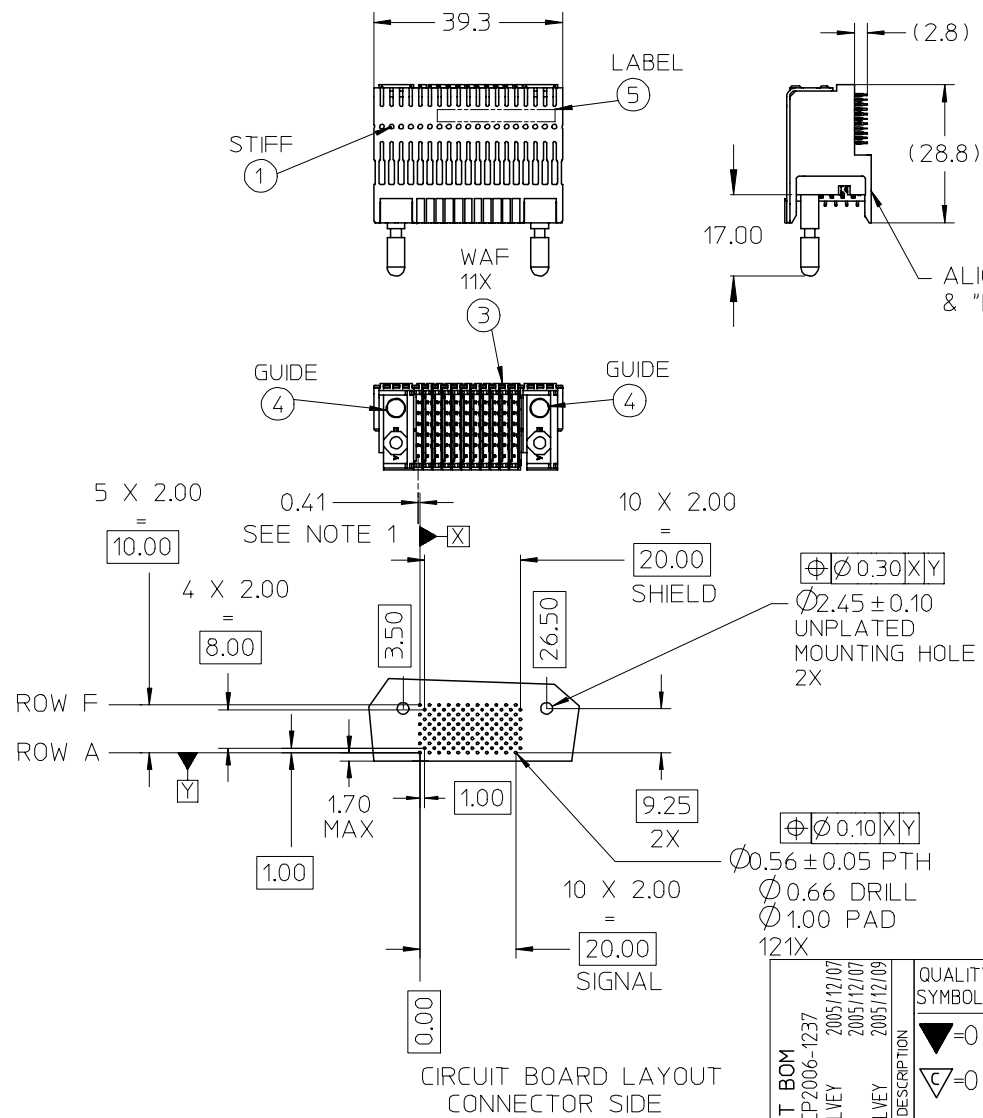


ITEM	PART NUMBER	QTY	DESCRIPTION
1	74601-0039	1	STIFFENER
2	73726-0000	2	MOUNTING SCREW
3	74602-5030	11	6.25mm SIGNAL WAFER, LF
4	74604-1600	2	GUIDE MODULE, UNPOLARIZED
5	73728-0000	1	CUSTOM LABEL

- NOTES:
- DISTANCE FROM CENTER CONTACT TO CENTER OF PLATED THRU HOLE.
 - SCREWS PACKED IN BAG WITH TUBE.
 - STIFFENER MARKED WITH MOLEX PART NUMBER AND DATE CODE.
 - PARTS PACKAGED PER PK-70873-0892.
 - THIS PART CONFORMS TO MOLEX PRODUCT SPECIFICATION PS-74031-999.



LEADFREE PLATING
ON SIGNALS AND
SHIELDS

CUSTOMER: IBM

CORRECT BOM EC NO: UCP2006-1237 DRWN: KMULVEY 2005/12/07 CHKD: 2005/12/07 APPR: KMULVEY 2005/12/09	QUALITY SYMBOLS ▽=0 ▽=0	GENERAL TOLERANCES (UNLESS SPECIFIED)		DIMENSION STYLE MM ONLY		SCALE 1:1	DESIGN UNITS METRIC	THIRD ANGLE PROJECTION	
		mm	INCH	DRAWN BY KMULVEY	DATE 2005/12/01	TITLE VHDM 6 ROW RIGHT ANGLE MALE SALES ASSEMBLY			
REV A1	DESCRIPTION	4 PLACES	± ---	± ---	CHECKED BY JBINGHAM	DATE 2005/12/01	APPROVED BY SREED		
		3 PLACES	± ---	± ---	DATE 2005/12/01	MATERIAL NO. 74600-9975			
DRAFT WHERE APPLICABLE MUST REMAIN WITHIN DIMENSIONS		2 PLACES	± 0.13	± ---	DATE 2005/12/01		DOCUMENT NO. SD-74600-9975		
		1 PLACE	± 0.25	± ---	DATE 2005/12/01		SHEET NO. 1 OF 1		
		ANGULAR ±1/2°		THIS DRAWING CONTAINS INFORMATION THAT IS PROPRIETARY TO MOLEX INCORPORATED AND SHOULD NOT BE USED WITHOUT WRITTEN PERMISSION					