

Customer Part:

Description

- 1.6 x 1.2mm crystal oscillator in a ceramic package with a seam sealed metal lid, hermetically sealed.
- Model IQXO-984
- Model Issue number 1

Frequency Parameters

- Frequency 32.7680kHz
- Frequency Stability $\pm 30.00\text{ppm}$
- Operating Temperature Range -20.00 to 70.00°C
- Frequency Stability: Includes Frequency Tolerance @ 25°C , operating temperature range, supply voltage variation and load variation.

Electrical Parameters

- Supply Voltage $3.3\text{V} \pm 10\%$
- Current Draw (typical) 0.025mA

Output Details

- Output Compatibility CMOS
- Drive Capability 15pF max
- Rise and Fall Time 200.0ns max
- Duty Cycle 45/55
- Output Voltage Levels:
Output Low (VoL): $10\%V_s$ max
Output High (VoH): $90\%V_s$ min
- Start Up Time: 7ms max

Output Control

- Stand-by Mode:
Logic '0' ($30\%V_s$ max) to pad 1 disables the oscillator output, the output goes to a high impedance state.
Logic '1' ($70\%V_s$ min) or no connection to pad 1 enables oscillator output.
- Stand-by Current: $1.4\mu\text{A}$ typical $3\mu\text{A}$ max

Environmental Parameters

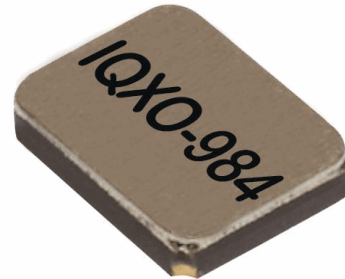
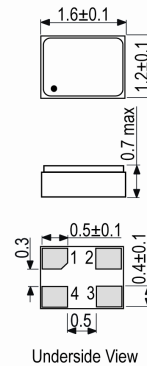
- Storage Temperature Range: -40 to 85°C

Compliance

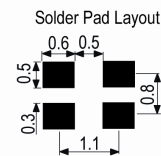
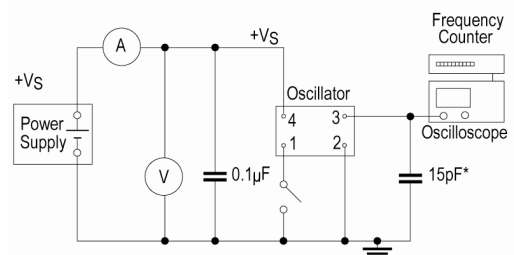
- RoHS Status (2015/863/EU) Compliant
- REACH Status Compliant
- MSL Rating (JDEC-STD-033): Not Applicable

Packaging Details

- Pack Style: Reel Tape & reel in accordance with EIA-481-D
Pack Size: 3,000
- *Alternative packing option available*


Outline (mm)


- Pad Connections
1. Standby Operation
 2. GND
 3. Output
 4. +Vs


Test Circuit


* Inclusive of jiggging and equipment capacitance

Sales Office Contact Details:

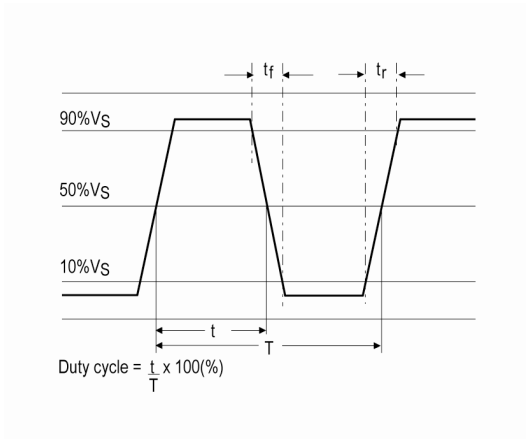
UK: +44 (0)1460 270200
Germany: 0800 1808 443

France: 0800 901 383
USA: +1.760.318.2824

Email: info@iqdfrequencyproducts.com
Web: www.iqdfrequencyproducts.com

Customer Part:

Wave Form



Sales Office Contact Details:

UK: +44 (0)1460 270200
Germany: 0800 1808 443

France: 0800 901 383
USA: +1.760.318.2824

Email: info@iqdfrequencyproducts.com
Web: www.iqdfrequencyproducts.com