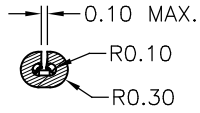
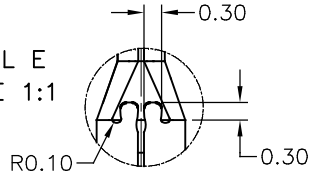


DETAIL D
SCALE 2:1



DETAIL E
SCALE 1:1



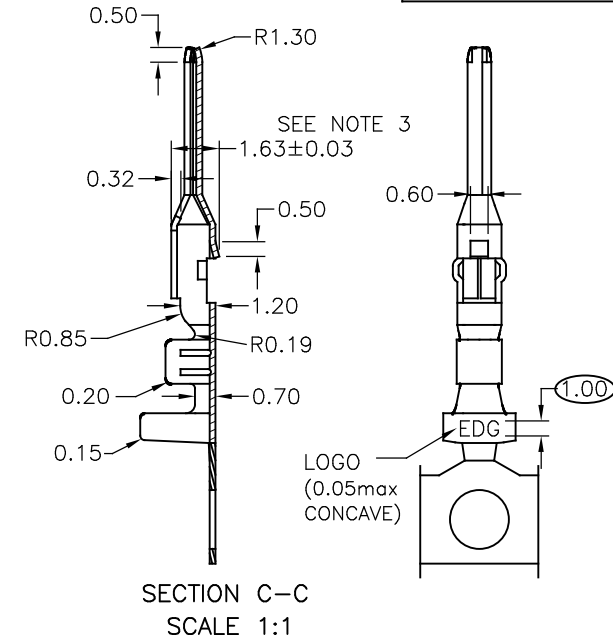
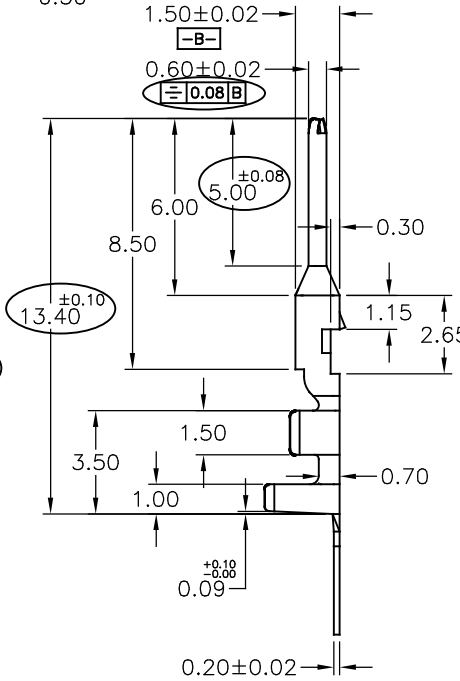
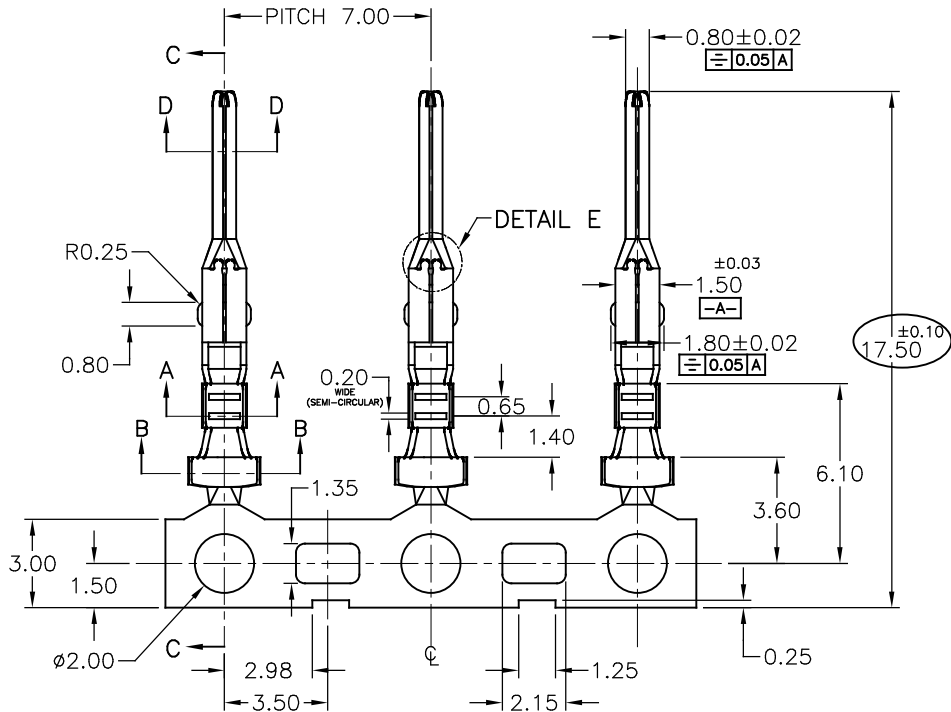
THIS IS A C.A.D. GENERATED DRAWING
DO NOT MAKE MANUAL REVISIONS TO MASTER.



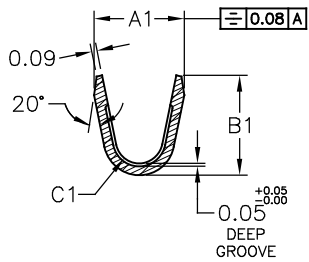
* UNLESS OTHERWISE SPECIFIED TOLERANCES
ON DECIMAL IS:

UNIT: MM			
DIM	TOL	DIM	TOL
X.	±0.15	X.	±2.0°
X.X	±0.10	X.X°	±1.0°
X.XX	±0.05	X.XX°	±0.5°
X.XXX	±0.03	X.XXX°	±0.3°

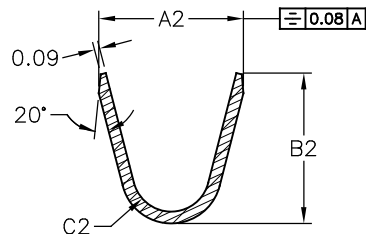
ISSUE NUMBER	
ORIGINAL	①
DIM 17.50±0.10 WAS	②
17.50±0.05, \equiv 0.08 [A] WAS	③
\equiv 0.05 [B], 13.40±0.10 WAS	④
13.40±0.05, 5.00±0.08	⑤
AW5 5.00±0.05, 1.00 WAS	⑥
0.50	⑦
Peter Deng JAN.18/16	
DIM 1.63 WAS 1.70	⑧
ADD NO TEAR ON NOTE 3	
R.STA.MONICA NOV.22/16	



565-290-731	1.9±0.10	1.9±0.10	R0.55±0.05	3.0±0.10	2.7±0.10	R0.90±0.05	AWG #20-22	∅1.70 max	8,000 X 5 R
565-290-711	1.7±0.10	1.7±0.10	R0.50±0.05	2.6±0.10	2.4±0.10	R0.83±0.05	AWG #22-28	∅1.60 max	8,000 X 5 R
PART NO.	A1	B1	C1	A2	B2	C2	WIRE RANGE	INSULATION DIA	PCS/REEL



SECTION A-A
SCALE 2:1



SECTION B-B
SCALE 2:1

NOTES:

1. MATERIAL: PHOSPHOR BRONZE C5191-1/2 H, 0.2mm THICK, PRE-PLATING TIN 50-100u" ALL OVER NICKEL 5-15u".
2. PART SHALL BE FREE OF BURRS NOT EXCEEDING 0.02mm. NO CRACKS ALLOW ON ANY SURFACES.
3. TOOLING TO BE DESIGNED WITH ADJUSTMENT TO HOLD THIS DIMENSION. NO TEAR IN THIS AREA
4. THE MALE TERMINAL WAS STAMPED FROM PLATING STRIP.

565 SERIES MALE CONTACT



EDAC INC
TORONTO, ONTARIO
CANADA

YOUR CONNECTION TO QUALITY & SERVICE

THESE DRAWINGS AND SPECIFICATIONS
ARE THE PROPERTY OF EDAC INC. AND
SHALL NOT BE REPRODUCED, OR COPIED
OR USED AS THE BASIS FOR THE
MANUFACTURE OR SALE OF APPARATUS
WITHOUT WRITTEN PERMISSION.

ACAD REFERENCE NO. 565-290-711 & 731

DRAWN: Peter Deng DATE: MAY.16/15

CHECKED: DATE:

SCALE: (IN C.A.D. 1:1) SHEET 1 OF 1

DRAWING NUMBER 565-290-711 & 731 ISSUE 7