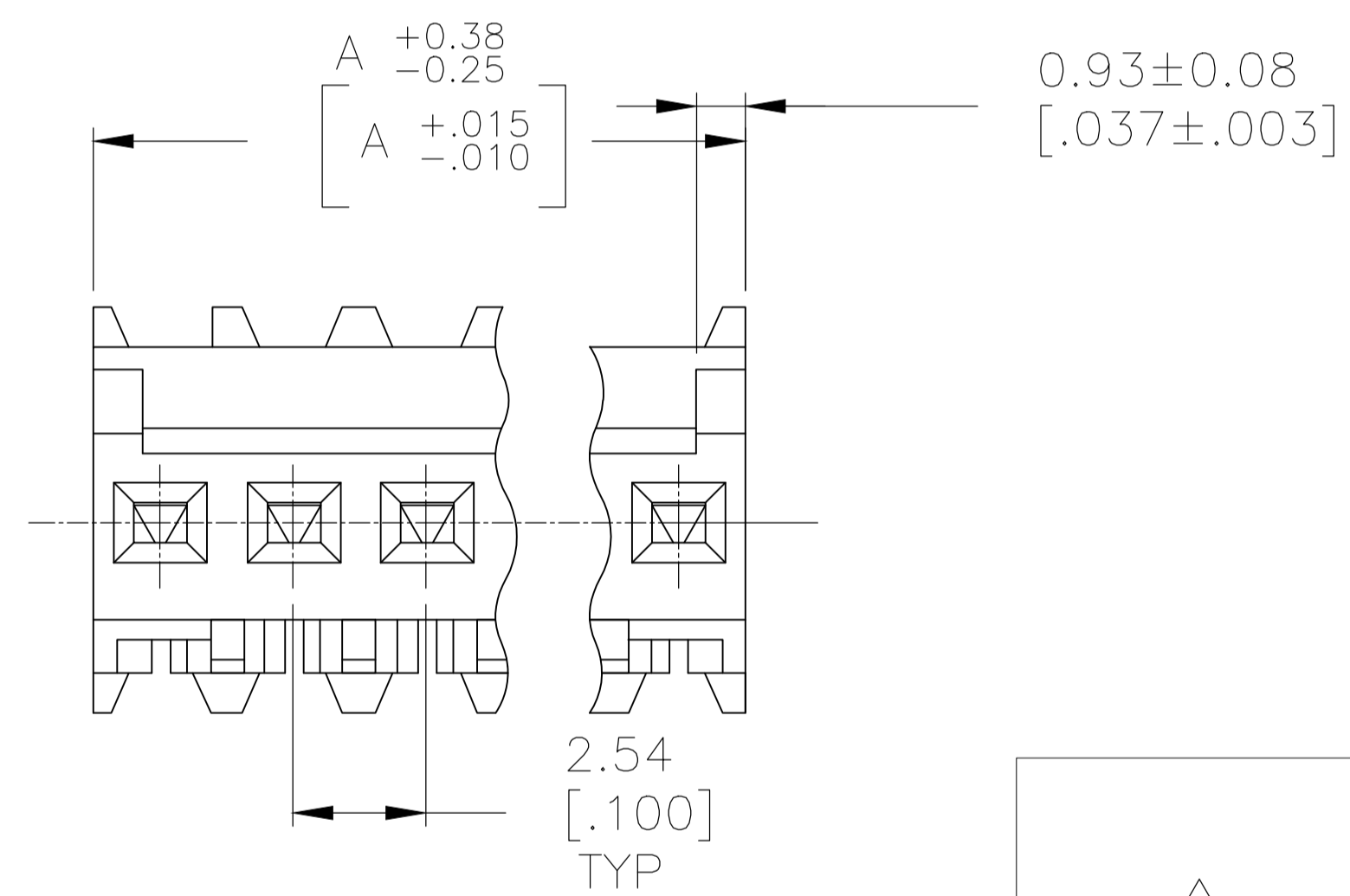
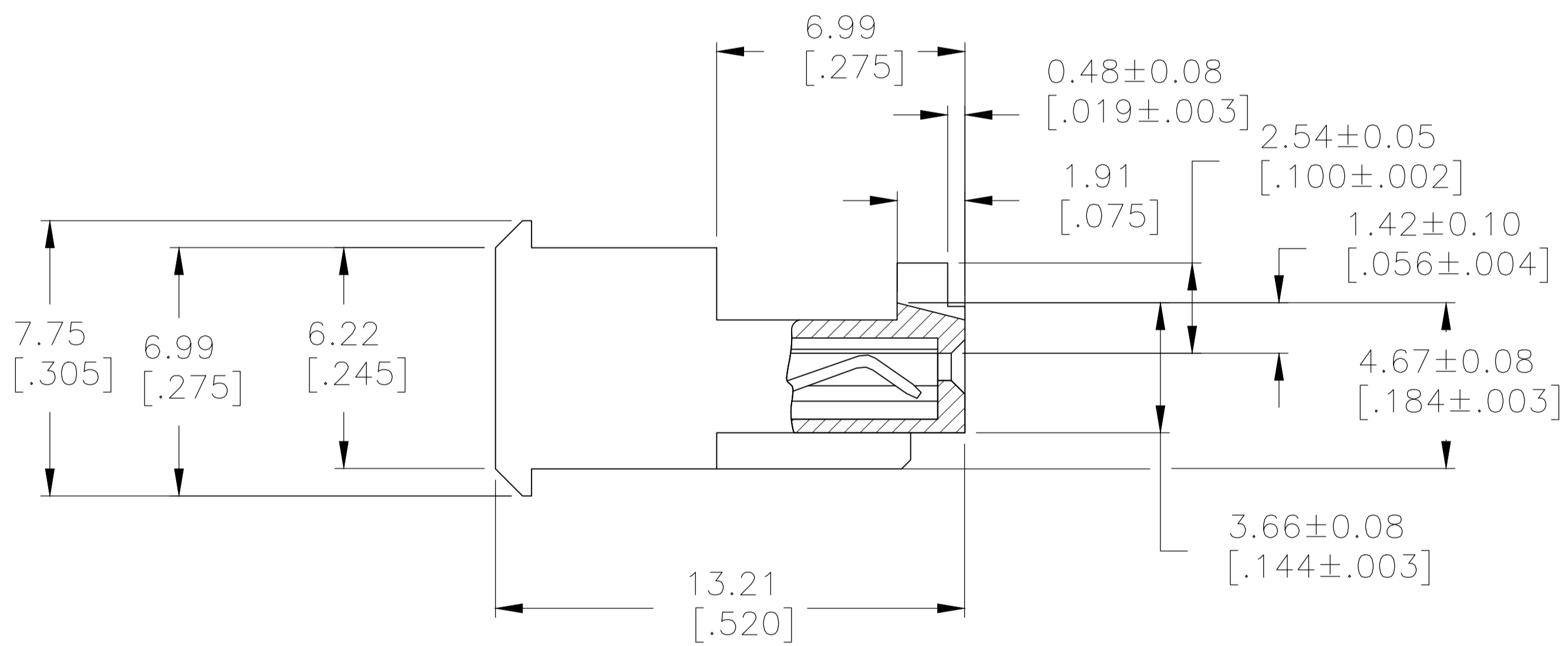


- △ MATERIAL: CONNECTOR-NYLON UL94V-2 (BLUE).
 CONTACTS-0.30 [.012] THICK COPPER ALLOY
 0.00076 [.000030] GOLD OR 0.00076 [.000030]
 TOTAL GOLD FLASH OVER PALLADIUM NICKEL,
 PER TE CONNECTIVITY'S DISCRETION, IN CONTACT
 AREA WITH BRIGHT TIN-LEAD FOR 644726-2 THRU
 1-644726-5, MATTE WHISKER MITIGATED TIN
 FOR 3-644726-2 THRU 4-644726-5 OVER
 NICKEL UNDERPLATE.
- 2 CONTACTS ACCEPT 26 AWG WIRE WITH 1.52 [.060] MAX INSULATION DIAMETER.
- 3 CONTACTS MUST ACCEPT 0.64±0.03 [.025±.001] SQUARE POST AND REMAIN LOCKED IN POSITION.
- △ IDENTIFICATION NUMBER FOR LAST CIRCUIT MAY NOT APPEAR ON ALL ASSEMBLIES.
- 5 DIMENSIONS IN BRACKETS ARE IN INCHES.
- 6 HOUSING FEATURES ARE: FEED THRU WITH LOCKING RAMP AND POLARIZING TAB.
- △ OBSOLETE PARTS: OBSOLETE CIS STREAMLINING PER D.RENAUD/D.SINISI



LEAD FREE	38.10 [1.500]	15	4-644726-5
	35.56 [1.400]	14	4-644726-4
	33.02 [1.300]	13	4-644726-3
	30.48 [1.200]	12	4-644726-2
	27.94 [1.100]	11	4-644726-1
	25.40 [1.000]	10	4-644726-0
	22.86 [.900]	9	3-644726-9
	20.32 [.800]	8	3-644726-8
	17.78 [.700]	7	3-644726-7
	15.24 [.600]	6	3-644726-6
	12.70 [.500]	5	3-644726-5
	10.16 [.400]	4	3-644726-4
	7.62 [.300]	3	3-644726-3
	5.08 [.200]	2	3-644726-2
	DIM A	NO.OF POSN	ASSEMBLY
CONTAINS LEAD	38.10 [1.500]	15	1-644726-5
	35.56 [1.400]	14	1-644726-4
	33.02 [1.300]	13	1-644726-3
	30.48 [1.200]	12	1-644726-2
	27.94 [1.100]	11	1-644726-1
	25.40 [1.000]	10	1-644726-0
	22.86 [.900]	9	644726-9
	20.32 [.800]	8	644726-8
	17.78 [.700]	7	644726-7
	15.24 [.600]	6	644726-6
	12.70 [.500]	5	644726-5
	10.16 [.400]	4	644726-4
	7.62 [.300]	3	644726-3
	5.08 [.200]	2	644726-2
	DIM A	NO.OF POSN	ASSEMBLY

△ 7 SUPERCEDED

△ 7 SUPERCEDED

THIS DRAWING IS A CONTROLLED DOCUMENT. DIN S. HOOVER 28DEC04
 CHK: D. ROSSI 28DEC04
 APVD: D. ROSSI 28DEC04

TE Connectivity

MTA .100 CONNECTOR ASSEMBLY, 26 AWG, STANDARD

108-1050

114-1019

00779 644726

SCALE 8:1 SHEET 1 OF 1 REV H