

Light is OSRAM

03.09.2018

# OS-IN-2018-010

## Change of via position to ensure H<sub>2</sub>S stability

**Objective** Change of via position to ensure H<sub>2</sub>S stability

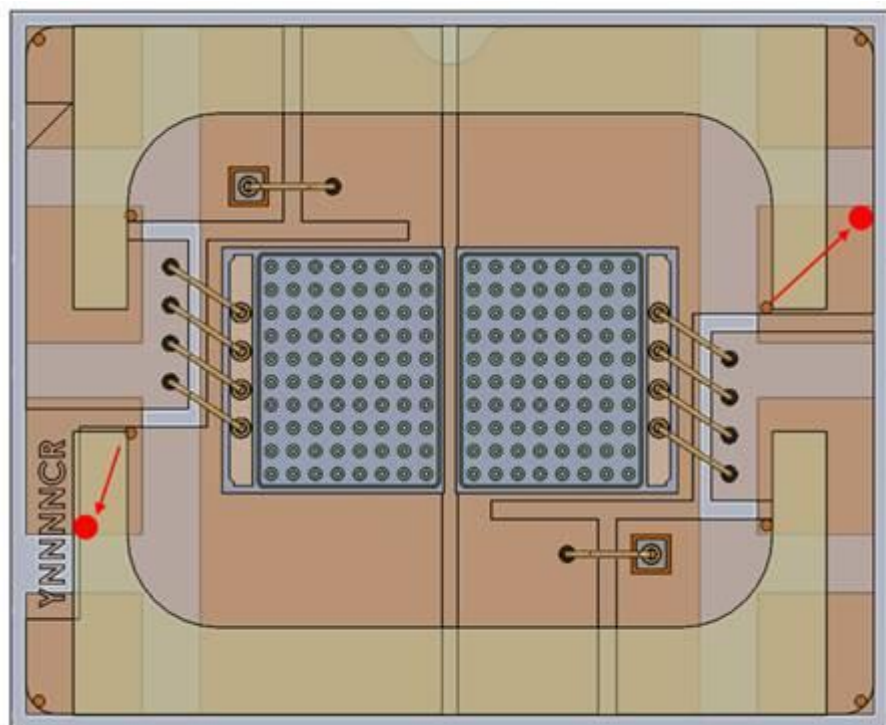
**Products affected** LE A Q7WP, LE B Q7WP, LE CG Q7WP

**Background** Due to automotive qualification requirements the ceramic substrate design of the device needs to be optimized to ensure the H<sub>2</sub>S stability with respect to electrical short

Modification of ceramic substrate design (via hole position)

Current / new status of via hole position  
(no change of via hole diameter)

**Realization**



---

<b>Time Schedule</b>	Roll out planned for August 2018 onwards
<b>Assessment</b>	No changes in product data sheet No change of external dimensions and associated tolerances of the product

---

**Please direct your inquiry to your local Sales office.**

OSRAM Opto Semiconductors  
GmbH

Head Office:

Leibnizstrasse 4  
93055 Regensburg, Germany  
Phone +49 941 850-5  
Fax +49 941 850-1002  
[www.osram-os.com](http://www.osram-os.com)

## *Products Affected by Information Notification*

**Number:** OS-IN-2018-010

**Name:** Change of via position to ensure H2S stability

**Release Date:** 9/3/2018

**Implementation Date:** 9/12/2018

<i>Product</i>	<i>QNumber</i>	<i>QNumber Description</i>	<i>Part Number</i>
LE A Q7WP	Q65111A4457	LE A Q7WP-MZMZ-1-0-A40-R18-Z	LE A Q7WP-MZMZ-1
	Q65111A5467	LE A Q7WP-NYNZ-1-0-A40-R18-Z	LE A Q7WP-NYNZ-1
	Q65111A7611	LE A Q7WP-NXNZ-2-0-A40-R18-Z-LM	LE A Q7WP-NXNZ-2-LM
	Q65111A8289	LE A Q7WP-NXPX-23-0-A40-R18-Z	LE A Q7WP-NXPX-23
	Q65111A9334	LE A Q7WP-NYPX-23-0-A40-R18-Z-XX	LE A Q7WP-NYPX-23-XX
	Q65112A1299	LE A Q7WP-NXNZ-23-0-A40-R18-XX	LE A Q7WP-NXNZ-23-XX
LE B Q7WP	Q65111A4459	LE B Q7WP-8B7C-W4-0-A40-R18-Z	LE B Q7WP-8B7C-W4
	Q65111A5465	LE B Q7WP-5C6C-W3-0-A40-R18-Z	LE B Q7WP-5C6C-W3
	Q65111A6253	LE B Q7WP-6C7C-W4-0-A40-R18-Z	LE B Q7WP-6C7C-W4-Z
	Q65111A7539	LE B Q7WP-8B7C-4-0-A40-R18-Z-LM	LE B Q7WP-8B7C-4-Z-LM
	Q65111A8287	LE B Q7WP-5C8C-24-0-A40-R18-Z	LE B Q7WP-5C8C-24
	Q65111A9333	LE B Q7WP-6C8C-23-0-A40-R18-Z-XX	LE B Q7WP-6C8C-23-XX
	Q65112A0438	LE B Q7WP-6C7C-23-0-A40-R18-Z	LE B Q7WP-6C7C-23
LE CG Q7WP	Q65111A4461	LE CG Q7WP-6Q5R-1-0-A40-R18-Z	LE CG Q7WP-6Q5R-1
	Q65111A5315	LE CG Q7WP-8Q5R-1-0-A40-R18-Z	LE CG Q7WP-8Q5R-1
	Q65111A7534	LE CG Q7WP-8Q5R-1-0-A40-R18-Z-LM	LE CG Q7WP-8Q5R-1-LM
	Q65111A8285	LE CG Q7WP-7Q6R-1-0-A40-R18-Z	LE CG Q7WP-7Q6R-1
	Q65111A9332	LE CG Q7WP-8Q6R-1-0-A40-R18-Z-XX	LE CG Q7WP-8Q6R-1