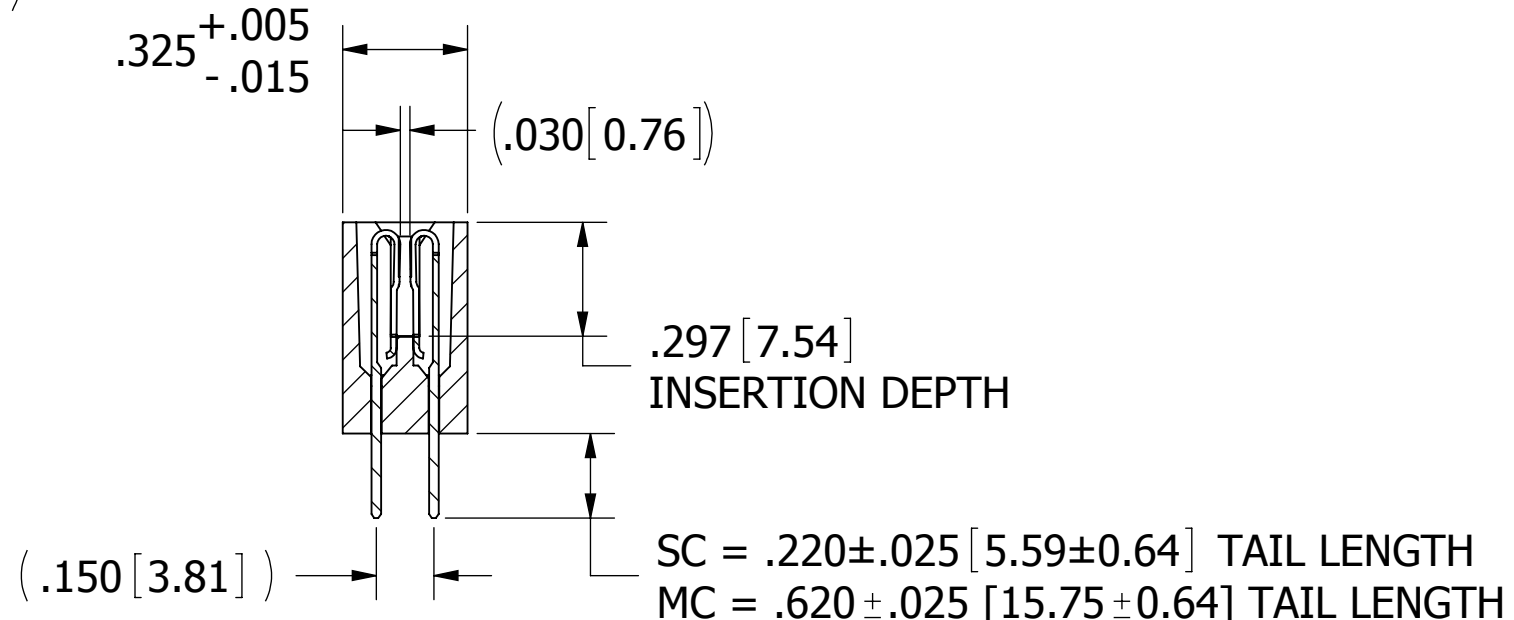
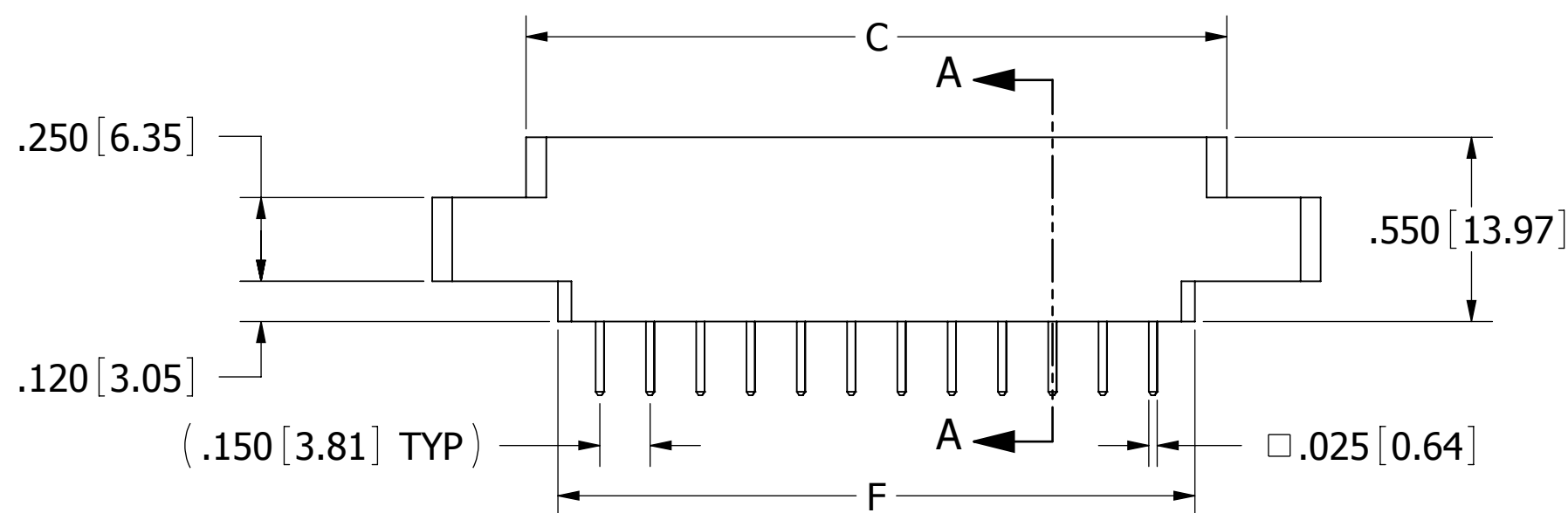
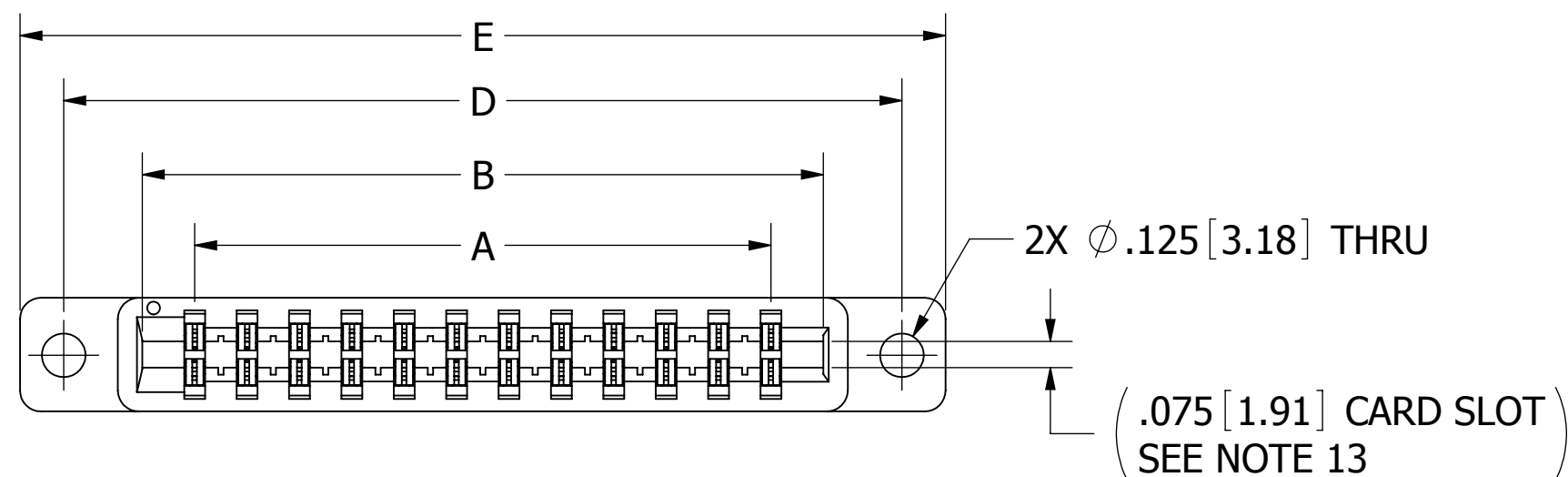
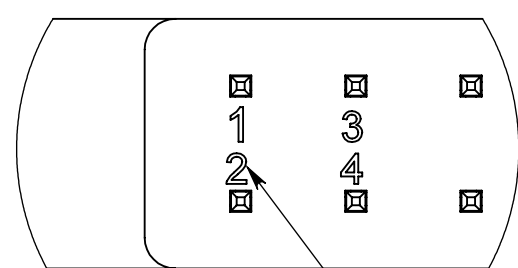


| REVISIONS |         |  |            |    |
|-----------|---------|--|------------|----|
| REV.      | ECO. NO | DESCRIPTION  | DATE       | BY |
| A         | 2351    | INITIAL RELEASE  | 06/01/2011 | SE |
| B         | 2612    | ADD 25 POSITION & 'B' MOUNTING OPTION, UPDATE INSULATOR WIDTH TOLERANCE & DWG FORMAT | 6/11/2012  | JH |

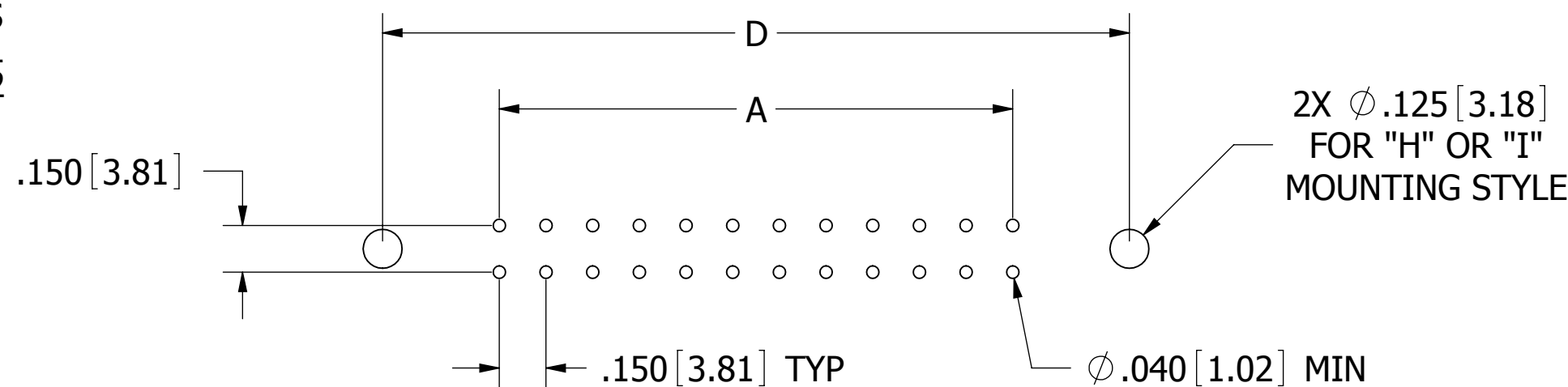


SECTION A-A

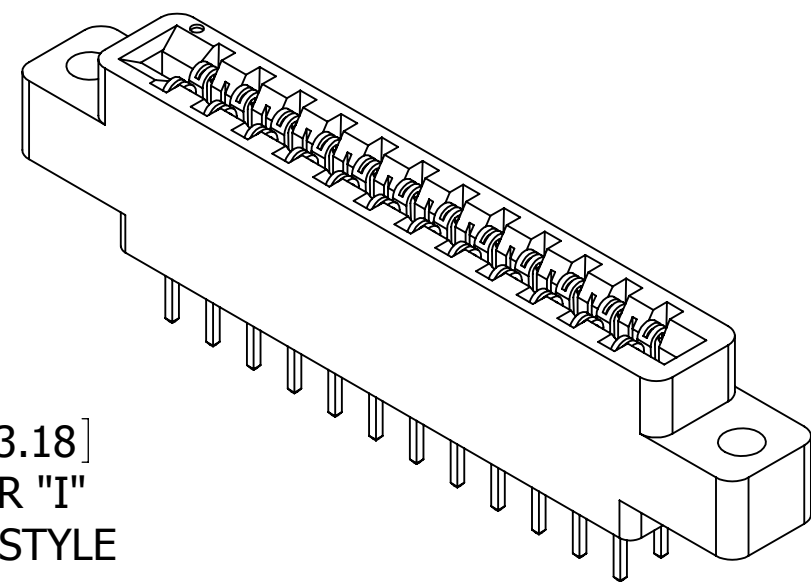
--- J --- DMCH  
 --- J --- DSCH



CONTACT MARKINGS  
 1 3 5... 47 49 51  
 2 4 6... 48 50 52



RECOMMENDED PCB LAYOUT



- NOTES:
- INSULATOR MATERIAL: SEE PART NUMBER CODING
  - CONTACT MATERIAL: SEE PART NUMBER CODING
  - PLATING: SEE PART NUMBER CODING
  - OPERATING TEMPERATURE: SEE PART NUMBER CODING
  - PROCESSING TEMP: SEE PART NUMBER CODING
  - UL FLAMMABILITY RATING: 94V-0
  - OPERATING VOLTAGE: 850 VAC MINIMUM AT SEA LEVEL
  - CURRENT RATING: 3 AMP PER CONTACT
  - CONTACT RESISTANCE: 30 MILLI OHMS MAX
  - INSULATION RESISTANCE: 5000 MEGA OHMS
  - DURABILITY: 500 CYCLES MIN
  - CONNECTOR IDENTIFICATION: THE PART SHALL BE MARKED WITH A PART NUMBER AND LOT CODE
  - BOARD THICKNESS ACCOMMODATED:  $.062 \pm .008$  [1.57  $\pm$  0.20]
  - INSERTION FORCE: 16 OZ MAX PER CONTACT PAIR WHEN USING A  $.062$  [1.57] TEST BLADE  
INTERNAL INSPECTION TO BE PER SULLIN'S WORK INSTRUCTION WI7.3-01
  - WITHDRAWAL FORCE: 1 OZ MIN PER CONTACT PAIR USING  $.062$  [1.57] PCB

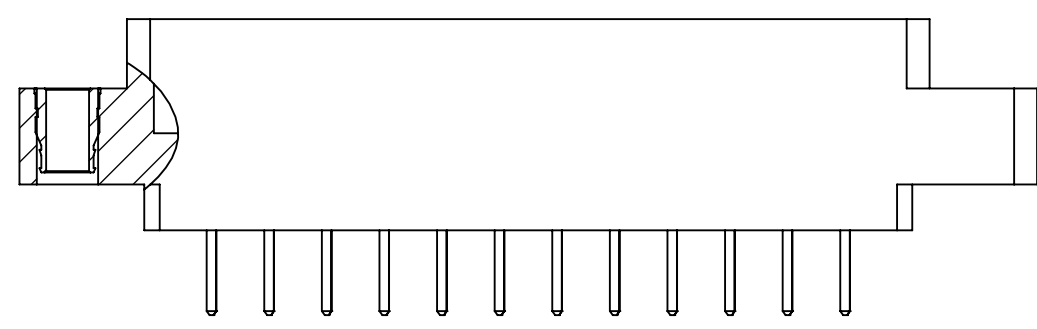
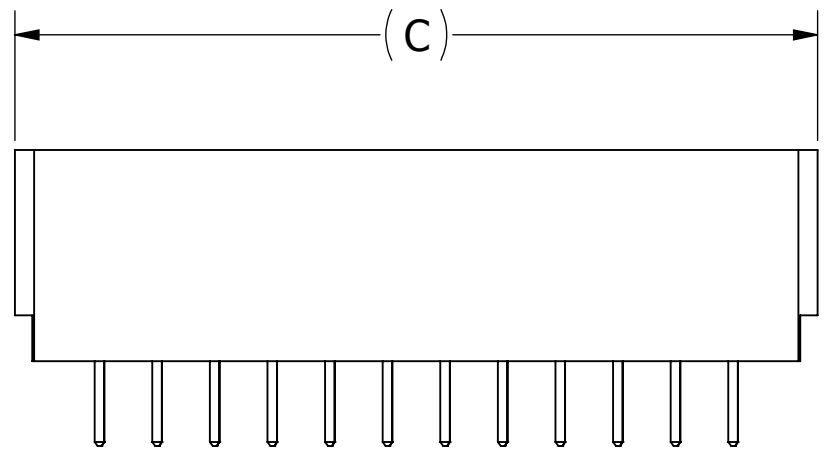
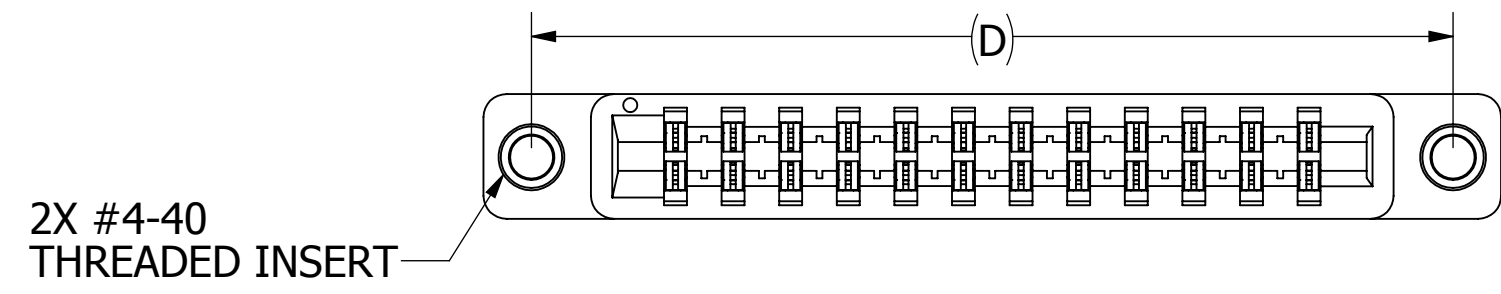
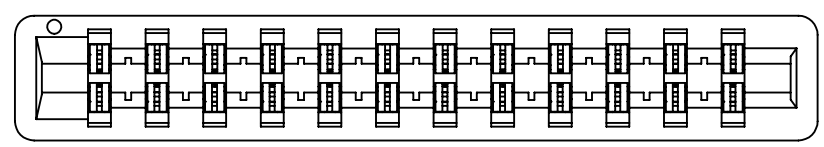


# CUSTOMER COPY

|   |  |           |                    |                    |   |  |
|---|--|-----------|--------------------|--------------------|---|--|
| UNLESS OTHERWISE SPECIFIED: DIMENSIONS ARE IN INCHES [MM]                                 |  | DRAWN     | DATE               | NAME               |   |  |
|   |  |           | 5/31/2011          | SE                 |   |  |
| TOLERANCES:   |  |           |                    |                    | <small>THE INFORMATION HEREIN CONTAINS PROPRIETARY INFORMATION OF SULLINS ELECTRONICS AND IS NOT TO BE REPRODUCED, USED OR DISCLOSED TO OTHERS FOR ANY PURPOSE EXCEPT AS SPECIFICALLY AUTHORIZED IN WRITING BY AN OFFICER OF SULLINS ELECTRONICS.</small> |  |
| ANGULAR: $\pm 1^\circ$  |  |           |                    |                    | TITLE<br>EDGE CARD, .150" PITCH, HP   |  |
| DECIMALS<br>.XX = $\pm .02$ [.5]<br>.XXX = $\pm .005$ [.13]<br>.XXXX = $\pm .0005$ [.013] |  |           |                    |                    | PART NUMBER<br>_ _ J _ _ DSC (DMC) _  |  |
| SCALE: 2:1  |  | SIZE<br>C | CAGE CODE<br>54453 | DWG. NO.<br>C11696 | REV<br>B  |  |
|   |  |           |                    | SHEET 1 OF 3       |   |  |

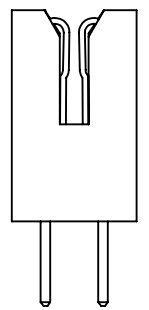
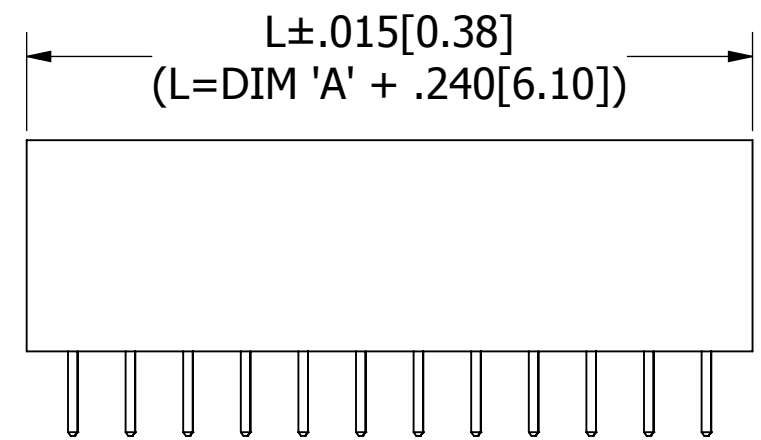
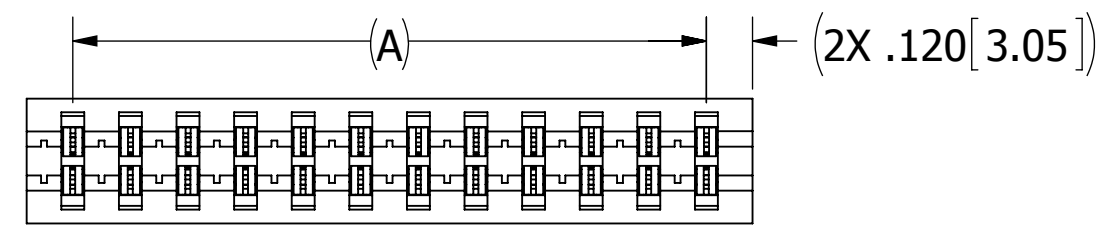
8 7 6 5 4 3 2 1

F E D C B A



--- J --- DSCN  
--- J --- DMCN

--- J --- DSCI  
--- J --- DMCI



--- J --- DSCB  
--- J --- DMCB

# CUSTOMER COPY



UNLESS OTHERWISE SPECIFIED:  
DIMENSIONS ARE IN INCHES [MM]

TOLERANCES:  
ANGULAR: ± 1°

DECIMALS  
.XX = ± .02 [.5]  
.XXX = ± .005 [.13]  
.XXXX = ± .0005 [.013]

| DRAWN | DATE      | NAME |
|-------|-----------|------|
|       | 5/31/2011 | SE   |

THE INFORMATION HEREIN CONTAINS PROPRIETARY INFORMATION OF SULLINS ELECTRONICS AND IS NOT TO BE REPRODUCED, USED OR DISCLOSED TO OTHERS FOR ANY PURPOSE EXCEPT AS SPECIFICALLY AUTHORIZED IN WRITING BY AN OFFICER OF SULLINS ELECTRONICS.



|  |                    |                    |
|--|--------------------|--------------------|
| TITLE<br>EDGE CARD, .150" PITCH, HP    |                    |                    |
| PART NUMBER<br>--- J --- DSC (DMC) --- |                    |                    |
| SIZE<br>C                              | CAGE CODE<br>54453 | DWG. NO.<br>C11696 |
| SCALE: 2:1                             | SHEET 2 OF 3       |                    |

8 7 6 5 4 3 2 1

