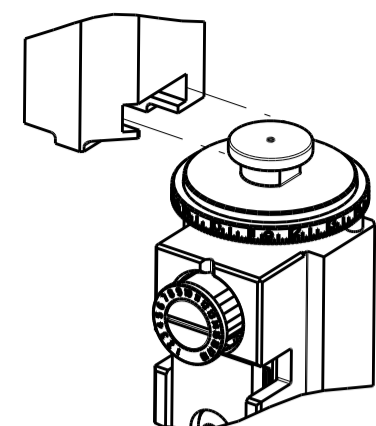


PART NUMBER	REVISION	DESCRIPTION	FEED TYPE
2151761-2	E	FINE CRIMP HEIGHT ADJUST	PNEUMATIC
7-2151761-2	E	PNEUMATIC AND CRIMP TOOLING KIT	PNEUMATIC
7-2151761-7	A	CRIMP TOOLING KIT	-

ATLANTIC VERSION TERMINATOR INTERFACE ADAPTER



APPLICATOR DATA		
CRIMP	SIZE	TYPE
WIRE	6.30 mm [.248]	F
INSUL	8.50 mm [.335]	F

APPLICATOR INSTRUCTIONS
408-35042

TERMINAL DATA: YAZAKI TERMINAL YAZAKI CRIMP SPECIFICATION			
TERMINAL NAME: L TYPE CONNECTOR			
WIRE STRIP LENGTH	INSULATION DIAMETER RANGE	TERMINAL APPLICATION SPECIFICATION	TERMINALS APPLIED
7.50-8.50 mm [.295-.335 IN]	Ø4.90-5.80 mm [.193-.228 IN]	WA1802	
TE TERMINAL YAZAKI TERMINAL TE TERMINAL YAZAKI TERMINAL			
1949899-1	7114-3250		

TERMINAL DATA: YAZAKI TERMINAL YAZAKI CRIMP SPECIFICATION			
TERMINAL NAME: 9.5MM RECEPTACLE			
WIRE STRIP LENGTH	INSULATION DIAMETER RANGE	TERMINAL APPLICATION SPECIFICATION	TERMINALS APPLIED
7.50-8.50 mm [.295-.335 IN]	Ø4.90-5.80 mm [.193-.228 IN]	WA1802	
TE TERMINAL YAZAKI TERMINAL TE TERMINAL YAZAKI TERMINAL			
1572755-1	7116-3250		

WIRE SIZE	CRIMP HEIGHT mm [INCH]	CRIMP HEIGHT REFERENCE SETTING
8.00mm2	2.70+/-0.05 [.106+/-0.002]	3.6
7.00mm2	2.75+/-0.05 [.108+/-0.002]	2.8
6.00mm2	2.50+/-0.05 [.098+/-0.002]	5.9
5.00mm2	2.40+/-0.05 [.094+/-0.002]	6.8

WIRE SIZE	CRIMP HEIGHT mm [INCH]	CRIMP HEIGHT REFERENCE SETTING
8.00mm2	2.75+/-0.05 [.108+/-0.002]	2.8
7.00mm2	2.75+/-0.05 [.108+/-0.002]	2.8
6.00mm2	2.60+/-0.05 [.102+/-0.002]	4.8
5.00mm2	2.40+/-0.05 [.094+/-0.002]	6.8

- 1. RECOMMENDED SPARE PARTS
- 2. REFER TO SUPPLIED INSTRUCTION SHEET FOR CLEANING, LUBRICATION AND STORAGE OF APPLICATOR.
- 3. APPLY PART NUMBER 2-23419-6 LOCTITE TO THREADS OF ITEM 242.
- 4. CRIMP HEIGHT REFERENCE SETTING WAS THE SETTING USED WHEN THE APPLICATOR WAS QUALIFIED AT THE FACTORY. ADJUSTMENT MAY BE NECESSARY WHEN RUNNING APPLICATOR IN THE FIELD.
- 5. TERMINAL PITCH NOT COMPATIBLE WITH MECHANICAL FEED.
- 6. UNLESS SPECIFIED OTHERWISE TORQUE VALUES SHALL BE USED PER DOCUMENT, 101-35000.

***WARNING**
ON INSTALLATION, SET WIRE DISC TO CRIMP HEIGHT REFERENCE SETTING FOR LARGEST WIRE SIZE. CRIMP HEIGHT REFERENCE SETTINGS GREATER THAN THE VALUE SHOWN MAY CAUSE DAMAGE TO THE CRIMP TOOLING, REFER TO THE INSTRUCTION SHEET FOR PROPER SETUP AND ADJUSTMENTS.

ATLANTIC VERSION
Shown on sheets 1 of 4 & 2 of 4
(Pacific version shown on sheets 3 of 4 & 4 of 4)

LOC	DIST	REV	DATE	BY	CHK	APP'D
A	66	B	02JAN2015	MR	GB	
		C	16MAY2018	AW	CT	
		D	30SEP2018	MZ	KZ	
		E	21JUN2019	FJ	TE	

QTY	LOC	DIST	REV	DESCRIPTION	DATE	BY	CHK	APP'D
-	2	2		2168083-2 SCR, SKT HD CAP, RoHS, M4 X 8.0				269
-	1	1		1633782-2 FENCE				267
-	1	1		1803078-2 SPACER, PRECISION				259
-	1	1		2119641-1 FEED CAM, AIR FEED				248
-	1	1		2119082-7 CAM, SNAIL, INSULATION ADJUSTMENT				244
-	1	1		2079764-1 WASHER, WAVE SPRING, CREST-TO-CREST				243
-	1	1		2119083-1 RETAINER, INSULATION DIAL				242
-	1	1		7-18023-7 SCR, SKT HD CAP M3 X 4.0				241
-	1	1		2844940-2 AIR FEED MODULE				238
-	REF	REF		994970-2 COUNTER, MAGNETIC				164
-	1	1		455888-1 SPACER, CRIMPER				120
-	1	1		2844908-1 SCREW, LOCKING				99
-	1	1		2844907-1 POST, LOCKING				98
-	1	1		1-690438-0 FRONT STRIP GUIDE				96
-	2	2		2168083-1 SCR, SKT HD CAP, RoHS, M3 X 8.0				95
-	1	1		1-455888-5 SPACER, CRIMPER				82
-	2	2		2079383-4 SCR, BHSC, RoHS (M4 X 8)				79
-	1	1		1803096-1 EXTENSION PLATE				78
-	1	1		1803607-3 DOCUMENTATION PACKAGE				71
-	1	1		2119791-5 DEPRESSOR, WIRE				70
-	1	1		2119943-1 WASHER, SPACER				69
-	1	1		2119740-1 TAG IDENTIFICATION				67
-	2	2		2168078-1 SCREW, DRIVE, RH, RoHS, 2 x .188				66
-	2	2		2-18032-5 SCR, SET, FLT PNT, M5 X 20.0				61
-	1	1		2168083-2 SCR, SKT HD CAP, RoHS, M4 X 8.0				60
-	1	1		5-18022-5 SCR, HEX HD CAP, M4 X 6.0				59
-	1	1		1338683-8 FEED PAWL				56
-	4	4		2168083-3 SCR, SKT HD CAP, RoHS, M4 X 12.0				54
-	2	2		2168083-8 SCR, SKT HD CAP, RoHS, M4 X 16				53
-	1	1		5018030-1 NUT, HEX, REG, RoHS, M3				52
-	1	1		811242-5 BUMPER, HOLD DOWN				51
-	1	1		690753-2 SPACER, TONKER				50
-	1	1		18023-9 SCR, SKT HD CAP M4 X 6.0				49
-	1	1		1803583-9 APPLICATOR BASIC ASSEMBLY, SF				46
-	1	1		1803515-2 RAM ASSEMBLY, SF ATLANTIC				44
-	1	1		1803602-2 SCR, BHSC, RoHS (M8 X 40)				41
-	1	1		1-1752356-8 SUPPORT, TERMINAL				34
-	2	2		2079383-5 SCR, BHSC, RoHS (M4 X 20)				33
-	2	2		2-2844962-3 SPACER, CYLINDRICAL, STRIP GUIDE				30
-	1	1		2844992-3 ASSEMBLY, STRIP GUIDE				29
-	1	1		1-455888-0 SPACER, CRIMPER				28
-	2	2		22283-1 SPRING, COMPRESSION				27
-	1	1		356835-1 LEVER, DRAG RELEASE				26
-	1	1		240792-1 DRAG, TERMINAL				25
-	1	1		1320928-6 STRIP GUIDE				24
-	1	1		980371-4 SCR, SKT HD SHLDR 5.0 DIA X 6.0				23
-	1	1		2168083-2 SCR, SKT HD CAP, RoHS, M4 X 8.0				21
-	2	2		1-18028-2 WASHER, FLAT, REG M4				20
-	1	1		2119533-1 STRIPPER, SIDE FEED				19
-	1	1		2119806-1 INSERT, SHEAR				13
-	1	1		3-22280-3 SPRING, COMPRESSION				12
-	1	1		1-356885-4 STOP, SHEAR				11
-	1	1		2119805-1 SHEAR HOLDER, FRONT				10
-	1	1		454276-5 FLOATING SHEAR, FRONT				9
1	2	1		1-1633930-2 ANVIL, COMBINATION				8
-	1	1		1-240641-4 SPACER				7
-	-	-		-				6
-	1	1		1-2119757-0 DEPRESSOR, SHEAR				5
-	1	1		238011-3 BLOCK, CRIMPER SPACER				4
1	2	1		6-2119582-3 CRIMPER, INSULATION F PREMIUM				3
-	1	1		455888-1 SPACER, CRIMPER				2
1	2	1		4-1633664-6 CRIMPER, WIRE				1

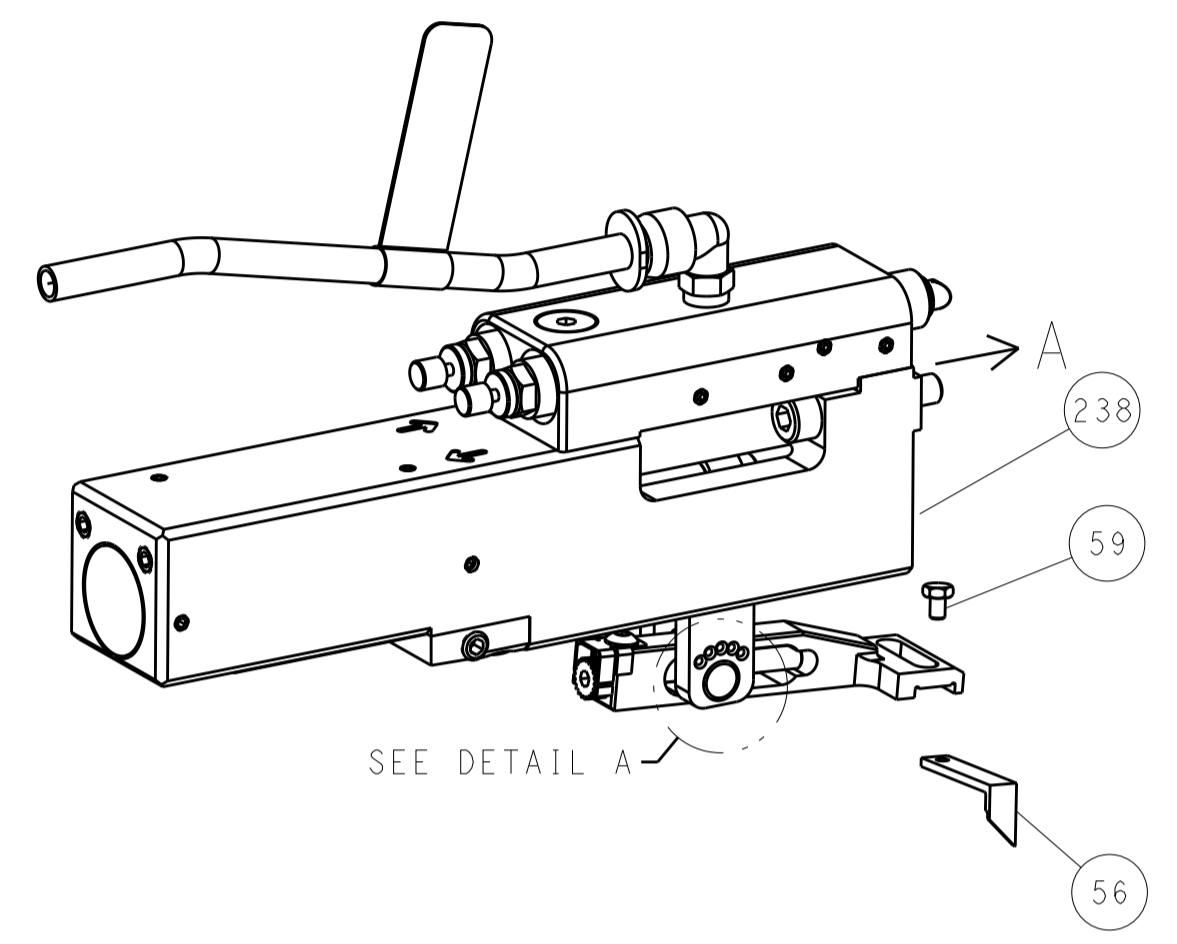
DIMENSIONS:		TOLERANCES UNLESS OTHERWISE SPECIFIED:		MATERIAL:		FINISH:	
mm	0 PLC ±	1 PLC ±	2 PLC ±	3 PLC ±	4 PLC ±	ANGLES ±	

DATE	19NOV2012	CHK	H. HUANG	DATE	19NOV2012	CHK	S. XI
DATE	19NOV2012	APP'D	S. XI	DATE	19NOV2012	APP'D	S. XI
PRODUCT SPEC	NAME: Ocean Side Feed Applicator						
APPLICATION SPEC	SIZE: CAGE CODE: DRAWING NO: RESTRICTED TO						
WEIGHT	A1 00779 ©=2151761						
CUSTOMER ACCESSIBLE PRODUCTION DRAWING SCALE: 1:2 SHEET 1 OF 4 REV E							

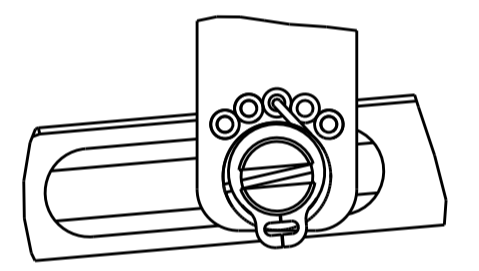
LOC	DIST	REVISIONS					
		P	LTN	DESCRIPTION	DATE	DWN	APVD
A	66	-	-	SEE SHEET 1	-	-	-

FEED TYPE

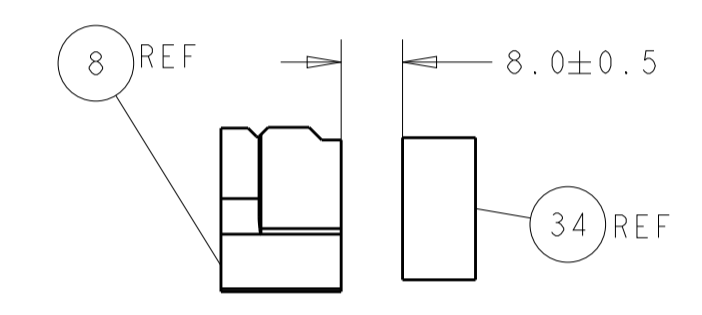
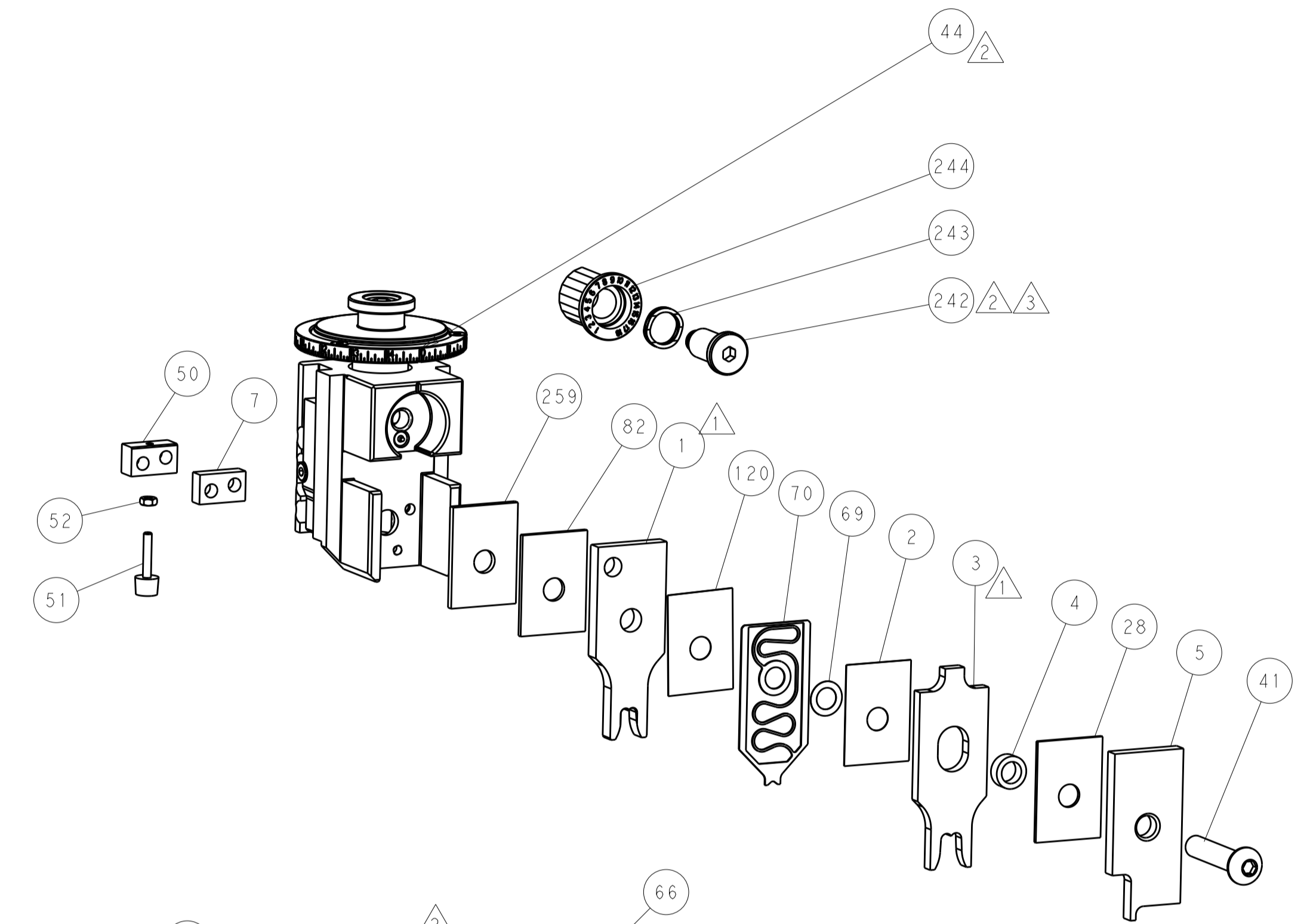
PNEUMATIC



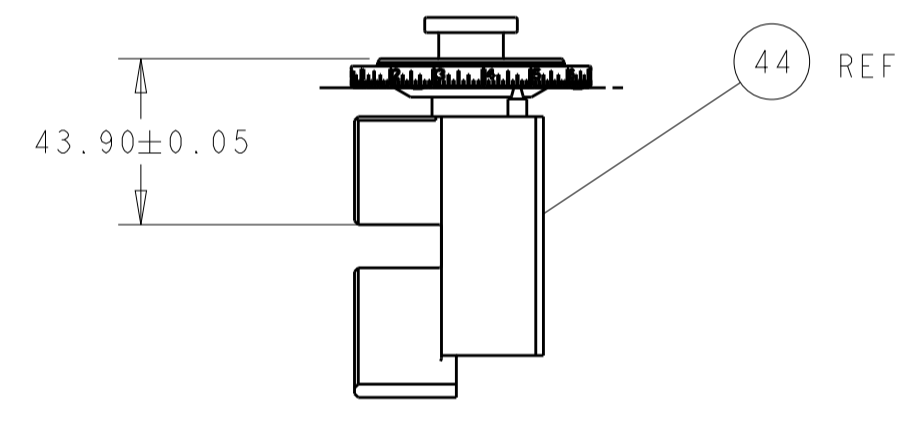
FEED SPRING SETTING POSITION
(SHOWN FROM REAR SIDE)



DETAIL A

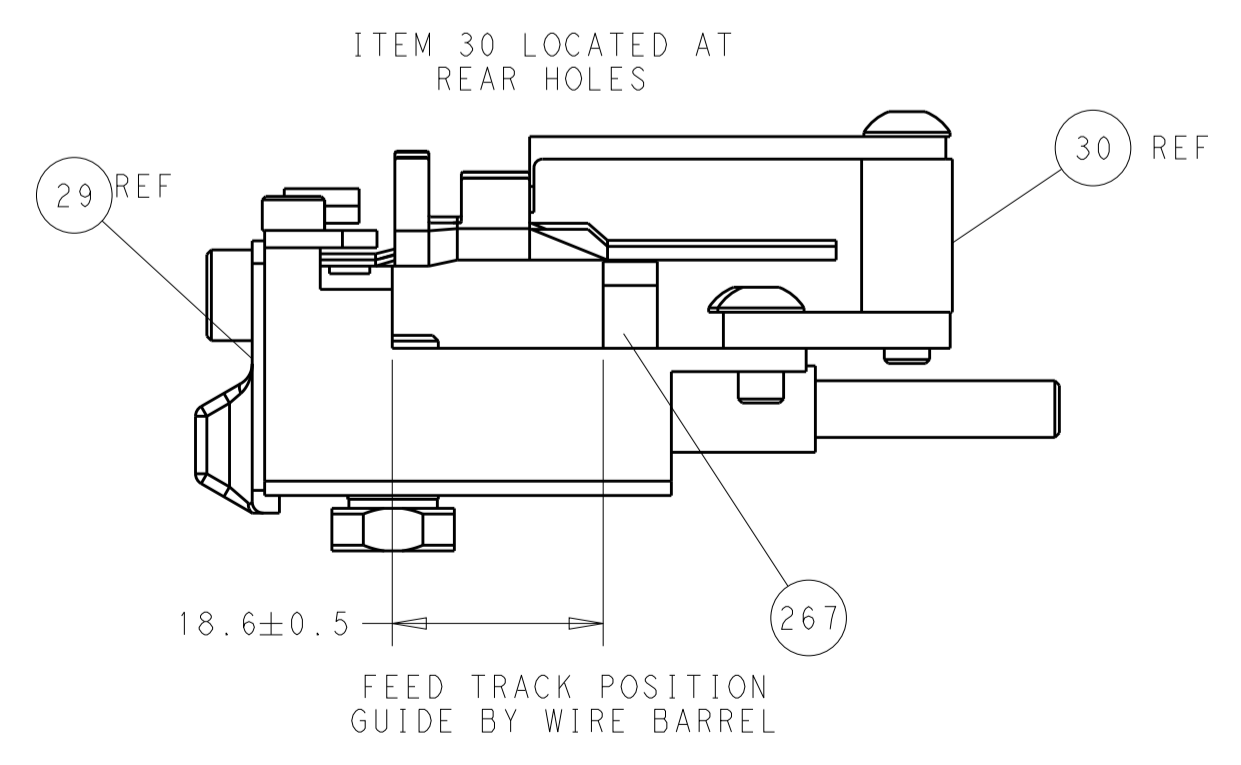
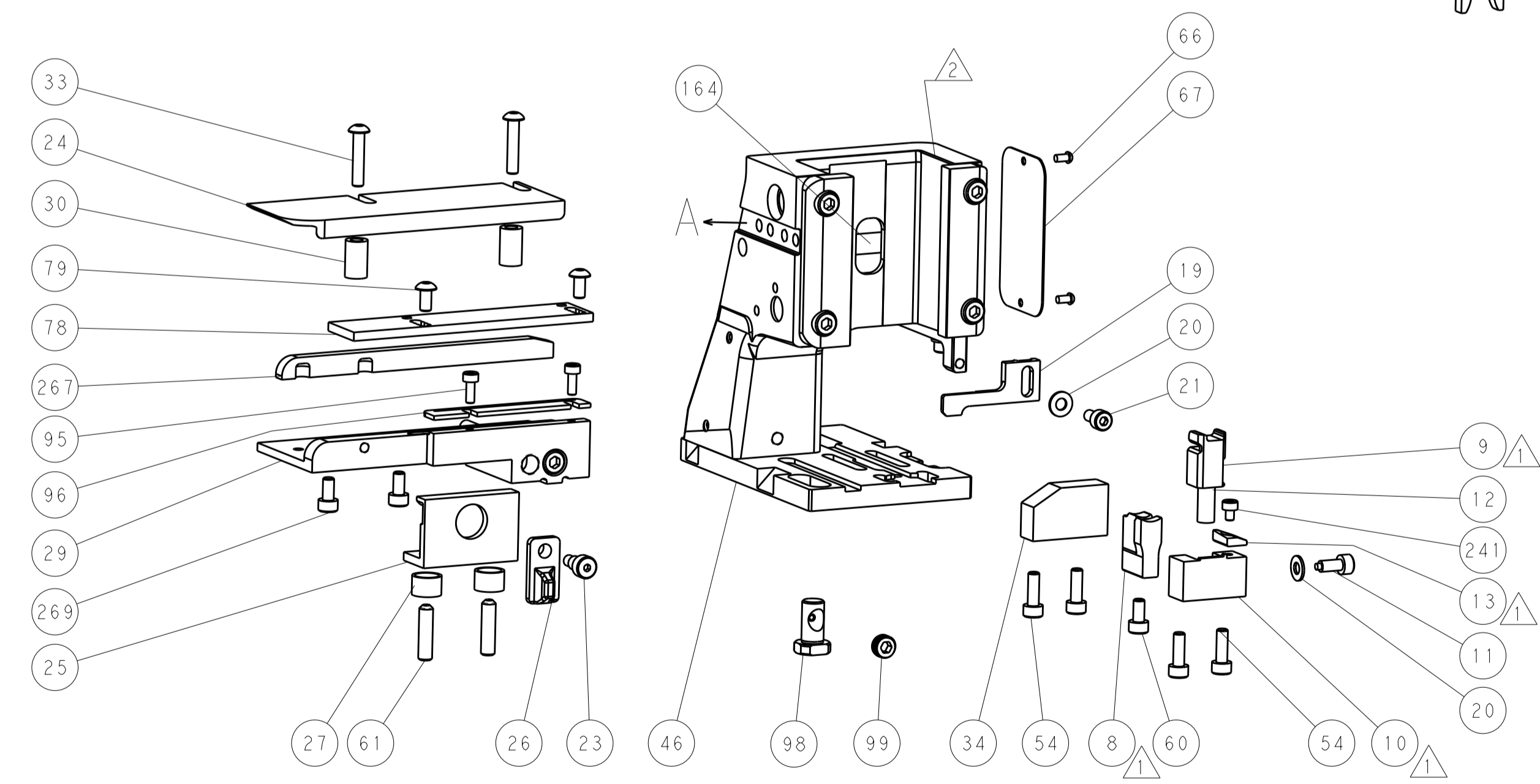
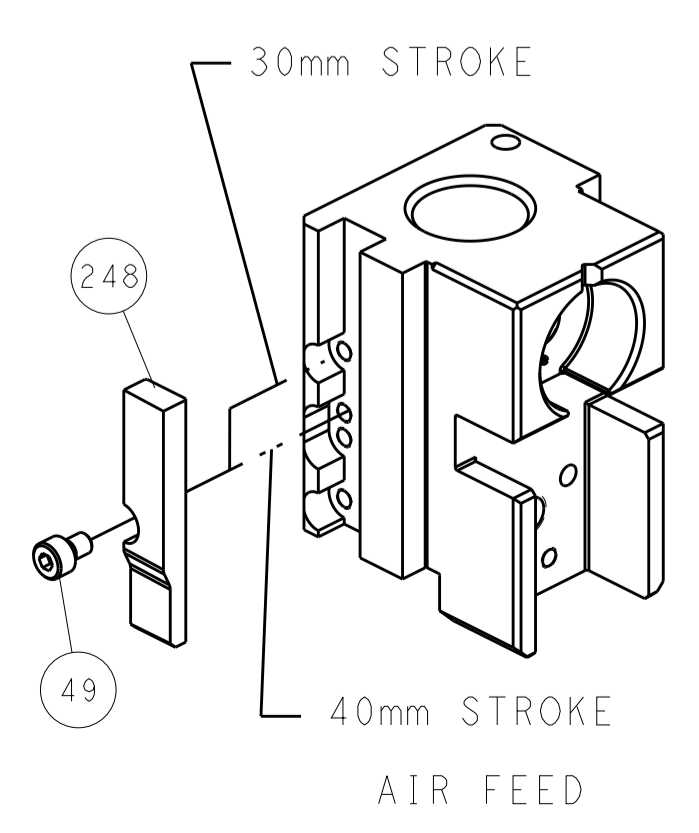


TERMINAL SUPPORT LOCATION



RAM SET-UP

CAM POSITION



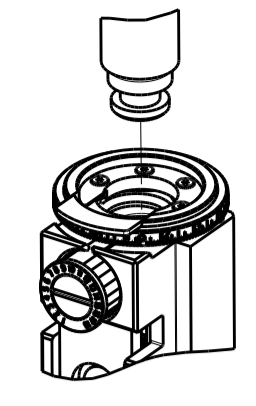
FEED TRACK POSITION
GUIDE BY WIRE BARREL

ATLANTIC VERSION
 Shown on sheets 1 of 4 & 2 of 4
 (Pacific version shown on sheets 3 of 4 & 4 of 4)

DIMENSIONS:		TOLERANCES UNLESS OTHERWISE SPECIFIED:		DWN	19NOV2012	TE Connectivity Harrisburg, PA 17105-3608	
mm	0 PLC ±	1 PLC ±	2 PLC ±	CHK	19NOV2012		
	3 PLC ±	4 PLC ±	ANGLES ±	APVD	19NOV2012	NAME	
MATERIAL	FINISH	WEIGHT	CUSTOMER ACCESSIBLE PRODUCTION DRAWING	SCALE	1:2	SHEET 2 OF 4	REV E

PART NUMBER	REVISION	DESCRIPTION	FEED TYPE
2-2151761-2	E	FINE CRIMP HEIGHT ADJUST	PNEUMATIC
7-2151761-7	A	CRIMP TOOLING KIT	-

PACIFIC VERSION TERMINATOR
 INTERFACE ADAPTER



APPLICATOR DATA

CRIMP	SIZE	TYPE
WIRE	6.30 mm [.248]	F
INSUL	8.50 mm [.335]	F

APPLICATOR INSTRUCTIONS
 408-35042

TERMINAL DATA: YAZAKI TERMINAL YAZAKI CRIMP SPECIFICATION

TERMINAL NAME: L TYPE CONNECTOR

WIRE STRIP LENGTH	INSULATION DIAMETER RANGE
7.50-8.50 mm [.295-.335 IN]	∅4.90-5.80 mm [.193-.228 IN]

TERMINAL APPLICATION SPECIFICATION
 WA1802

TERMINALS APPLIED

TE TERMINAL	YAZAKI TERMINAL	TE TERMINAL	YAZAKI TERMINAL
1949899-1	7114-3250		

TERMINAL DATA: YAZAKI TERMINAL YAZAKI CRIMP SPECIFICATION

TERMINAL NAME: 9.5MM RECEPTACLE

WIRE STRIP LENGTH	INSULATION DIAMETER RANGE
7.50-8.50 mm [.295-.335 IN]	∅4.90-5.80 mm [.193-.228 IN]

TERMINAL APPLICATION SPECIFICATION
 WA1802

TERMINALS APPLIED

TE TERMINAL	YAZAKI TERMINAL	TE TERMINAL	YAZAKI TERMINAL
1572755-1	7116-3250		

WIRE SIZE	CRIMP HEIGHT mm [INCH]	CRIMP HEIGHT REFERENCE SETTING
8.00mm2	2.70+/-0.05 [.106+/- .002]	3.6
7.00mm2	2.75+/-0.05 [.108+/- .002]	2.8
6.00mm2	2.50+/-0.05 [.098+/- .002]	5.9
5.00mm2	2.40+/-0.05 [.094+/- .002]	6.8

WIRE SIZE	CRIMP HEIGHT mm [INCH]	CRIMP HEIGHT REFERENCE SETTING
8.00mm2	2.75+/-0.05 [.108+/- .002]	2.8
7.00mm2	2.75+/-0.05 [.108+/- .002]	2.8
6.00mm2	2.60+/-0.05 [.102+/- .002]	4.8
5.00mm2	2.40+/-0.05 [.094+/- .002]	6.8

- RECOMMENDED SPARE PARTS
- REFER TO SUPPLIED INSTRUCTION SHEET FOR CLEANING, LUBRICATION AND STORAGE OF APPLICATOR.
- APPLY PART NUMBER 2-23419-6 LOCTITE TO THREADS OF ITEM 242.
- CRIMP HEIGHT REFERENCE SETTING WAS THE SETTING USED WHEN THE APPLICATOR WAS QUALIFIED AT THE FACTORY. ADJUSTMENT MAY BE NECESSARY WHEN RUNNING APPLICATOR IN THE FIELD.
- TERMINAL PITCH NOT COMPATIBLE WITH MECHANICAL FEED.
- UNLESS SPECIFIED OTHERWISE TORQUE VALUES SHALL BE USED PER DOCUMENT, 101-35000.

***WARNING**
 ON INSTALLATION, SET WIRE DISC TO CRIMP HEIGHT REFERENCE SETTING FOR LARGEST WIRE SIZE. CRIMP HEIGHT REFERENCE SETTINGS GREATER THAN THE VALUE SHOWN MAY CAUSE DAMAGE TO THE CRIMP TOOLING, REFER TO THE INSTRUCTION SHEET FOR PROPER SETUP AND ADJUSTMENTS.

LOC	DIST	REV	DATE	BY	APPV
A	66				

REV	DATE	DESCRIPTION	ITEM NO
-	2	2168083-2 SCR, SKT HD CAP, RoHS, M4 X 8.0	269
-	1	1633782-2 FENCE	267
-	1	1803078-2 SPACER, PRECISION	259
-	1	2119082-7 CAM, SNAIL, INSULATION ADJUSTMENT	244
-	1	2079764-1 WASHER, WAVE SPRING, CREST-TO-CREST	243
-	1	2119083-1 RETAINER, INSULATION DIAL	242
-	1	7-18023-7 SCR, SKT HD CAP M3 X 4.0	241
-	1	2844940-2 AIR FEED MODULE	238
-	REF	994970-2 COUNTER, MAGNETIC	164
-	1	2119641-2 FEED CAM, AIR FEED	151
-	1	2168083-8 SCR, SKT HD CAP, RoHS, M4 X 16	144
-	4	2168083-9 SCR, SKT HD CAP, RoHS, M4 X 20	143
-	1	1-1803583-0 APPLICATOR BASIC ASSEMBLY, SF	141
-	1	1803516-2 RAM ASSEMBLY, SF PACIFIC	140
-	1	455888-1 SPACER, CRIMPER	120
-	1	2844908-1 SCREW, LOCKING	99
-	1	2844907-1 POST, LOCKING	98
-	1	1-690438-0 FRONT STRIP GUIDE	96
-	2	2168083-1 SCR, SKT HD CAP, RoHS, M3 X 8.0	95
-	1	1-455888-5 SPACER, CRIMPER	82
-	2	2079383-4 SCR, BHSC, RoHS (M4 X 8)	79
-	1	1803096-1 EXTENSION PLATE	78
-	1	1803607-3 DOCUMENTATION PACKAGE	71
-	1	2119791-5 DEPRESSOR, WIRE	70
-	1	2119943-1 WASHER, SPACER	69
-	1	2119740-1 TAG, IDENTIFICATION	67
-	2	2168078-1 SCREW, DRIVE, RH, RoHS, 2 x .188	66
-	2	2-18032-5 SCR, SET, FLT PNT, M5 X 20.0	61
-	1	5-18022-5 SCR, HEX HD CAP, M4 X 6.0	59
-	1	1338683-8 FEED PAWL	56
-	2	2168083-8 SCR, SKT HD CAP, RoHS, M4 X 16	53
-	1	5018030-1 NUT, HEX, REG, RoHS, M3	52
-	1	811242-5 BUMPER, HOLD DOWN	51
-	1	690753-2 SPACER, TONKER	50
-	1	18023-9 SCR, SKT HD CAP M4 X 6.0	49
-	1	1803602-2 SCR, BHSC, RoHS (M8 X 40)	41
-	1	1-1752356-8 SUPPORT, TERMINAL	34
-	2	2079383-5 SCR, BHSC, RoHS (M4 X 20)	33
-	2	2-2844962-3 SPACER, CYLINDRICAL, STRIP GUIDE	30
-	1	2844992-3 ASSEMBLY, STRIP GUIDE	29
-	1	1-455888-0 SPACER, CRIMPER	28
-	2	22283-1 SPRING, COMPRESSION	27
-	1	356835-1 LEVER, DRAG RELEASE	26
-	1	240792-1 DRAG, TERMINAL	25
-	1	1320928-6 STRIP GUIDE	24
-	1	980371-4 SCR, SKT HD SHLDR 5.0 DIA X 6.0	23
-	1	2168083-2 SCR, SKT HD CAP, RoHS, M4 X 8.0	21
-	2	1-18028-2 WASHER, FLAT, REG M4	20
-	1	2119533-1 STRIPPER, SIDE FEED	19
-	1	2119806-1 INSERT, SHEAR	13
-	1	3-22280-3 SPRING, COMPRESSION	12
-	1	1-356885-4 STOP, SHEAR	11
-	1	2119805-1 SHEAR HOLDER, FRONT	10
-	1	454276-5 FLOATING SHEAR, FRONT	9
-	1	1-1633930-2 ANVIL, COMBINATION	8
-	1	1-240641-4 SPACER	7
-	-	-	6
-	1	1-2119757-0 DEPRESSOR, SHEAR	5
-	1	238011-3 BLOCK, CRIMPER SPACER	4
-	1	6-2119582-3 CRIMPER, INSULATION F PREMIUM	3
-	1	455888-1 SPACER, CRIMPER	2
-	1	4-1633664-6 CRIMPER, WIRE	1
-	77	-22 PART NO	

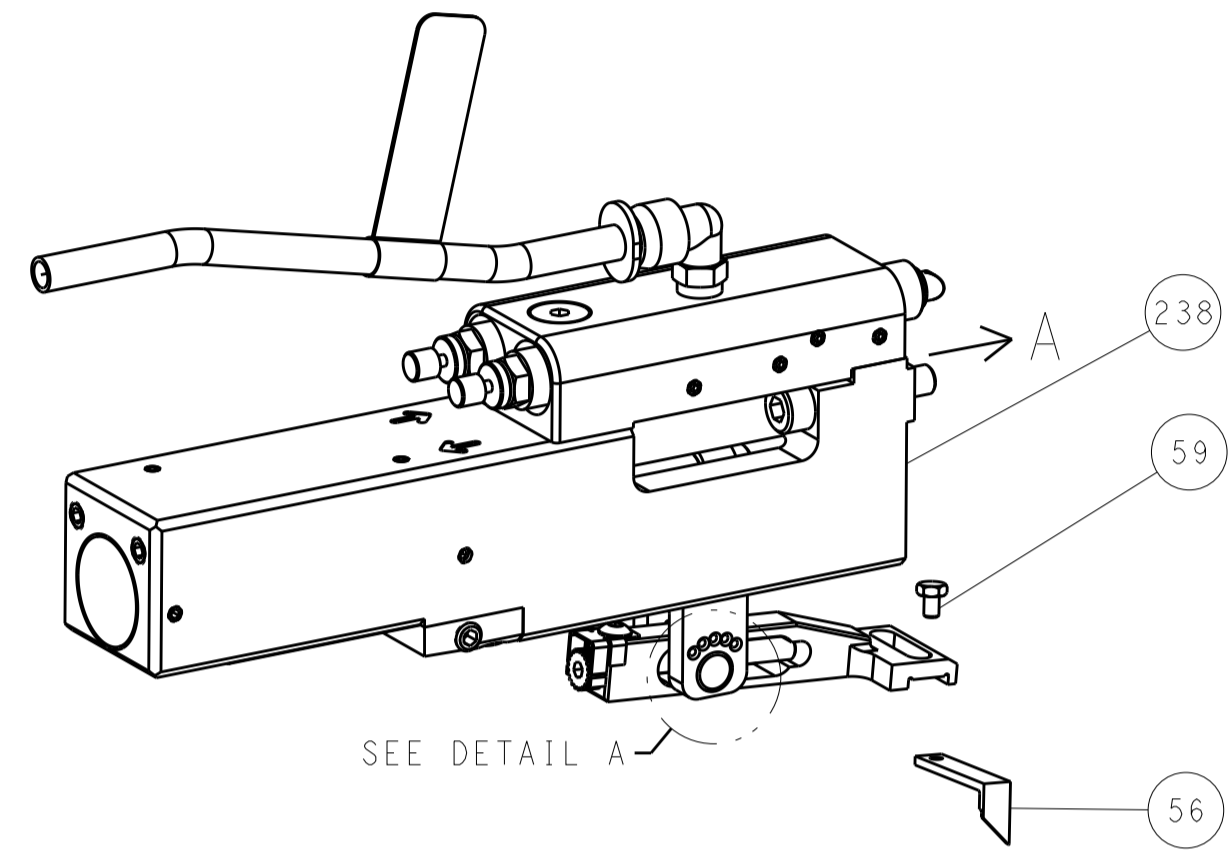
PACIFIC VERSION
 Shown on sheets 3 of 4 & 4 of 4
 (Atlantic version shown on sheets 1 of 4 & 2 of 4)

DIMENSIONS: mm TOLERANCES UNLESS OTHERWISE SPECIFIED: 0 PLC ± 1 PLC ± 2 PLC ± 3 PLC ± 4 PLC ± ANGLES ± FINISH		DWN: H. HUANG 19NOV2012 CHK: S.XI 19NOV2012 APVD: S.XI 19NOV2012		NAME: Ocean Side Feed Applicator SIZE: A1 CAGE CODE: 00779 DRAWING NO: C=2151761 SCALE: 1:2 SHEET: 3 OF 4 REV: E	
MATERIAL: -		WEIGHT: -		CUSTOMER ACCESSIBLE PRODUCTION DRAWING	

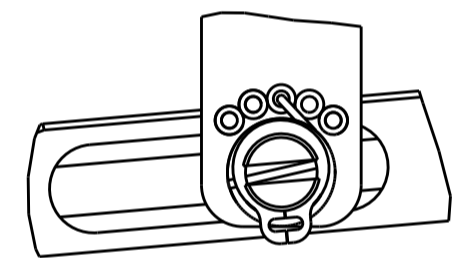
LOC		DIST		REVISIONS			
A	66	P	LTM	DESCRIPTION	DATE	OWN	APVD
-	-	-	-	SEE SHEET 1	-	-	-

FEED TYPE

PNEUMATIC

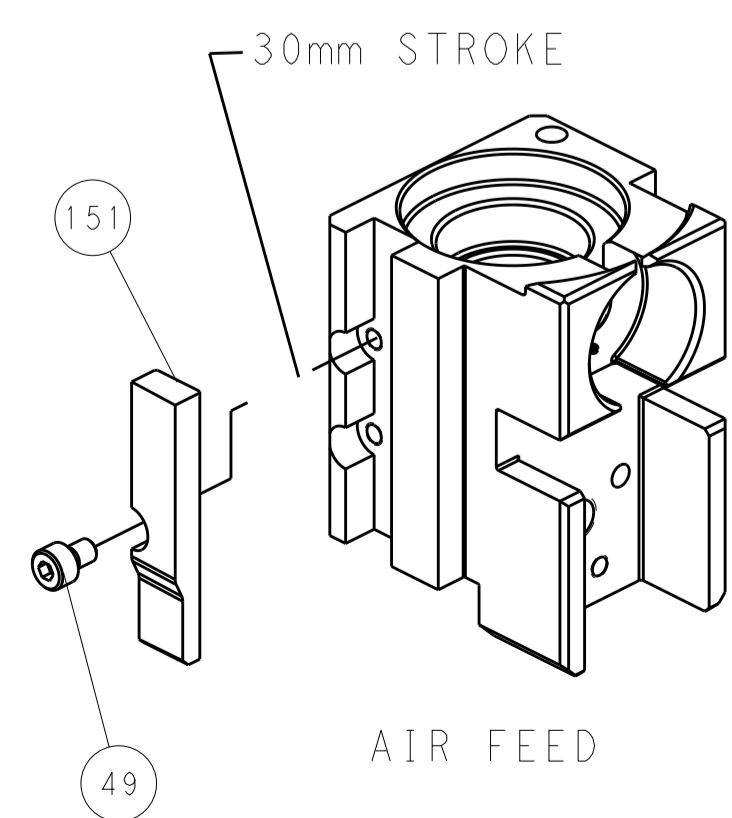


FEED SPRING SETTING POSITION (SHOWN FROM REAR SIDE)

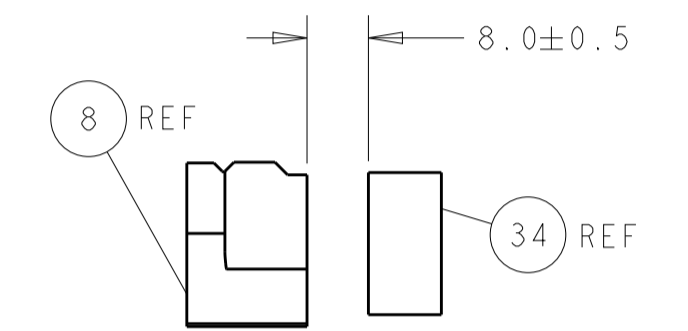
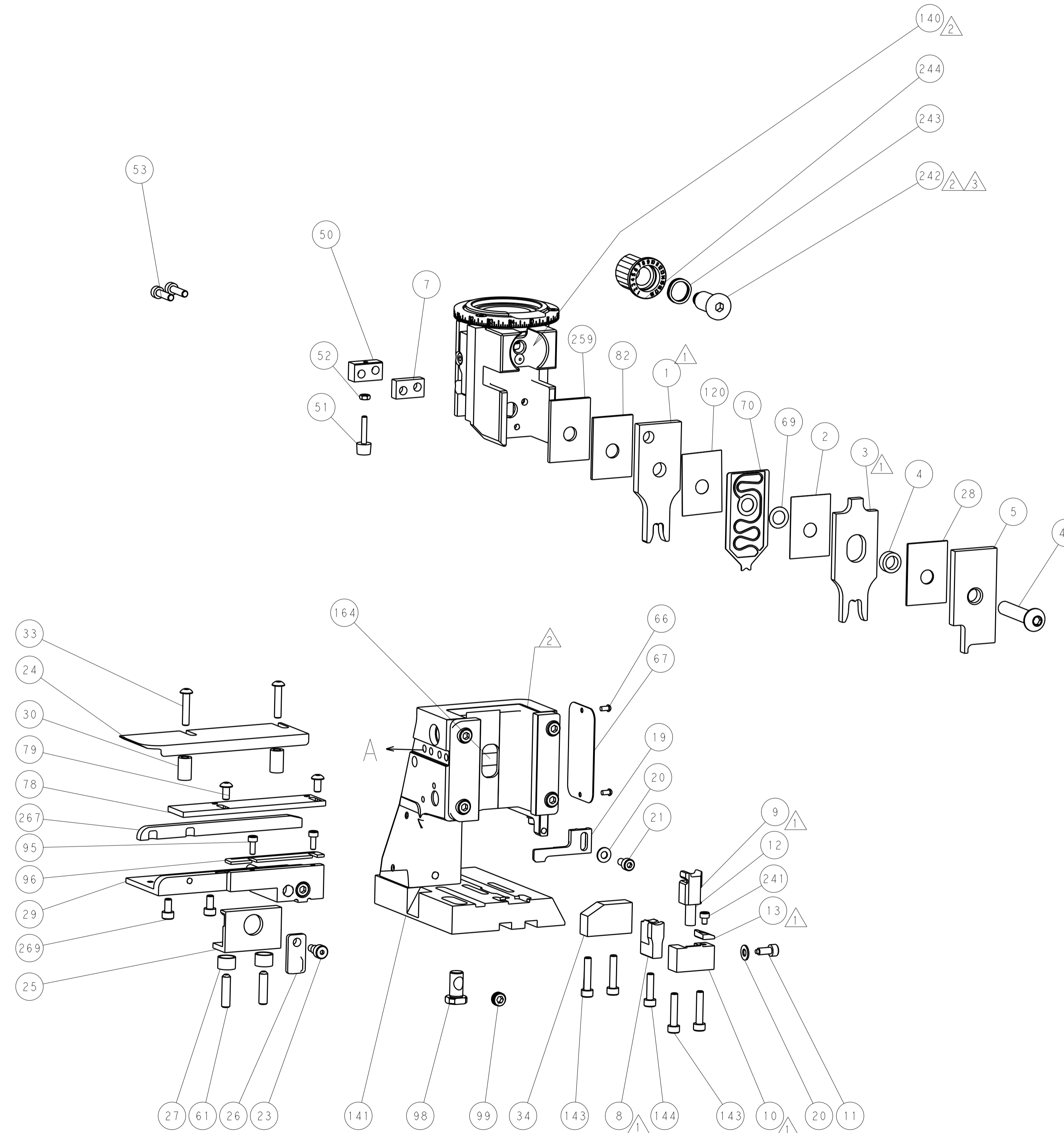


DETAIL A

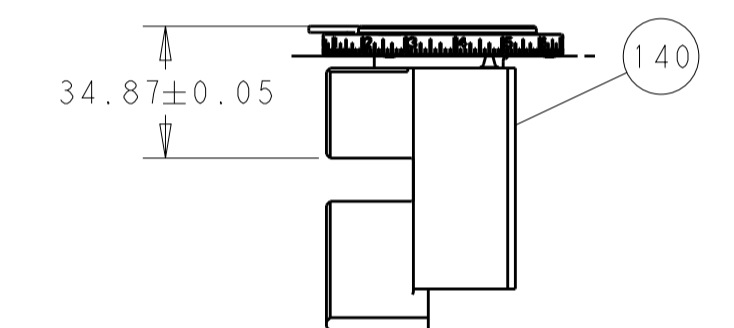
CAM POSITION



AIR FEED

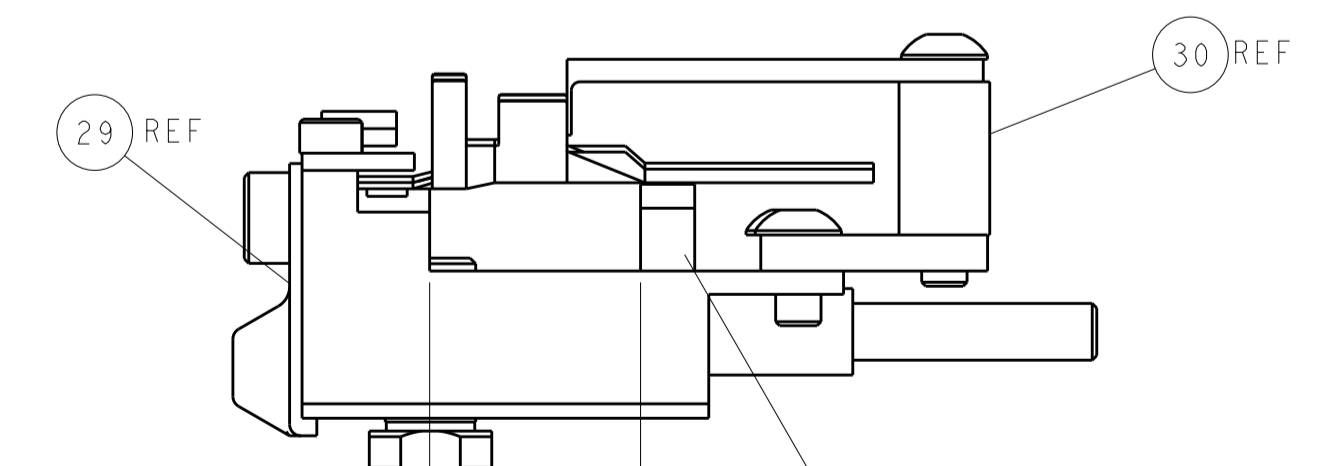


TERMINAL SUPPORT LOCATION



RAM SET-UP

ITEM 30 LOCATED AT REAR HOLES



FEED TRACK POSITION GUIDE BY WIRE BARREL

PACIFIC VERSION
 Shown on sheets 3 of 4 & 4 of 4
 (Atlantic version shown on sheets 1 of 4 & 2 of 4)

DIMENSIONS:		TOLERANCES UNLESS OTHERWISE SPECIFIED:		DWN R. HUANG 19NOV2012		STE TE Connectivity Harrisburg, PA 17105-3608	
mm	0 PLC	±		CHK S. XI 19NOV2012	NAME	Ocean Side Feed Applicator	
	1 PLC	±		APVD S. XI 19NOV2012	SIZE	CAGE CODE	DRAWING NO
	2 PLC	±		PRODUCT SPEC	RESTRICTED TO		
	3 PLC	±		APPLICATION SPEC	WEIGHT		
	4 PLC	±		ANGLES	MATERIAL		
	FINISH	±		CUSTOMER ACCESSIBLE PRODUCTION DRAWING	SCALE	SHEET	OF
					1:2	4	4
						REV	E