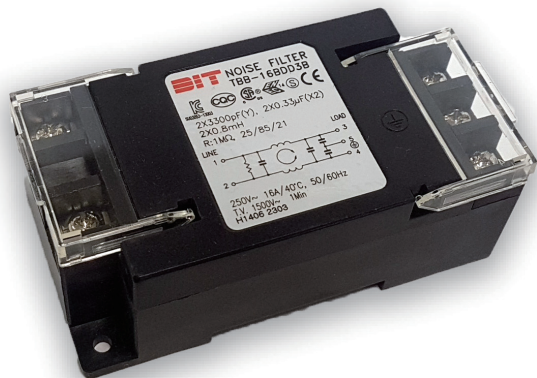


EMI/EMC FILTER

RoHS

TBB SERIES



Features

- Screw & DIN rail mount
- Easy connection and installation.(DIN rail mount)
- Excellent filtering characteristics for both differential mode and common mode
- Safety approval: KC, CQC, cCSAus, ENEC, SEMKO, CE
- Epoxy molded for reliability

Applications

- Battery, ESS equipments
- Use in industrial equipment, medical, gaming, other ground current-sensitive applications
- Electric vehicle charger
- For equipment requiring very high noise attenuation
- Measuring and testing instruments

Specifications

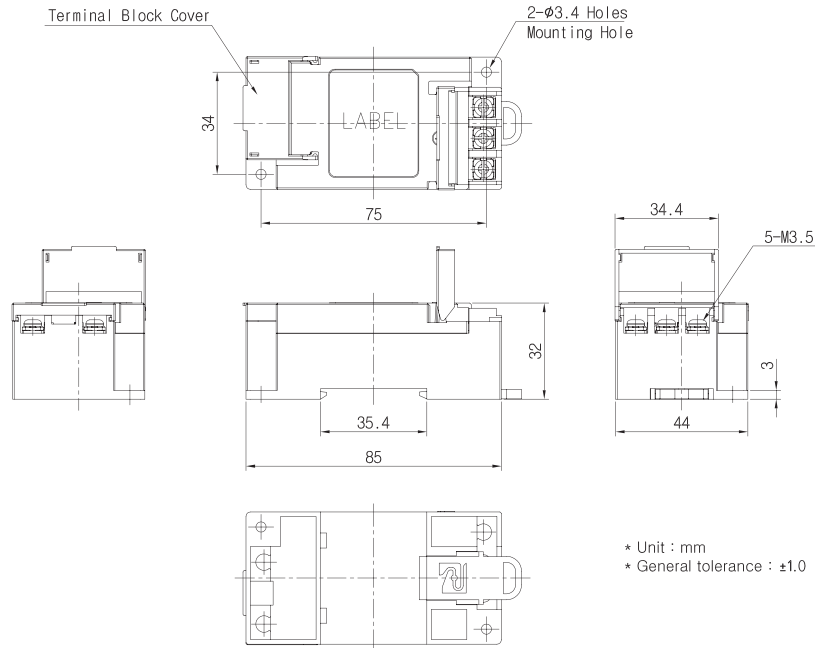
Model	Rated Voltage (AC, DC)	Rated Current	Leakage Current (250V AC)	Operating Temperature
TBB-06BDD3B	250V (50/60Hz)	6A	0.5mA max.	-25°C to +85°C Including temperature rise Derating Curve
TBB-10BDD3B		10A		
TBB-16BDD3B		16A		
TBB-20BDD3B		20A		

Note
 Test Voltage : 1500V AC for one minute, line to ground. (TBB-**BDD3B)
 Insulation Resistance : 300 Mohm min. at 500V DC, line to ground
 Voltage Drop : 1V max. at rated current

Model Number Construction

TB	B	06	B	DD	D	B
Terminal block	B : Compact	Rated Current 06 : 6A 10 : 10A 16 : 16A 20 : 20A	L1 μ : 5K	DD=CX1,2 : 0.33uF	D : CY1,2 - 470pF 3 : CY1,2 - 3300pF	B : Screw&Din Rail

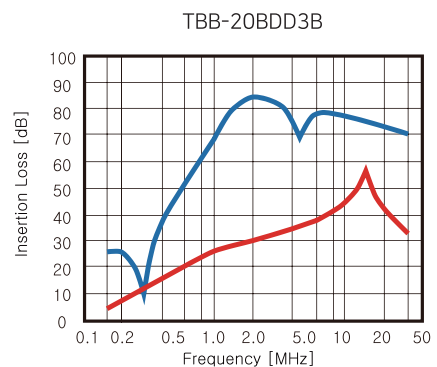
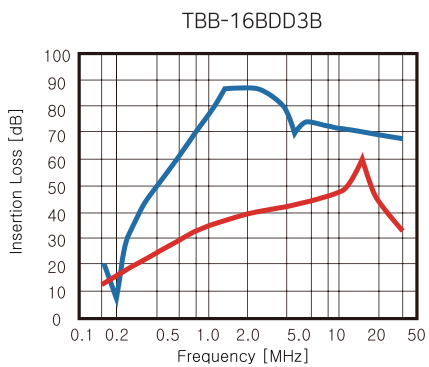
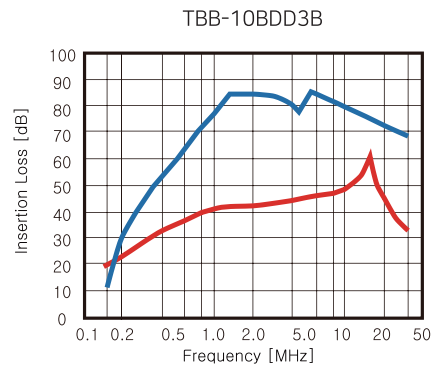
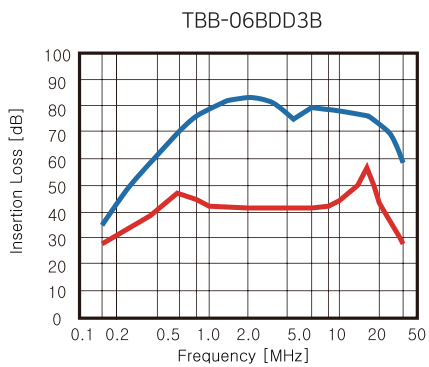
Shapes and Dimensions



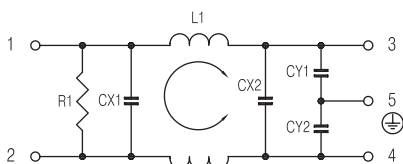
Attenuation Characteristics

Common mode (—————)

Normal mode (—————)



Circuit Diagram



Measurement Configuration

