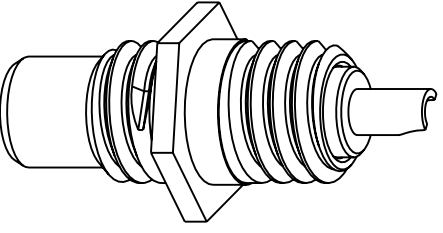


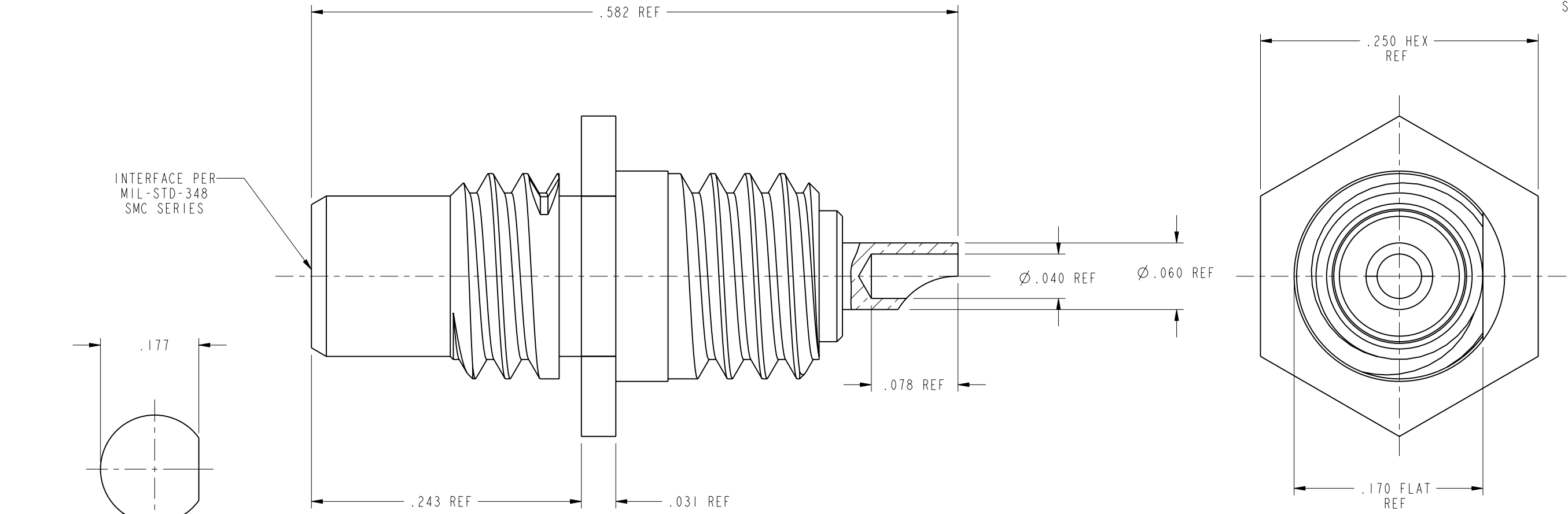
NOTES:

- 1. MATERIALS OF CONSTRUCTION:  
 BODY & CONTACT= BRASS, GOLD PLATED  
 INSULATOR = TFE, FLUOROCARBON

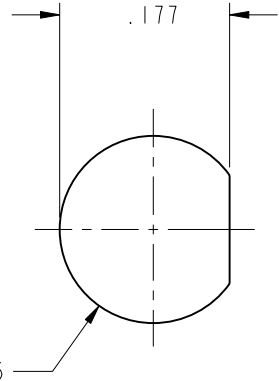
903-408J-52R		REVISIONS			
DRAWING NO.	REV	DESCRIPTION	DATE	ECO	APPR
THIRD ANGLE PROJ.	--	RELEASE TO MFG.			
	C	SEE SHEET 1	10/31/00	43528	CPM



SCALE 4.000



INTERFACE PER  
 MIL-STD-348  
 SMC SERIES



RECOMMENDED MOUNTING  
 HOLE DIMENSIONS  
 SCALE 5.000

**CUSTOMER OUTLINE DRAWING**  
 ALL OTHER SHEETS ARE FOR INTERNAL USE ONLY

UNLESS OTHERWISE SPECIFIED, DIMENSIONS ARE IN INCHES AND TOLERANCES ARE: 2 PLACE DECIMAL ±.015 (0,381 mm) 3 PLACE DECIMAL ±.005 (0,127 mm) ANGLES ± 1°	MATERIAL	DRAWN C. McGRATH	DATE 12-Oct-00	TITLE SMC JACK FRONT MOUNT RECEPTACLE	Amphenol RF Danbury, CT, USA Tainan, Taiwan Shenzhen, China www.amphenolrf.com
	REFERENCE GEN# ASSYFI_SMC	ENGINEER P. BRENZEL	DATE 12-Oct-00		
NOTICE - These drawings, specifications, or other data (1) are, and remain the property of Amphenol Corp. (2) must be returned upon request; and (3) are confidential and not to be disclosed to any person other than those to whom they are given by Amphenol Corp. The furnishing of these drawings, specifications, or other data by Amphenol Corp., or to any other person to anyone for any purpose is not to be regarded by implication or otherwise in any manner licensing, granting rights or permitting such holder or any other person to manufacture, use or sell any product, process or design, patented or otherwise, that may in any way be related to or disclosed by said drawings, specifications, or other data.		APPROVED	DATE		SCALE: 10.0:1 SHEET 2 OF 2
		CAD FILE I:\SMC\903-408J-52R	CODE ID 74868	DWG SIZE B	DRAWING NO. 903-408J-52R