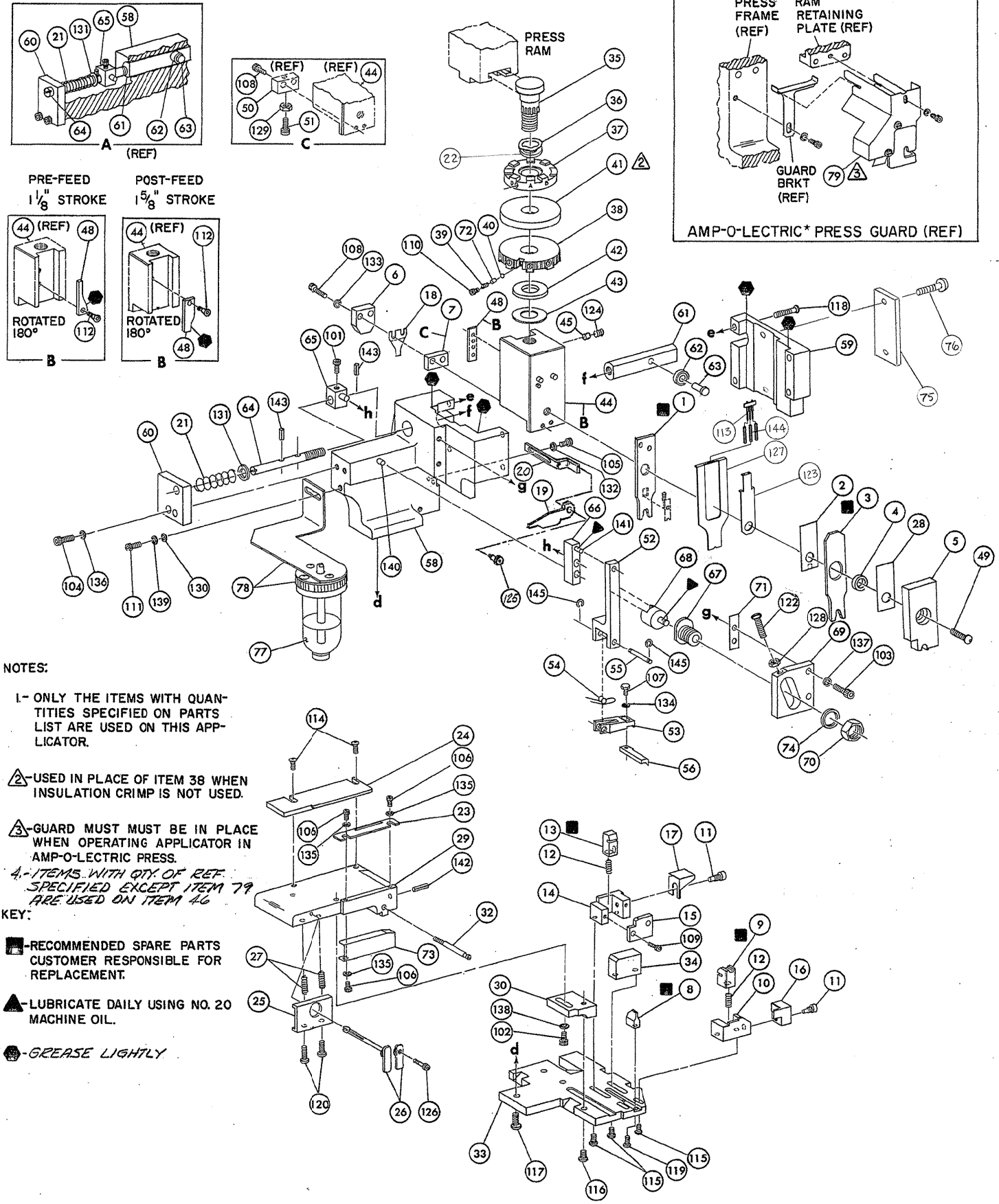


THIS DRAWING IS A CONTROLLED DOCUMENT.



- NOTES:**
- 1- ONLY THE ITEMS WITH QUANTITIES SPECIFIED ON PARTS LIST ARE USED ON THIS APPLICATOR.
 - ▲- USED IN PLACE OF ITEM 38 WHEN INSULATION CRIMP IS NOT USED.
 - ▲- GUARD MUST BE IN PLACE WHEN OPERATING APPLICATOR IN AMP-O-LECTRIC PRESS.
 - 4- ITEMS WITH QTY. OF REF. SPECIFIED EXCEPT ITEM 79 ARE USED ON ITEM 46.
- KEY:**
- RECOMMENDED SPARE PARTS CUSTOMER RESPONSIBLE FOR REPLACEMENT.
 - ▲- LUBRICATE DAILY USING NO. 20 MACHINE OIL.
 - GREASE LIGHTLY

QTY	PART NO	DESCRIPTION	ITEM NO
REF	21045-3	RING, RETAINING 'C' (.187 DIA) FEED FINGER PIN	145
3	1-23147-4	SPRING, COMPRESSION	144
REF	5-21028-1	PIN, SLOT SPR (.125 DIA X .50) ADJ ROD	143
1	4-21028-0	PIN, SLOT SPR (.093 DIA X .75) STR G PLATE	142
REF	1-21030-1	PIN, DOWEL (.187 DIA X .50) LEVER	141
REF	1-21030-6	PIN, DOWEL (.187 DIA X 1.25) HOUSING	140
REF	21024-5	WASHER, LOCK (NO 10) LUB ASSY	139
1	21024-5	WASHER, LOCK (NO 10) STRIP GUIDE ADJ BLOCK	138
REF	21024-5	WASHER, LOCK (NO 10) ADJ PLATE	137
REF	21024-5	WASHER, LOCK (NO 10) FEED GUIDE ROD	136
3	21057-2	WASHER, LOCK (NO 4) FRONT STRIP GUIDE	135
1	21024-4	WASHER, LOCK (NO 8) FEED FINGER	134
2	21024-4	WASHER, LOCK (NO 8) DEPRESSOR	133
1	21024-4	WASHER, LOCK (NO 8) STRIPPER	132
REF	21899-4	WASHER, FLAT (5/16 DIA) SCREW ADJ	131
REF	21899-2	WASHER, FLAT (NO 10) LUB ASSY	130
1	21068-5	NUT, HEX MACH (6-32) HOLDDOWN	129
REF	21068-5	NUT, HEX MACH (6-32) FEED ADJ	128
1	1490525-2	DEPRESSOR, WIRE	127
REF	22353-8	SCR, SHLD. (.187 DIA X .250 LG) DRAG LEVER	126
REF	456567-1	SCR, SHLD. (.188 DIA. X .125 LG) STRIPPER	125
1	21009-2	SCR, SKT SET (1/4-20 X .25) (LOC-WEL) RAM	124
1	1490524-2	SPACER, DEPRESSOR	123
REF	3-21064-2	SCR, RD HD MACH (6-32 X 1.50) FEED ADJ	122
2	2-21002-9	SCR, BUT HD SKT CAP (10-32 X .75) DRAG	120
1	22733-8	SCR, BUT HD SKT CAP (8-32 X .38) (LOC-WEL) ANVIL	119
REF	2-21002-9	SCR, BUT HD SKT CAP (10-32 X .75) CAP	118
REF	1-24073-9	SCR, BUT HD SKT CAP (1/4-20 X .75) HOUSING	117
REF	2-21002-7	SCR, BUT HD SKT CAP (10-32 X .50) SG ADJ BLOCK	116
2	2-21002-2	SCR, BUT HD SKT CAP (8-32 X .50) SHEAR	115
2	2-21002-2	SCR, BUT HD SKT CAP (8-32 X .50) R STRIP GUIDE	114
1	1424350-1	HOLDER, PIN, WIRED	113
1	2-21003-0	SCR, FLAT HD SKT CAP (6-32 X .50) CAM	112
REF	3-21000-4	SCR, SKT HD CAP (10-32 X .38) LUBRICATOR ASSY	111
1	23030-1	SCR, SKT HD CAP (6-32 X .25) (LOC-WEL) CP DISC	110
2	2-21000-7	SCR, SKT HD CAP (8-32 X .50) REAR SHEAR PLATE	109
1	2-21000-7	SCR, SKT HD CAP (8-32 X .50) DEPRESSOR	108
1	2-22603-0	SCR, HEX HD MACH (8-32 X .31) FEED FINGER	107
3	1-21000-3	SCR, SKT HD CAP (4-40 X .25) F STRIP GUIDE	106
1	2-21000-7	SCR, SKT HD CAP (8-32 X .50) STRIPPER	105
REF	3-21000-7	SCR, SKT HD CAP (10-32 X .75) FEED ROD GUIDE	104
REF	3-21000-6	SCR, SKT HD CAP (10-32 X .62) FEED ADJ BLOCK	103
1	3-21000-4	SCR, SKT HD CAP (10-32 X .38) SG ADJ BLOCK	102
REF	3-21000-4	SCR, SKT HD CAP (10-32 X .38) PIVOT BLOCK	101
REF	455749-1	GUARD, WINDOW	79
REF	1-465184-0	LUBRICATOR ASSY	78
2	21017-2	SCR, DRIVE (2 x .19) 1D PLATE	76
1	461264-1	PLATE, IDENTIFICATION	75
REF	458109-1	WASHER, SPECIAL	74
1	454877-3	PLATE, STRIP GUIDE COVER	73
1	690603-1	SPRING, ASSIST	72
REF	690517-1	SPACER	71
REF	22594-8	NUT, HEX	70
240628-1	PLATE, ADJUSTMENT	69	
240626-1	SHAFT, PIVOT	68	
240633-1	BUSHING	67	
455680-1	LEVER, INTERMEDIATE	66	
240629-1	BLOCK, PIVOT	65	
240632-2	SCREW, ADJUSTMENT FEED ROD	64	
240659-3	PIN, CAM ROLLER	63	
240658-1	ROLLER, CAM	62	
454398-2	ROD, FEED	61	
REF	454178-1	GUIDE, FEED ROD	60

QTY	PART NO	DESCRIPTION	ITEM NO
REF	454220-1	CAP, HOUSING	59
REF	454485-1	HOUSING	58
2	2-354779-7	PIN, WIRE DISC (.3100)	57
REF	458537-2	PAWL, FEED	56
REF	240624-1	PIN, FEED FINGER	55
REF	691499-1	SPRING, FEED FINGER	54
REF	690541-1	FINGER, FEED	53
REF	455679-1	LEVER, TERMINAL FEED ARM	52
REF	811242-2	BUMPER, HOLDDOWN	51
REF	690753-1	SPACER, TONKER	50
REF	7-21002-9	BOLT, CRIMPER	49
REF	690602-5	CAM PRE-FEED 1/8 STROKE	48
REF	354779-8	PIN, WIRE DISC (.3030)	47
REF	459456-1	APPLICATOR, BASIC (SUB ASSY)	46
REF	690191-1	PLUG, NYLON	45
REF	455673-1	RAM	44
REF	690125-1	WASHER, LAMINATED	43
REF	690124-1	WASHER, RAM	42
REF	23241-6	DISC, SPACER	41
REF	690170-1	BALL, STEEL	40
REF	690170-1	SPRING, COMPRESSION	39
REF	690432-1	DISC, INSULATION	38
REF	354777-1	DISC, WIRE	37
REF	22480-5	WASHER, SPRING	36
REF	690212-1	POST, RAM	35
REF	455675-1	SUPPORT, TERMINAL	34
REF	690432-3	PLATE, BASE	33
REF	8-354778-3	SCREW, ADJUSTMENT	32
REF	455689-1	PIN, WIRE DISC (.2910)	31
REF	453671-1	BLOCK, STRIP GUIDE ADJ	30
REF	1-455888-0	PLATE, STRIP GUIDE	29
REF	1-22284-0	SPACER, FRONT SHEAR DEPRESSOR	28
REF	690546-1	SPRING, DRAG	27
REF	240792-1	LEVER, DRAG RELEASE	26
REF	5-690504-7	DRAG, STOCK	25
REF	690438-1	GUIDE STRIP (REAR)	24
REF	986950-1	GUIDE, STRIP (FRONT)	23
REF	4-22284-9	WASHER, FLAT, PRECISION	22
REF	453950-1	SPRING, FEED RETURN	21
REF	458949-1	ARM, STRIPPER	20
REF	691667-3	STRIPPER	19
REF	455749-1	HOLDER, TERMINAL	18
REF	455749-1	GUARD, CHIP (REAR)	17
REF	455749-1	GUARD, CHIP (FRONT)	16
REF	455749-1	PLATE, SHEAR (REAR)	15
REF	455749-1	HOLDER, SHEAR (REAR)	14
REF	455749-1	SHEAR, FLOAT (REAR)	13
REF	455749-1	SPRING, SHEAR	12
REF	455749-1	STOP, SHEAR	11
REF	455749-1	HOLDER, SHEAR (FRONT)	10
REF	455749-1	SHEAR, FLOAT (FRONT)	9
REF	455749-1	ANVIL	8
REF	455749-1	SPACER, DEPRESSOR (REAR)	7
REF	455749-1	DEPRESSOR, SHEAR (REAR)	6
REF	455749-1	DEPRESSOR, SHEAR (FRONT)	5
REF	455749-1	SPACER, TUBULAR, INS CRIMPER	4
REF	455749-1	CRIMPER, INSULATION	3
REF	455749-1	SPACER, CRIMPER	2
REF	455749-1	CRIMPER, WIRE	1

CRIMPING DATA				APPLICATOR WILL APPLY	
PAD LTR	CRIMP HEIGHT	WIRE SIZE	WIRE STRIP LENGTH	61604	
A	.073	(2) 16			
B	.061	(2) 18			
C	.054	(2) 20			
D	NOT USED				
CRIMP	SIZE	TYPE	FEED	APPL INST	
WIRE	.110	F			
INSUL	.170	F	.800	A1 8040	
WIRE RANGE	(2) 20 - (2) 16	INSULATION RANGE	(2) 125 MAX.	PRESS NO	565435-5
REMARKS: PRE-FEED AMP-O-LECTRIC					
I.D. PLATE (REF) 461264-1					

REMARKS	NO	REV
APPL USED ON MACHINE PART NO	MACH SERIAL NO	TO APPLY TERMINAL 114-49003
CUSTOMER NAME	APPL SERIAL NO	DISTRIBUTION
ADDRESS	PURCHASE ORDER	ORIGINAL
CITY	ENG APP	CUSTOMER COPY
		FIELD ENG COPY