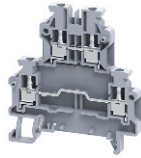
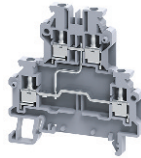


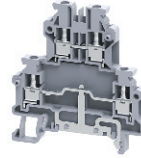
**ODL2.5**



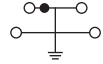
**ODL2.5(I.S)**



**ODLG2.5**



**ODLG2.5(I.S)**



**Dimensions & Weight**

<b>Width</b>	<b>5 mm</b>	<b>5 mm</b>	<b>5 mm</b>	<b>5 mm</b>
<b>Length</b>	62.0 mm	62.0 mm	62.0 mm	62.0 mm
<b>Height w DIN Rail</b>	35 x 7.5 mm 35 x 15 mm	63.0 mm 70.5 mm	63.0 mm 70.5 mm	63.0 mm 70.5 mm
<b>Weight per piece</b>	13.0 g	14.2 g	15.3 g	17.0 g

**Technical Data/Ratings**

<b>Approvals</b>								
<b>Wire Size (solid / stranded)</b>	<b>24-12 AWG</b>	0.2-2.5 mm <sup>2</sup>	<b>24-12 AWG</b>	0.2-2.5 mm <sup>2</sup>	<b>24-12 AWG</b>	0.2-2.5 mm <sup>2</sup>	<b>24-12 AWG</b>	0.2-2.5 mm <sup>2</sup>
<b>Voltage Rating</b>	300 V	800 V AC/DC	300 V	800 V AC/DC	300 V	800 V AC/DC	300 V	800 V AC/DC
<b>Current Rating</b>	25 A	24 A	25 A	24 A	25 A	24 A	-	-
<b>Torque</b>	4.5 lb-in	0.4 Nm	4.5 lb-in	0.4 Nm	4.5 lb-in	0.4 Nm	4.5 lb-in	0.4 Nm
<b>Insulation Material</b>	Polyamide 66		Polyamide 66		Polyamide 66		Polyamide 66	

**Installation Instructions**

<b>Wire Stripping Length</b>	8 mm	8 mm	8 mm	8 mm
<b>Screwdriver</b>	Flat Head 0.6 x 3.5 mm	Flat Head 0.6 x 3.5 mm	Flat Head 0.6 x 3.5 mm	Flat Head 0.6 x 3.5 mm

**Terminal Blocks**

	Cat. No.	Std. Pk.	Cat. No.	Std. Pk.	Cat. No.	Std. Pk.	Cat. No.	Std. Pk.
<b>Grey</b>	<b>ODL2.5</b>	50	<b>ODL2.5(I.S)</b>	50	<b>ODLG2.5</b>	50	<b>ODLG2.5(I.S)</b>	50
<b>Stackable Clip-on</b>	ODL2.5A	50	ODL2.5A(I.S)	50	ODLG2.5A	50	ODLG2.5A(I.S)	50
<b>Red R</b>	ODL2.5/R	50	ODL2.5/R	50	-	-	-	-
<b>Blue BU</b>	ODL2.5/BU	50	ODL2.5/BU	50	-	-	-	-
<b>Black BL</b>	ODL2.5/BL	50	ODL2.5/BL	50	-	-	-	-
<b>Orange O</b>	ODL2.5/O	50	ODL2.5/O	50	-	-	-	-
<b>Green G</b>	ODL2.5/G	50	ODL2.5/G	50	-	-	-	-
<b>Yellow Y</b>	ODL2.5/Y	50	ODL2.5/Y	50	-	-	-	-
<b>White W</b>	ODL2.5/W	50	ODL2.5/W	50	-	-	-	-

**Accessories**

	Cat. No.	Std. Pk.	Cat. No.	Std. Pk.	Cat. No.	Std. Pk.	Cat. No.	Std. Pk.
<b>End Plate</b>	EP0DL2.5	50	EP0DL2.5	50	EP0DL2.5	50	EP0DL2.5	50
<b>DIN Rail</b>	2511120	20	2511120	20	2511120	20	2511120	20
<b>End Stop</b>	CA702	50	CA702	50	CA702	50	CA702	50
<b>Shorting Link/Jumpers</b>	JX2.5/2	100	JX2.5/2	100	JX2.5/2	100	JX2.5/2	100
<b>Marking Tag</b>	MT5	1 Pk. (100 tags)	MT5	1 Pk. (100 tags)	MT5	1 Pk. (100 tags)	MT5	1 Pk. (100 tags)