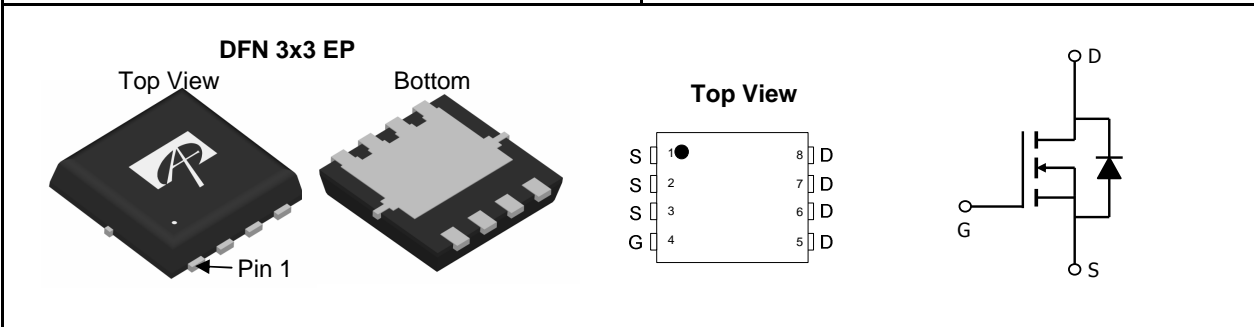




AON7430
30V N-Channel MOSFET

| General Description | Features |
|--|---|
| <p>The AON7430 uses advanced trench technology to provide excellent $R_{DS(ON)}$ with low gate charge. This device is suitable for high side switch in SMPS and general purpose applications.</p> | <p> V_{DS} (V) = 30V I_D = 34A ($V_{GS} = 10V$) $R_{DS(ON)} < 12m\Omega$ ($V_{GS} = 10V$) $R_{DS(ON)} < 16m\Omega$ ($V_{GS} = 4.5V$) </p> <p>100% UIS Tested 100% R_g Tested</p> |



Absolute Maximum Ratings $T_A=25^\circ C$ unless otherwise noted

| Parameter | Symbol | Maximum | Units |
|--|----------------|-------------------|------------|
| Drain-Source Voltage | V_{DS} | 30 | V |
| Gate-Source Voltage | V_{GS} | ± 20 | V |
| Continuous Drain Current | I_D | $T_C=25^\circ C$ | 34 |
| | | $T_C=100^\circ C$ | 21 |
| Pulsed Drain Current ^C | I_{DM} | 80 | A |
| Continuous Drain Current ^A | I_{DSM} | $T_A=25^\circ C$ | 13 |
| | | $T_A=70^\circ C$ | 10.2 |
| Avalanche Current ^C | I_{AR} | 22 | A |
| Repetitive avalanche energy $L=0.1mH$ ^C | E_{AR} | 24 | mJ |
| Power Dissipation ^B | P_D | $T_C=25^\circ C$ | 23 |
| | | $T_C=100^\circ C$ | 9 |
| Power Dissipation ^A | P_{DSM} | $T_A=25^\circ C$ | 3.1 |
| | | $T_A=70^\circ C$ | 2 |
| Junction and Storage Temperature Range | T_J, T_{STG} | -55 to 150 | $^\circ C$ |

Thermal Characteristics

| Parameter | Symbol | Typ | Max | Units |
|--|-----------------|--------------|-----|--------------|
| Maximum Junction-to-Ambient ^A | $R_{\theta JA}$ | $t \leq 10s$ | 30 | 40 |
| | | Steady-State | 60 | 75 |
| Maximum Junction-to-Case ^B | $R_{\theta JC}$ | 4.5 | 5.4 | $^\circ C/W$ |

Electrical Characteristics ($T_J=25^\circ\text{C}$ unless otherwise noted)

| Symbol | Parameter | Conditions | Min | Typ | Max | Units |
|-----------------------------|---------------------------------------|---|-----|----------|----------|------------------|
| STATIC PARAMETERS | | | | | | |
| BV_{DSS} | Drain-Source Breakdown Voltage | $I_D=250\mu\text{A}$, $V_{GS}=0\text{V}$ | 30 | | | V |
| I_{DSS} | Zero Gate Voltage Drain Current | $V_{DS}=30\text{V}$, $V_{GS}=0\text{V}$ $T_J=55^\circ\text{C}$ | | | 1 5 | μA |
| I_{GSS} | Gate-Body leakage current | $V_{DS}=0\text{V}$, $V_{GS}=\pm 20\text{V}$ | | | 100 | nA |
| $V_{GS(th)}$ | Gate Threshold Voltage | $V_{DS}=V_{GS}$, $I_D=250\mu\text{A}$ | 1.5 | 1.9 | 2.5 | V |
| $I_{D(ON)}$ | On state drain current | $V_{GS}=10\text{V}$, $V_{DS}=5\text{V}$ | 80 | | | A |
| $R_{DS(ON)}$ | Static Drain-Source On-Resistance | $V_{GS}=10\text{V}$, $I_D=20\text{A}$ $T_J=125^\circ\text{C}$ | | 10 16 | 12 19 | $\text{m}\Omega$ |
| | | $V_{GS}=4.5\text{V}$, $I_D=20\text{A}$ | | 13 | 16 | $\text{m}\Omega$ |
| g_{FS} | Forward Transconductance | $V_{DS}=5\text{V}$, $I_D=20\text{A}$ | | 45 | | S |
| V_{SD} | Diode Forward Voltage | $I_S=1\text{A}$, $V_{GS}=0\text{V}$ | | 0.7 | 1 | V |
| I_S | Maximum Body-Diode Continuous Current | | | | 25 | A |
| DYNAMIC PARAMETERS | | | | | | |
| C_{iss} | Input Capacitance | $V_{GS}=0\text{V}$, $V_{DS}=15\text{V}$, $f=1\text{MHz}$ | 610 | 760 | 910 | pF |
| C_{oss} | Output Capacitance | | 88 | 125 | 160 | pF |
| C_{rss} | Reverse Transfer Capacitance | | 40 | 70 | 100 | pF |
| R_g | Gate resistance | $V_{GS}=0\text{V}$, $V_{DS}=0\text{V}$, $f=1\text{MHz}$ | 0.8 | 1.6 | 2.4 | Ω |
| SWITCHING PARAMETERS | | | | | | |
| $Q_g(10\text{V})$ | Total Gate Charge | $V_{GS}=10\text{V}$, $V_{DS}=15\text{V}$, $I_D=20\text{A}$ | 11 | 14 | 17 | nC |
| $Q_g(4.5\text{V})$ | Total Gate Charge | | 5 | 6.6 | 8 | nC |
| Q_{gs} | Gate Source Charge | | 1.9 | 2.4 | 2.9 | nC |
| Q_{gd} | Gate Drain Charge | | 1.8 | 3 | 4.2 | nC |
| $t_{D(on)}$ | Turn-On Delay Time | $V_{GS}=10\text{V}$, $V_{DS}=15\text{V}$, $R_L=0.75\Omega$, $R_{GEN}=3\Omega$ | | 4.4 | | ns |
| t_r | Turn-On Rise Time | | | 9 | | ns |
| $t_{D(off)}$ | Turn-Off Delay Time | | | 17 | | ns |
| t_f | Turn-Off Fall Time | | | 6 | | ns |
| t_{rr} | Body Diode Reverse Recovery Time | $I_F=20\text{A}$, $dI/dt=500\text{A}/\mu\text{s}$ | 5.6 | 7 | 8 | ns |
| Q_{rr} | Body Diode Reverse Recovery Charge | $I_F=20\text{A}$, $dI/dt=500\text{A}/\mu\text{s}$ | 6.4 | 8 | 9.6 | nC |

A. The value of $R_{\theta JA}$ is measured with the device mounted on 1 in² FR-4 board with 2oz. Copper, in a still air environment with $T_A=25^\circ\text{C}$. The Power dissipation P_{DSM} is based on $R_{\theta JA}$, $t \leq 10\text{s}$ value and the maximum allowed junction temperature of 150°C . The value in any given application depends on the user's specific board design, and the maximum temperature of 150°C may be used if the PCB allows it.

B. The power dissipation P_D is based on $T_{J(MAX)}=150^\circ\text{C}$, using junction-to-case thermal resistance, and is more useful in setting the upper dissipation limit for cases where additional heatsinking is used.

C. Repetitive rating, pulse width limited by junction temperature $T_{J(MAX)}=150^\circ\text{C}$.

D. The $R_{\theta JA}$ is the sum of the thermal impedance from junction to case $R_{\theta JC}$ and case to ambient.

E. The static characteristics in Figures 1 to 6 are obtained using $<300\mu\text{s}$ pulses, duty cycle 0.5% max.

F. These curves are based on the junction-to-case thermal impedance which is measured with the device mounted to a large heatsink, assuming a maximum junction temperature of $T_{J(MAX)}=150^\circ\text{C}$.

G. The maximum current rating is limited by bond-wires.

H. These tests are performed with the device mounted on 1 in² FR-4 board with 2oz. Copper, in a still air environment with $T_A=25^\circ\text{C}$. The SOA curve provides a single pulse rating.

COMPONENTS IN LIFE SUPPORT DEVICES OR SYSTEMS ARE NOT AUTHORIZED. AOS DOES NOT ASSUME ANY LIABILITY ARISING OUT OF SUCH APPLICATIONS OR USES OF ITS PRODUCTS. AOS RESERVES THE RIGHT TO IMPROVE PRODUCT DESIGN, FUNCTIONS AND RELIABILITY WITHOUT NOTICE.

TYPICAL ELECTRICAL AND THERMAL CHARACTERISTICS

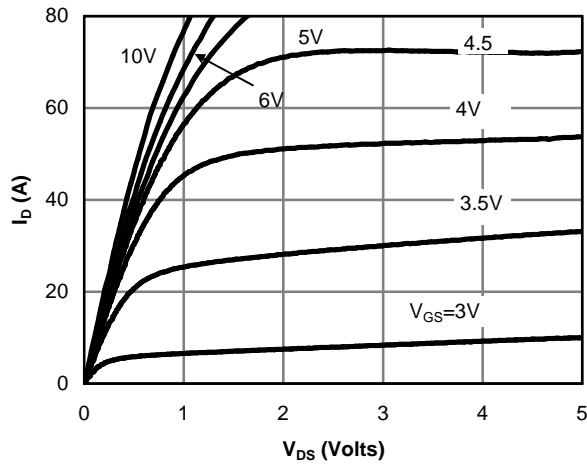


Fig 1: On-Region Characteristics

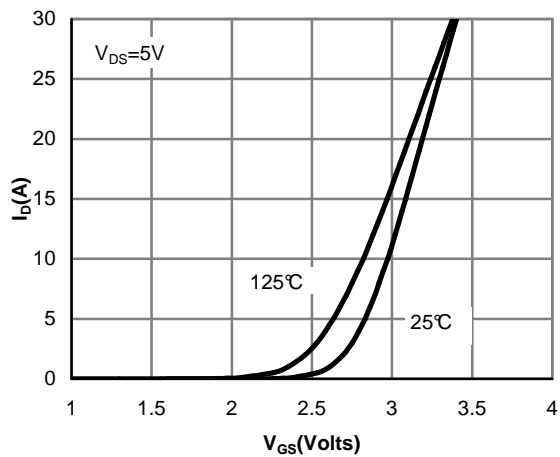


Figure 2: Transfer Characteristics

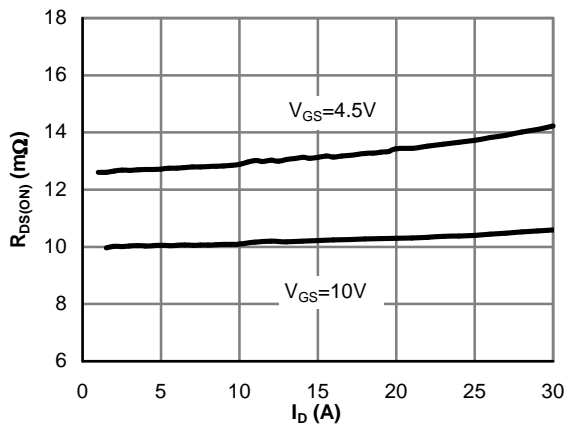


Figure 3: On-Resistance vs. Drain Current and Gate Voltage

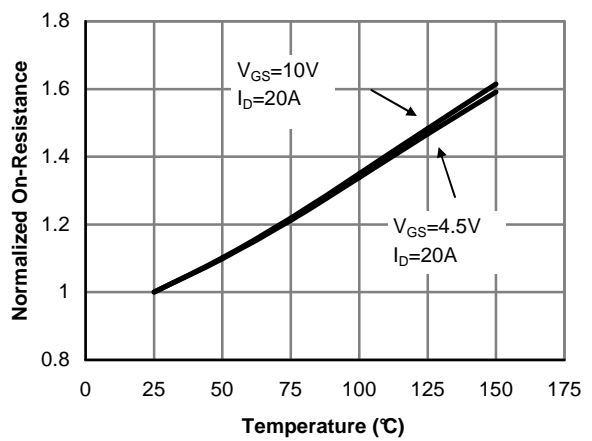


Figure 4: On-Resistance vs. Junction Temperature

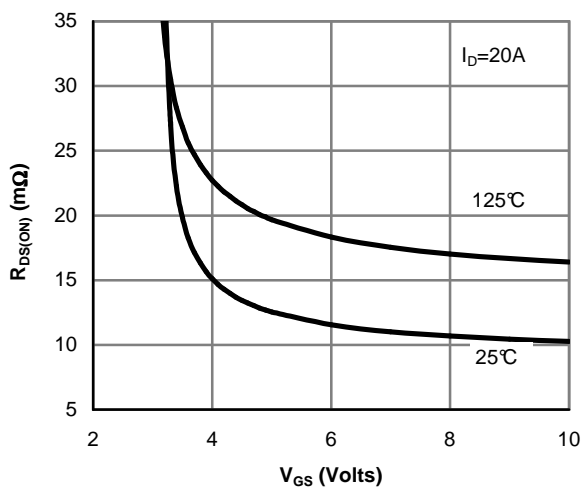


Figure 5: On-Resistance vs. Gate-Source Voltage

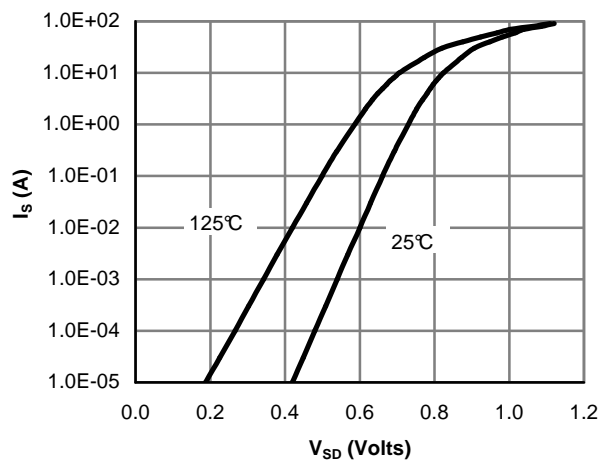


Figure 6: Body-Diode Characteristics

TYPICAL ELECTRICAL AND THERMAL CHARACTERISTICS

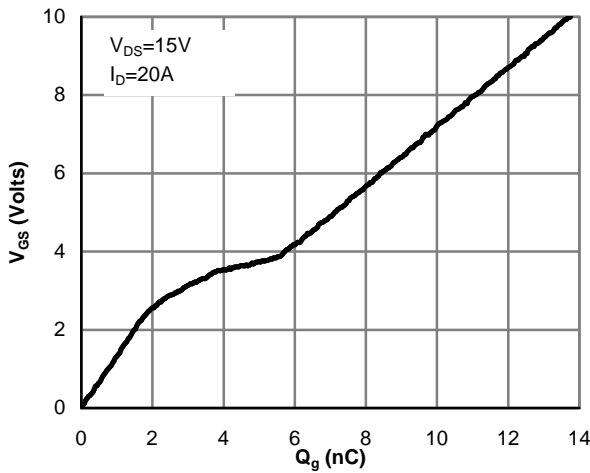


Figure 7: Gate-Charge Characteristics

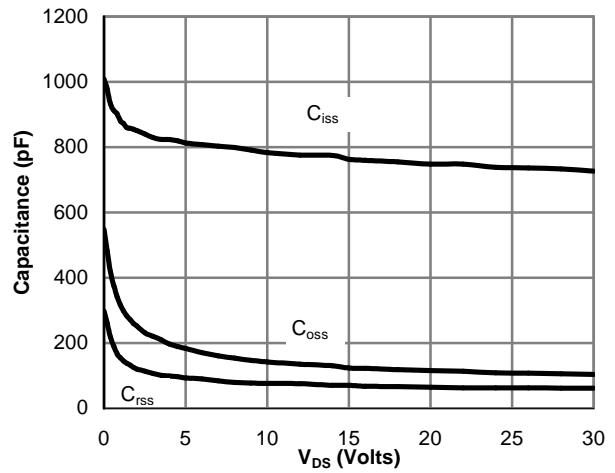


Figure 8: Capacitance Characteristics

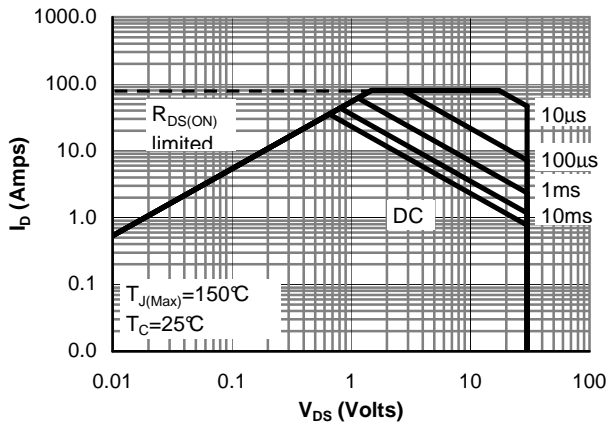


Figure 9: Maximum Forward Biased Safe Operating Area (Note F)

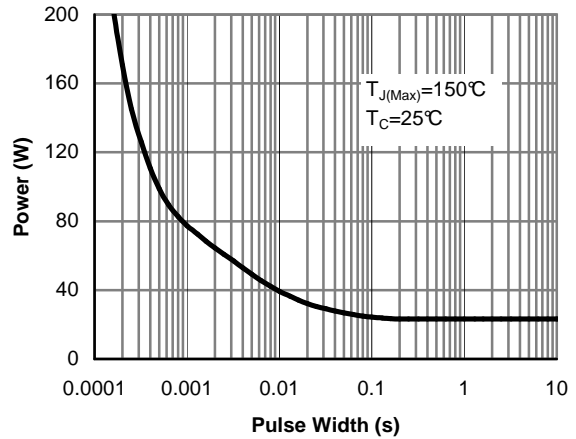


Figure 10: Single Pulse Power Rating Junction-to-Case (Note F)

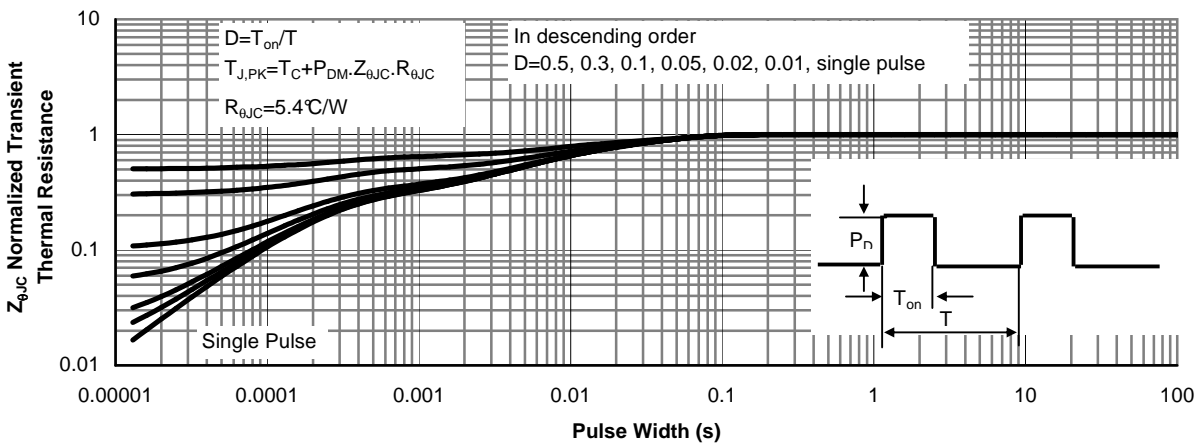


Figure 11: Normalized Maximum Transient Thermal Impedance (Note F)

TYPICAL ELECTRICAL AND THERMAL CHARACTERISTICS

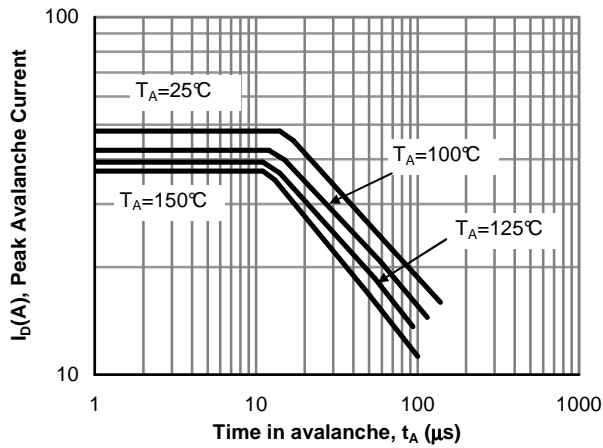


Figure 12: Single Pulse Avalanche capability (Note C)

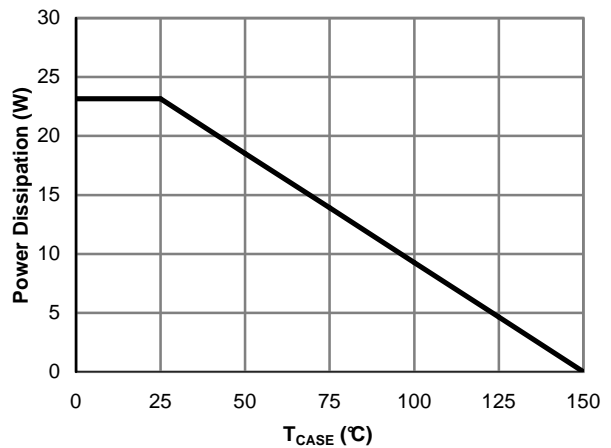


Figure 13: Power De-rating (Note F)

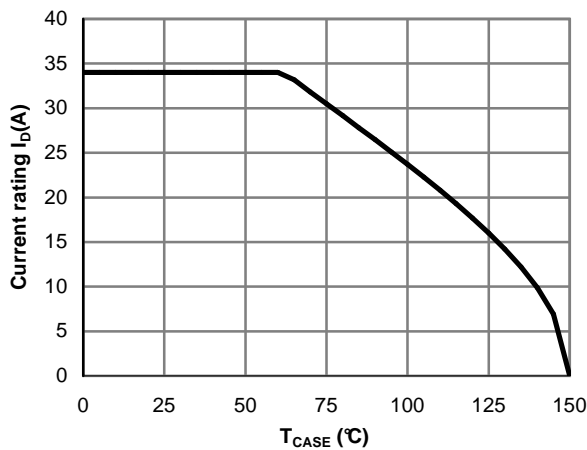


Figure 14: Current De-rating (Note F)

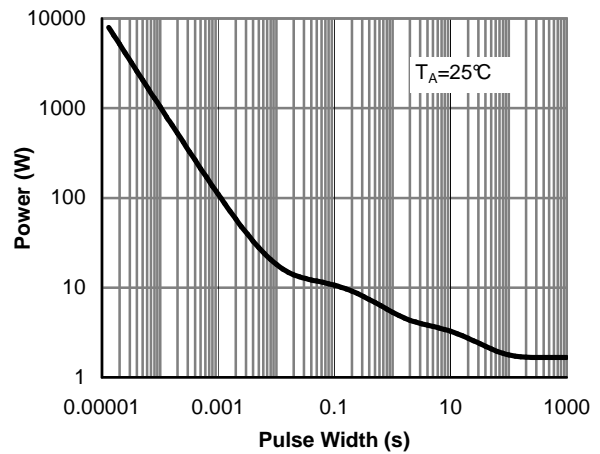


Figure 15: Single Pulse Power Rating Junction-to-Ambient (Note H)

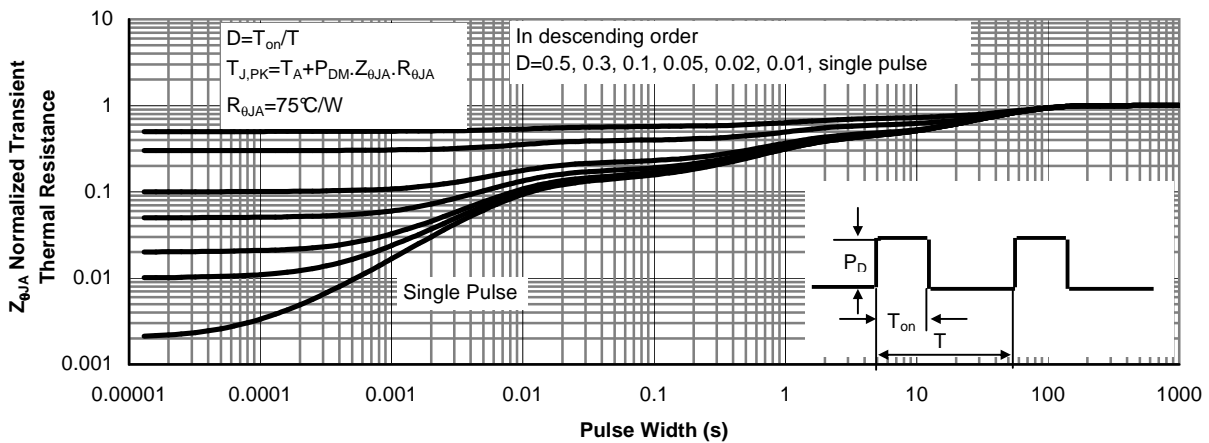
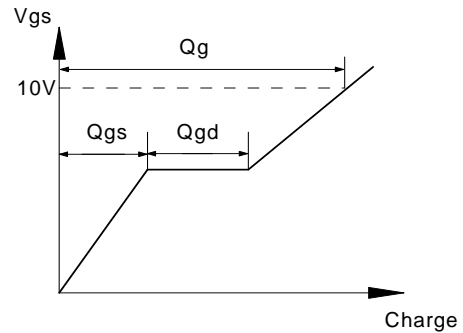
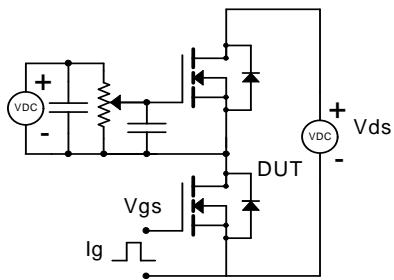
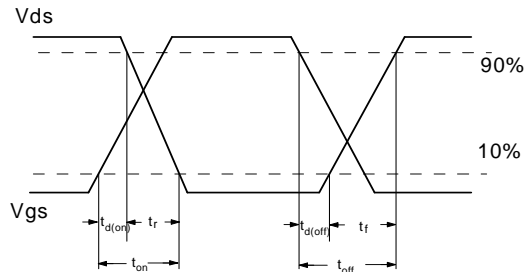
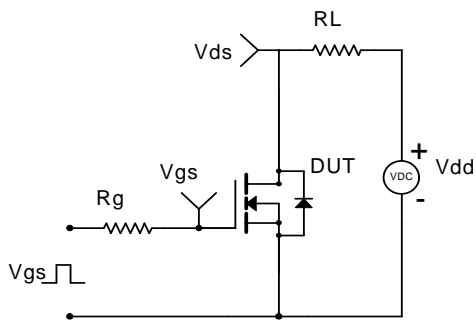


Figure 16: Normalized Maximum Transient Thermal Impedance (Note H)

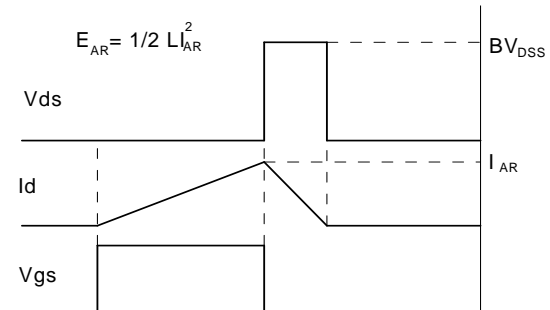
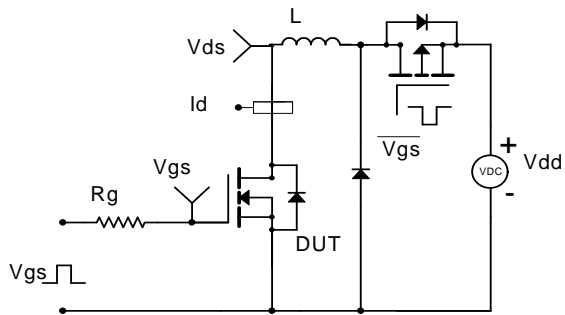
Gate Charge Test Circuit & Waveform



Resistive Switching Test Circuit & Waveforms



Unclamped Inductive Switching (UIS) Test Circuit & Waveforms



Diode Recovery Test Circuit & Waveforms

