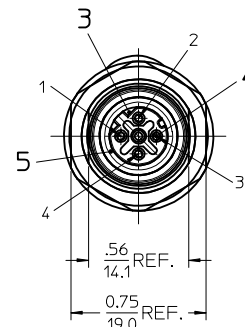
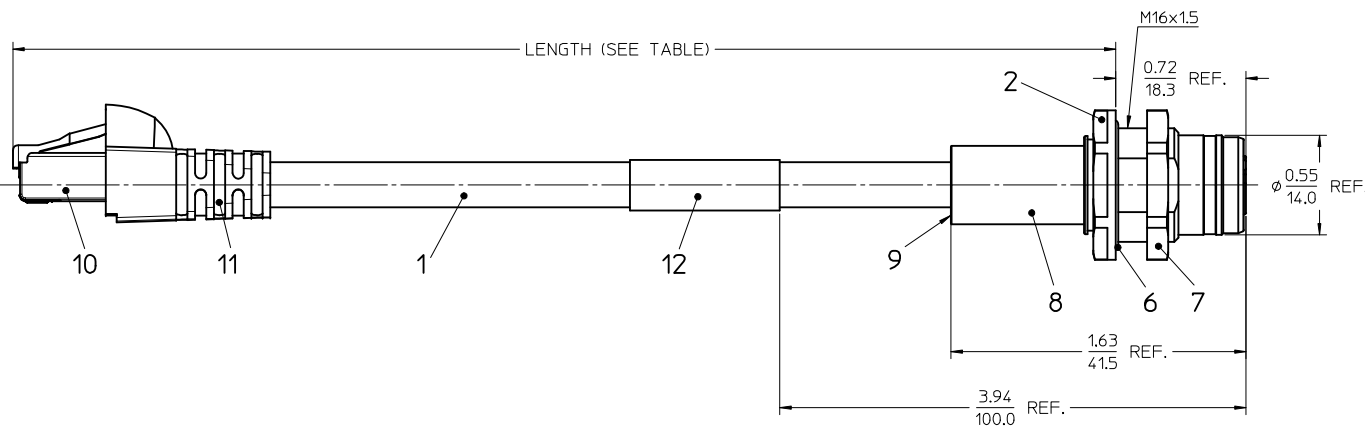
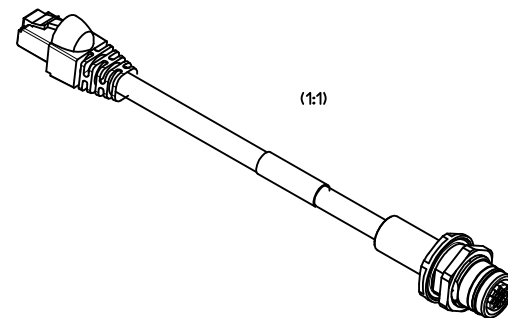
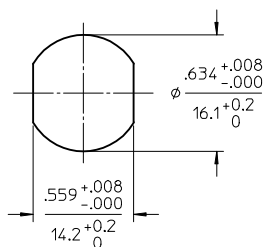


MATERIAL NO.	FINISHED LENGTH
1201090024	23.62 +1.75/0 (0.6m +4.5m/0)

PANEL CUTOUT



- NOTES:
- MATERIAL: SEE TABLE
 - FINISHES: SEE TABLE
 - MATES WITH ULTRA-LOCK MALE CABLE ASSEMBLY
 - ELECTRICAL SPECIFICATIONS:
VOLTAGE RATING: 125V
CURRENT RATING: 1.5 AMPS
 - PROTECTION: IP67
 - ASSEMBLY IS RoHS COMPLIANT

RJ-45 MALE		U12 FEMALE	
1	ORANGE	1	TD+
3	BLUE	2	RD+
2	ORANGE/WHITE	3	TD-
6	BLUE/WHITE	4	RD-

WIRE DIAGRAM

ITEM	QTY.	DESCRIPTION	MATERIAL	FINISH
12	1	WRAP LABEL	PLASTIC FILM	-
11	1	RJ-45 SLEEVE	POLYOLEFIN	BLACK
10	1	RJ-45 PLUG	POLYCARB. SHELL	-
9	1	POTTING MATERIAL	WEVO	-
8	1	SLEEVE	BRASS	NICKEL PLATED
7	1	LOCKNUT M16x1.5	Cu ALLOY	NICKEL PLATED
6	1	O-RING (PANEL SEAL)	EPDM, BLACK	-
5	1	O-RING (MATING INTERFACE)	FPM, RED	-
4	4	CONTACT SOCKET	Cu ALLOY	GOLD PLATED
3	1	INSERT M12 FE 4P DC	NYLON, BLACK	-
2	1	RECEPTACLE SHELL	BRASS	NICKEL PLATED
1	A/R	ETHERNET CABLE CAT5E	PVC JACKET	TEAL
		DESCRIPTION	MATERIAL	FINISH

ENTER DESCRIPTION EC NO: IPG2016-0718 DRAWN:RSCHIEBER 2015/11/09 CHKD:REISSNER 2015/11/25 APPR:RSILLER 2015/12/01	QUALITY SYMBOLS ▽=0 ▽=0	GENERAL TOLERANCES (UNLESS SPECIFIED)		DIMENSION STYLE IN/MM		SCALE 2:1	DESIGN UNITS INCH	THIRD ANGLE PROJECTION	
		4 PLACES ±--- ±---	3 PLACES ±--- ±---	2 PLACES ±--- ±.01	1 PLACE ±0.3 ±---	0 PLACE ±--- ±---	DRAWN BY RSCHIEBER 2015/11/09	DATE 2015/11/09	TITLE CSE RJ-45 U12 4P DC MA PVC FE STR 0.6M M16 DE
		ANGULAR ± 2 °		MATERIAL NO.		DOCUMENT NO.		SHEET NO.	
		DRAFT WHERE APPLICABLE MUST REMAIN WITHIN DIMENSIONS		SEE TABLE		SD-120109-016		1 OF 1	