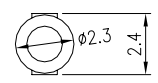
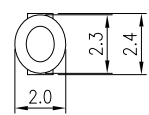


SECTION A-A



SECTION B-B  
SCALE 5 : 1



SECTION C-C  
SCALE 5 : 1

**MATERIAL**  
 INSULATOR: GLASS-REINFORCED THERMOPLASTIC.  
 CONTACT: PHOSPHOR BRONZE.  
 PLATING: MATING AREA - SEL. GOLD OVER NICKEL.  
 SOLDER AREA - TIN/LEAD OVER NICKEL.

**ELECTRICAL**  
 VOLTAGE RATING: 250 VAC RMS.  
 CURRENT RATING: 1 AMP.  
 DIELECTRIC WITHSTANDING VOLTAGE: 500 VAC RMS 60Hz FOR 1 MINUTE.  
 INSULATION RESISTANCE: 1000 MEGOHMS MIN AT 500 VDC.  
 CONTACT RESISTANCE: 30 MILLIOHMS MAX AT 1 AMP DC.

**MECHANICAL**  
 RETENTION FORCE: 460 GRAMS MIN PER CONTACT.  
 INSERTION FORCE: 230 GRAMS MAX PER CONTACT PAIR.  
 WITHDRAWAL FORCE: 15 GRAMS MIN PER CONTACT PAIR.

**ENVIRONMENTAL**  
 TEMPERATURE RANGE: -55°C TO +85°C.

RECOMMENDED PCB LAYOUT (TOP VIEW)

				TOLERANCE		Sullins Electronics Corp San Marcos, CA www.SullinsElectronics.com		TITLE: PCI 120P CONN				
				LINEAR	ANGLES			PART NO. TRWB060DKHN-T578				
D	CHANGED #1 POS. INDICATOR	JFW	12/23/03	X.±0.20	X'.±	APPD:	MAT'L:	DWG NO. P12005004				
C	Hole Dia to 2.44	Nop	Aug-8-01	.XX±0.10	.XX'±	CHKD:	FINISH:		UNITS	SCALE	SHEET	REV
REV	ECN NO.	NAME	DATE	.XXX±0.05	.XXX'±	DRWN: Jason Deng	Q'TY:		MM	2 : 1	1 OF 1	D