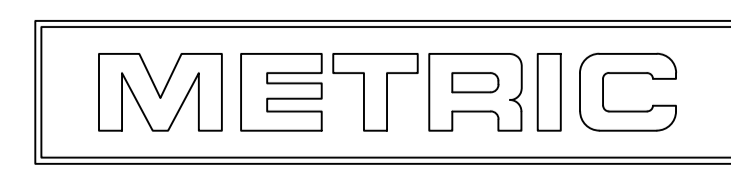
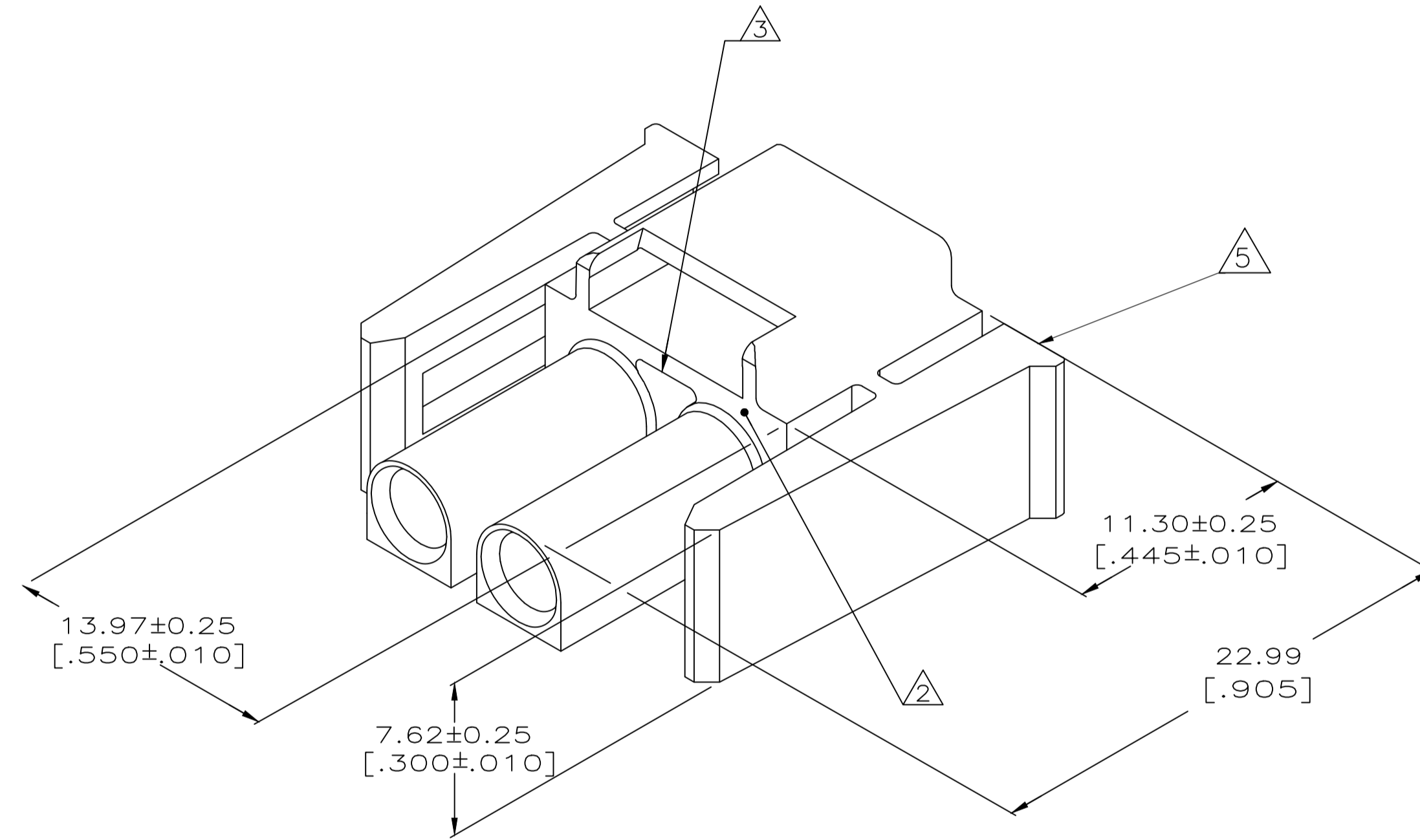


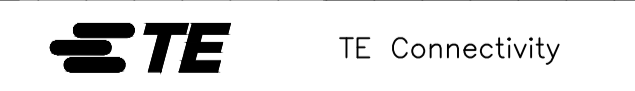
REVISIONS					
P	LTR	DESCRIPTION	DATE	OWN	APVD
E2		REV. ECO 17-011267	13SEP2017	HC	KR

- MUST BE ASSEMBLED WITH PLUG REAR P/N 770032-1 BEFORE MATING. KIT P/N IS 770017-1.
- AMP LOGO LOCATED THIS SURFACE.
- NEW MOLD CONSTRUCTION PROVIDES MATERIAL REDUCTION CORING AT BASE OF SILOS WITH NO CORING AS OPTIONAL.
- DIMENSIONS SHOWN REPRESENT PRODUCT IN DRY, AS MOLDED CONDITION. ADDITIONAL 2% GROWTH DUE TO SUBSEQUENT MOISTURE ABSORPTION MAY OCCUR AND SHOULD BE ACCOUNTED FOR
- CSA CERTIFICATION LOGO LOCATED APPROXIMATELY AS SHOWN



770031-1  
PART NUMBER

THIS DRAWING IS A CONTROLLED DOCUMENT.		DWN K. SALMON 1-15-92	CHK R. SWING 1-15-92	APVD --	NAME
DIMENSIONS:		TOLERANCES UNLESS OTHERWISE SPECIFIED:		PRODUCT SPEC	
INCHES		0 PLC ± --		APPLICATION SPEC	
1 PLC ± --		2 PLC ± --		WEIGHT	
2 PLC ± --		3 PLC ± 0.13 [.005]		0	
3 PLC ± --		4 PLC ± --		A1 00779 C=770031	
4 PLC ± --		ANGLES ± --		SIZE CAGE CODE DRAWING NO	
MATERIAL		FINISH		RESTRICTED TO	
NYLON,UL94V-0,		-		--	
CUSTOMER DRAWING		SCALE		SHEET	
		5:1		1 OF 1	
				REV E2	



TE Connectivity  
PLUG FRONT, 2 CIRCUIT,  
UNIVERSAL MATE-N-LOK