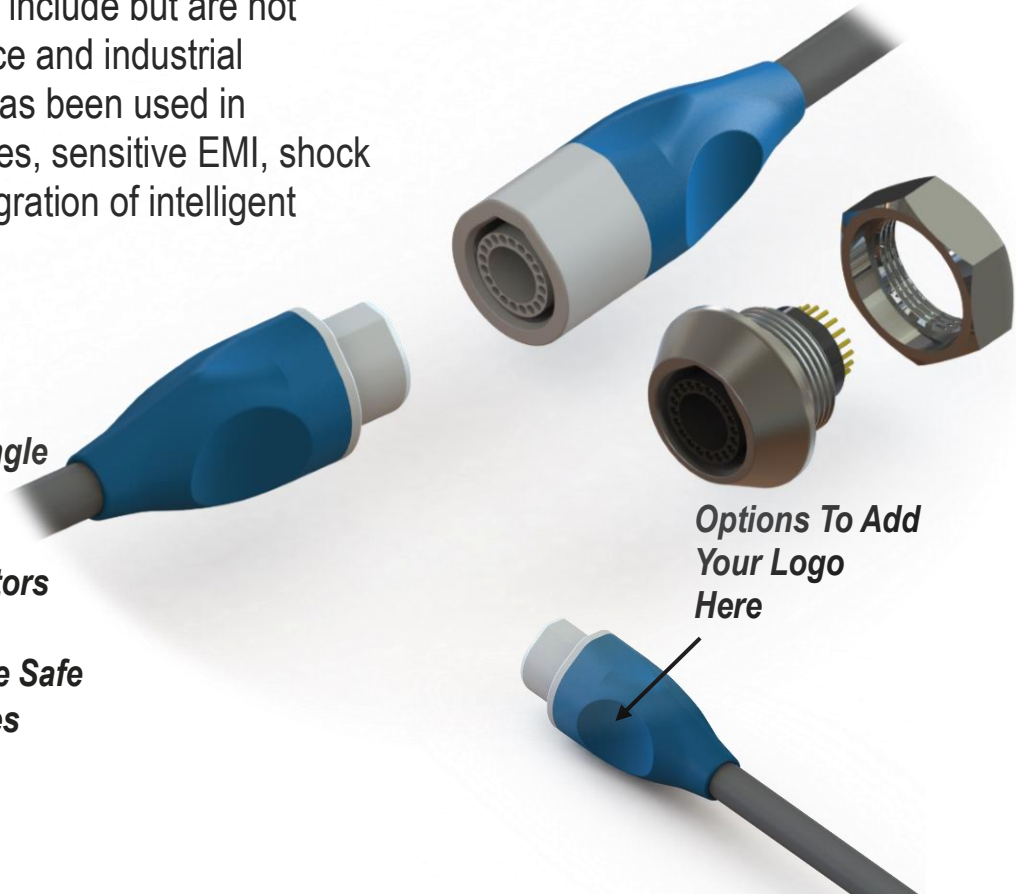


Onanon's *MagConnect™ | Hero* is performance engineered to be the most intuitive interconnect in the world. Its unique magnetic safety latch feature is ideal for medical applications, where time, precision, and quality are most critical. Additional suitable markets include but are not limited to the automotive, aerospace and industrial industries. MagConnect™ series has been used in applications with low & high voltages, sensitive EMI, shock & vibration environments, and integration of intelligent electronics.

- **2 to 20 pin capacity**
- **Intuitive and self-mating**
- **Magnetic safety de-latching**
- **Customizable for reusable or single use applications**
- **Easily add components such as EEPROMs, resistors and capacitors**
- **EMI/RFI Safe**
- **Low (<12v) & High (>5000v) Voltage Safe**
- **Rugged use in outdoor wearables**
- **VF/HF/RF Safe**



Specifications

Mechanical

Mating Type: Magnetic
Mating Cycles: 10k Min
Mating Forces:
 Insertion: Magnetic
 Removal: 3.5 lbf Min

Electrical

Operating Voltage:
 1kVAC and 1.5kVDC
Operating Current: 3A

Environmental

Sterilizable: Gamma, EtO
Chemical Resistance: Common cleaning solvents
Finger Safety: IEC 60601-1
Storage & Operating Temp:
 0-150°C

Compatibility

Contacts: 20 pins
Plug Cable Assembly
Accepted Wire Gauges: 26-50 AWG
Cable Jacket OD: 0.286" Max
Contact Termination: Solder
In-Line Receptacle Cable Assembly
Accepted Wire Gauges: 26-50 AWG
Cable Jacket OD: 0.286" Max
Contact Termination: Solder

MagConnect has been tested and in production for numerous applications, such as High-Voltage >5000VAC, Low Voltage <12v, HF/RF, RFA, EHF, EMI, RFI, RFID, Wi-Fi, VF



Self-Mating

Intuitive tear drop shape allows for easy alignment and mating



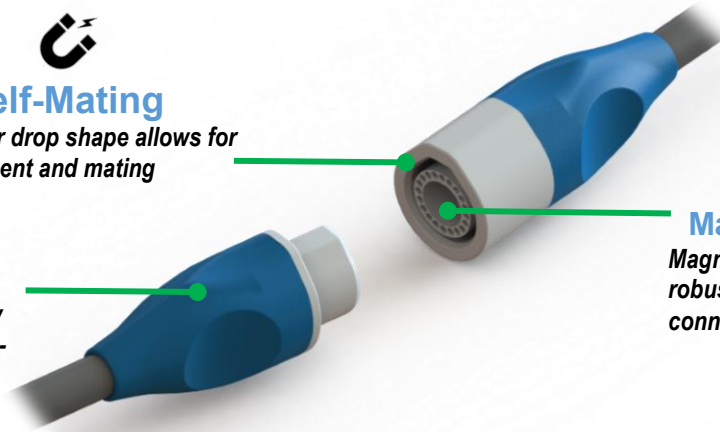
Sterilizable

Chemical-resistant materials are easy to clean and withstand repeated wipe-downs using common hospital disinfectants



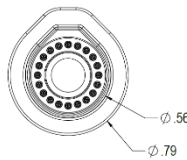
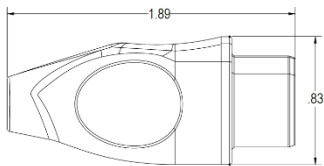
Magnetic Safety Latch

Magnetic interlock ensures a robust, safe, and reliable connection

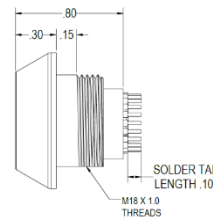
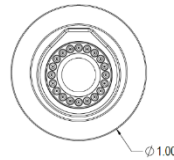


Dimensions

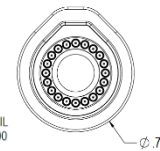
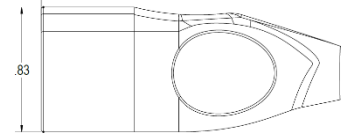
Plug PN: 193-A001



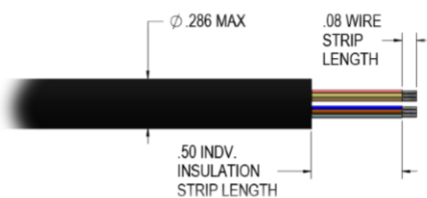
Panel Mount Receptacle PN: 193-A002



Inline Receptacle PN: 193-A003

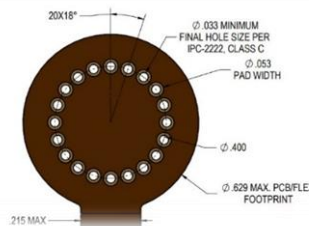


Recommended Cable Specifications

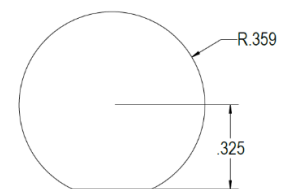


Units are in inches
Contact Sales for unspecified dimensions

Recommended PCB or Flex Dimensions



Recommended Panel Cutout



Materials & Assembly

Plug Assembly

Plug Housing: Thermoplastic Polyester
Retaining Cap: Thermoplastic Polyester
Pins: Gold Plated Brass Alloy
Magnet: Nickel Plated Neodymium
Slip-On Boot: Thermoplastic Polyurethane

Required Assembly: Assemble connector body after terminating wires

Inline Receptacle Assembly

Plug Housing: Thermoplastic Polyester
Retaining Cap: Thermoplastic Polyester
Pins: Gold Plated Brass Alloy
Magnet: Nickel Plated Neodymium
Slip-On Boot: Thermoplastic Polyurethane

Required Assembly: Assemble connector body after terminating wires

Panel Mount Receptacle

Insulator Insert: Thermoplastic Polyester
Metal Shell: Chromium Plated Brass Alloy
Pins: Gold Plated Brass Alloy
Magnet: Nickel Plated Neodymium

Required Assembly: Solder a PCB or flex assembly