

RPM6400

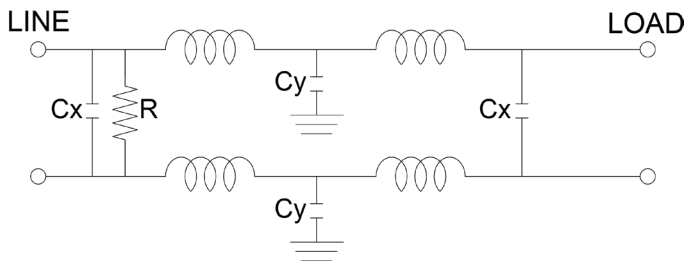
MIL/COTS **DC** EMI POWER LINE FILTER 10GHZ -MIL STD 461/DO-160

FEATURES

- » Rated currents include **5A, 10A, 20A, 25A, and 50A**
- » Dual Stage Line Filter
- » Available with **S** (studs)
- » Agency Approved to UL1283 / 60929, CSA C22.2, EN 60939
- » Y-cap value can be adjusted to fit specification



ELECTRICAL SCHEMATIC



SPECIFICATIONS

OPERATING FREQUENCY	DC
MAX. OPERATING VOLTAGE	400 VDC +10%
AMBIENT TEMPERATURE	-40 TO 70°C
CLIMATIC CATEGORY	25/100/21
TERMINALS (-T)	STUDS: 5-50A (M5)

TYP. WEIGHT, LBS (KG)	2.0 - 5.0 (0.9 - 2.3)
-----------------------	-----------------------

HIPOT RATINGS

LINE TO GROUND	1800 VDC
----------------	----------

HOW TO ORDER

RPM6400 - Y - Z

- Z = TERMINAL (-T)
- X = RATED CURRENT
- RP6400 = FILTER SERIES

NOTE: USE ANY COMBINATION OF -X (AMPS) WITH ANY -Y RATINGS
E.G. **RPM6400-10-S** (10AMPS)

For **X** and **Y** options see product specification table.

TYPICAL APPLICATIONS

- ✓ Mil-461/DO-160 (Grounded and Non-Grounded Returns)

NOTE:

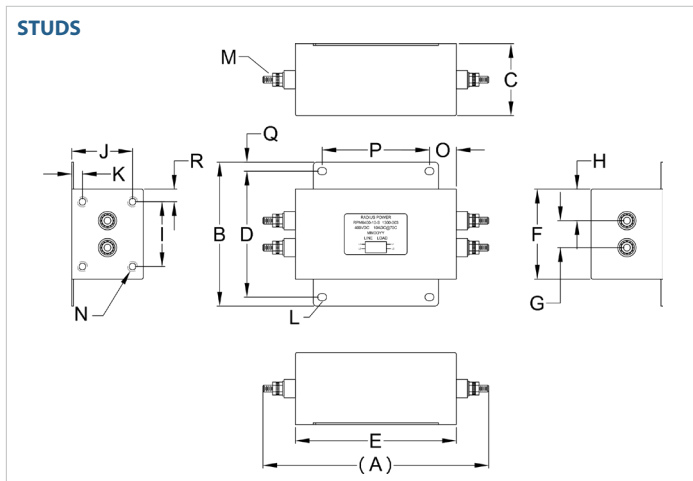
- ✓ Call for other termination types (e.g. Circular Mil-Connectors, etc.)

RPM6400

MIL/COTS **DC** EMI POWER LINE FILTER 10GHZ -MIL STD 461/DO-160

MODEL NO.	RATED CURRENT, A @ 40° C	TERMINAL OPTIONS			MOUNTING FLANGE	MAX. DIMENSIONS" (MM)		
		(W) INPUT/OUTPUT	(S) INPUT/OUTPUT	(C) INPUT/OUTPUT		WIDTH	(LENGTH)	HEIGHT
RPM6400-5-S	5		✓		✓	4.00"(102)	6.31"(160)	2.00"(51)
RPM6400-10-S	10		✓		✓	4.00"(102)	6.31"(160)	2.00"(51)
RPM6400-20-S	20		✓		✓	5.00"(127)	9.31"(237)	1.85"(47)
RPM6400-25-S	25		✓		✓	5.00"(127)	9.31"(237)	1.85"(47)
RPM6400-50-S	50		✓		✓	5.00"(127)	10.92"(277)	1.85"(47)

RPM6400 MECHANICAL OUTLINES (MM)



SERIES	(A)	B	C	D	E	F	G	H	I	J	K	L	M	N	O	P	Q	R
STUDS (5/10A)	6.31" (160)	4.00" (102)	2.00" (51)	3.50" (89)	4.50" (114)	2.50" (64)	0.75" (19)	0.88" (22)	1.80" (46)	1.70" (43)	0.30" (8)	Ø 0.25"x0.20", 4x (Ø 6.4x5.1, 4x)	STUD, M5, 4x	INSERT, 6-32, 4x	0.75" (19)	3.00" (76)	0.25" (6)	0.35" (9)
STUDS (20/25A)	9.31" (237)	5.00" (127)	1.85" (47)	4.50" (114)	7.50" (191)	4.00" (102)	1.40" (36)	1.30" (33)	2.70" (69)	1.58" (40)	0.93" (24)	Ø 0.29"x0.20", 4x (Ø 7.6x5.1, 4x)	STUD, 10-32, 4x	INSERT, 6-32, 4x	1.25" (32)	5.00" (127)	0.25" (6)	N/A
STUDS (50A)	10.92" (277)	5.00" (127)	1.85" (47)	4.50" (114)	9.50" (241)	4.00" (102)	1.75" (44)	1.13" (29)	3.31" (84)	1.58" (40)	0.93" (24)	Ø 0.29"x0.20", 4x (Ø 7.6x5.1, 4x)	STUD, M5, 4x	INSERT, 6-32, 4x	2.25" (57)	5.00" (127)	0.25" (6)	0.34" (9)

TYPICAL TOLERANCE: +/-0.02" (0.50MM)

RPM6400

MIL/COTS **DC** EMI POWER LINE FILTER 10GHZ -MIL STD 461/DO-160

TYPICAL INSERTION LOSS, dB (50/50 Ohm)

Amps	Freq (MHz)	0.15	0.5	1.0	10	30
5	CM (dB)	50	60	60	70	70
	DM (dB)	34	45	65	65	60
10	CM (dB)	50	60	60	70	70
	DM (dB)	34	45	65	65	60
20	CM (dB)	50	60	60	70	70
	DM (dB)	34	45	65	65	60
25	CM (dB)	50	60	60	70	70
	DM (dB)	34	45	65	65	60
50	CM (dB)	50	60	60	70	70
	DM (dB)	34	45	65	65	60