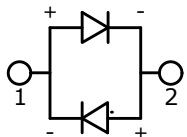
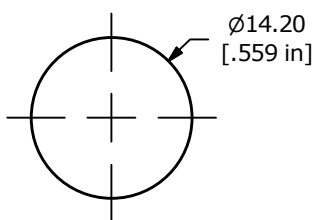
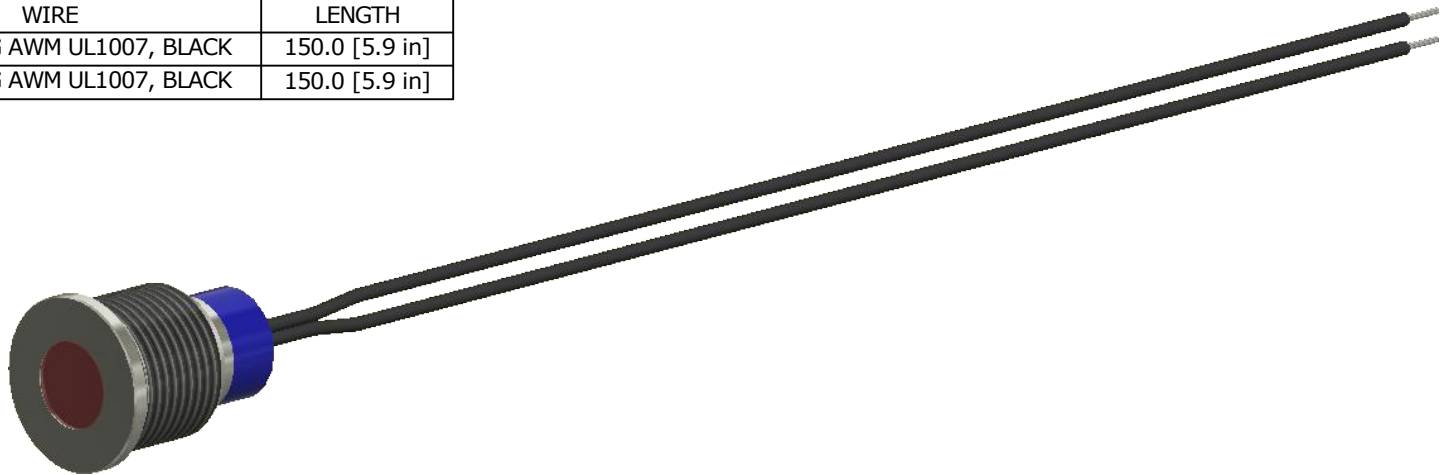


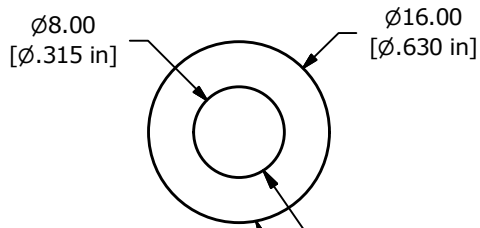
ADAPTER	WIRE	LENGTH
SW1-1	WIRE, 24 AWG AWM UL1007, BLACK	150.0 [5.9 in]
SW1-2	WIRE, 24 AWG AWM UL1007, BLACK	150.0 [5.9 in]



LED SCHEMATIC

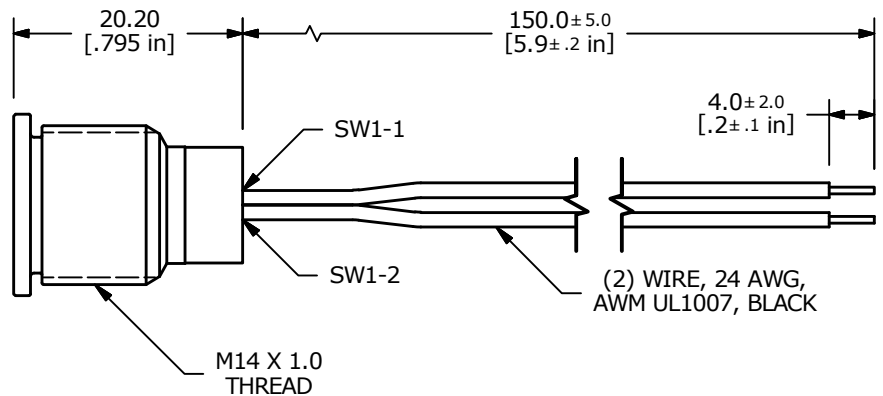


MAX. PANEL THICKNESS 6.0 [.24 in]



▲ ILLUMINATION COLOR: RED

▲ BODY FINISH: STAINLESS STEEL



NOTE:

1. ALL DIMENSIONS IN MM [INCH]
2. GENERAL TOLERANCE: X.X = ±0.4  
X.XX = ±0.25
3. TERMINAL NUMBERS FOR REF ONLY
4. OPERATING TEMP: -25°C to 55°C
5. CURRENT RATING: 2mA-20mA
- ▲ 6. LAMP VOLTAGE: 110V
7. IP RATING: IP67
8. ▲ DENOTES CRITICAL PARAMETER.
9. HARDWARE SUPPLIED: O-RING AND HEXNUT



A	24037	NEW RELEASE	9/12/19	MJR
REV	PCR NO	DESCRIPTION	DATE	BY

E-SWITCH®				
TITLE PVL14FWS16				
SCALE	DATE	DR	DWG	REV
3:2	9/12/2019	MJR	52-PVL14FWS16	A