

SPICE-Equivalent circuit model library

Table 1. Equivalent circuit data

Part Number	L (μ H)	F _{res} (MHz)	C1 (pF)	R1 (Ω)	R2 Nominal DCR of winding (Ω)
HCMA0703-R15-R	0.15	158.7	6.70	3549.03	0.0019
HCMA0703-R22-R	0.22	129.6	6.86	3920.63	0.0025
HCMA0703-R47-R	0.47	86.7	7.18	4776.07	0.004
HCMA0703-R68-R	0.68	71.3	7.34	5257.48	0.005
HCMA0703-R82-R	0.82	64.5	7.42	5519.72	0.0067
HCMA0703-1R0-R	1	58.1	7.51	5812.00	0.009
HCMA0703-1R5-R	1.5	46.8	7.69	6458.17	0.014
HCMA0703-2R2-R	2.2	38.2	7.87	7134.37	0.018
HCMA0703-3R3-R	3.3	30.8	8.07	7927.55	0.028
HCMA0703-4R7-R	4.7	25.6	8.24	8691.03	0.037
HCMA0703-6R8-R	6.8	21.0	8.42	9567.05	0.054
HCMA0703-8R2-R	8.2	19.0	8.52	10044.24	0.064
HCMA0703-100-R	10	17.1	8.62	10576.10	0.071
HCMA0703-220-R	22	11.3	9.04	12982.42	0.135
HCMA0703-330-R	33	9.1	9.26	14425.78	0.22

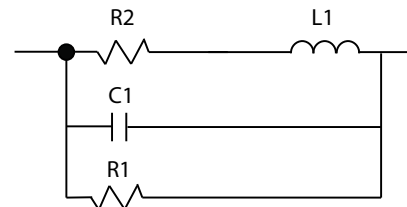


Figure 1. Equivalent circuit

Disclaimer

The data provided is for reference and is intended for evaluation purposes only. Users should verify all intended results in the end application.

Eaton
Electronics Division
 1000 Eaton Boulevard
 Cleveland, OH 44122
 United States
www.eaton.com/electronics

© 2018 Eaton
 All Rights Reserved
 Printed in USA
 Publication No. HCMA0703 Spice
 April 2018