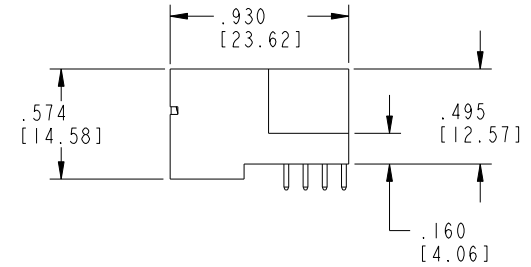
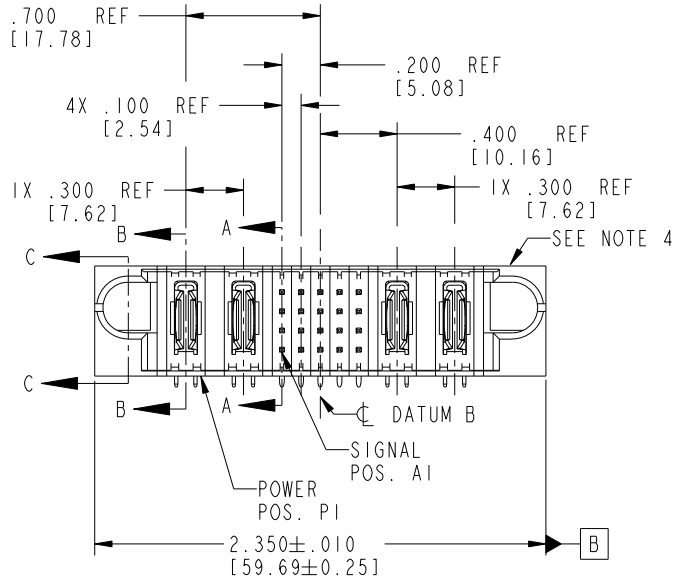


Tous droits strictement réservés. Reproduction ou communication a des tiers interdite sous quelque forme que ce soit sans autorisation écrite du propriétaire. Propriété de c FCI. Droits de reproduction FCI.

All rights strictly reserved. Reproduction or issue to third parties in any form whatever is not permitted without written authority from the proprietor. Property of FCI. Copyright FCI.



PRODUCT NO.	ROWS	POWER		SIGNAL					POWER		E2	
		E1	P1	P2	1	2	3	4	5	P3		P4
51874-001-- NOTE ③	D C B A		PA	PA	UUUUU TTTTT SSSSS RRRRR					PA	PA	



CODE	DIM "M" MATING LENGTH	CONTACT TYPE
F	.220 [5.59]	SIGNAL
R	.270 [6.86]	SIGNAL
S	.270 [6.86]	SIGNAL
T	.270 [6.86]	SIGNAL
U	.270 [6.86]	SIGNAL
PA	N/A [N/A]	POWER

mat'l code				SEE NOTE 2		tolerances unless otherwise specified		CUSTOMER		FCI	
ltr	ecn no.	dr	date	linear	.XX±.01/0.X±0.3	projection		COPY		www.fciconnect.com	
A	V10809	EKK	10-10-00		.XX±.005/0.XX±0.13	⊕		title		2P + 20S + 2P	
B	V20776	JWS	05-21-02	angles	.XXX±.0020/0.XXX±0.051	0° ± 2°		RIGHT ANGLE SOLDER HEADER		product family	
C	DG05-0064	SW	04/05/05	dr		INCH/MM		PwrBlade		code	
D	DG06-0005	JMG	01/05/06	engr	J. SHAFER 05-21-02	1:1		size		213	
E	DG08-0272	WD	09/28/08	chr	M. MOSTOLLER 05-21-02			dwg no		sheet	
sheet index		revision sheet		E	E	E	E	A		51874	
1		2		3	4					1 of 4	

Pro/E

PDM: Rev: E

STATUS: Released

Printed: Dec 20, 2010

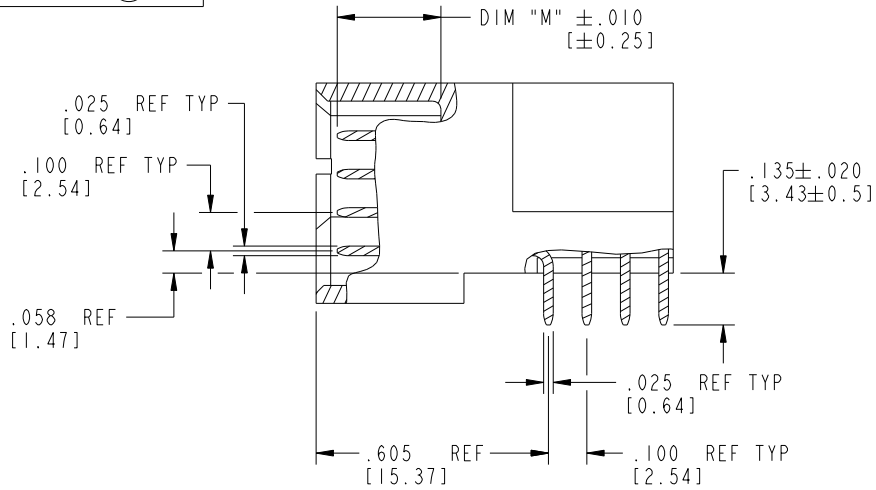
cage code 28556

Tous droits strictement réservés. Reproduction ou communication a des tiers interdite sous quelque forme que ce soit sans autorisation écrite du propriétaire. Propriété de c FCI. Droits de reproduction FCI.

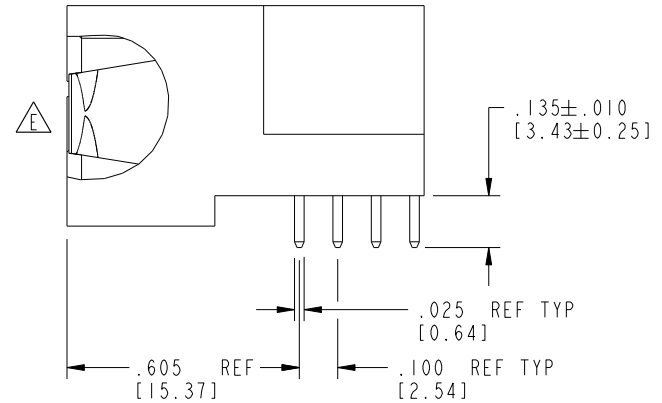
All rights strictly reserved. Reproduction or issue to third parties in any form whatever is not permitted without written authority from the proprietor. Property of FCI. Copyright FCI.



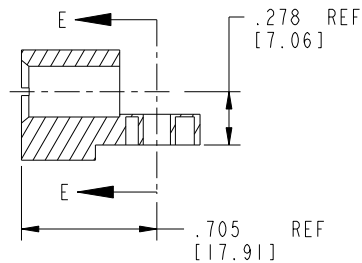
PRODUCT NUMBER  
51874-001--  
NOTE ③



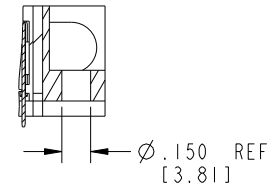
BROKEN-OUT SECTION A-A  
SCALE 2:1



BROKEN-OUT SECTION B-B  
SCALE 2:1



SECTION C-C



PARTIAL SECTION E-E

mat'l code				SEE NOTE 2		tolerances unless otherwise specified		CUSTOMER		FCI	
ltr	ecn no.	dr	date	linear	.XX±.01/0.X±0.3	projection	COPY		www.fciconnect.com		
E					.XXX±.005/0.XX±0.13		title		2P + 20S + 2P		
				angles	.XXX±.0020/0.XXX±0.051		RIGHT ANGLE SOLDER HEADER				
				dr	J. SHAFFER 05-21-02		product family		PwrBlade		
				engr	M. MOSTOLLER 05-21-02		size		213		
				chr	M. MOSTOLLER 05-21-02		scale		A 51874		
				appd	M. MOSTOLLER 05-21-02		sheet		2 of 4		
sheet index		revision sheet									

Pro/E

PDM: Rev: E

STATUS: Released

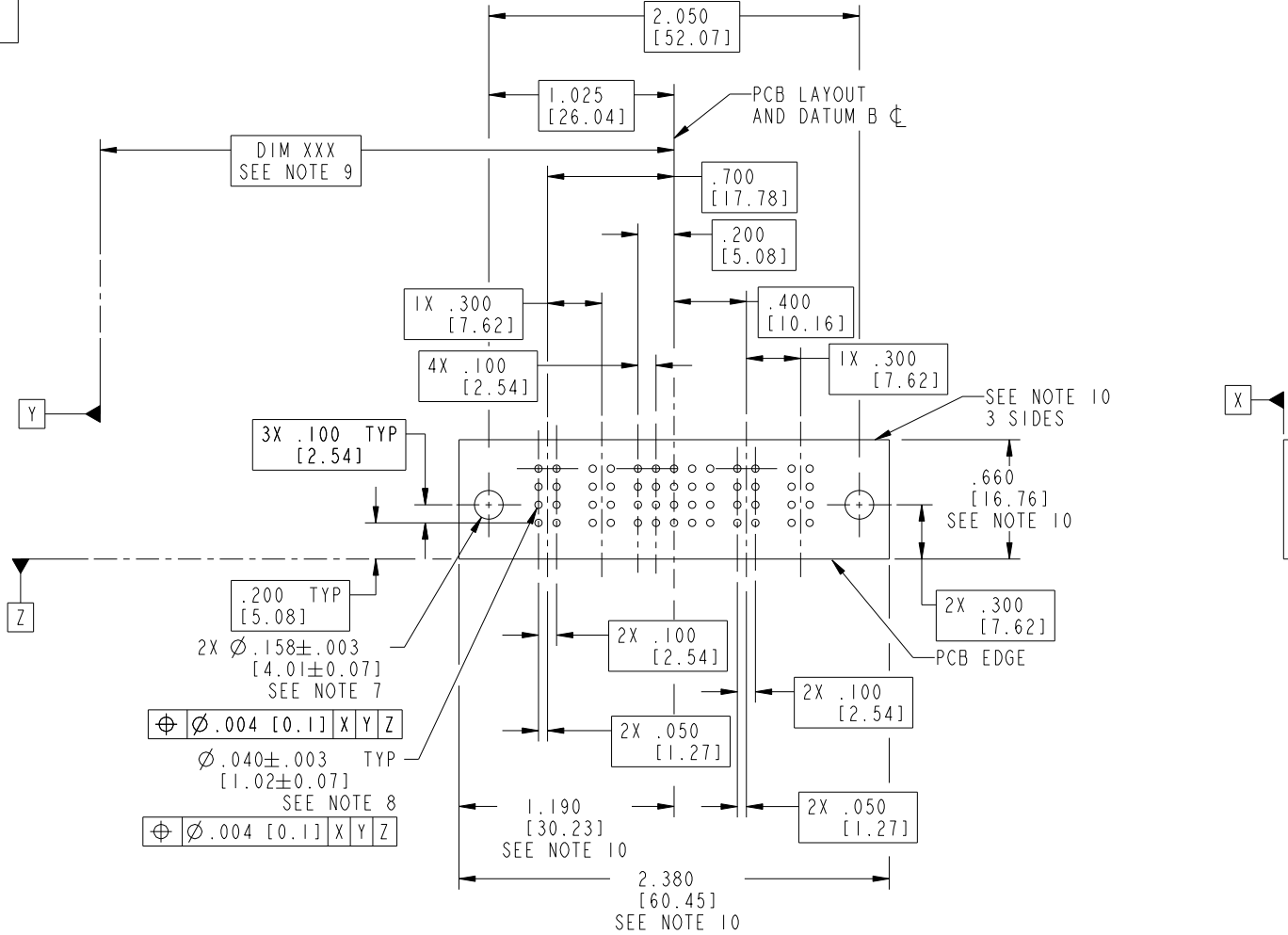
Printed: Dec 20, 2010

Tous droits strictement réservés. Reproduction ou communication a des tiers interdite sous quelque forme que ce soit sans autorisation écrite du propriétaire. Propriété de c FCI. Droits de reproduction FCI.

All rights strictly reserved. Reproduction or issue to third parties in any form whatever is not permitted without written authority from the proprietor. Property of FCI. Copyright FCI.



PRODUCT NUMBER  
51874-001--  
NOTE ③



RECOMMENDED PCB LAYOUT

mat'l code		SEE NOTE 2		tolerances unless otherwise specified		CUSTOMER		 www.fciconnect.com	
lfr	ecn no.	dr	date	linear	.XX±.01/0.X±0.3	projection	title 2P + 20S + 2P		
E				angles	.XXX±.005/0.XX±0.13		RIGHT ANGLE SOLDER HEADER		
					.XXX±.0020/0.XXX±0.051	INCH/MM	product family PwrBlade		code 213
				dr	J. SHAFFER 05-21-02	scale	size A	dwg no 51874	sheet 3 of 4
				enrg	M. MOSTOLLER 05-21-02	1:1			
				chr	M. MOSTOLLER 05-21-02				
				appd	M. MOSTOLLER 05-21-02				
sheet index	revision sheet								

cage code 22526

Pro/E

PDM: Rev: E

STATUS: Released

Printed: Dec 20, 2010

Tous droits strictement réservés. Reproduction ou communication a des tiers interdite sous quelque forme que ce soit sans autorisation écrite du propriétaire. Propriété de c FCI. Droits de reproduction FCI.



All rights strictly reserved. Reproduction or issue to third parties in any form whatever is not permitted without written authority from the proprietor. Property of FCI. Copyright FCI.

1 | 2

3 |

4

PRODUCT NUMBER  
51874-001--  
NOTE ③

NOTES:

1. DIMENSIONS AND TOLERANCES ARE IN ACCORDANCE WITH ASME Y14.5M, 1994 UNLESS OTHERWISE SPECIFIED.

CONNECTOR NOTES:

② HOUSING MATERIAL: UL 94 V-0 GLASS FILLED HIGH-TEMP THERMOPLASTIC  
POWER CONTACT MATERIAL: COPPER ALLOY  
SIGNAL PIN MATERIAL: COPPER ALLOY

⚠ 3. SEE ITEM 1 & 2 IN PRINT 10064183 FOR PLATING SPEC OF 51874-001 AND 51874-001LF RESPECTIVELY.

④ MANUFACTURER'S NAME, P/N, AND DATE CODE TO APPEAR ON THIS SURFACE.

5. PRODUCT SPECIFICATION GS-12-149.  
APPLICATION SPECIFICATION BUS-20-067.

PCB NOTES:

6. ALL HOLE DIAMETERS ARE FINISHED HOLE SIZE.  
7. MOUNTING HOLES, WHERE APPLICABLE, ARE UNPLATED.

⑧  $\varnothing .0453 \pm 0.0010$  [1.151 ± 0.025] DRILLED HOLES PLATED WITH  
.0003 [0.008] MIN SnPb OVER .001 [0.03]  
TO .003 [0.08] Cu PLATING TO ACHIEVE  
 $\varnothing .040 \pm .003$  [1.02 ± .07] HOLE.

⑨ "DIM XXX" TO BE DETERMINED BY THE CUSTOMER.

⑩ CONNECTOR KEEP-OUT ZONE.

11. A ⚠ SYMBOL WILL BE NEXT TO ANY DIMENSION, VIEW, OR NOTE WHICH HAS BEEN MODIFIED WITH THE CURRENT DRAWING REVISION.

mat'l code				SEE NOTE 2		tolerances unless otherwise specified		CUSTOMER		FCI	
lfr	ecn no.	dr	date	linear	.XX±.01/0.X±0.3	projection		COPY		www.fciconnect.com	
E					.XXX±.005/0.XX±0.13	⊕		title		2P + 20S + 2P	
				angles	.XXX±.0020/0.XXX±0.051	⊕		product family		PwrBlade	
				dr	J. SHAFFER 05-21-02	INCH/MM		size		213	
				engr	M. MOSTOLLER 05-21-02	scale		dwg no		sheet	
				chr	M. MOSTOLLER 05-21-02	1:1		A		4 of 4	
				appd	M. MOSTOLLER 05-21-02			51874			
sheet index	revision sheet										

1 | 2

Pro/E

PDM: Rev: E

STATUS: Released

Printed: Dec 20, 2010

cage code 22526

4