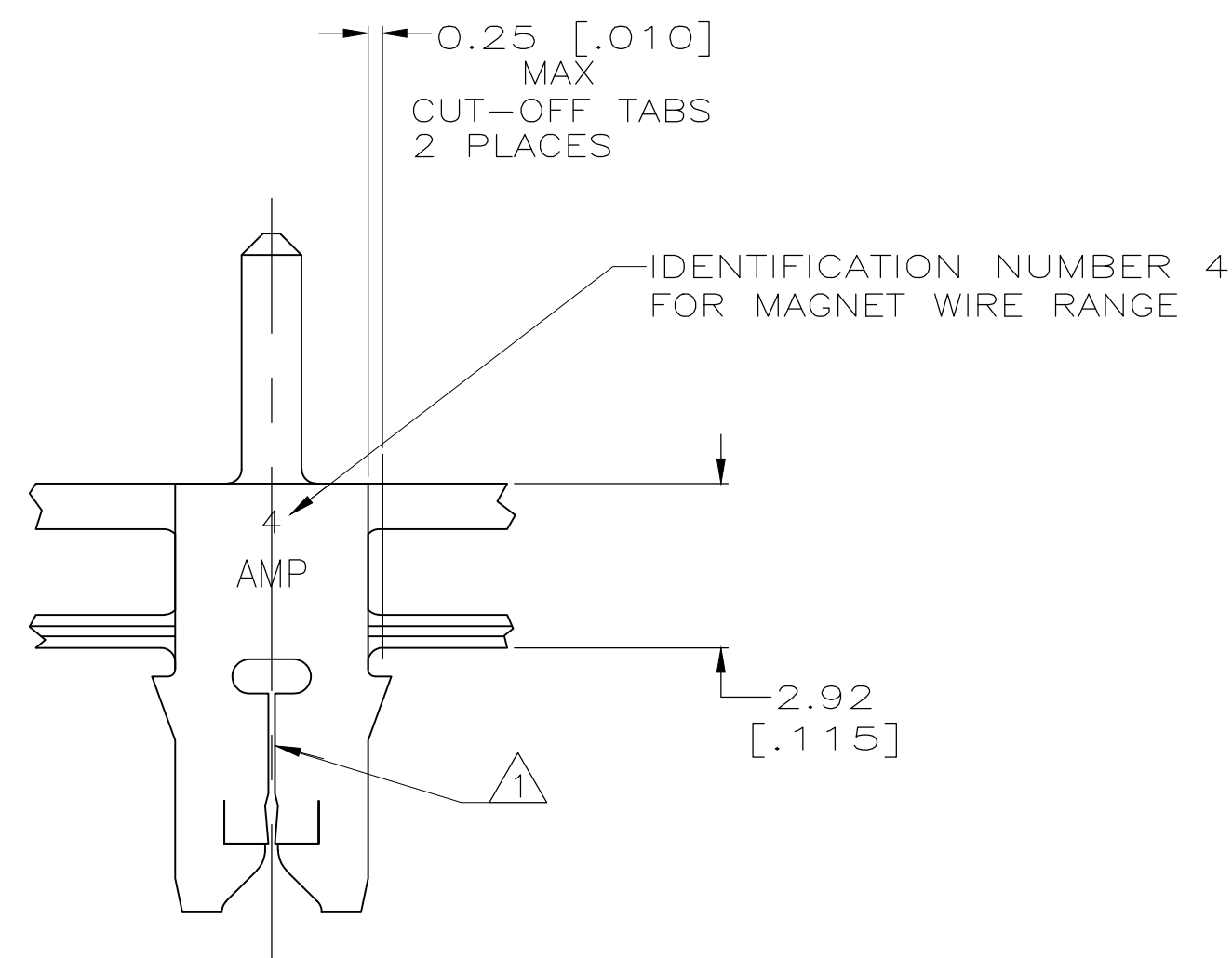
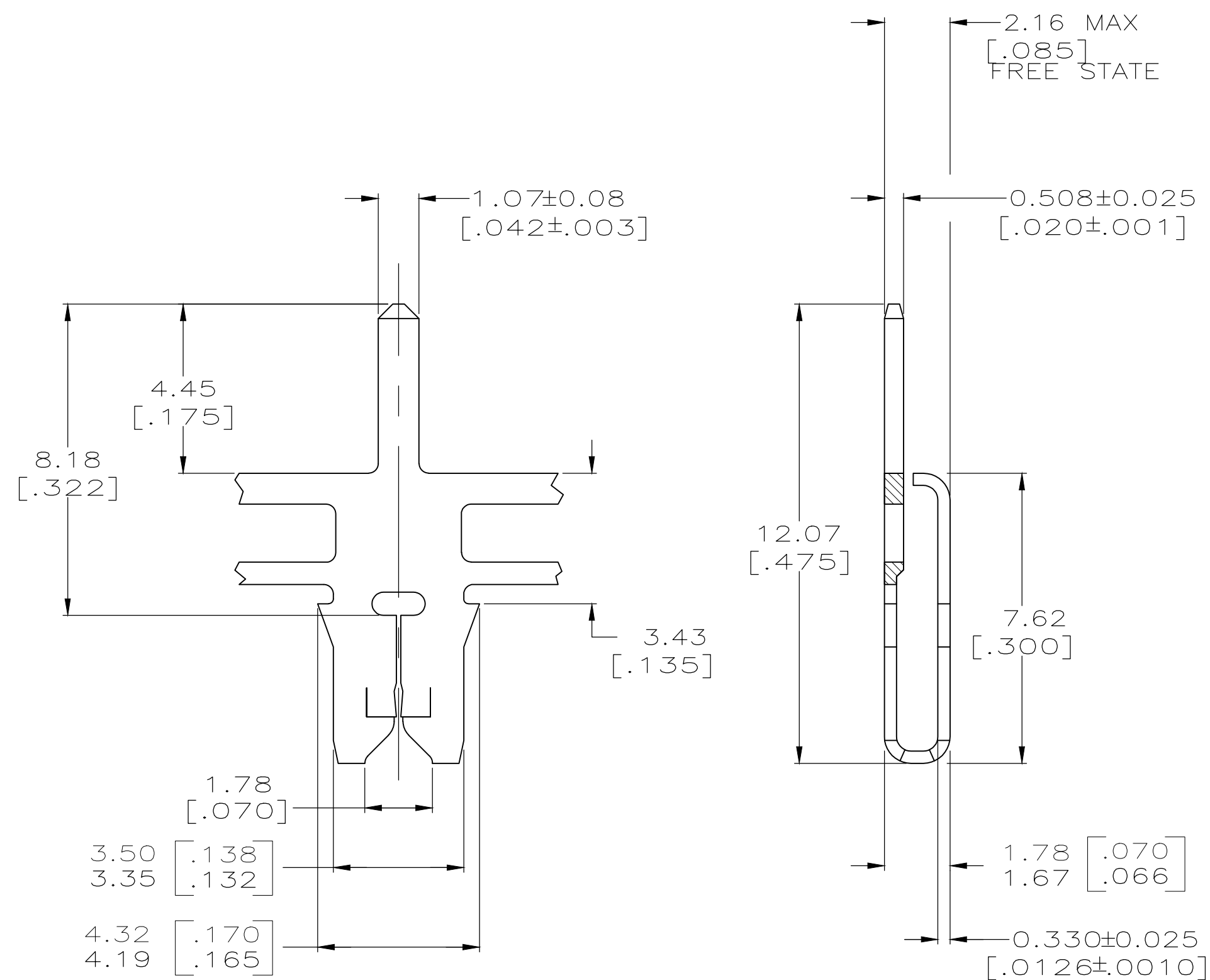
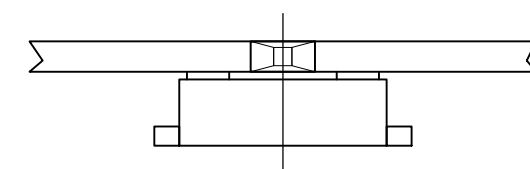


THIS DRAWING IS UNPUBLISHED. RELEASED FOR PUBLICATION
 © COPYRIGHT - By - ALL RIGHTS RESERVED.

LOC	DIST	REVISIONS			
P	LTR	DESCRIPTION	DATE	DWN	APVD
AF	50	B2	REVISED PER ECR-18-006427	11MAY2018	BW SV

- 1 SLOT TERMINATES 0.18-0.23mm [#33-#31] AWG COPPER MAGNET WIRE EITHER SINGLE OR DOUBLE OF THE SAME SIZE.
- 2 CONTINUOUS STRIP ON REELS WITH TERMINALS LOCATED ON 8.38±0.08 [.330±.003] CENTERS.
- 3 TIN OVER NICKEL PLATE
- 4 TIN PLATE



4	1217302-2
3	1217302-1
FINISH	PART NUMBER

THIS DRAWING IS A CONTROLLED DOCUMENT.		DWN 12JAN2000 MICHAEL S. FEHER	TE Connectivity	
DIMENSIONS: INCHES		CHK 12JAN2000 KURT A. RANDOLPH	SOLDER TAB, 1.07[.042], 300 SERIES MAG-MATE™	
TOLERANCES UNLESS OTHERWISE SPECIFIED:		APVD 12JAN2000 KURT A. RANDOLPH	NAME	
0 PLC ± -	1 PLC ± -	PRODUCT SPEC	108-2012	
2 PLC ± 0.25[.010]	3 PLC ± -	APPLICATION SPEC	114-2046	
4 PLC ± -	ANGLES ± -	WEIGHT	SIZE A2	CAGE CODE 00779
MATERIAL BRASS	FINISH -	CUSTOMER DRAWING	DRAWING NO C=1217302	RESTRICTED TO -
			SCALE 8:1	SHEET 1 OF 1
			REV B2	