

THIS DRAWING IS UNPUBLISHED.

RELEASED FOR PUBLICATION

2011

© COPYRIGHT 2011

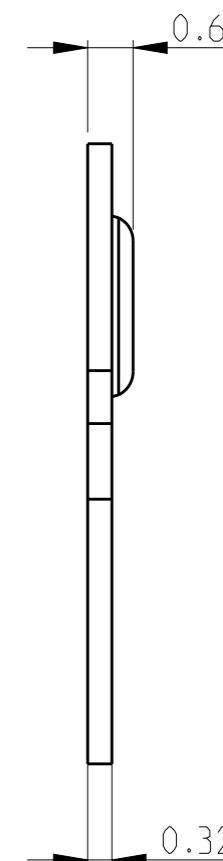
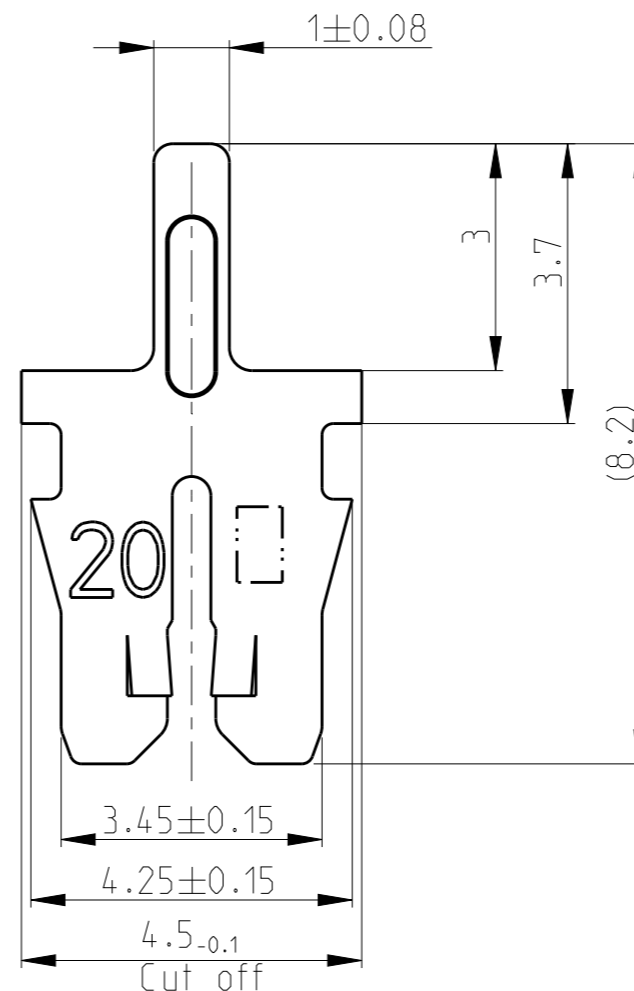
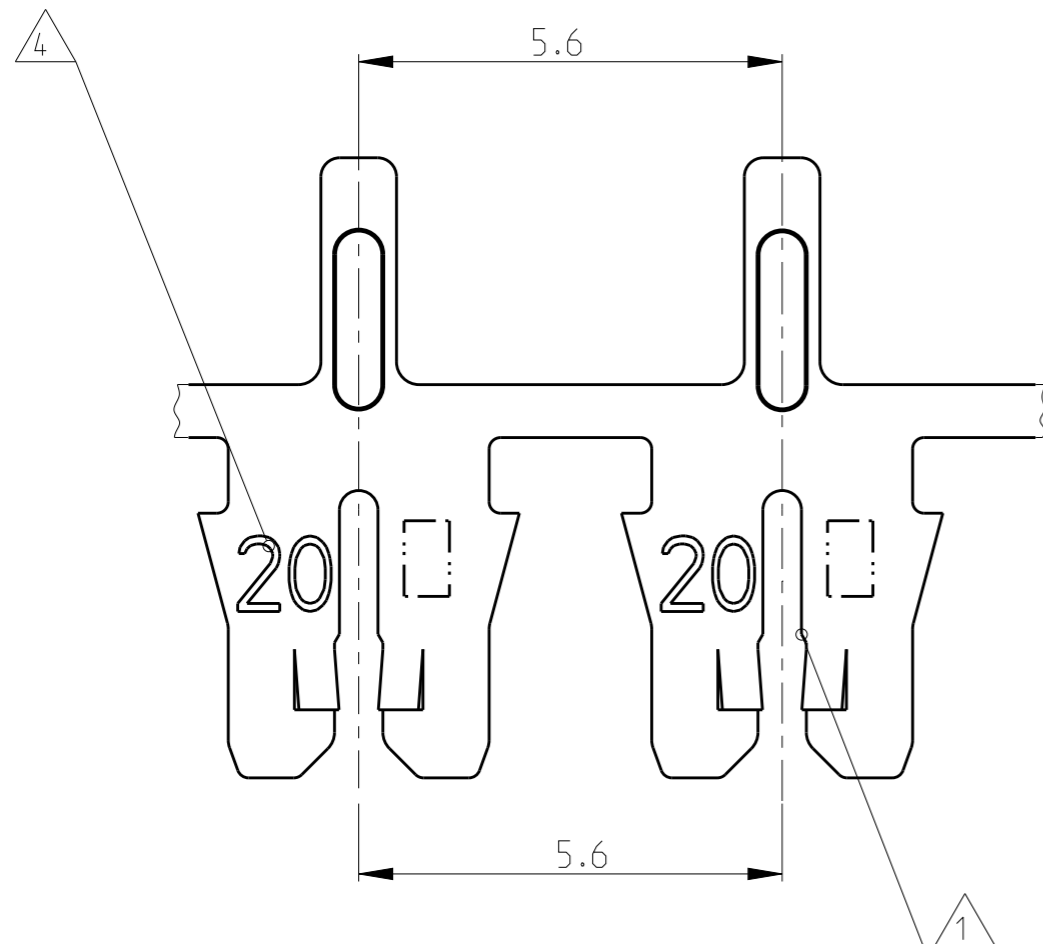
ALL RIGHTS RESERVED.

LOC
IR

DIST
-

REVISIONS

P	LTR	DESCRIPTION	DATE	DWN	APVD
	A	INITIAL RELEASE	18JUL2011	PKS	RRP
	A1	CAVITY DWG INFO CORRECTED	29SEP2011	PKS	RRP
	A2	WIRE RANGE UPDATED	16OCT2017	SV	PKS



Bemerkungen
NOTES

- 1 Geeignet fuer Kupperlackdraht $\varnothing 0.67...0.85$ mm
Einzeldraht
SLOT ACCEPTS:
SINGLE MAGNET WIRE DIA 0.67...0.85 mm
- 2 Anlieferungszustand: Kontakte fortlaufend mit
Papierzwischenlage auf Kunststoffspule aufgewickelt
Max. 5 Splice Stellen pro Spule
Splice Stellen nicht miteinander verbunden
DELIVERYSTATE: CONTACTS CONTINUOUS REELED WITH PAPER
INTERLAYER ON PLASTIC-REEL.
MAX. 5 SPLICES PER REEL
SPLICES BE NOT BONDED TOGETHER.
- 3 Kontaktkammer nach Zeichnung } 411-18516
CAVITY ACCORDING DWG.
- 4 Kennziffer fuer Drahtgroessenbereich (20)
IDENTIFICATION NO. FOR MAGNET WIRE RANGE (20)
- 5 Materialdicke } 0.32 ± 0.015
STOCK THICKNESS

1534687-1	A	CuSn	pretinned	MAG-MATE .300 mod.
PART NO	REV.	MATERIAL	SURFACE COLOR	DESCRIPTION

THIS DRAWING IS A CONTROLLED DOCUMENT.		DWN M. Neitzel 08JAN2002	TE Connectivity	
DIMENSIONS: mm		CHK H. Ploesser - APVD H. PLOESSER 26FEB2002		
TOLERANCES UNLESS OTHERWISE SPECIFIED:		PRODUCT SPEC 108-1484	NAME MAG-MATE Kontakt mit Loetpin	
0 PLC ± 0.2 1 PLC ± 0.2 2 PLC ± 0.2 3 PLC ± 0.2 4 PLC ± 0.2 ANGLES $\pm 1^\circ$		APPLICATION SPEC 114-2140	SIZE A3	CAGE CODE 00779
MATERIAL SEE TABLE	FINISH SEE TABLE	WEIGHT -	DRAWING NO 1534687	RESTRICTED TO -
CUSTOMER DRAWING			SCALE 10:1	SHEET 1 OF 1
			REV A2	