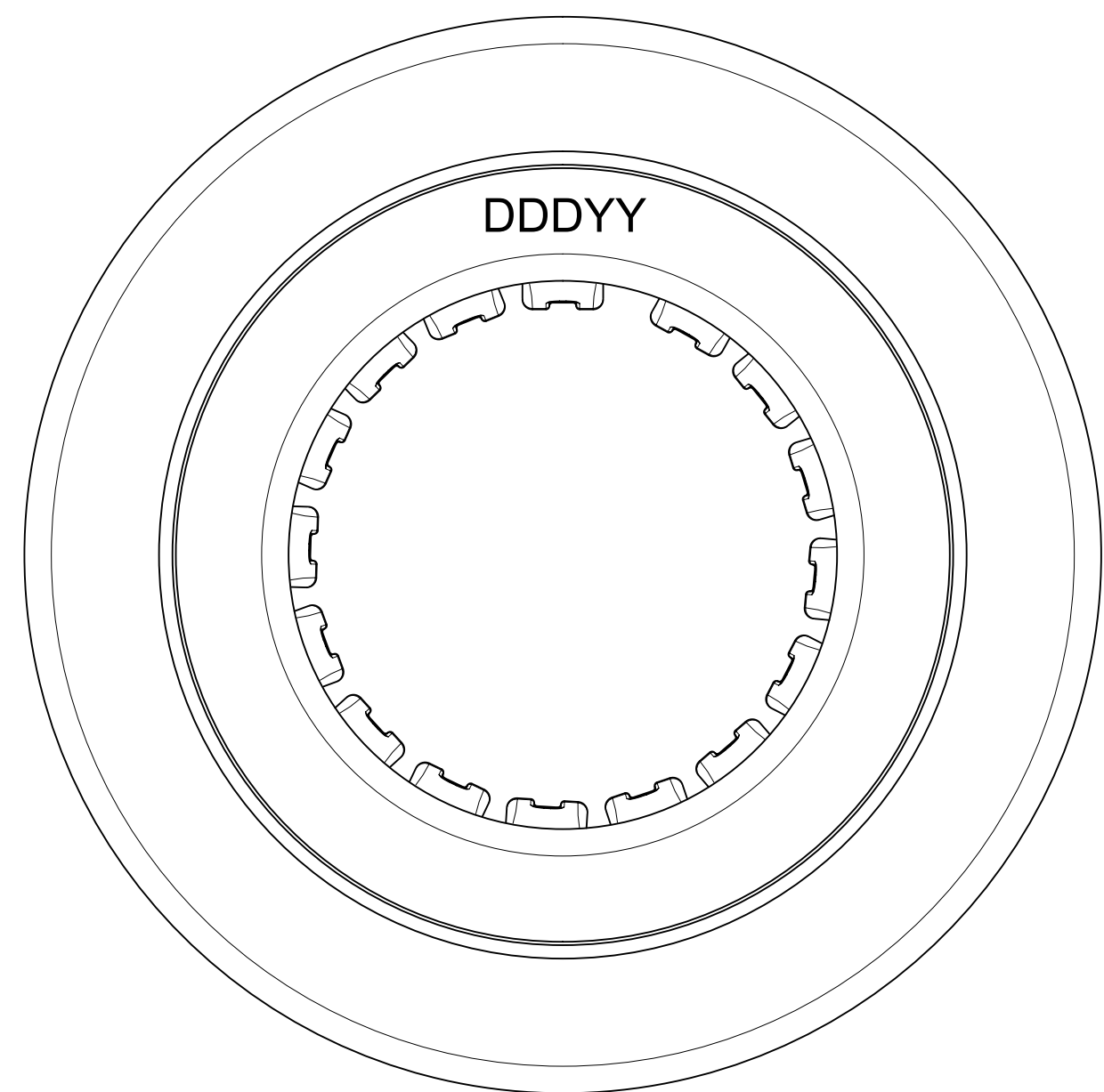
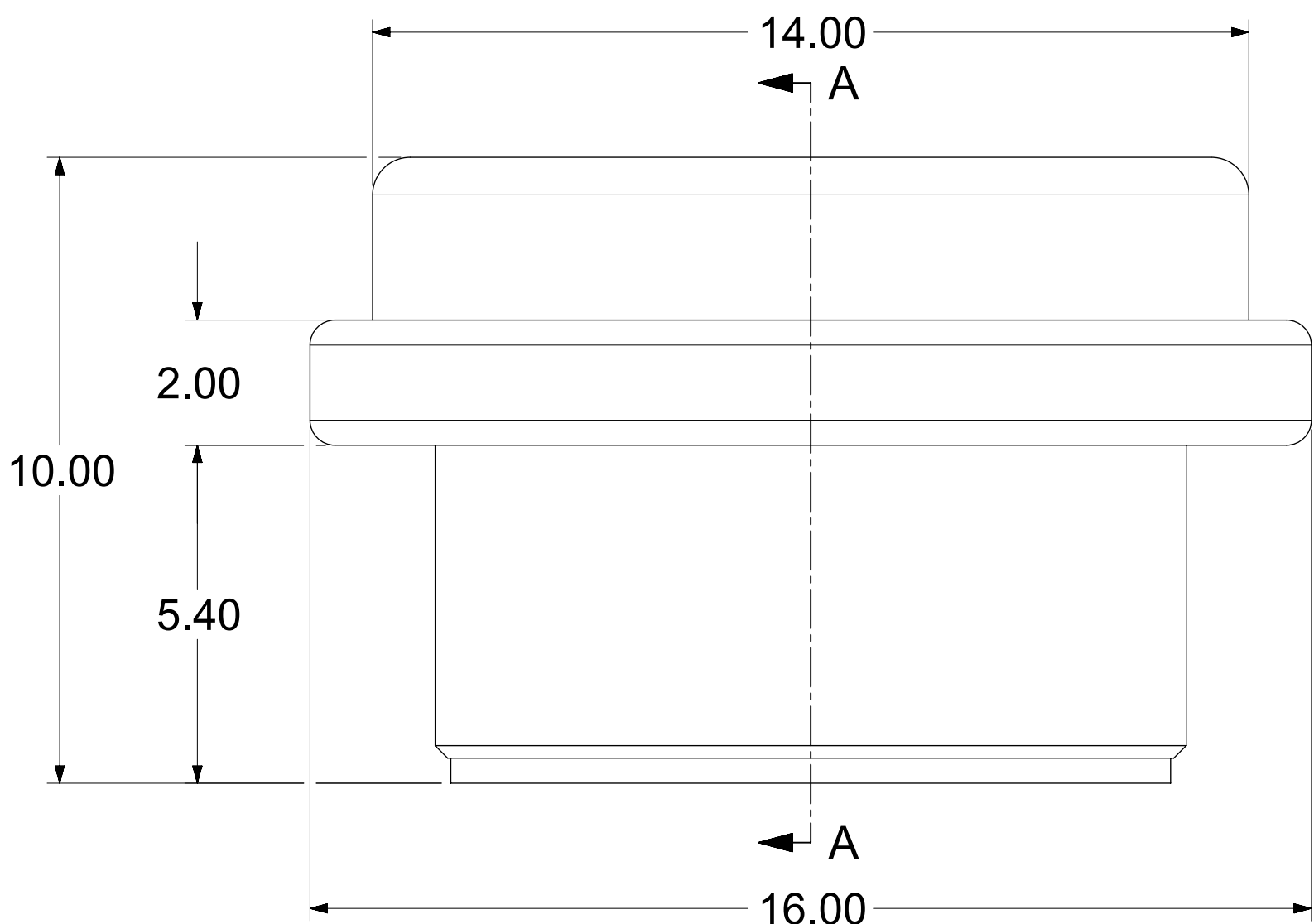
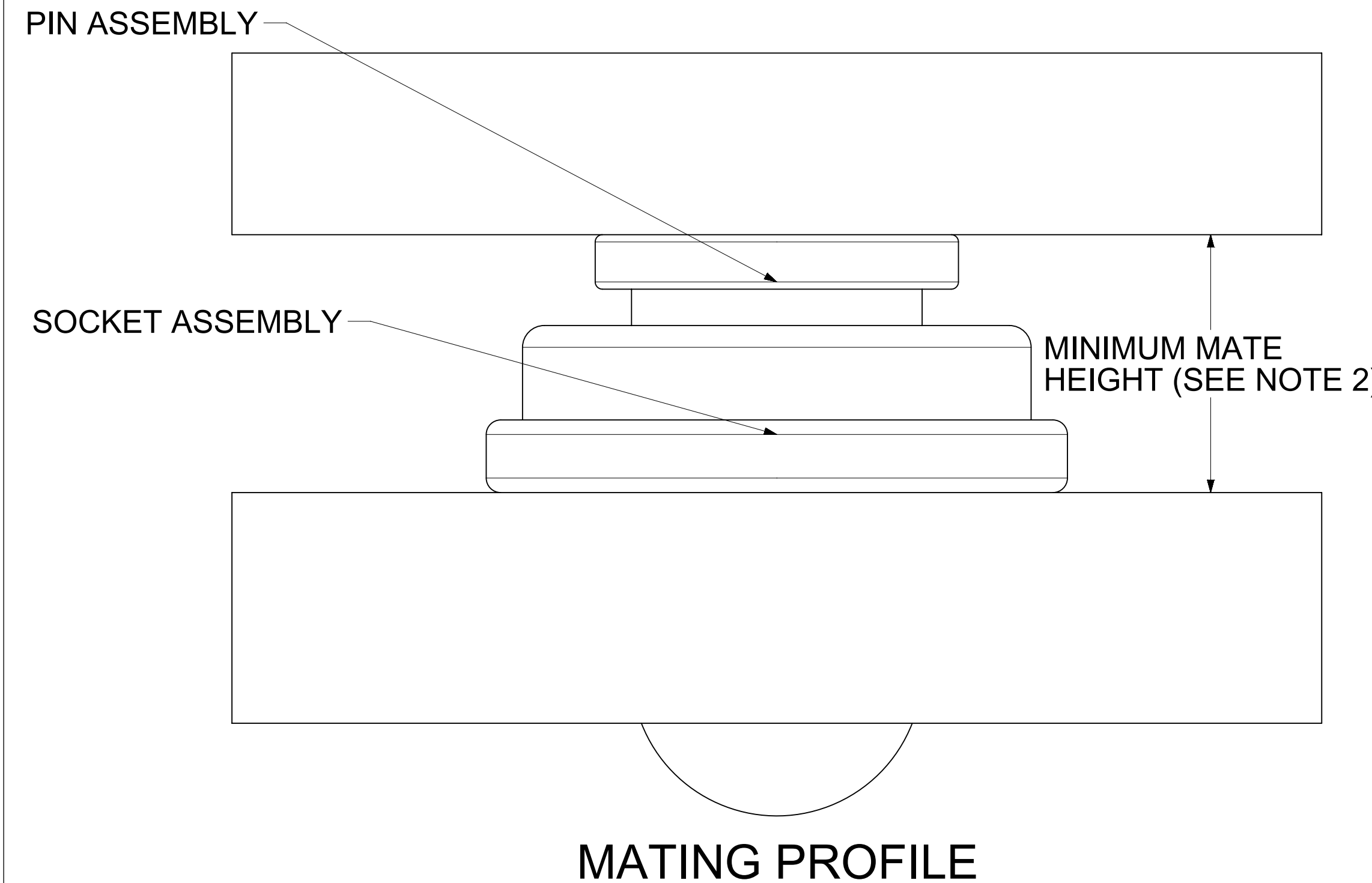
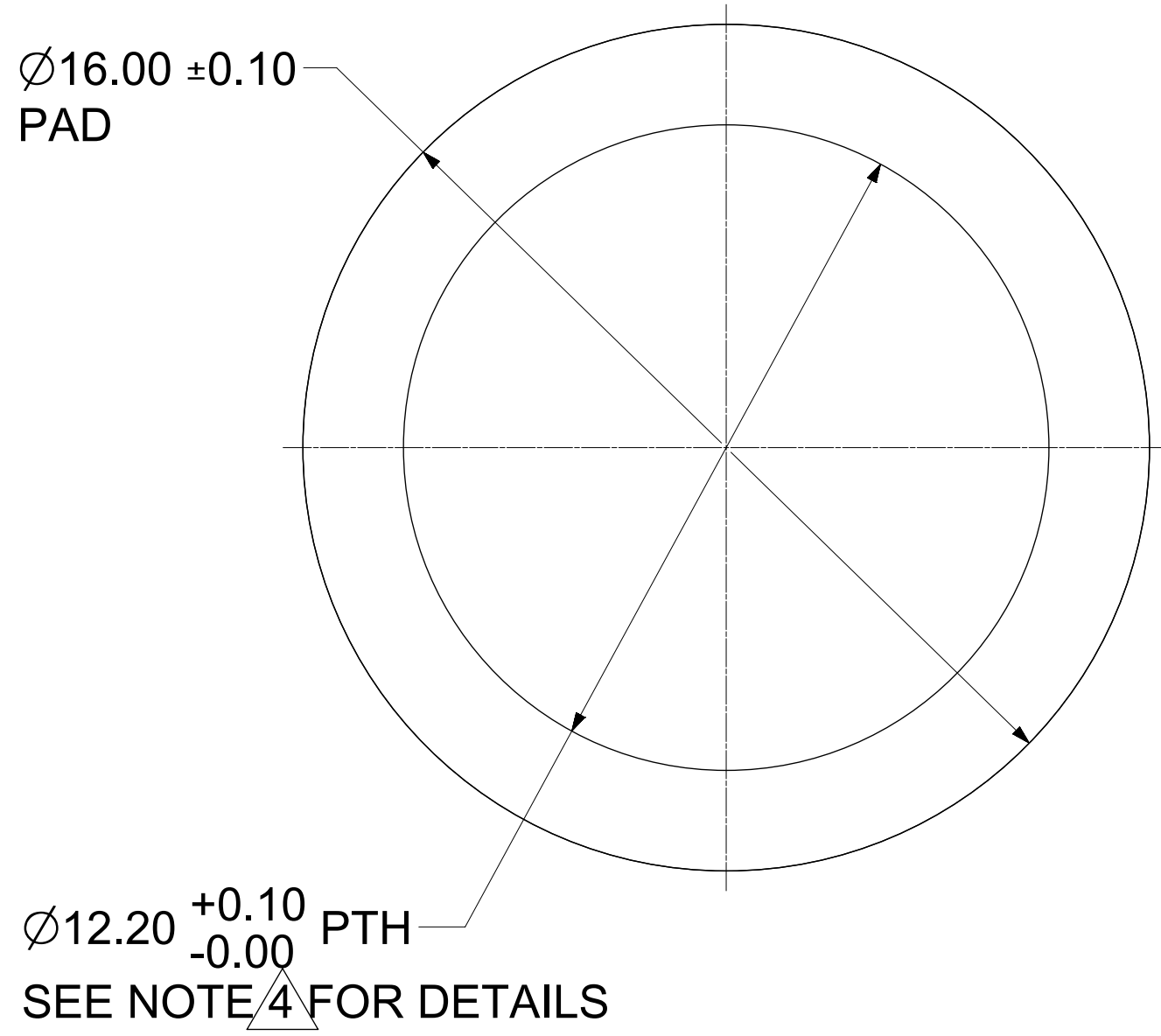


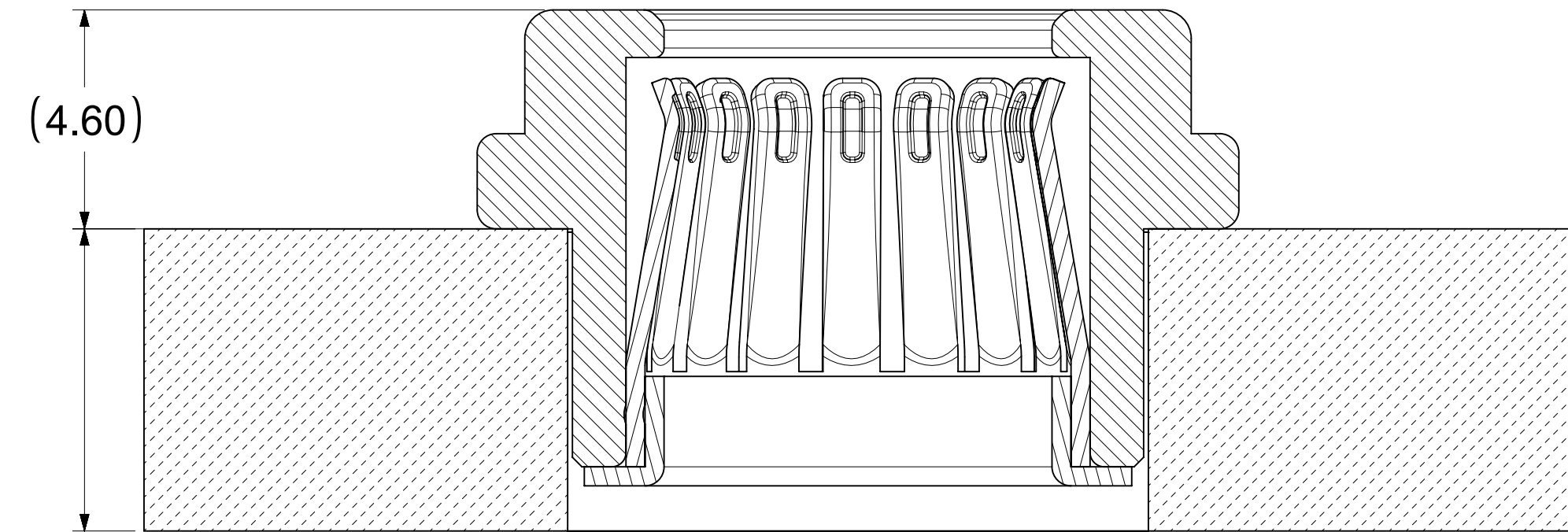
REMOVABLE PICK AND PLACE CAP SHOWN



RECOMMENDED PCB LAYOUT



- NOTES:**
- MATERIALS:**
 RETENTION CAP: STAINLESS STEEL
 PICK AND PLACE CAP: LCP UL94, V-0 COLOR BLACK
 BASE METAL: HIGH CONDUCTIVE COPPER ALLOY
 PLATING ON CONTACTS: 0.75 MICRON MIN GOLD OVER 1.27 MICRON MIN NICKEL
 PLATING ON BODY: 3.18 MICRON MIN SILVER OVER 1.27 MICRON MIN NICKEL
 - MATES WITH STANDARD PIN DRAWINGS:**
 - 8.0MM SMT DRAWING 2032633080-SD, MIN. MATING DISTANCE 6.75MM
 - 8.0MM PRESS FIT DRAWING 2032630001-SD, MIN. MATING DISTANCE 7.1MM
 - 8.0MM SCREW MOUNT DRAWING 2032634185-SD, MIN. MATING DISTANCE 10.1MM
 - PRODUCT SPECIFICATION:** 2043130001-PS
 - APPLICATION SPECIFICATION:** 2043130001-AS.
SEE APPLICATION SPEC FOR SOLDERING INFORMATION.
 - PACKAGING SPECIFICATION:** 2043180001-PK.
 - SILVER COMPONENTS WILL BE SUPPLIED TARNISH FREE BUT MAY TARNISH OVER TIME.
 - PICK AND PLACE CAP TO BE REMOVED AFTER SOLDERING
 - DATE CODE TO BE LASER MARKED APPROXIMATELY WHERE SHOWN USING DDYY FORMAT



SECTION A-A

6.35 SHOWN (1.58MM MINIMUM RECOMMENDED PCB THICKNESS)

THIS DRAWING CONTAINS INFORMATION THAT IS PROPRIETARY TO MOLEX ELECTRONIC TECHNOLOGIES, LLC AND SHOULD NOT BE USED WITHOUT WRITTEN PERMISSION											
DIMENSION UNITS: mm		SCALE: NTS		CURRENT REV DESC: UPDATED THE TITLE BLOCK						molex	
GENERAL TOLERANCES (UNLESS SPECIFIED)				EC NO: 747243							
ANGULAR TOL ± 0.5°				4 PLACES ±		DRWN: SACHIK7		2023/02/28		8.0MM SENTRALITY TOP ENTRY SMT STANDARD SOCKET IN TRAY	
				3 PLACES ±		CHK'D: SCS02		2023/04/25			
				2 PLACES ± 0.15		APPR: HTHYAGARAJ		2023/04/26		PRODUCT CUSTOMER DRAWING	
				1 PLACE ± 0.25		INITIAL REVISION:				DOCUMENT NUMBER	
				0 PLACES ±		DRWN: TOMLU		2017/03/10		2043180001-SD	
						APPR: JJONIAK		2018/06/14		DOC TYPE DOC PART REVISION	
DRAFT WHERE APPLICABLE MUST REMAIN WITHIN DIMENSIONS				THIRD ANGLE PROJECTION		DRAWING D-SIZE		SERIES 204318		MATERIAL NUMBER 2043180001	
										CUSTOMER GENERAL MARKET	
										SHEET NUMBER 1 OF 1	