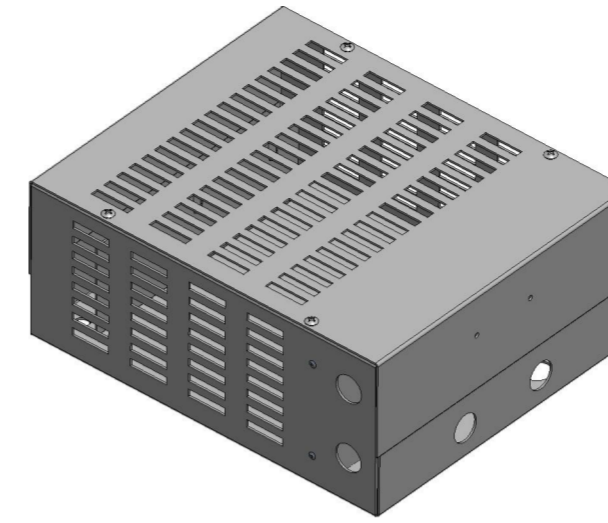
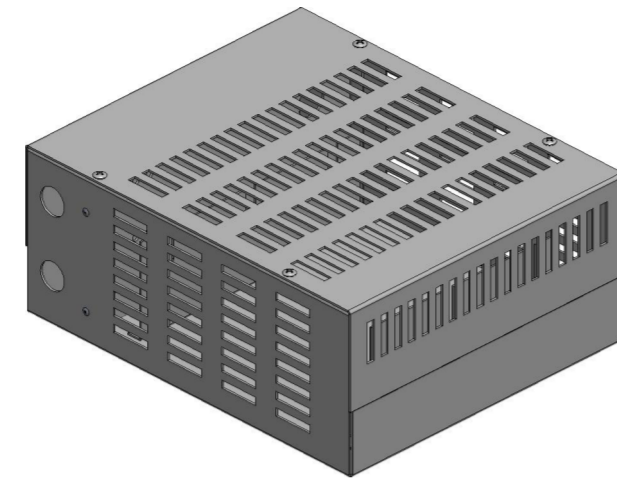
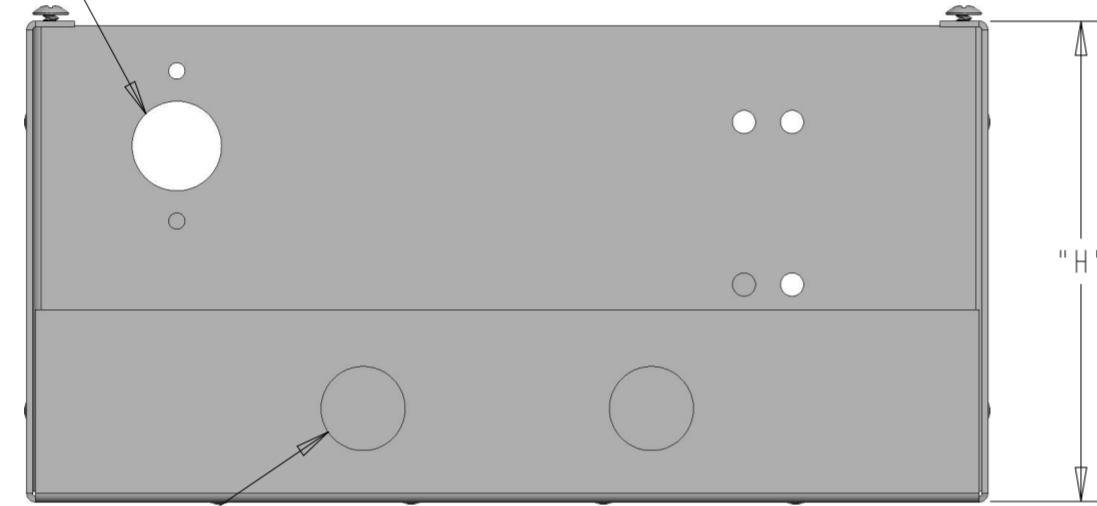


P	LTR	DESCRIPTION	DATE	DWN	APVD
	A	INITIAL RELEASE	07OCT2021	KS	AP



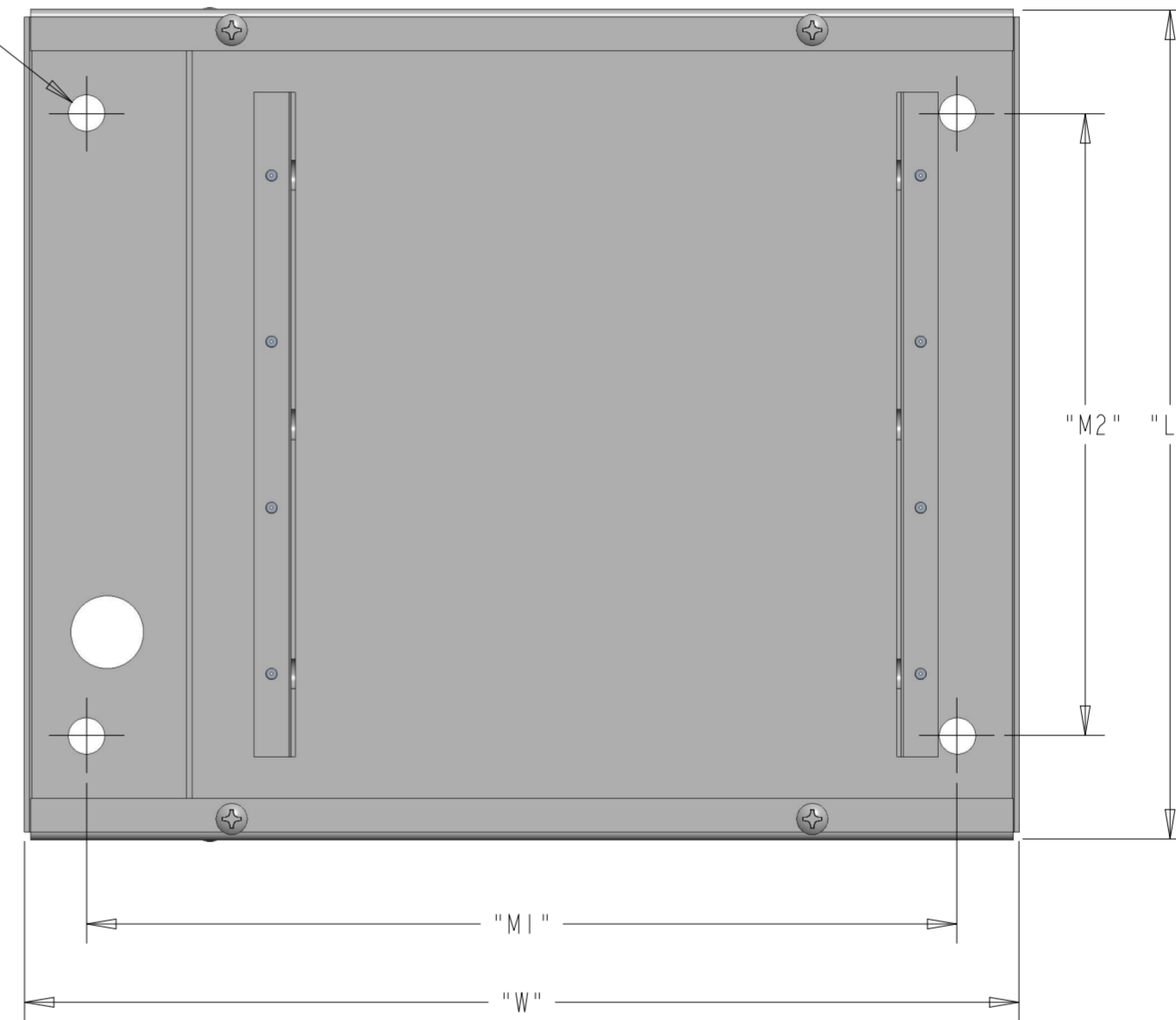
SCALE 1:5

TEMPERATURE SENSOR (OPTIONAL)



(x7) Ø22.225 (KNOCKOUTS)  
[ONE LOCATED ON BOTTOM  
2 ON LEFT AND RIGHT SIDE]

(x4) Ø11.125  
(MOUNTING HOLES)



PART NUMBER	W (mm)	L (mm)	H (mm)	M1 (mm)	M2 (mm)	TOTAL RESISTANCE	H.P.	DUTY CYCLE	DRIVE VOLTAGE	BRAKING TORQUE
HPBA010A190R100E	305	254	127	267	191	190 Ohms ± 10%	1.00	100%	230 V	100%

NOTE:  
1. FOR FURTHER TECHNICAL INFORMATION PLEASE SEE THE DATASHEET FOR THE HPBA SERIES

THIS DRAWING IS A CONTROLLED DOCUMENT.		DWN S. KARTHIK 20-09-2021	TE Connectivity	
DIMENSIONS: mm		CHK ALLAN PILE 20-09-2021		
TOLERANCES UNLESS OTHERWISE SPECIFIED:		APVD ALLAN PILE 20-09-2021	NAME BRAKING RESISTOR ASSEMBLY TYPE HPBA SERIES HPBA010A190R100E	
0 PLC ± 1 PLC ± 2 PLC ±0.50 3 PLC ±0.500 4 PLC ± ANGLES ± FINISH -		PRODUCT SPEC -	RESTRICTED TO -	
MATERIAL -		APPLICATION SPEC -	SIZE A2	CAGE CODE 00779
		WEIGHT -	DRAWING NO C-2176470-8	
		CUSTOMER DRAWING	SCALE 1:2	SHEET 1 OF 2
			REV A	

4

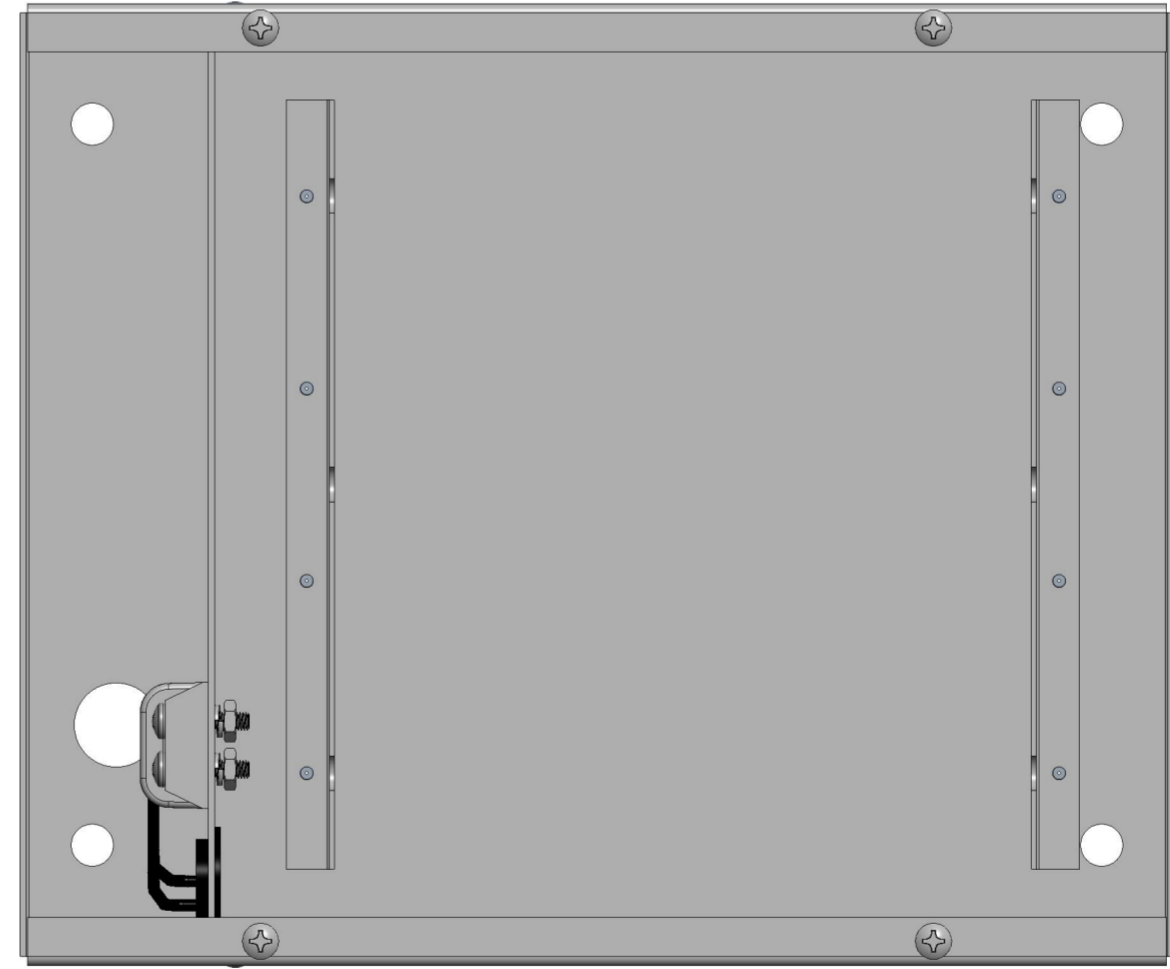
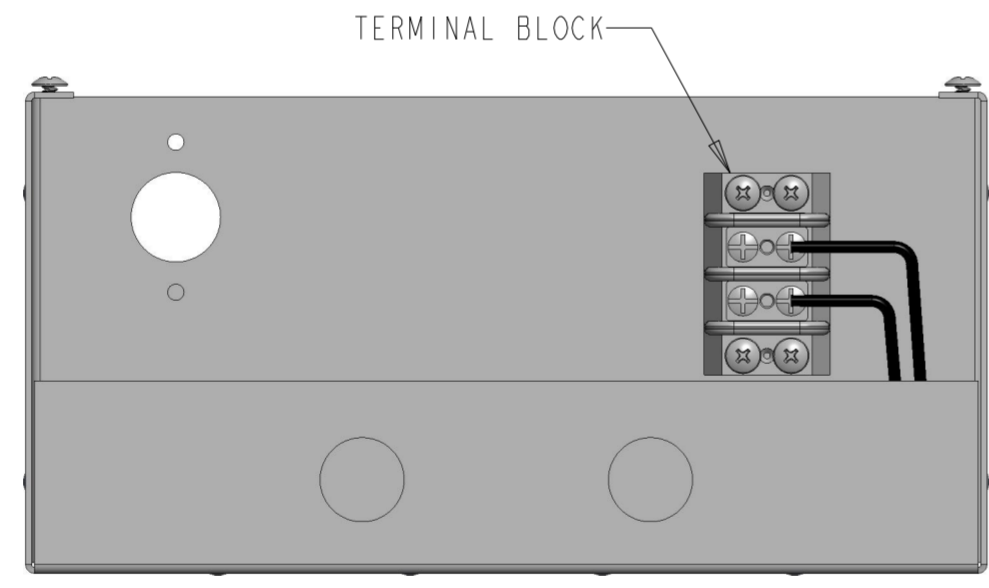
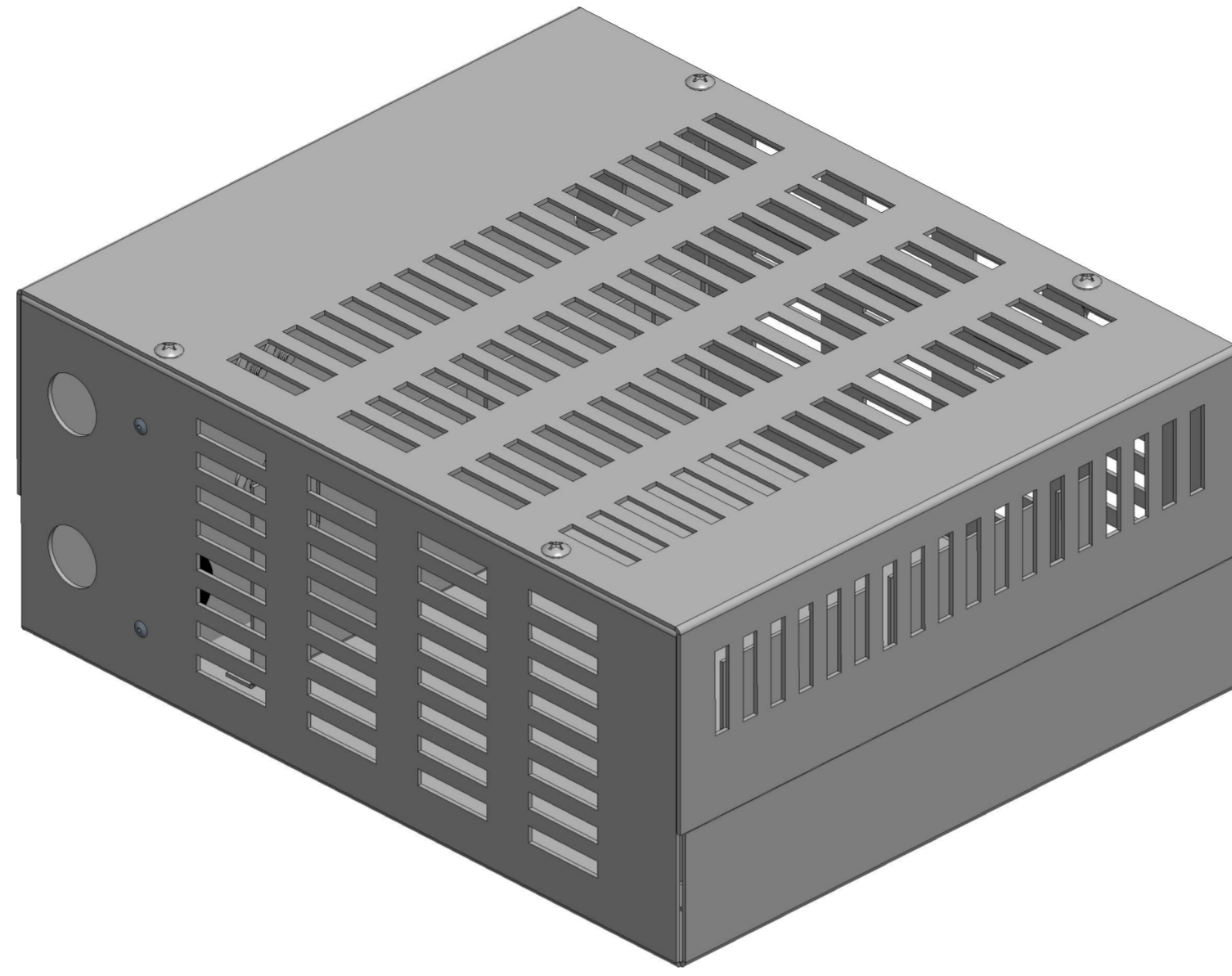
3

2

1

© 2021 TE Connectivity. All Rights Reserved.

REVISIONS					
P	LTR	DESCRIPTION	DATE	DWN	APVD
-		SEE SHEET 1	-	-	-



THIS DRAWING IS A CONTROLLED DOCUMENT.		DWN S. KARTHIK 20-09-2021	TE Connectivity																							
DIMENSIONS: mm		CHK ALLAN PILE 20-09-2021																								
TOLERANCES UNLESS OTHERWISE SPECIFIED:		APVD ALLAN PILE 20-09-2021	NAME BRAKING RESISTOR ASSEMBLY TYPE HPBA SERIES HPBA010A190R100E																							
<table border="0"> <tr> <td>0 PLC</td> <td>±</td> <td></td> </tr> <tr> <td>1 PLC</td> <td>±</td> <td></td> </tr> <tr> <td>2 PLC</td> <td>±0.50</td> <td></td> </tr> <tr> <td>3 PLC</td> <td>±0.500</td> <td></td> </tr> <tr> <td>4 PLC</td> <td>±</td> <td></td> </tr> <tr> <td>ANGLES</td> <td>±</td> <td></td> </tr> <tr> <td>FINISH</td> <td></td> <td></td> </tr> </table>		0 PLC	±		1 PLC	±		2 PLC	±0.50		3 PLC	±0.500		4 PLC	±		ANGLES	±		FINISH			PRODUCT SPEC -	SIZE A2		
0 PLC	±																									
1 PLC	±																									
2 PLC	±0.50																									
3 PLC	±0.500																									
4 PLC	±																									
ANGLES	±																									
FINISH																										
MATERIAL -		APPLICATION SPEC -	CAGE CODE 00779	DRAWING NO C-2176470-8	RESTRICTED TO -																					
		WEIGHT -	SCALE 1:2 SHEET 2 OF 2 REV A																							
		CUSTOMER DRAWING																								