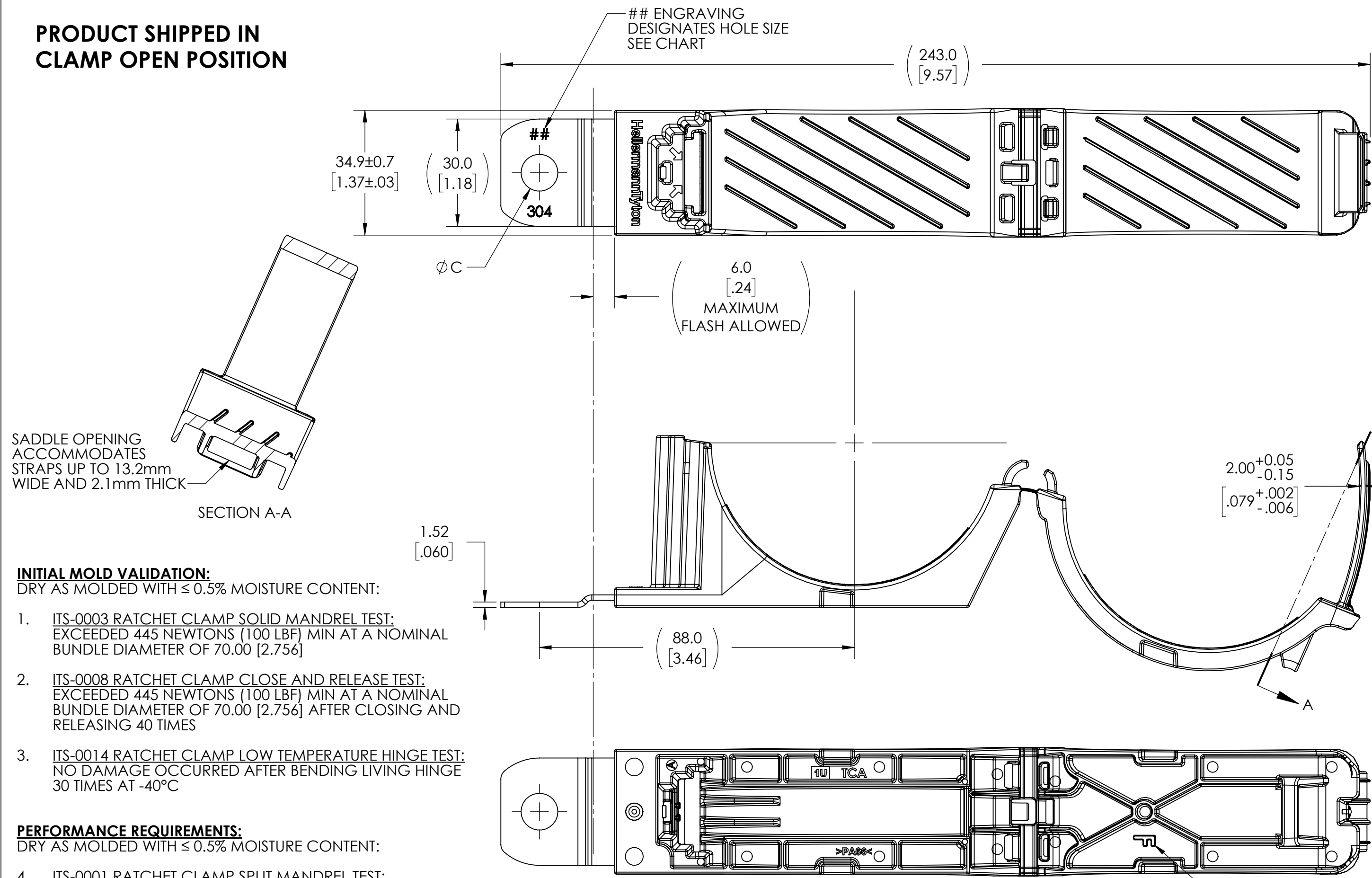


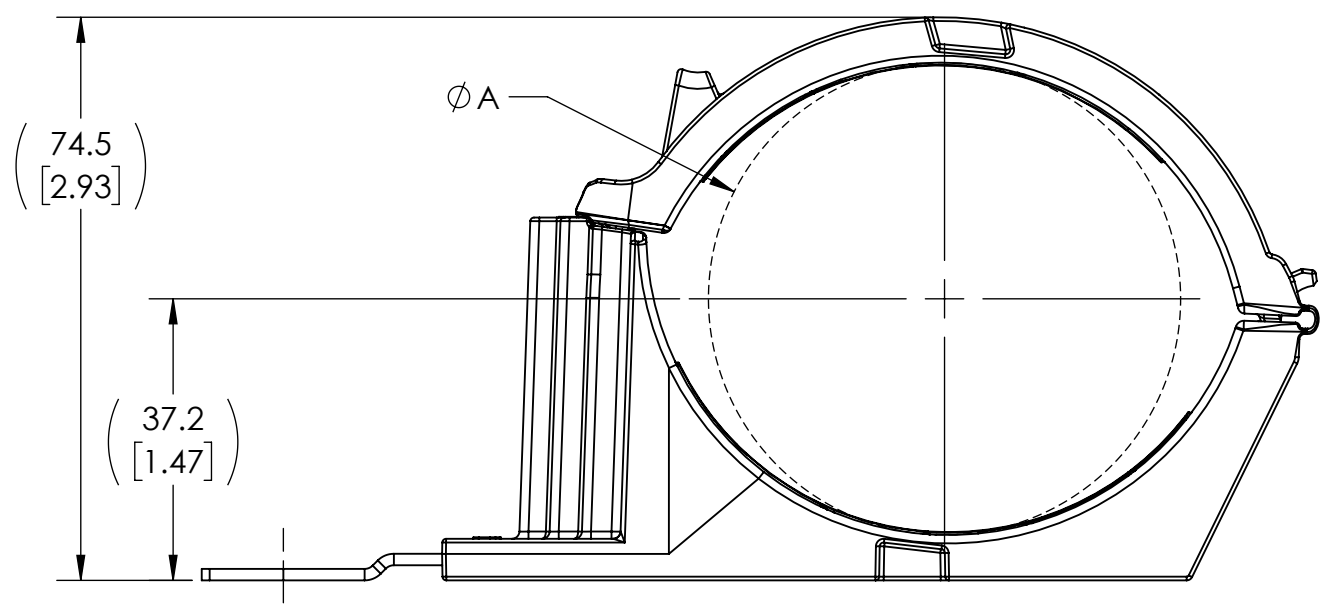
PRODUCT SHIPPED IN CLAMP OPEN POSITION



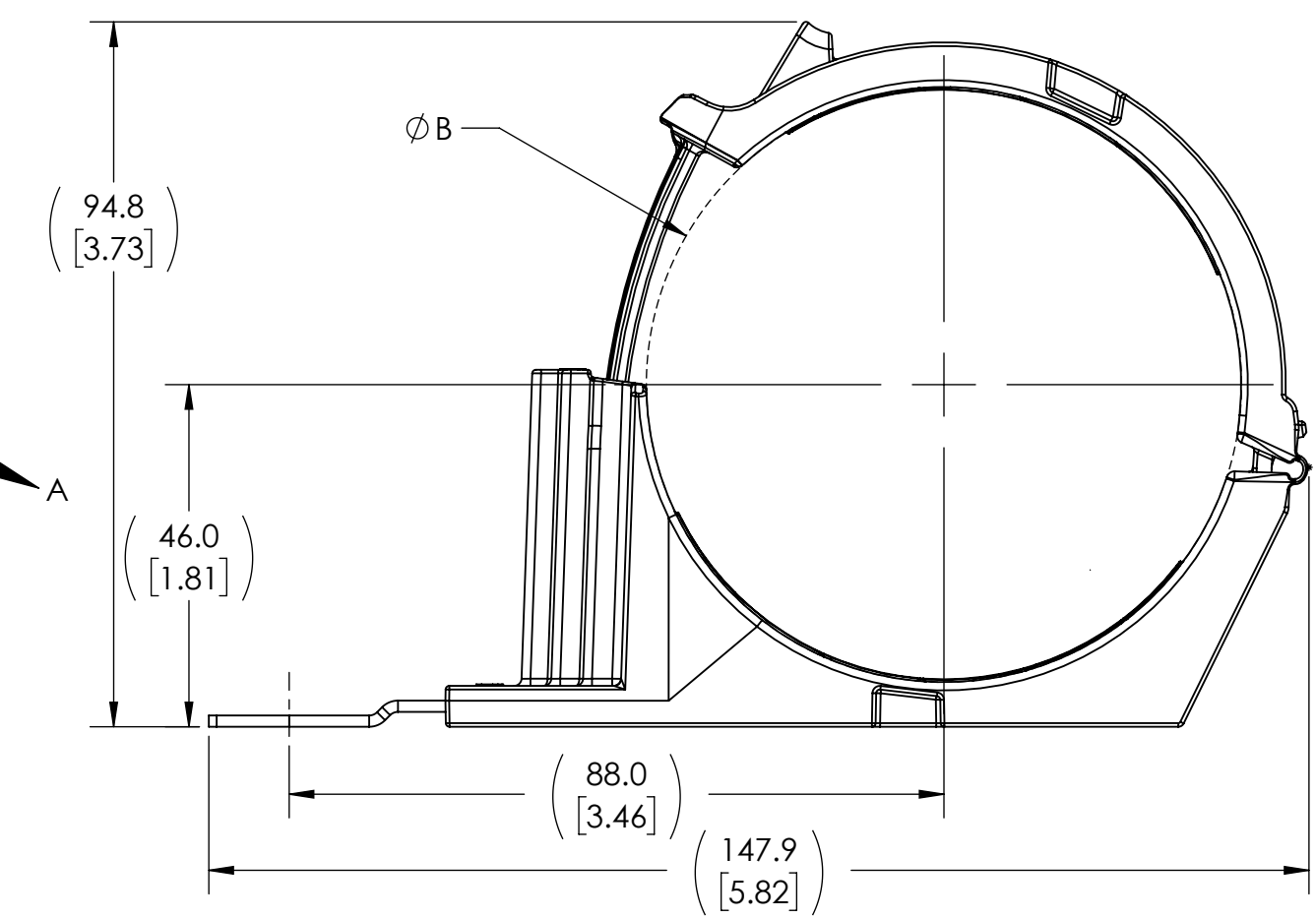
- INITIAL MOLD VALIDATION:**
DRY AS MOLDED WITH ≤ 0.5% MOISTURE CONTENT:
- ITS-0003 RATCHET CLAMP SOLID MANDREL TEST: EXCEEDED 445 NEWTONS (100 LBF) MIN AT A NOMINAL BUNDLE DIAMETER OF 70.00 [2.756]
 - ITS-0008 RATCHET CLAMP CLOSE AND RELEASE TEST: EXCEEDED 445 NEWTONS (100 LBF) MIN AT A NOMINAL BUNDLE DIAMETER OF 70.00 [2.756] AFTER CLOSING AND RELEASING 40 TIMES
 - ITS-0014 RATCHET CLAMP LOW TEMPERATURE HINGE TEST: NO DAMAGE OCCURRED AFTER BENDING LIVING HINGE 30 TIMES AT -40°C

- PERFORMANCE REQUIREMENTS:**
DRY AS MOLDED WITH ≤ 0.5% MOISTURE CONTENT:
- ITS-0001 RATCHET CLAMP SPLIT MANDREL TEST: 445 NEWTONS (100 LBF) MIN AT A NOMINAL BUNDLE DIAMETER OF 70.00 [2.756]
 - MAXIMUM PERCENT REGRIND PERMISSIBLE: 25%
 - MAXIMUM ALLOWABLE FLASH TO BE: 0.25mm
 - MAXIMUM ALLOWABLE MISMATCH TO BE 0.25mm

NOTE: TESTING #1, #2, #3 AND #4 CAN BE DONE ON ANY TYPE NUMBER AND WILL APPLY TO ALL OTHER TYPE NUMBERS IN THE CHART



MINIMUM BUNDLE DIAMETER



MAXIMUM BUNDLE DIAMETER

BUNDLE TYPES	A	B
	MINIMUM DIAMETER	MAXIMUM DIAMETER
SOFT	63.0 [2.48]	80.0 [3.15]
HARD	62.2 [2.45]	79.2 [3.12]

GLOBAL PART DESCRIPTION	MATERIAL	COLOR	C ±0.13	TYPE	##
					ENGRAVING
RCF180SM6SS-PA66HIRHSUV-BK	PA66HIRHSUV	BLACK	6.50 [.256]	RCF180SM6SS	6
RCF180SM8SS-PA66HIRHSUV-BK	PA66HIRHSUV	BLACK	8.31 [.327]	RCF180SM8SS	8
RCF180SM10SS-PA66HIRHSUV-BK	PA66HIRHSUV	BLACK	10.29 [.405]	RCF180SM10SS	10
RCF180SM12SS-PA66HIRHSUV-BK	PA66HIRHSUV	BLACK	12.95 [.510]	RCF180SM12SS	12

Notes	Material	Units: millimeters	Drawn	MHT	03/29/2019	Article/Type-No	SEE CHART	Scale	1:1
	1. PA66HIRHSUV 2. STAINLESS STEEL	Dimension without tolerances details to: .xxx = ±.013 .xx = ±.13 .x = ±.3 None = ±.8 < = ±0.5*	Approved	CTF	03/29/2019	Title	RATCHET P-CLAMP, SIZE F, 180° SHORT, CLAMP RANGE 63.0 TO 80.0, STAINLESS STEEL	Project Number	PRP19-1057
			The copyright of this drawing is reserved by HellermannTyton. It is issued on condition that it is not reproduced, copied, or disclosed to a third party, either wholly or in part, without the consent of HellermannTyton.		HellermannTyton North America Email: corp@htamericas.com Web: www.hellermann.tyton.com		Drawing-No	19-1057-106-CSU	Format
	Dimension Formatted mm{in}		Production : Phase		Sheet		1/1		