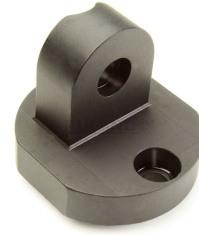
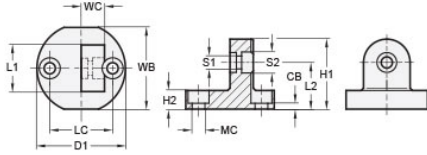




MT20-CBSW-30-AN

Ruland Swivel Clamp Connector Base, Ruland Swivel Thru Hole 6.5mm, Clamp Width 30mm, Clamp Screw M6, Black Anodized Aluminum



Description

Ruland MT20-CBSW-30-AN is a swivel clamp connector base with a 44mm base width, 50mm base diameter, 30mm clamp width, M6 clamp screw, and 44.5mm overall length. It is designed to fit with MT20 swivel clamp joints, t-swivel clamp joints, and swivel mounts with the same width and height. When combined with a swivel clamp or connector MT20-CBSW-30-AN is an ideal articulating mounting solution for screens, sensors, reflectors, plexiglass machine guards, and other components that require frequent adjustments. An MT20-SWALK-M6-30 adjustable clamping handle can be used to join it to clamps and connectors for rapid repositioning without the use of tools. It is aluminum with a black anodized finish and screws are 304 stainless steel for added corrosion resistance when compared to unplated types. MT20-CBSW-30-AN can be permanently installed on extruded aluminum frames, sheet metal, and other surfaces using M6 hardware or the user can opt for portability by using MAGNET-57-36 magnetic base. It is manufactured by Otto Ganter, inventoried by Ruland, and RoHS3 compliant.

Product Specifications

Base Width WB	44 mm	Base Height H2	12.5 mm
Base Diameter D1	50 mm	Clamp Length L1	30 mm
Clamp Width WC	15 mm	Overall Height H1	44.5 mm
Center To Center LC	36 mm	Edge To Center L2	29.5 mm
Mounting Counterbore Diameter MC	M6	Counterbore to Base CB	6.5 mm
Swivel Counterbore 1 Diameter S1	6.5 mm	Swivel Counterbore 2 Diameter S2	10.5 mm
Material Specification	Anodized Aluminum	Manufacturer	JW Winco/ Otto Ganter
Country of Origin	Germany	Weight (lbs)	0.203500
UPC	634529231449	Tariff Code	7609.00.0000
UNSPC	31162908		