

Design Change Notification

August 5th, 2022

To: Sanyo Denki America Cooling Distributors

Product: BLDC FAN MOTOR

Model: San Ace 60WF(9WF) 60mm sq. x 15mm thick
(Please refer Attached Sheet for a complete part number list.)SANYO DENKI CO.,LTD.
Design Dept., Cooling Systems Div.

Approved	Checked	Designed
		

SANYO DENKI America, Inc.
Cooling Systems Division

No.	Contents	Before Change	After Change	Description
1	Motor drive IC, electronic parts, Motor Windings and PWB	Use motor drive IC manufactured by ON-Semiconductor.	Use motor drive IC manufactured by Nuvoton-technology-Japan.	Change to the motor drive IC due to discontinuation of production by the semiconductor manufacturer. Also change to some electric parts except IC, Motor windings and PWB due to the change of the motor drive IC.
2	Specifications	See the Attached Sheet.	See the Attached Sheet.	
3	Implementation Date			Implementation Date: From May, 2023 production (Estimated). Please note that the changeover schedule to new IC may change according to the number of products in the inventory.

No. A0053317 - Attached Sheet 1

[MODEL LIST]

San Ace 60WF (9WF) – 60mm x 15mm thick

MODEL	Change contents
9WF0624H701	Attached Sheet 2
9WF0624H702	
9WF0624H705	
9WF0624H7D01	
9WF0624H7D05D	
9WF0624H704	Attached Sheet 3

No. A0053317 - Attached Sheet 2

[MODEL]

9WF0624H701, 9WF0624H702, 9WF0624H705,
9WF0624H7D01, 9WF0624H7D05D

[Contents of change]

		Before Change	After Change
Motor drive IC	Type name	LA6588MC	AN44170(KA44170)
	Manufacture	On-semiconductor	Novoton-technology-Japan
Operating voltage		No change	
Electrical current		No change	
Speed		No change	
Operating temp.		No change	
Sound pressure level		No change	
Control terminal		Non-applicable	
Air flow – static pressure character		No change	
PWM duty cycle - Speed characteristic		Non-applicable	
Sensor spec.		No change	
Life Expectancy		No change	

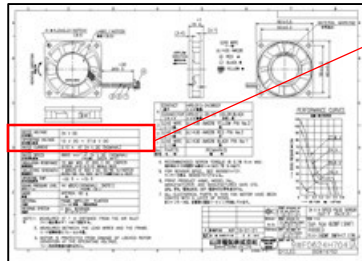
No. A0053317 - Attached Sheet 3

[MODEL]

9WF0624H704

[Contents of change]

		Before Change	After Change
Motor drive IC	Type name	LA6588MC	AN44170(KA44170)
	Manufacture	On-semiconductor	Novoton-technology-Japan
Operating voltage		10 VDC ~ 27.6 VDC Refer to FIG.1	20.4 VDC ~ 27.6 VDC Refer to FIG.1
Electrical current		No change	
Speed		No change	
Operating temp.		No change	
Sound pressure level		No change	
Control terminal		Non-applicable	
Air flow – static pressure character		No change	
PWM duty cycle - Speed characteristic		Non-applicable	
Sensor spec.		No change	
Life Expectancy		No change	

FIG.1**Before Change**

RATED VOLTAGE 定格電圧	24 V DC
OPERATING VOLTAGE 使用電圧範囲	10 V DC ~ 27.6 V DC

**After Change**

RATED VOLTAGE 定格電圧	24 V DC
OPERATING VOLTAGE 使用電圧範囲	20.4 V DC ~ 27.6 V DC