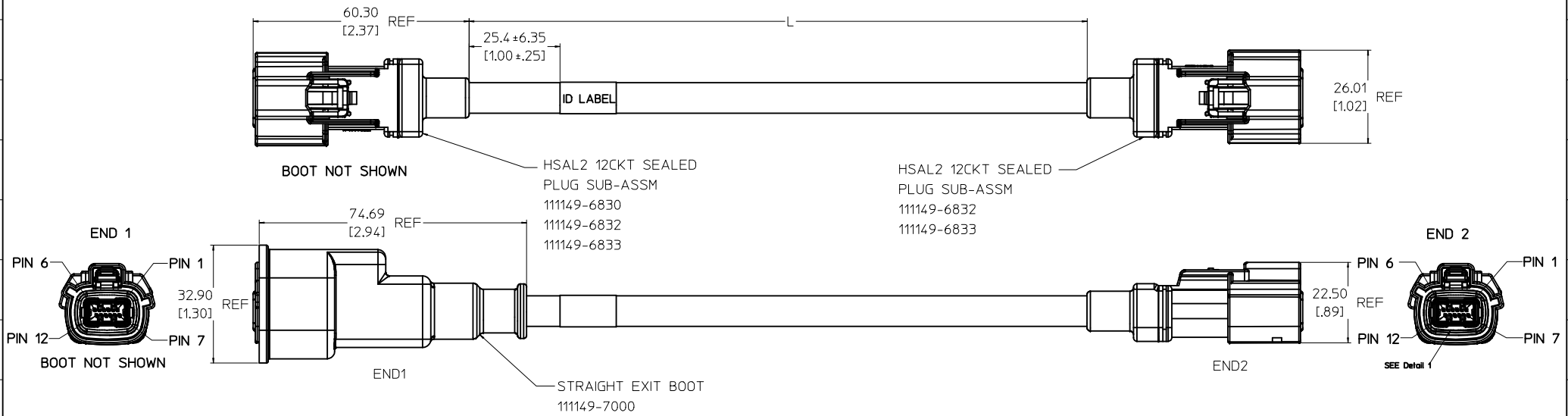
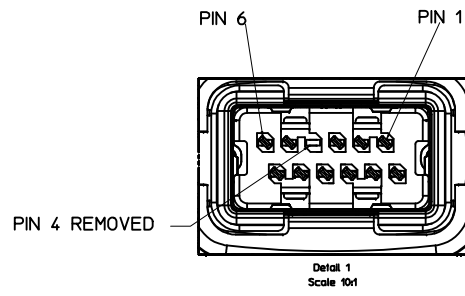
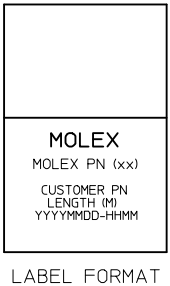


MOLEX PN	CUST PN	DESCRIPTION	END 1		END 2		L (m)	L (in)	TOL mm[in]
			POL	COLOR	POL	COLOR			
111149-1401	AXE34328	HSAL2 12CKT IPM ASSM, STR PLUG-STR PLUG	A	BLACK	D	GREEN	1	39	≤2m: +25[1.0]/-0  >2m: +50[2.0]/-0
111149-1425		HSAL2 12CKT IPM ASSM, STR PLUG-STR PLUG	A	BLACK	D	GREEN	2.5	98	
111149-1404		HSAL2 12CKT IPM ASSM, STR PLUG-STR PLUG	A	BLACK	D	GREEN	4	157	
111149-1406		HSAL2 12CKT IPM ASSM, STR PLUG-STR PLUG	A	BLACK	D	GREEN	6	236	
111149-1407		HSAL2 12CKT IPM ASSM, STR PLUG-STR PLUG	A	BLACK	D	GREEN	7	276	
111149-1485		HSAL2 12CKT IPM ASSM, STR PLUG-STR PLUG	A	BLACK	D	GREEN	8.5	335	
111149-1410		HSAL2 12CKT IPM ASSM, STR PLUG-STR PLUG	A	BLACK	D	GREEN	10	394	
111149-1418		HSAL2 12CKT IPM ASSM, STR PLUG-STR PLUG	A	BLACK	D	GREEN	10.8	425	
111149-3421		HSAL2 12CKT IPM ASSM, STR PLUG-STR PLUG	C	BROWN	C	BROWN	2.1	83	
111149-3441		HSAL2 12CKT IPM ASSM, STR PLUG-STR PLUG	C	BROWN	C	BROWN	4.1	161	
111149-4401		HSAL2 12CKT IPM ASSM, STR PLUG-STR PLUG	D	GREEN	C	BROWN	1	39	
111149-4404		HSAL2 12CKT IPM ASSM, STR PLUG-STR PLUG	D	GREEN	C	BROWN	4	158	
111149-4408	AXE34329	HSAL2 12CKT IPM ASSM, STR PLUG-STR PLUG	D	GREEN	C	BROWN	8	315	
111149-4410		HSAL2 12CKT IPM ASSM, STR PLUG-STR PLUG	D	GREEN	C	BROWN	10.5	413	
111149-4415		HSAL2 12CKT IPM ASSM, STR PLUG-STR PLUG	D	GREEN	C	BROWN	15	591	
111149-4416		HSAL2 12CKT IPM ASSM, STR PLUG-STR PLUG	D	GREEN	C	BROWN	16	630	

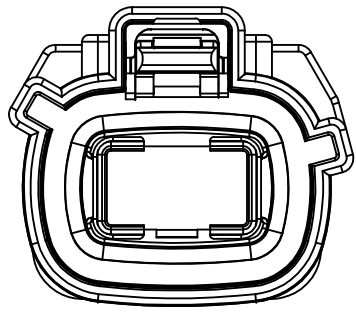


COMPONENT	MATERIAL	FINISH
CABLE	PVC JACKET - BLACK	NA
TERMINALS	COPPER ALLOY	AU + SN PLATED
HOUSINGS	SPS/PAA 20% GLASS FILLED	NA
STRAIN RELIEF	PVC - BLACK	NA
SHIELDING	COPPER ALLOY	NI PLATED

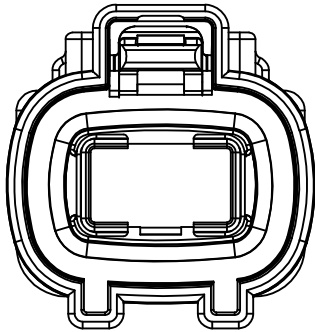


- NOTES:
1. MATERIAL: SEE CHART
  2. FINISH: SEE CHART
  3. PACKAGING SPECIFICATION: PK-111149-001
  4. LEAD FREE, NO RoHS EXEMPTIONS.
  5. IDENTIFICATION LABEL: (2 WRAPS MIN) MUST DISPLAY 'MOLEX', MOLEX PN (xx), CUSTOMER PN (IF AVAILABLE), LENGTH (M), AND DATE CODE (YYYYMMDD-HHMM). WHERE xx REPRESENTS MANUFACTURING LOCATIONS DG OR LR.
  6. CONTINUITY AND HIPOT TESTS TO BE PERFORMED ON ALL HARNESSSES.
  7. ENVIRONMENTAL IN ACCORDANCE WITH R345247, IP67 (-40°C TO 105°C)

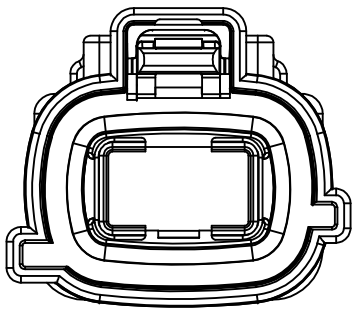
INITIAL RELEASE EC NO. CFC2014-0697 DRAWN BY: J. P. R. DATE: 2013/09/05	QUALITY SYMBOLS	GENERAL TOLERANCES (UNLESS SPECIFIED)	DIMENSION STYLE	SCALE	DESIGN UNITS	THIRD ANGLE PROJECTION
	▽=0	mm INCH	MM/IN	3:1	METRIC	☑
	▽=0	4 PLACES ± .002 3 PLACES ± .005 2 PLACES ± .01 1 PLACE ± .025	DRAWN BY: PGRAY DATE: 2012/11/20 CHECKED BY: CCOX DATE: 2013/01/15 APPROVED BY: DATE:	TITLE	HSAL2 12CKT IPM ASSM STRAIGHT PLUG TO STRAIGHT PLUG	
	ANGULAR ±1/2°	DRAFT WHERE APPLICABLE MUST REMAIN WITHIN DIMENSIONS	MATERIAL NO.	DOCUMENT NO.	SHEET NO.	
			SEE CHART	RSD-111149-005	1 OF 2	
			THIS DRAWING CONTAINS INFORMATION THAT IS PROPRIETARY TO MOLEX, INCORPORATED AND SHOULD NOT BE USED WITHOUT WRITTEN PERMISSION			



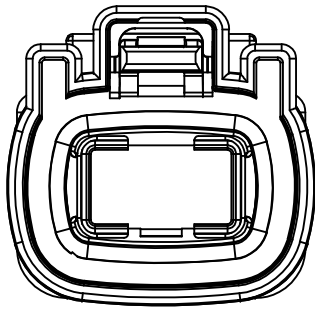
POL A  
COLOR: BLACK



POL B  
COLOR: GRAY



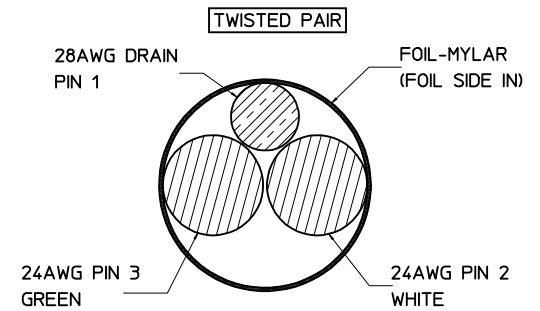
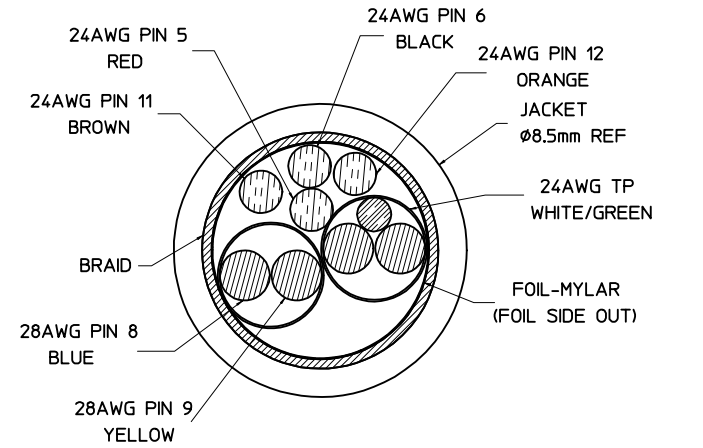
POL C  
COLOR: BROWN



POL D  
COLOR: GREEN

## WIRING DIAGRAM

END 1	COLOR	DESCRIPTION	END 2	DESCRIPTION
PIN 1	NA	IPM LANE SHIELD (DRAIN)	PIN 1	IPM LANE SHIELD (DRAIN)
PIN 2	WHITE	IPM LANE 0+	PIN 2	IPM LANE 0+
PIN 3	GREEN	IPM LANE 0-	PIN 3	IPM LANE 0-
PIN 4	NA	NC	PIN 4	NC
PIN 5	RED	POWER 1	PIN 5	POWER 1
PIN 6	BLACK	GROUND 1	PIN 6	GROUND 1
PIN 7	NA	NC	PIN 7	NC
PIN 8	BLUE	IPM AUX CHANNEL +	PIN 8	IPM AUX CHANNEL +
PIN 9	YELLOW	IPM AUX CHANNEL -	PIN 9	IPM AUX CHANNEL -
PIN 10	NA	NC	PIN 10	NC
PIN 11	BROWN	POWER 2	PIN 11	POWER 2
PIN 12	ORANGE	GROUND 2	PIN 12	GROUND 2
BRD + SHD	NA	BRAID TO SHIELD	SHELL	BRAID TO SHIELD



INITIAL RELEASE EC NO. CPG2014-0697 DRAWN BY: PGRAY CHKD BY: CCOX DATE: 2013/09/05	QUALITY SYMBOLS	GENERAL TOLERANCES (UNLESS SPECIFIED)	DIMENSION STYLE	SCALE	DESIGN UNITS	THIRD ANGLE PROJECTION	
	▽=0	mm INCH	MM/IN	7:1	METRIC		
	▽=0	4 PLACES ±.002 ±.0002	DRAWN BY DATE				
		3 PLACES ±.005 ±.001	PGRAY 2012/11/20	TITLE			
	2 PLACES ±.013 ±.01	CHECKED BY DATE					
	1 PLACE ±.025 ±.005	CCOX 2013/01/15					
	ANGULAR ±1/2°	APPROVED BY DATE					
	DRAFT WHERE APPLICABLE MUST REMAIN WITHIN DIMENSIONS	MATERIAL NO.	SEE CHART	DOCUMENT NO.		SHEET NO.	
				RSD-111149-005		2 OF 2	
		THIS DRAWING CONTAINS INFORMATION THAT IS PROPRIETARY TO MOLEX INCORPORATED AND SHOULD NOT BE USED WITHOUT WRITTEN PERMISSION					