

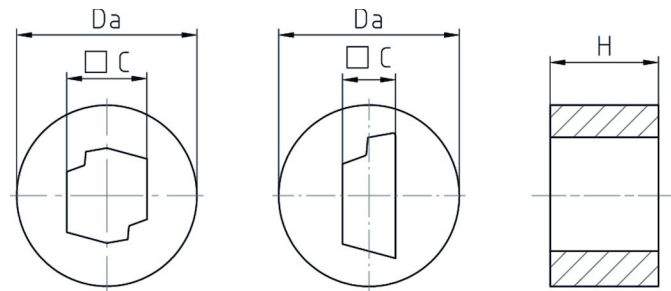
## Sealing insert

WJ-DM xx/ASI/z

Sealing insert	TPE TPS
----------------	---------



Properties	
Temperature range	<ul style="list-style-type: none"> <li>for especially moulded AS-i (Actuator-Sensor-Interface) Bus-cable</li> </ul> -30 °C +100 °C
Comment	assembled in PERFECT series: 50.6xx M/ASI/z, 50.6xx PAzzzzASlz



## Features

1xAS-i Bus-cable cable cross section left

Size	ØC	H	Da	VPE	Part No.
M20	1x AS-i Bus-Leitung	9	15	50	WJ-DM 20/ASI/1
M25	1x AS-i Bus-Leitung	9,3	19,8	50	WJ-DM 25/ASI/1

2x AS-i Bus cable cable cross section twofold

Size	ØC	H	Da	VPE	Part No.
M20	2x AS-i Bus-Leitung	9	15	50	WJ-DM 20/ASI/2*
M25	2x AS-i Bus-Leitung	9,3	19,8	50	WJ-DM 25/ASI/2

\*Sealing insert Ethylene-Propylene rubber EPDM