

MATERIAL

Glass-fibre polyamide based (PA) technopolymer, black colour, glossy finish.

BOSS CAP

Acetal resin based (POM) technopolymer, light-grey colour, push-fit assembly, removable by pressing on the outer edge (ELESA original design).

STANDARD EXECUTION

Black-oxide steel boss, reamed hole.
Assembly by means of a keyway or a transversal pin in the semi-machined hole f or a set screw (redrill and tap hole f).

OTHER EXECUTIONS ON REQUEST

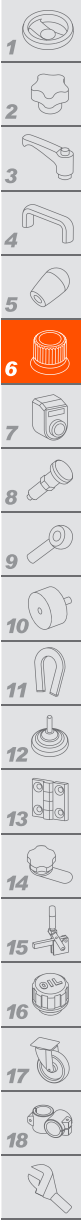
Standard metric holes.

SPECIAL EXECUTIONS ON REQUEST

On the surface of the boss cap words, marks, graphic symbols, etc. can be tampoprinted in colours.

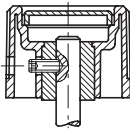
ACCESSORIES ON REQUEST

Ball and spring for clicking operation to be fitted in the assembly hole for knobs with diameter DIA ≥ 1.89 (Ø 48 mm) see ball and spring MS. (see page 713).

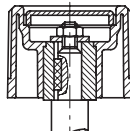


ELESA Original design

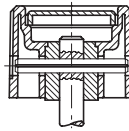
Assembly examples



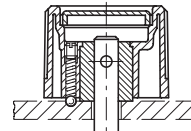
Assembly by means of a set screw



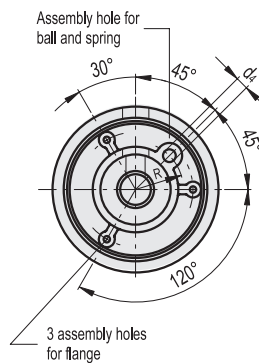
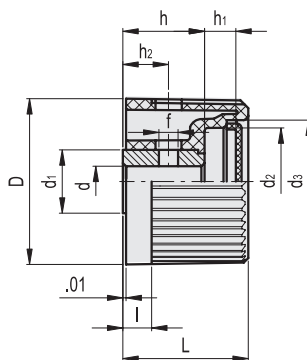
Assembly by means of a keyway



Assembly by means of a transversal pin



Assembly by means of a transversal pin and ball with adjustable pressure spring



INCH

Code	Description	D	d	L	l	d1	d2	d3	d4	h	h1	h2	f	R	⚖
930001	IZN.380/36 A-5/16	1.46	0.312	1.14	0.24	0.59	0.98	1.06	-	0.63	0.39	0.39	0.12	-	0.07
930101	IZN.380/40 A-3/8	1.65	0.375	1.26	0.28	0.71	1.14	1.22	-	0.67	0.43	0.43	0.16	-	0.11
930201	IZN.380/45 A-3/8	1.89	0.375	1.38	0.31	0.87	1.26	1.34	0.13	0.87	0.39	0.55	0.16	0.55	0.19
930301	IZN.380/50 A-1/2	2.05	0.500	1.54	0.35	0.87	1.46	1.54	0.17	0.87	0.51	0.55	0.16	0.59	0.2
930401	IZN.380/56 A-1/2	2.28	0.500	1.61	0.39	1.02	1.65	1.73	0.2	1.06	0.43	0.63	0.2	0.67	0.29
930451	IZN.380/63 A-1/2	2.48	0.500	1.73	0.43	1.02	1.89	1.97	0.24	1.18	0.39	0.63	0.2	0.75	0.34