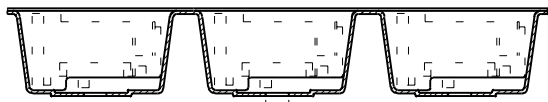
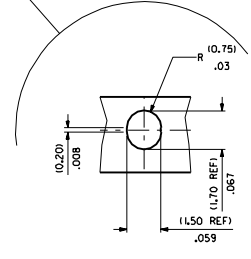
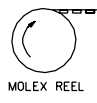


DIRECTION OF UNREELING →



SECTION B - B

TO CUSTOMER ASSEMBLY MACHINE →



NOTES:

- MATERIAL :  
 1) CARRIER TAPE : VOLUME CONDUCTIVE POLYCARBONATE , 10.371 .014 REF THICK , BLACK  
 COVER TAPE : COLD SEAL POLYESTER , 10.061 .002 REF THICK , TRANSPARENT
- PITCH TOLERANCE OVER ANY 10 PITCHES  $\pm 10.21 .008$
- PEEL FORCE OF THE COVER TAPE IS 0.1N TO 1.0N AT A MAXIMUM PEEL SPEED OF 1300I 11.81/min.  $\pm 10\%$
- PACKAGING SPEC. TBA.
- REFERENCE TO IEC 286-3

REFERENCE ONLY

Ø (130.0) MAX  
12.99

Ø 100.0 REF  
3.94

Ø (13.0)  $\pm 0.25$   
±0.25

.512  $\pm .01$

(50.41) MAX  
1.98

99044-3006

(44.4)  $\pm 2.0$   
1.748  $\pm .079$

REEL DIMENSIONS  
DO NOT SCALE

(400) PIECES ON A REEL

(THREE) REELS / CARDBOARD BOX (PCTN-38)

(1200) PIECES IN THE CARDBOARD BOX

FOR PREVIOUS DRAWING ISSUES SEE MRL.	AG	DESIGN	DATE	BY	DAB	REVISE ONLY ON CAD SYSTEM	SHL	REV.	
	DATE	11/15	11/15	11/15	11/15	DATE	11/15	11/15	
	SCALE	5:1	SCALE	5:1	SCALE	5:1	SCALE	5:1	
	FILE	90811-0201	FILE	90811-0201	FILE	90811-0201	FILE	90811-0201	
PART NO.		90811-0201		DATE		11/15		SHEET NO.	
MOLEX EUROPE		MOLEX EUROPE		MOLEX EUROPE		MOLEX EUROPE		MOLEX EUROPE	
SHEET NO.		10F1		DATE		94/11/15		SHEET NO.	
SCALE		5:1		SCALE		5:1		SCALE	
PART NO.		90811-0201		DATE		11/15		SHEET NO.	
MOLEX EUROPE		MOLEX EUROPE		MOLEX EUROPE		MOLEX EUROPE		MOLEX EUROPE	
SHEET NO.		10F1		DATE		94/11/15		SHEET NO.	
SCALE		5:1		SCALE		5:1		SCALE	
PART NO.		90811-0201		DATE		11/15		SHEET NO.	
MOLEX EUROPE		MOLEX EUROPE		MOLEX EUROPE		MOLEX EUROPE		MOLEX EUROPE	