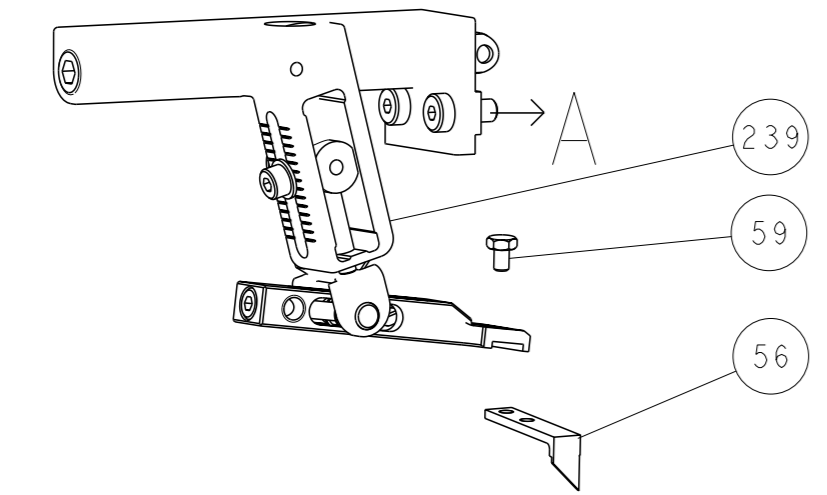


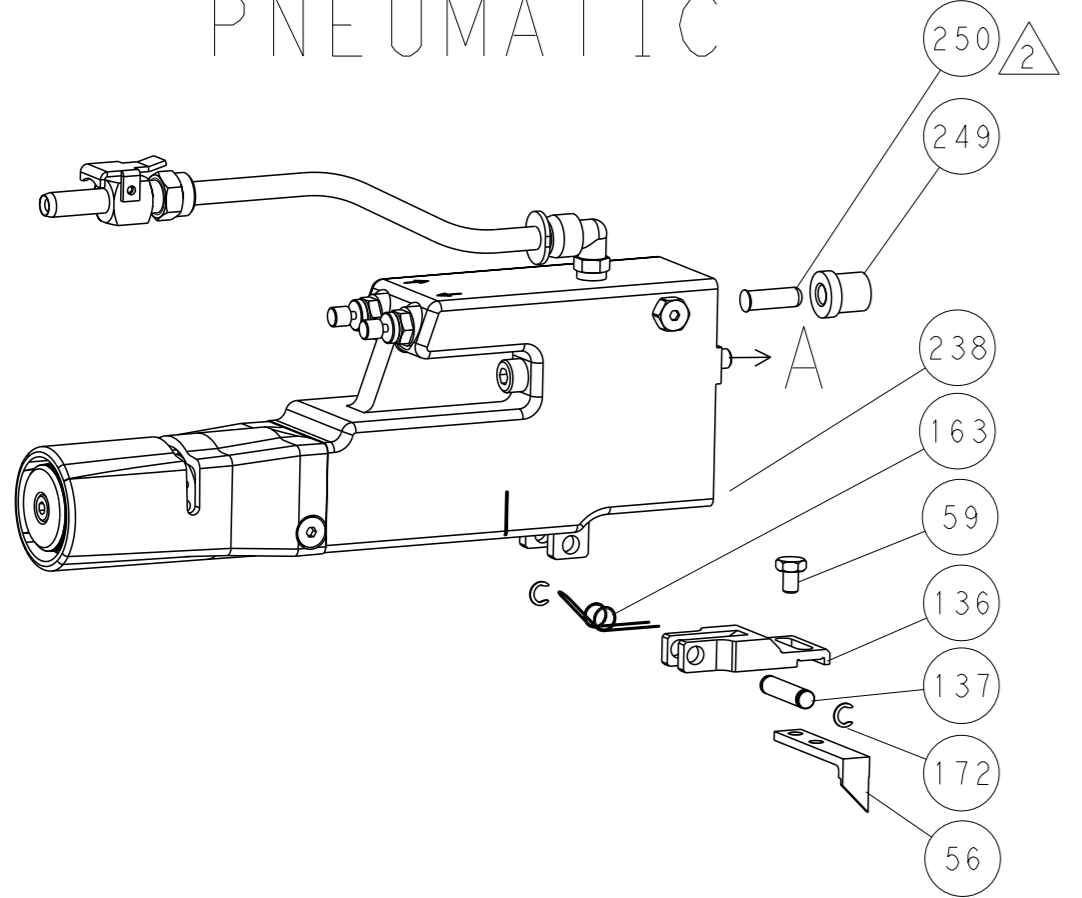


REVISONS		DATE	OWN	APVD
P	LYH			
- SEE SHEET 1				

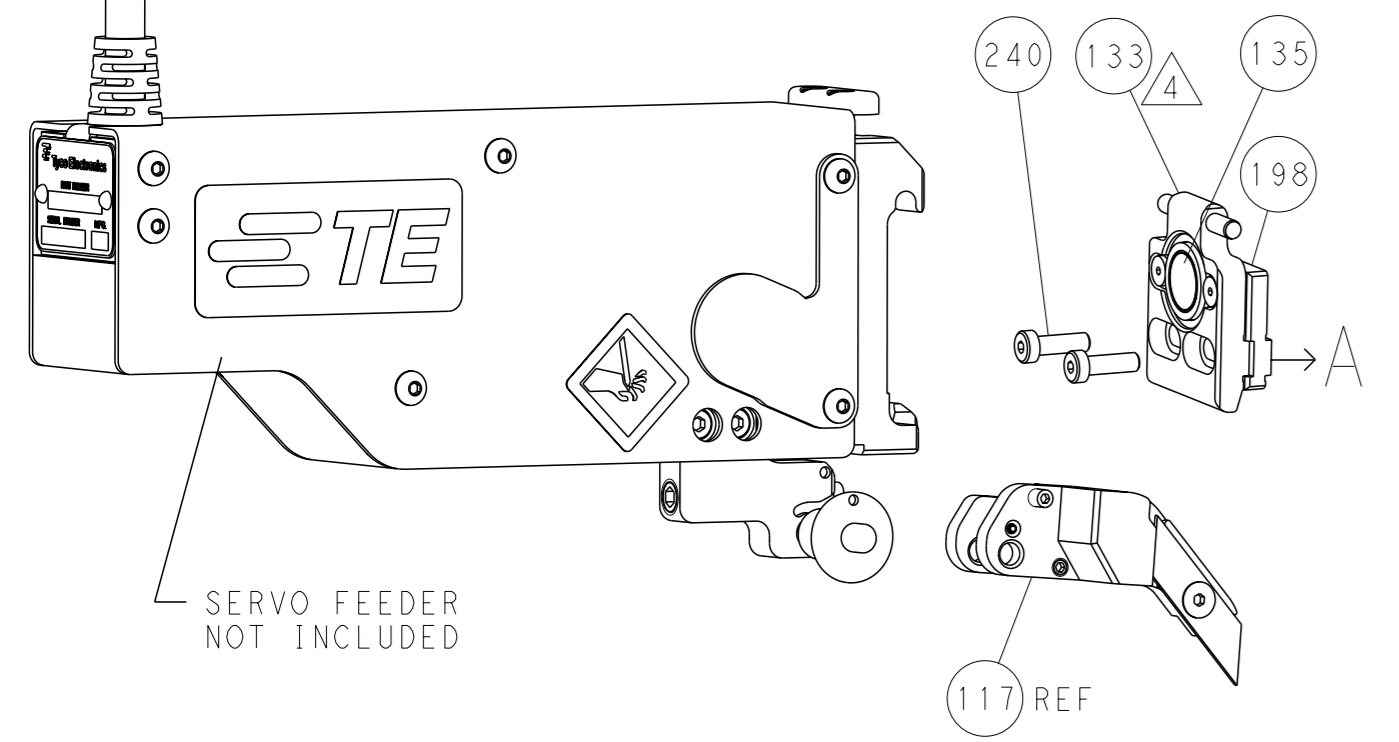
### FEED TYPE MECHANICAL



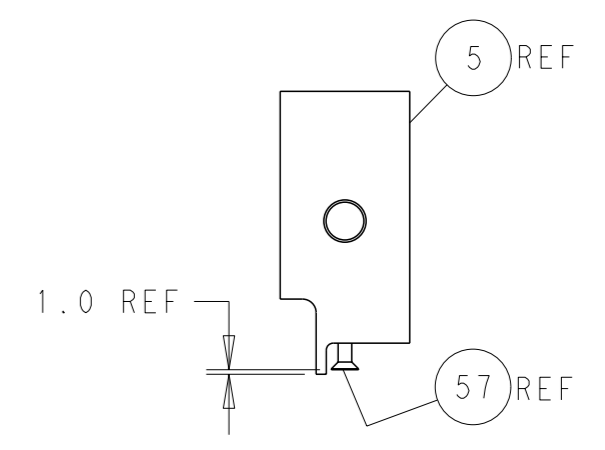
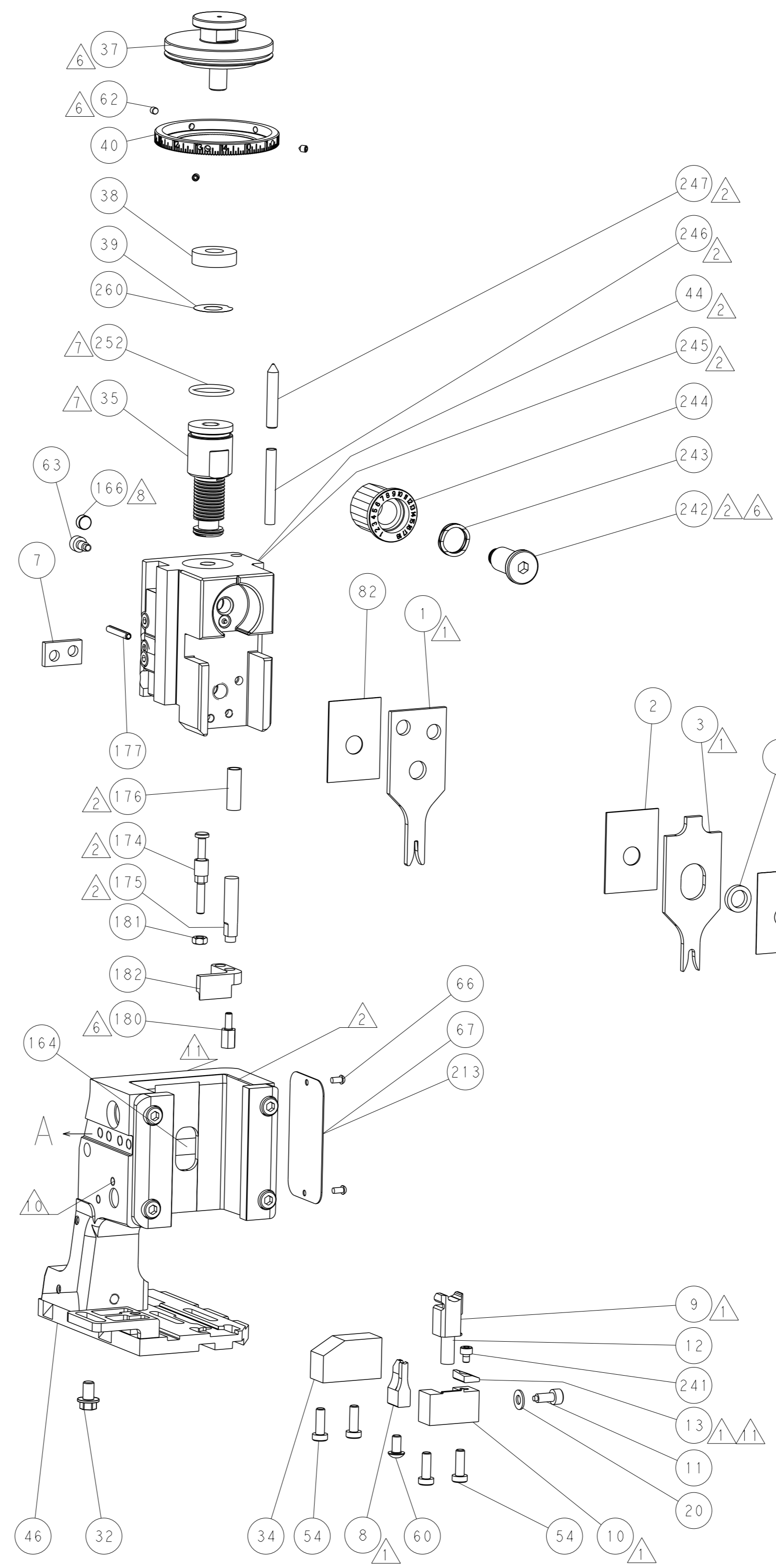
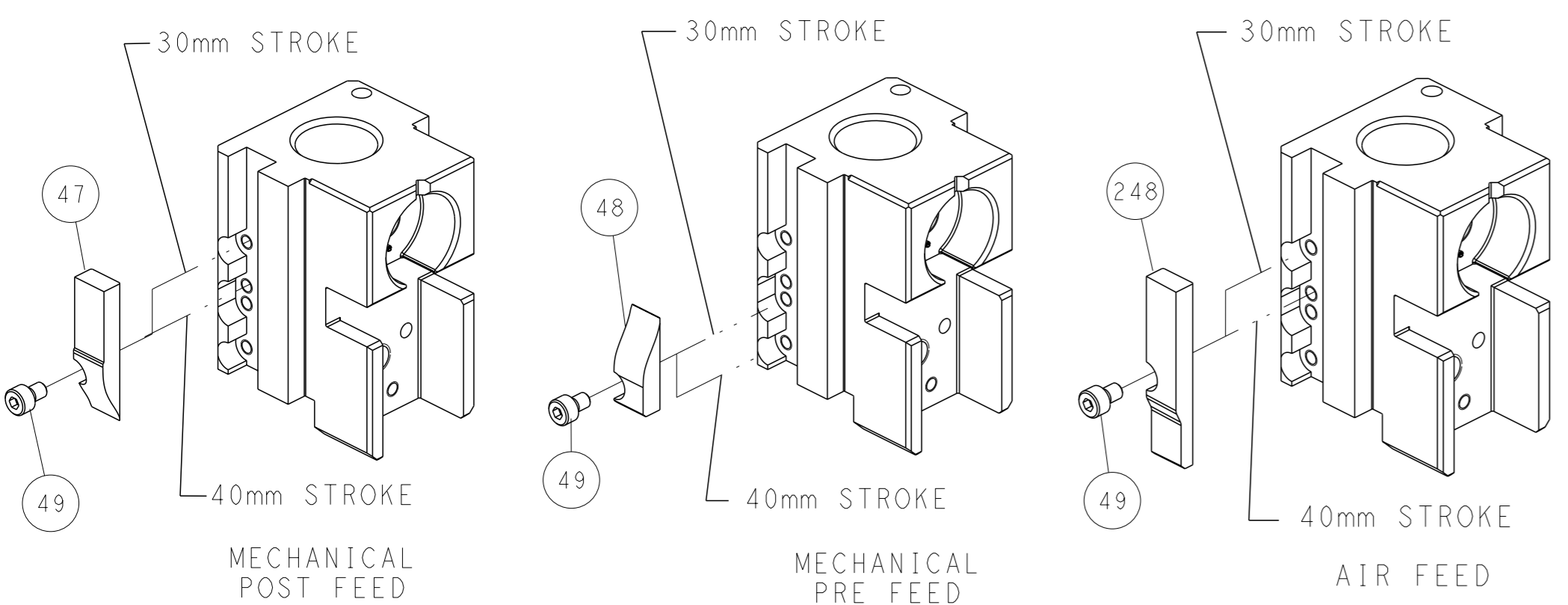
### PNEUMATIC



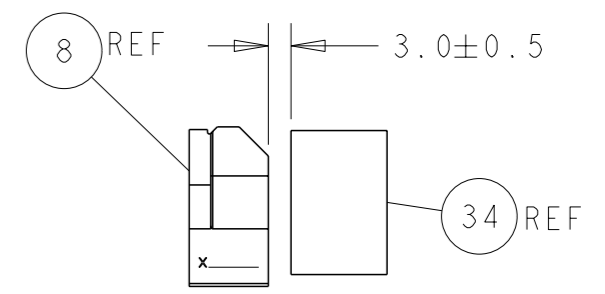
### SERVO LATCH PLATE



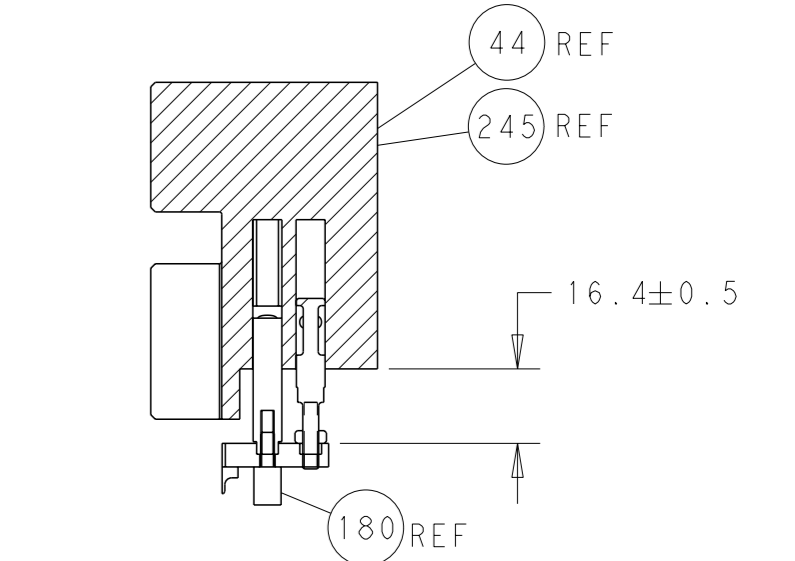
### CAM POSITIONS



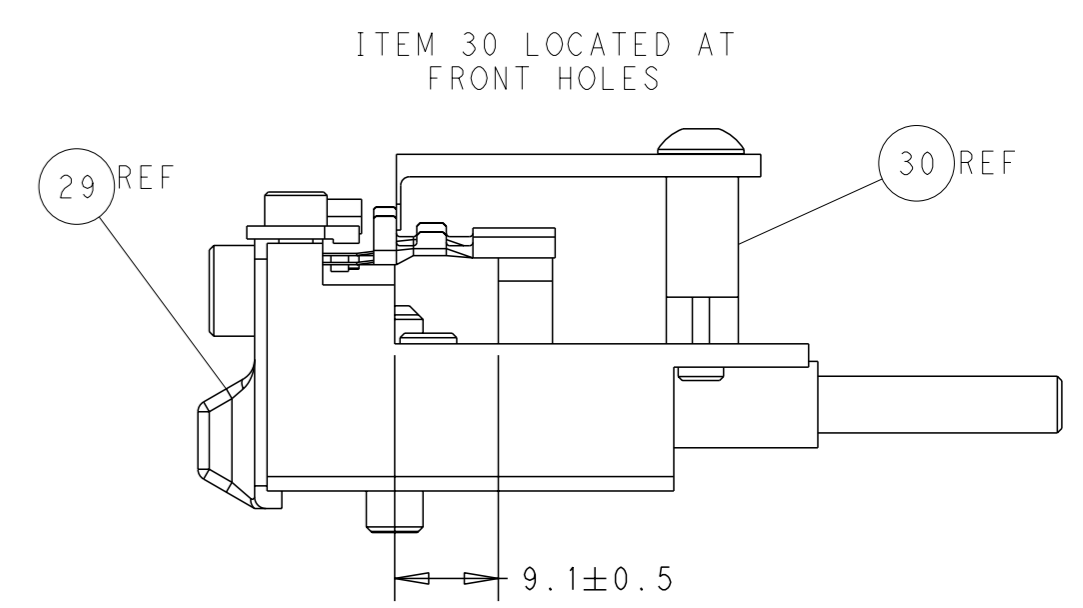
SHEAR DEPRESSOR DETAIL



TERMINAL SUPPORT LOCATION



HOLDDOWN SET-UP



FEED TRACK POSITION GUIDE BY INSULATION BARREL

**ATLANTIC VERSION**  
 Shown on sheets 1 of 4 & 2 of 4  
 (Pacific version shown on sheets 3 of 4 & 4 of 4)

DIMENSIONS: mm TOLERANCES UNLESS OTHERWISE SPECIFIED: 0 PLC ± 1 PLC ± 2 PLC ± 3 PLC ± 4 PLC ± ANGLES FINISH ±		OWN: H. HUANG CHK: L. ZHANG APVD: J. GUO DATE: 20JUN2014 PRODUCT SPEC APPLICATION SPEC WEIGHT: - SCALE: 1:2	NAME: Ocean Side Feed Applicator SIZE: A1 CAGE CODE: 00779 DRAWING NO: C=2266333 SHEET 2 of 4 REV C1	TE Connectivity Harrisburg, PA 17105-3608
--	--	--	---	--

Table with columns: PART NUMBER, REVISION, DESCRIPTION, FEED TYPE. Includes a diagram of the applicator.

APPLICATOR DATA table with columns: CRIMP, SIZE, TYPE. Includes APPLICATOR INSTRUCTIONS 408-10389.

TERMINAL DATA: TE TERMINAL TE CRIMP SPECIFICATION. Includes WIRE STRIP LENGTH, INSULATION DIAMETER RANGE, and TERMINALS APPLIED.

WIRE SIZE, CRIMP HEIGHT mm [INCH], CRIMP HEIGHT REFERENCE SETTING table.

- RECOMMENDED SPARE PARTS
GREASE BEARING SURFACES LIGHTLY
LUBRICATE DAILY PER THE APPLICATOR INSTRUCTION SHEET SUPPLIED WITH THE APPLICATOR.
APPLICATOR SPECIFIC DATA TO BE ENTERED INTO BLANK MEMORY CHIP AT ASSEMBLY.

TERMINAL DATA: TE TERMINAL TE CRIMP SPECIFICATION. Includes WIRE STRIP LENGTH, INSULATION DIAMETER RANGE, and TERMINALS APPLIED.

WIRE SIZE, CRIMP HEIGHT mm [INCH], CRIMP HEIGHT REFERENCE SETTING table.

\*WARNING
ON INSTALLATION, SET WIRE DISC, ITEM 40 TO LARGEST WIRE SIZE SETTING. USE OF SETTINGS BELOW MINIMUM REQUIRED CRIMP HEIGHT SETTING WILL CAUSE DAMAGE TO CRIMP TOOLING.

Table with columns: PART NO, DESCRIPTION, ITEM NO. Lists various components like FINE ADJUST HEAD ASM, PUSH ROD, AIR FEED, etc.

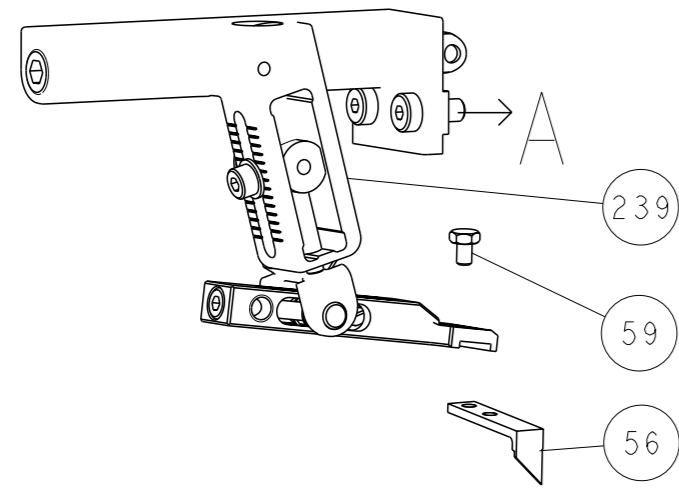
PACIFIC VERSION
Shown on sheets 3 of 4 & 4 of 4
(Atlantic version shown on sheets 1 of 4 & 2 of 4)

SET UP GAUGE 2119599-1, REVISIONS table with columns: P, L, M, DESCRIPTION, DATE, QTN, APVD.

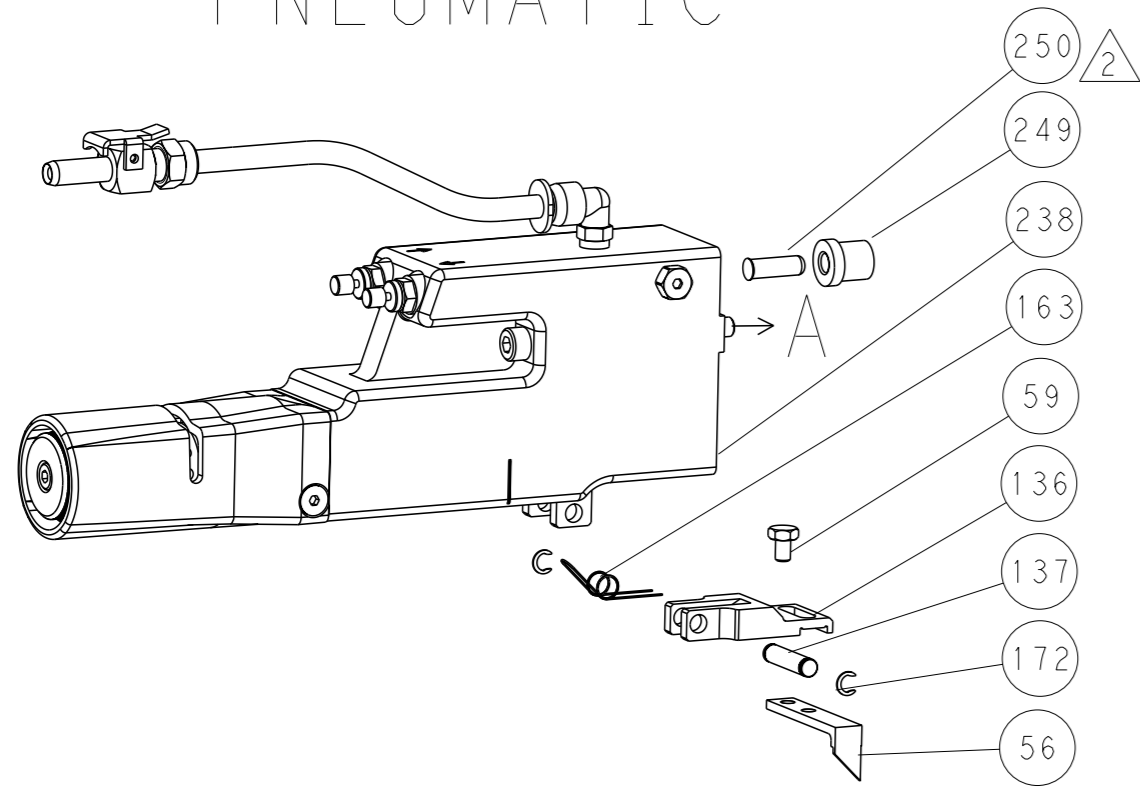
Main parts list table with columns: P, L, M, DESCRIPTION, DATE, QTN, APVD. Lists numerous components like SHCS, MECHANICAL FEED ASSEMBLY, AIR FEED MODULE, etc.

STE logo and company information: TE Connectivity, Harrisburg, PA 17105-3608. Includes Ocean Side Feed Applicator details and drawing specifications.

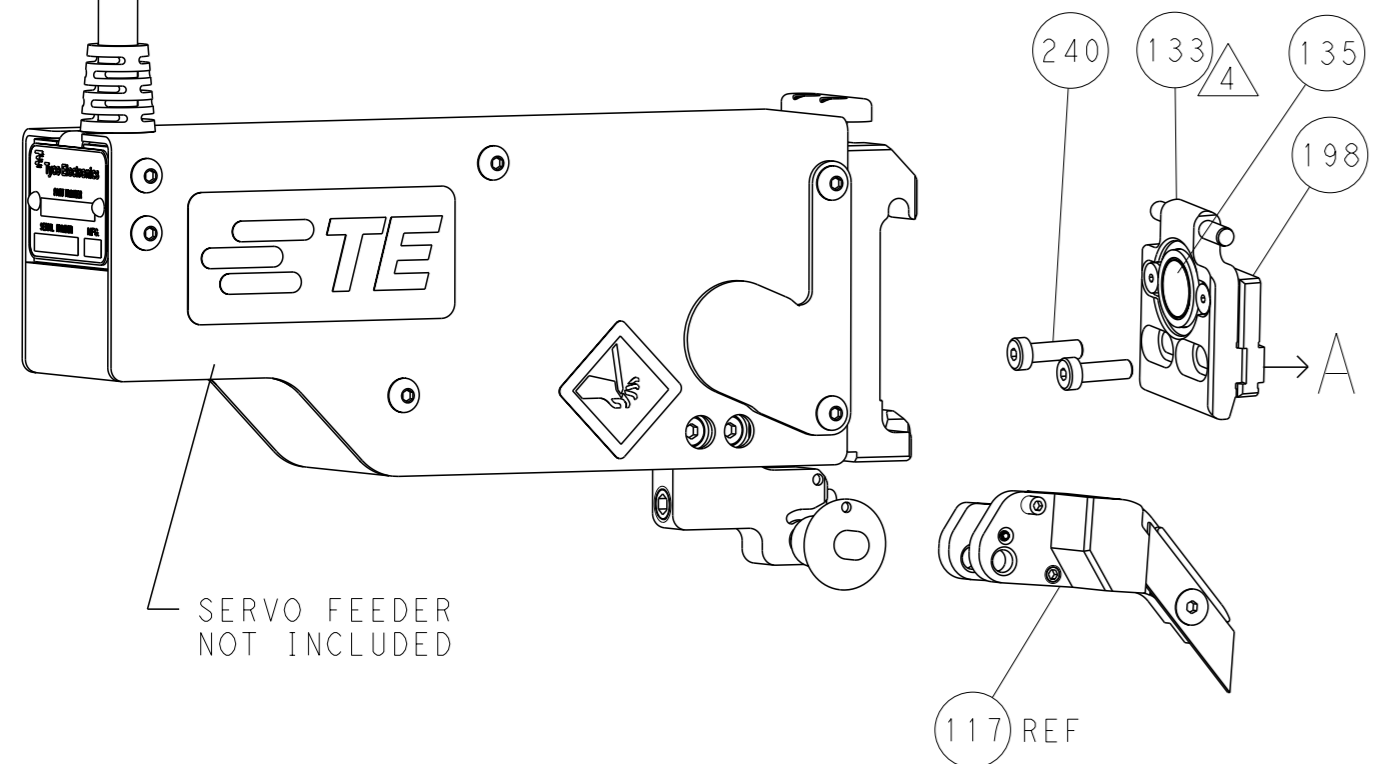
# FEED TYPE MECHANICAL



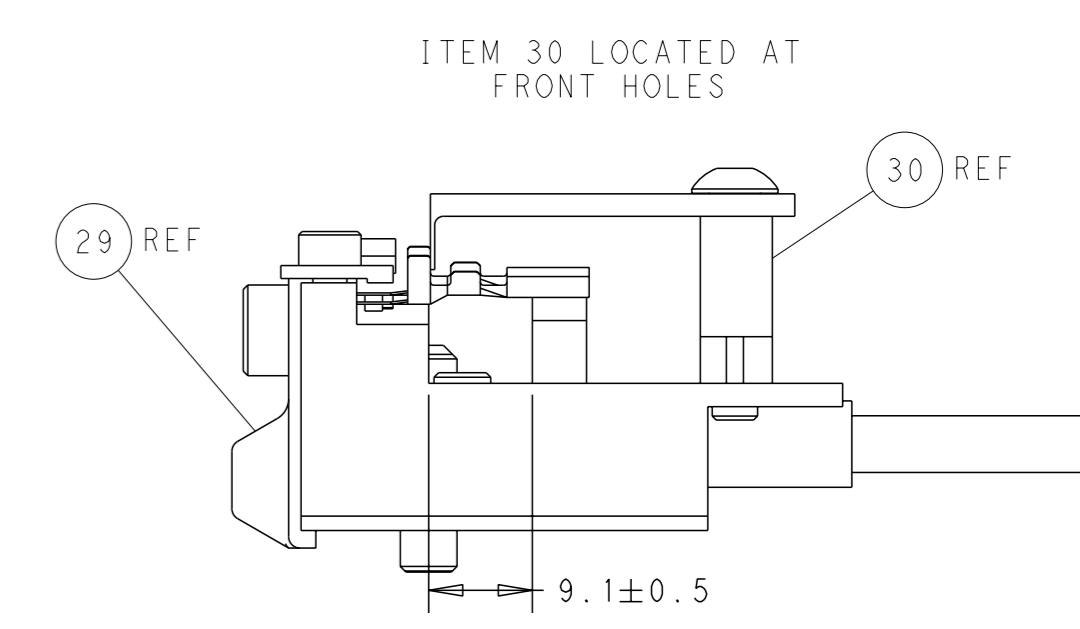
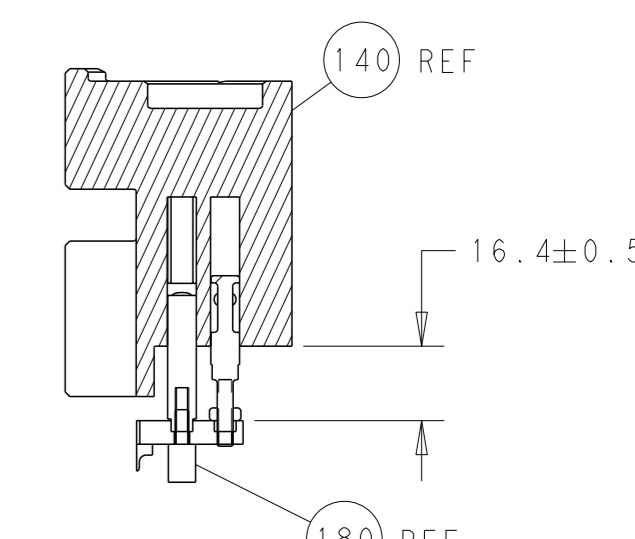
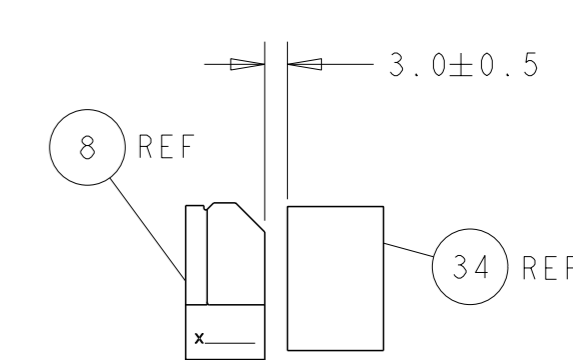
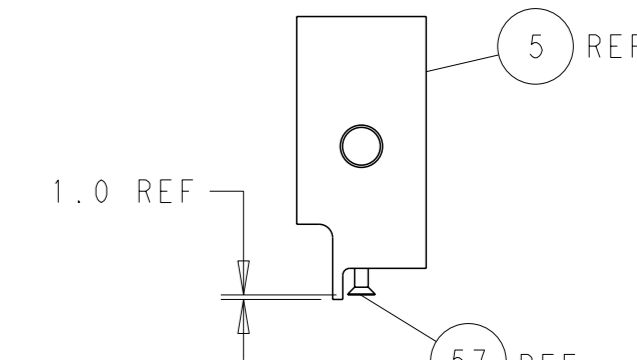
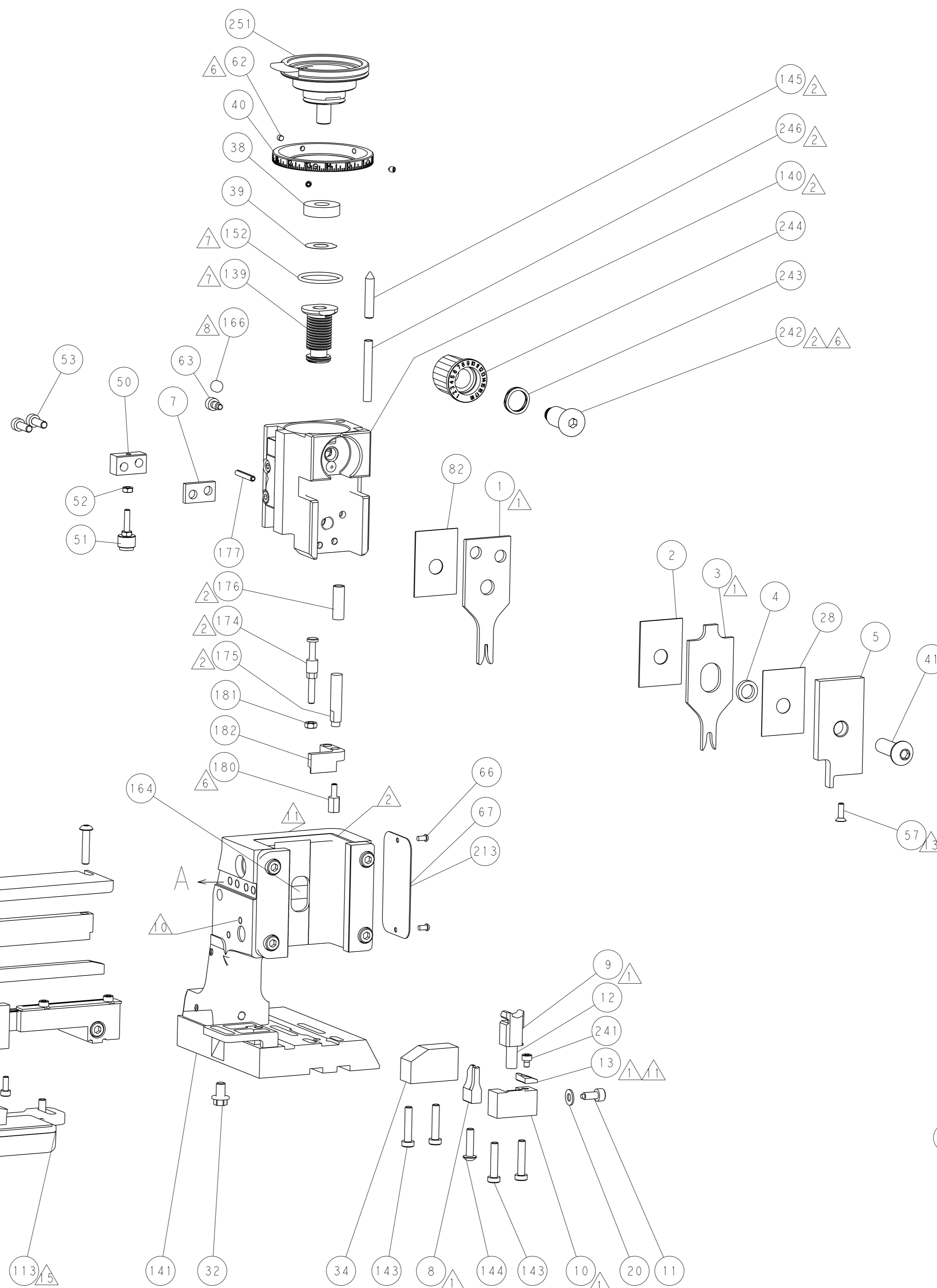
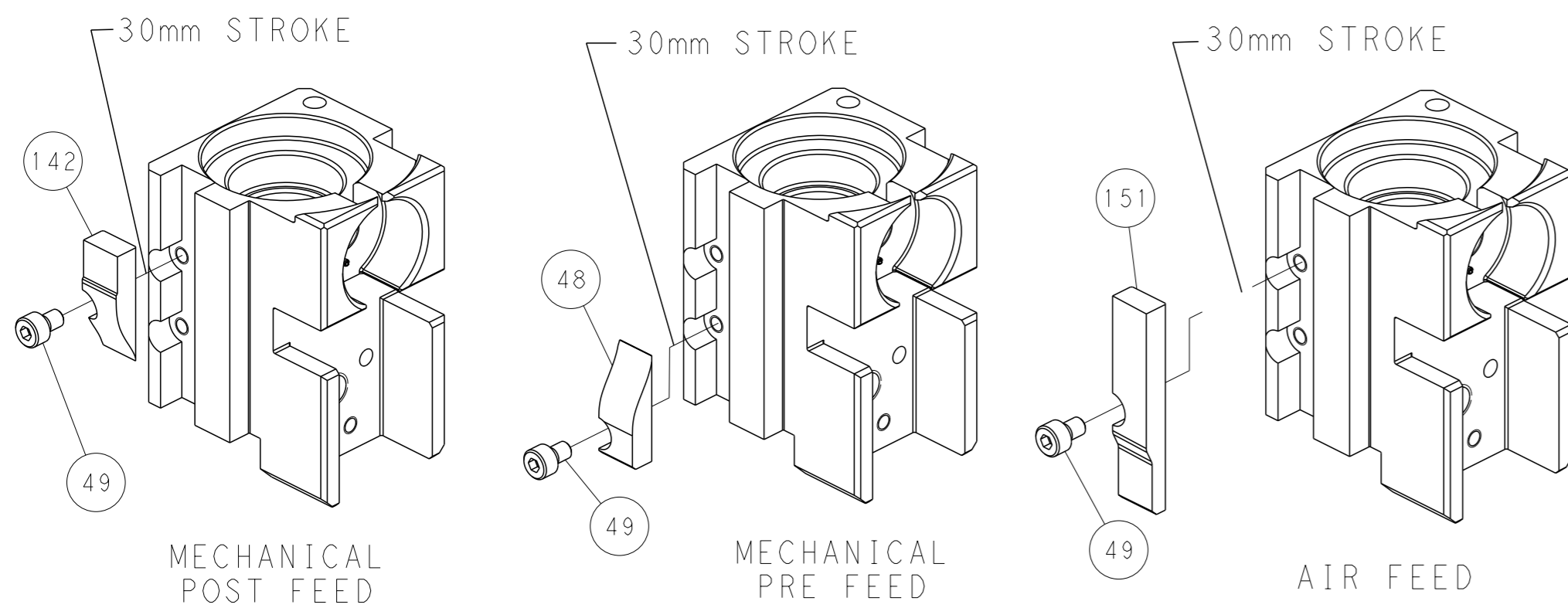
# PNEUMATIC



# SERVO LATCH PLATE



# CAM POSITIONS



**PACIFIC VERSION**  
Shown on sheets 3 of 4 & 4 of 4  
(Atlantic version shown on sheets 1 of 4 & 2 of 4)

DIMENSIONS:		TOLERANCES UNLESS OTHERWISE SPECIFIED:		REVOLUTIONS	
mm	0 PLC	±		LOC	A
	1 PLC	±		DIST	66
	2 PLC	±			
	3 PLC	±			
	4 PLC	±			
	ANGLES	±	°		
	FINISH	±	μm		
MATERIAL				DATE	
				OWN	
				APVD	
				DESCRIPTION	
				SEE SHEET 1	
				DATE	
				OWN	
				APVD	
				NAME	
				Ocean Side Feed Applicator	
				SIZE	
				A1	
				CAGE CODE	
				00779	
				DRAWING NO	
				C=2266333	
				RESTRICTED TO	
				Customer Accessible Production Drawing	
				SCALE	
				1:2	
				SHEET	
				4	
				OF 4	
				REV	
				C1	

SHEETS 1 & 2 ARE NOT REQUIRED FOR PACIFIC VERSION