

WIRE COMBINATIONS FOR NYLON-INSUALTED CLOSED END CONNECTORS

MOLEX P/N: 191600009 (NC-2212), 191600129 (NC-2212BULK)
191600071 (NC-2212T), 191600109 (NC-2212BT)

UL LISTED & CSA CERTIFIED WIRE COMBINATIONS
SOLID OR STRANDED, COPPER WIRE ONLY

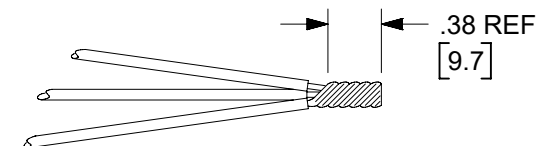
| | 14 AWG | 16 AWG | 18 AWG | 20 AWG | 22 AWG |
|--------|--------|--------|--------|--------|--------|
| (D1) ▽ | 1 | 1 | | | |
| | 1 | | 1 | | |
| | 1 | | 2 | | |
| | 1 | | 1 | 1 | |
| | 1 | | 1 | 2 | |
| | 1 | | 1 | | 1 |
| | 1 | | 1 | | 2 |
| | 1 | | 1 | | 3 |
| | 1 | | | 1 | |
| | 1 | | | 2 | |
| | 1 | | | 3 | |
| | 1 | | | | 1 |
| | | 3 | | | |
| | | 2 | | | |
| ▽ | | 2 | 1 | | |
| | | 2 | 2 | | |
| | | 2 | | 1 | |
| | | 2 | | 2 | |
| | | 2 | | | 1 |
| | | 2 | | | 2 |
| | | 2 | | | 3 |
| | | 2 | 1 | 1 | |
| | | 2 | 1 | | 1 |
| | | 2 | | 1 | 1 |
| | | 1 | | 1 | 2 |
| | | 1 | 1 | | |
| | | 1 | 2 | | |
| | | 1 | 3 | | |
| | | 1 | | 1 | |
| | | 1 | | 2 | |
| | | 1 | | 3 | |
| | | 1 | | 4 | |
| | | 1 | | | 1 |
| | | 1 | | | 2 |
| | | 1 | | | 3 |
| | | 1 | | | 4 |
| | | 1 | | | 5 |

| | 16 AWG | 18 AWG | 20 AWG | 22 AWG |
|-----|--------|--------|--------|--------|
| | 1 | 2 | 1 | |
| | 1 | 2 | | 1 |
| | 1 | 2 | | 2 |
| | 1 | 1 | 1 | 1 |
| | 1 | 1 | 2 | 1 |
| | 1 | 1 | 1 | 2 |
| ▽** | | 5 | | |
| | | 4 | | |
| | | 4 | 1 | |
| | | 4 | | 1 |
| | | 3 | | |
| | | 3 | 2 | |
| | | 3 | | 1 |
| | | 3 | | 2 |
| | | 3 | | 3 |
| | | 3 | 1 | 1 |
| | | 2 | | |
| | | 2 | 1 | |
| | | 2 | 2 | |
| | | 2 | 3 | |
| | | 2 | | 1 |
| | | 2 | | 2 |
| | | 2 | | 3 |
| | | 2 | | 4 |
| | | 2 | | 5 |
| | | 2 | 1 | 1 |
| | | 2 | 1 | 2 |
| | | 2 | 1 | 3 |
| | | 2 | 2 | 1 |
| | | 2 | 3 | 1 |
| | | 2 | 1 | 2 |
| | | 2 | 1 | 3 |
| | | 1 | 1 | |
| | | 1 | 2 | |
| | | 1 | 3 | |
| | | 1 | 4 | |
| | | 1 | 5 | |
| | | 1 | | 1 |
| | | 1 | | 2 |
| | | 1 | | 3 |
| | | 1 | | 4 |

| | 14 AWG | 16 AWG | 18 AWG | 20 AWG | 22 AWG |
|---|--------|--------|--------|--------|--------|
| | | | 1 | 1 | 2 |
| | | | 1 | 1 | 3 |
| | | | 1 | 1 | 4 |
| | | | 1 | 2 | 2 |
| | | | 1 | 2 | 3 |
| | | | 1 | 3 | 2 |
| | | | | 6 | |
| | | | | 5 | |
| | | | | 5 | 1 |
| | | | | 4 | |
| | | | | 4 | 1 |
| | | | | 4 | 2 |
| | | | | 3 | |
| | | | | 3 | 1 |
| | | | | 3 | 2 |
| | | | | 3 | 3 |
| | | | | 2 | |
| | | | | 2 | 1 |
| | | | | 2 | 2 |
| | | | | 2 | 3 |
| | | | | 2 | 4 |
| | | | | 1 | 1 |
| | | | | 1 | 2 |
| | | | | 1 | 3 |
| | | | | 1 | 4 |
| | | | | 1 | 5 |
| | | | | | 6 |
| | | | | | 5 |
| | | | | | 4 |
| | | | | | 3 |
| * | 1 | | | | 2 |
| * | 1 | | | | 3 |
| * | 1 | | | | 4 |
| * | 1 | | 1 | 1 | 1 |

WIRE PREPARATION

NOTE: PRE-TWISTING NOT REQD FOR OEM APPLICATIONS
SOLID: (OEM ONLY)
A. STRIP LEADS TO .38(9.5)
B. INSERT INTO CONNECTOR & CRIMP
STRANDED:
A. STRIP LEADS TO APROX. .75(19.1)
B. TWIST WIRE COMBINATION EVENLY & TIGHT.
C. TRIM STRIPPED PRE-TWISTED ZONE TO .38(9.5).
D. INSERT INTO CONNECTOR AND CRIMP.



RATING 105°C 600 VOLT
(1000 VOLT IN SIGNS OR FIXTURES)
FILE: E32244



RATING 105°C 600 VOLT
(1000 VOLT IN SIGNS OR FIXTURES)
FILE: LR 18689
* 125°C FOR PRE-TWISTED WIRE ONLY

APPLICATION WITH HANDTOOL:

HOLD TOOL WITH LOCATOR PLATE FACING UP.
INSERT CLOSED END CONNECTOR IN HOLE.
INSURE THAT SHOULDER OF CONNECTOR IS RESTING ON LOCATOR PLATE.
CLOSE TOOL JAWS UNTIL CONNECTOR IS HELD SNUG IN PLACE.
LOAD CONNECTOR WITH DESIRED WIRE COMBINATION.
COMPLETE CRIMP BY CLOSING TOOL HANDLES UNTIL THEY RELEASE.

CRIMP TOOLING AVAILABLE

192280030 (ATP-301) AIR TAPE PRESS OR
638853500 MINI-MAC TAPE APPLICATOR WITH
192880239 (ATP-NC-2212) CRIMPING DIES

(D1)

640010900 (RHT-7050) HANDTOOL
640050900 (AT-7050) CRIMP HEAD OR 640053600 (AT-2212) CRIMP HEAD
FOR 192790001 (AT-200) AIR HAND TOOL

* - CSA CERTIFIED ONLY

** - UL LISTED ONLY

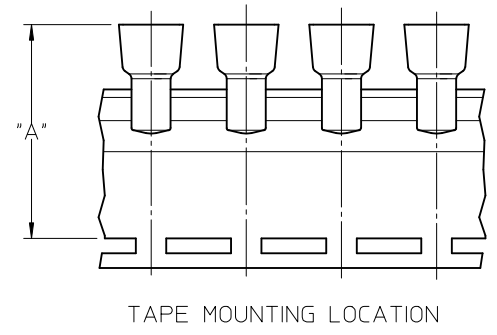
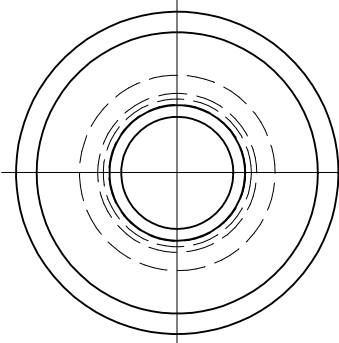
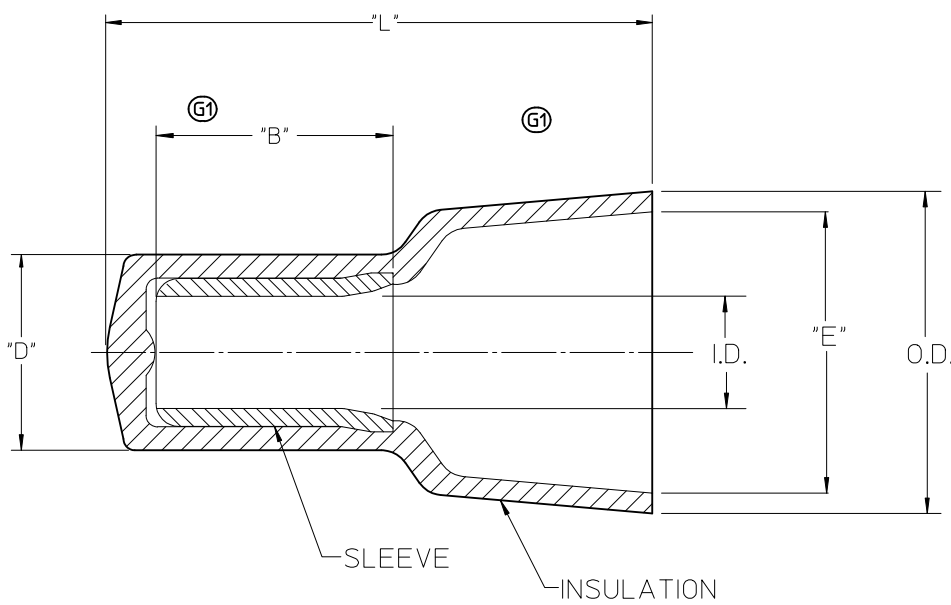
▽ - STRANDED WIRE ONLY

NOTE: THIS DOCUMENT USED TO MAKE STUFFER SHEET
PART NO: 194080109
DOC NO'S: E-19160-009 & PK-19408-109

| | | | | | | | |
|--|---|------------------------|---|-----------------|---------------------------|--------------------------|--------------|
| FUNCTIONAL SYMBOLS FA = 0 FE = 0 FP = 0 | THIS DRAWING CONTAINS INFORMATION THAT IS PROPRIETARY TO MOLEX ELECTRONIC TECHNOLOGIES, LLC AND SHOULD NOT BE USED WITHOUT WRITTEN PERMISSION | | CURRENT REV DESC: WIRE COMBO: (1) 14 AWG + (1) 16 AWG "STRANDED" ONLY WAS "STRANDED OR SOLID". CRIMP TOOLING P/N'S UPDATED. | | | | |
| | DIMENSION UNITS | SCALE | | | | | |
| | INCH/MM | NTS | GENERAL TOLERANCES (UNLESS SPECIFIED) | | EC NO: 704038 | | |
| | | | MM | INCH | 4 PLACES ± | DRWN: DMYRICK 2022/04/07 | |
| DIVISIONAL SYMBOLS | | | | 3 PLACES ± | CHKD: JMACNEIL 2022/05/04 | | |
| | | | | 2 PLACES ± | APPR: JMACNEIL 2022/05/04 | | |
| | | | | 1 PLACE ± | INITIAL REVISION: | | |
| | | | | 0 PLACES ± | DRWN: | | |
| | | | | ANGULAR TOL ± ° | APPR: | | |
| DRAFT WHERE APPLICABLE MUST REMAIN WITHIN DIMENSIONS | | THIRD ANGLE PROJECTION | DRAWING | SERIES | MATERIAL NUMBER | CUSTOMER | SHEET NUMBER |
| | | | B-SIZE | 19160 | 191600009 | GENERAL MARKET | 1 OF 1 |

| | | | |
|--|----------|----------|----------|
| CLOSED END CONNECTOR WIRE COMBINATNS NC-2212 PRODUCT SPECIFICATION | | | |
| PRODUCT CUSTOMER DRAWING | | | |
| DOCUMENT NUMBER | DOC TYPE | DOC PART | REVISION |
| PS-19160-006 | PSD | 001 | D1 |

| LOOSE PIECE | | TAPE MOUNTED | | "L" MAX. | "B" MIN (G1) | "D" MAX. | "E" MIN. | I.D. MIN. | O.D. MAX. | "A" DIM ±.02/0.5 (G1) |
|--------------|----------|--------------|----------|-----------|--------------|----------|----------|-----------|-----------|-----------------------|
| MATERIAL NO. | ENG. NO. | MATERIAL NO. | ENG. NO. | | | | | | | |
| 191600012 | NC-2214 | 191600070 | NC-2214T | .62/15.7 | .30/7.6 | .19/4.8 | .24/6.1 | .09/2.3 | .32/8.1 | 1.54/39.2 |
| 191600009 | NC-2212 | 191600071 | NC-2212T | .76/19.3 | .30/7.6 | .23/5.8 | .27/6.9 | .10/2.5 | .36/9.1 | 1.63/41.4 |
| 191600002 | NC-1610 | 191600083 | NC-1610T | .90/22.8 | .28/7.1 | .28/7.1 | .38/9.6 | .15/3.8 | .45/11.4 | 1.75/44.5 |
| 191600024 | NC-8 | 191600028 | NC-8T | 1.10/27.9 | .42/10.6 | .36/9.1 | .48/12.2 | .21/5.3 | .57/14.5 | 1.86/47.4 |



NOTES:

- MATERIAL: SLEEVE: TIN-PLATED COPPER
INSULATION: 6/6 NYLON,
NATURAL TRANSLUCENT
- PARTS ARE ROHS COMPLIANT.

SALES DRAWING

| | | | | | | |
|--|----------------------|--|--------------------|-------|--------------|--|
| CORRECT TOLERANCES EC NO: WNA2010-0673 DRAWN BY: DR. W. H. THRODAHL 2010/05/07 CHKD. R. DEROSS 04/02/23 APPR: JMACEIL 2010/06/23 | QUALITY SYMBOLS | GENERAL TOLERANCES (UNLESS SPECIFIED) | DIMENSION STYLE | SCALE | DESIGN UNITS | THIRD ANGLE PROJECTION |
| | ▽=0 | mm INCH | IN/MM | 5:1 | INCH | |
| | ▽=0 | 4 PLACES ± --- ± --- | DRAWN BY DATE | | | |
| | | 3 PLACES ± --- ± --- | H. BEITZE 04/02/23 | TITLE | | |
| | 2 PLACES ± --- ± --- | CHECKED BY DATE | | | | CLOSED END CONNECTORS NYLON INSULATED |
| | 1 PLACE ± --- ± --- | R. DEROSS 04/02/23 | | | | |
| | ANGULAR ± ---° | APPROVED BY DATE | | | | MOLEX INCORPORATED |
| | | R. DEROSS 04/02/23 | | | | |
| | | DRAFT WHERE APPLICABLE MUST REMAIN WITHIN DIMENSIONS | SEE CHART | | | DOCUMENT NO. SD-19160-001 |
| | | | SIZE B | | | SHEET NO. 1 OF 1 |