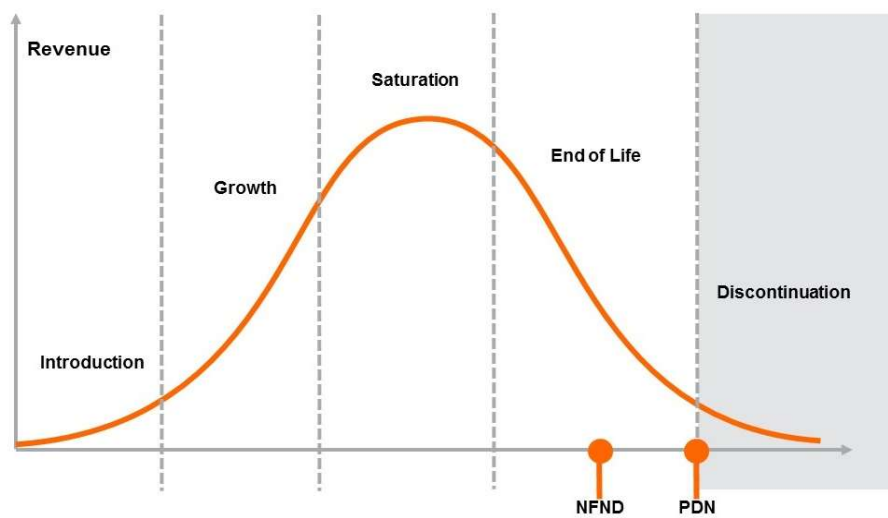


Light is OSRAM

Product Or Individual Q-Code Discontinuation (acc. JEDEC J-STD-048)
OS-PDN-2022-090

01 December 2022

Last order:	01 January 2023
Last delivery:	01 April 2023



Please direct your feedback to your local Sales office.

DISCONTINUED				NEW (REPLACEMENT)		
Device	Ordering Code	Brand	Reason for discontinuation	Device	Datasheet Ordering Code	Brand
GW JDSTS2.EM-H6H8-XX33-1-65-B-2-R33-XX	Q65112A9464	DURIS	Consolidation of device with similar performance	No replacement		
GW JDSTS2.EM-H6H8-XX35-1-65-B-2-R33-XX	Q65112A9465	DURIS	Consolidation of device with similar performance	No replacement		
GW JDSTS2.EM-H5H7-XX36-1-65-B-2-R33-XX	Q65112A9466	DURIS	Consolidation of device with similar performance	No replacement		
GW JDSTS2.EM-H4H6-XX37-1-65-B-2-R33-XX	Q65112A9467	DURIS	Consolidation of device with similar performance	No replacement		
GW JDSTS2.EM-H4H7-XX37-K2L1-65-B-2-R33-X	Q65112A9656	DURIS	Consolidation of device with similar performance	No replacement		
GW JDSTS2.EM-H5H8-XX36-K2L1-65-B-2-R33-X	Q65112A9657	DURIS	Consolidation of device with similar performance	No replacement		
GW JDSTS2.EM-H5H6-A131-1-65-B-2-R33-XX	Q65112A9697	DURIS	Consolidation of device with similar performance	No replacement		
GW JDSTS2.EM-H5H6-XX36-1-65-B-2-R33-XX	Q65113A0213	DURIS	Consolidation of device with similar performance	No replacement		
GW JDSTS2.EM-H6H8-XX53-1-65-B-2-R33-AP	Q65113A1751	DURIS	Consolidation of device with similar performance	No replacement		