

SPICE-Equivalent circuit model library

Table 1. Equivalent circuit data

Part Number	L (μH)	F _{res} (MHz)	C1 (pF)	R1 (Ω)	R2 Nominal DCR of winding (Ω)
MPIA4020V2-R10-R	0.1	239.6	4.41	387.51	0.0035
MPIA4020V2-R22-R	0.22	154.1	4.85	728.14	0.0055
MPIA4020V2-R33-R	0.33	122.8	5.09	1007.14	0.0075
MPIA4020V2-R47-R	0.47	100.7	5.31	1336.46	0.011
MPIA4020V2-R56-R	0.56	91.3	5.43	1537.55	0.012
MPIA4020V2-R68-R	0.68	81.9	5.55	1795.92	0.013
MPIA4020V2-1R0-R	1	66.0	5.82	2445.00	0.02
MPIA4020V2-1R2-R	1.2	59.6	5.94	2828.94	0.023
MPIA4020V2-1R5-R	1.5	52.6	6.11	3381.83	0.025
MPIA4020V2-2R2-R	2.2	42.4	6.39	4594.28	0.04
MPIA4020V2-3R3-R	3.3	33.8	6.71	6354.63	0.071
MPIA4020V2-4R7-R	4.7	27.7	7.00	8432.52	0.098
MPIA4020V2-6R8-R	6.8	22.6	7.32	11331.46	0.17
MPIA4020V2-100-R	10	18.2	7.67	15426.91	0.25
MPIA4020V2-150-R	15	14.5	8.05	21337.91	0.32
MPIA4020V2-220-R	22	11.7	8.43	28987.92	0.35

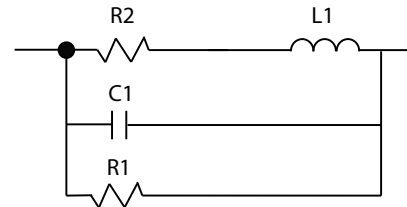


Figure 1. Equivalent circuit

Disclaimer

The data provided is for reference and is intended for evaluation purposes only. Users should verify all intended results in the end application.

Eaton
Electronics Division
 1000 Eaton Boulevard
 Cleveland, OH 44122
 United States
www.eaton.com/electronics

© 2018 Eaton
 All Rights Reserved
 Printed in USA
 Publication No. MPIA4020V2 Spice
 April 2018