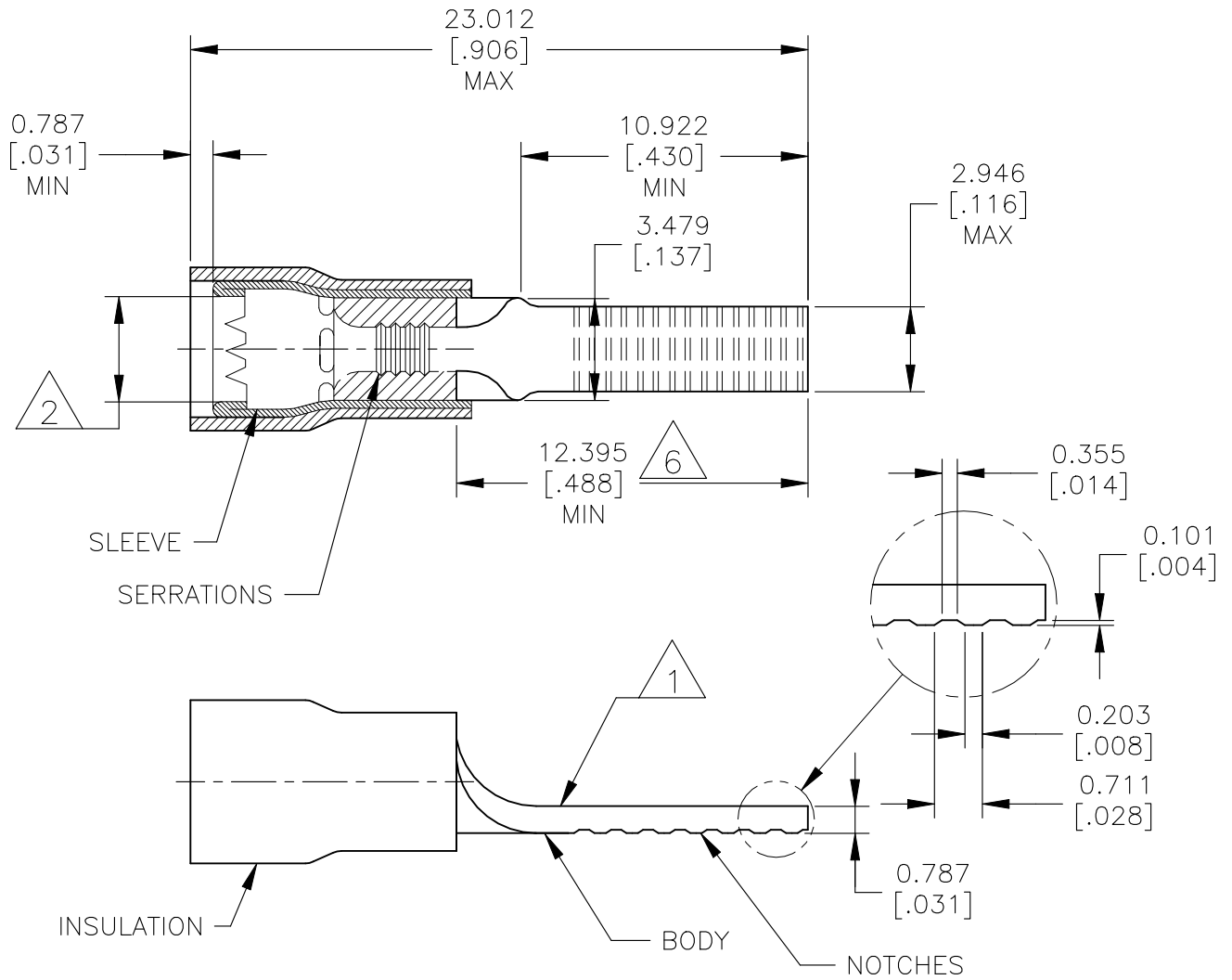


REVISIONS					
P	LTR	DESCRIPTION	DATE	DWN	APVD
	D2	REDRAWN/REV PER ECN-21-128113	29NOV2021	GSK	CSD



1 STAMP AMP 22-16 APPROX AS SHOWN.

2 WIRE INSULATION  $\phi 2.692-3.581[\phi .106-.141]$

3 BODY MATERIAL THICKNESS  $0.787 \pm 0.050[.031 \pm .002]$

4 MATERIAL : COPPER PER ASTM B152.

5 FINISH : TIN PLATED PER ASTM B545 MIN  
EXT. THK.  $0.00254[.000100]$ .

6 DIMENSION APPLIES FROM EDGE  
OF METAL WIRE BARREL

1000	LOOSE PIECE	131331
QTY	PACKAGE TYPE	PART NO

TE Connectivity. All Rights Reserved.

1  
©

DIMENSIONS: mm [INCHES]	DWN RAVI S 20JUN2017	MATERIAL 4	FINISH 5
	CHK ROHDE DANIEL 20JUN2017	TE Connectivity	
TOLERANCES UNLESS OTHERWISE SPECIFIED: REMOVE BURRS, BREAK SHARP EDGES $\frac{1}{4}$ R MAX	APVD ROHDE DANIEL 20JUN2017		
	PRODUCT SPEC -	SIZE A4	CAGE CODE 00779
0 PLC $\pm -$ 1 PLC $\pm -$ 2 PLC $\pm -$ 3 PLC $\pm 0.127[.005]$ 4 PLC $\pm -$ ANGLES $\pm 5^\circ$	APPLICATION SPEC 114-2157	RESTRICTED TO -	
	WEIGHT	CUSTOMER DRAWING	SCALE 6:1 SHEET 1 OF 1 REV D2