

Light is OSRAM

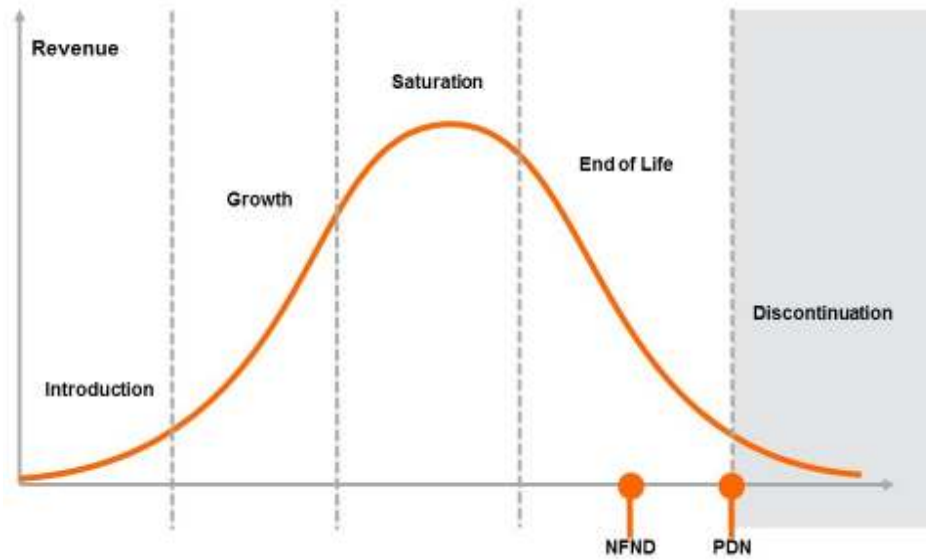
Product Or Individual Q-Code Discontinuation (acc. JEDEC J-STD-048)  
OS-PDN-2019-011

15-May-2019

---

**Last order:** 15-Nov-2019  
**Last delivery:** 15-May-2020

---



Please direct your feedback to your local Sales office.

DISCONTINUED				NEW (REPLACEMENT)		
Device	Ordering Code	Brand	Reason for discontinuation	Device	Datasheet Ordering Code	Brand
LUW H9GP.CE-KZLX-IMK-8F8G-350-R18-Z-HAN	Q65111A9821	OSLON	Too high voltage groups	LUW H9GP.CE-KYLY-EMKM-1-350-R18-Z	Q65111A1881	OSLON
LT L29S-Q2R2-35-0-10-R18-Z-HE	Q65112A0914	SMARTLED	No sufficient future volume forecast	LT L29S-N1R2-25-0-10-R18-Z	Q65110A3218	SMARTLED
LCB T67S-Q1R1-2J3K-0-10-R18-Z-HE	Q65112A0989	TOPLED	No sufficient future volume forecast	LCB T67S-P2R2-2J8L-1-10-R18-Z	Q65112A2688	TOPLED

## ***Products Affected by Product Discontinuation Notification***

**Number:** OS-PDN-2019-011

**Name:** Product Discontinuation

**Release Date:** 5/15/2019

**Last Order:** 11/15/2019

**Last Delivery:** 5/15/2020

### ***DISCONTINUED***

### ***NEW (REPLACEMENT)***

<b><i>Product</i></b>	<b><i>QNumber</i></b>	<b><i>QNumber Description</i></b>	<b><i>Part Number</i></b>	<b><i>Product</i></b>	<b><i>QNumber</i></b>	<b><i>QNumber Description</i></b>	<b><i>Part Number</i></b>
LCB T67S	Q65112A0989	LCB T67S-Q1R1-2J3K-0-10-R18-Z-HE	LCB T67S-Q1R1-2J3K-Z-HE	LCB T67S	Q65112A2688	LCB T67S-P2R2-2J8L-1-10-R18-Z	
LT L29S	Q65112A0914	LT L29S-Q2R2-35-0-10-R18-Z-HE	LT L29S-Q2R2-35-Z-HE	LT L29S	Q65110A3218	LT L29S-N1R2-25-0-10-R18-Z	LT L29S-N1R2-25-Z
LUW H9GP.	Q65111A9821	LUW H9GP.CE-KZLX-IMK-8F8G-350-R18-Z-H	LUW H9GP.CE-KZLX-IMK-8F8G-Z-H	LUW H9GP.	Q65111A1881	LUW H9GP.CE-KYLY-EMKM-1-350-R18-Z	LUW H9GP.CE-KYLY-EMKM-1-Z