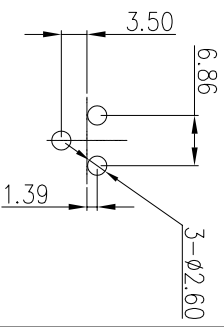
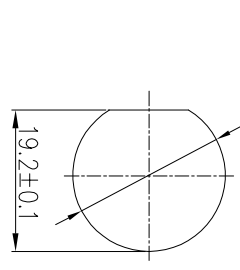


REV.	EN. NO.	DESCRIPTION	SIGN	DATE
C1	N/A	INITIAL DRAWING	Liu	2019/08/13

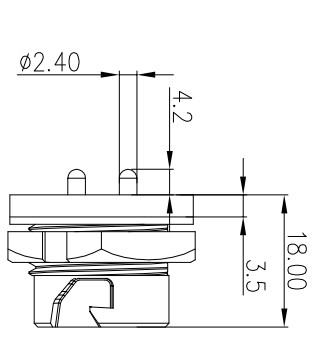


3 Pin

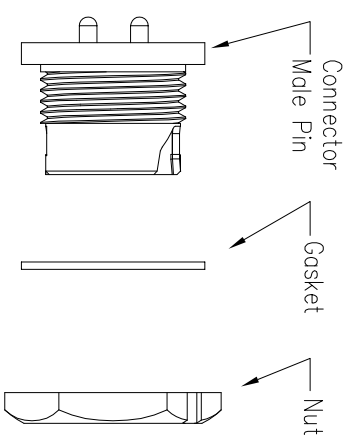
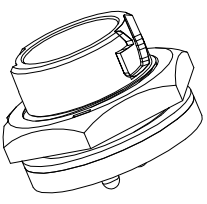
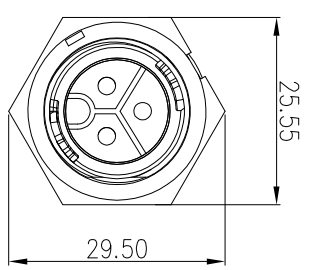
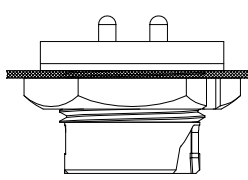
PCB Layout



Recommended Panel Cut-Out



Panel T: Max 2.5

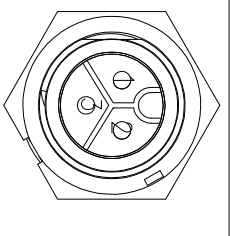


Specification:

1. Operation Temperature: -45°C~105°C.
2. Insulation Resistance: 100MΩ at DC500V.
3. Contact Resistance: <10mΩ.
4. Withstand Voltage: 2000V AC
5. Operating Current: 20A
6. Operating Voltage: AC 300V
7. Waterproof Rate: IP67 (Mated)
8. Housing: Nylon, Black
9. Male Pin: Copper Alloy, Gold Plated
10. Gasket: Silicon Gray
11. Panel Nut: Nylon, Orange
12. Torque Rate: 0.8~1.0N•m
13. RoHS Compliant.
14. Mating Cap P/N: 806-00047-00

23XXX535-02

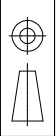
Pin Number



2 Pin

P/N: 23003535-02

Pin Assignments  
Front View



UNIT: mm

TOLERANCE	ANGLE
.X	±0.25
.XX	±0.15
.XXX	±0.05
ANGLES	±1°

Middle Series Push Lock Front  
Mount With Male Pin(PCB)

DESCRIPTION	SCALE	SIZE	SHEET	OF
	1:1	A4	1	1

\* : Inspection Item

**CHOGORI**

PART NO 23XXX535-02

DRAWN BY Liu

DATE 2019/08/13

DWG NO

CHECKED BY M/o

DATE 2019/08/13

CUSTOMER

APPROVED BY Panson

DATE 2019/08/13