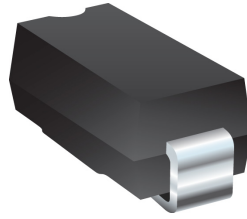




# PRODUCT CHANGE NOTIFICATION

## DIODES



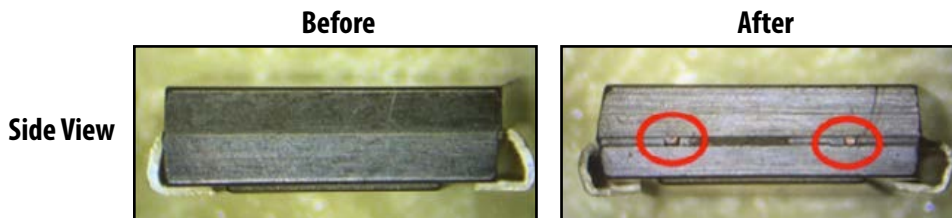
## Automated Assembly Process and Uniform Die Size for Select Bourns® Automotive Grade TVS Diodes

### *Model SM CJ-Q, SMLJ-Q and 1.5SMC-Q Series*

Riverside, California - June 23, 2022 – Effective March 19, 2023, Bourns will start using a uniform die size and an automated assembly process to enhance the quality and production efficiency of select Bourns® Model [SM CJ-Q](#), [SMLJ-Q](#) and [1.5SMC-Q](#) Series Automotive Grade TVS Diodes housed in an SMC package.

The electrical performance of the affected models will continue to meet the existing data sheet specifications for each model. The fit, function and reliability of the affected product will remain the same. Packaging dimensions for the affected products will remain the same.

The changes will affect the form of the product, as depicted below. With the new process, tie bars will be visible at the side of the package, but there is no internal connection between these tie bars.



A list of affected part numbers is provided on the following pages. Samples are available upon request.

#### Implementation dates are as follows:

Date that manufacturing of existing products will cease: **March 19, 2023**

Date that deliveries of modified products will begin: **March 20, 2023**

First date code using the above changes: **312**

If you have any questions or need additional information, please feel free to [contact Customer Service/Inside Sales](#).

Users should verify that the described changes will not impact the performance of the product in their specific applications.

ESD2231

Affected Part Numbers							
SMCJ-Q Series							
SMCJ5.0A-Q	SMCJ13A-Q	SMCJ30A-Q	SMCJ64A-Q	SMCJ5.0CA-Q	SMCJ13CA-Q	SMCJ30CA-Q	SMCJ64CA-Q
SMCJ6.0A-Q	SMCJ14A-Q	SMCJ33A-Q	SMCJ70A-Q	SMCJ6.0CA-Q	SMCJ14CA-Q	SMCJ33CA-Q	SMCJ70CA-Q
SMCJ6.5A-Q	SMCJ15A-Q	SMCJ36A-Q	SMCJ75A-Q	SMCJ6.5CA-Q	SMCJ15CA-Q	SMCJ36CA-Q	SMCJ75CA-Q
SMCJ7.0A-Q	SMCJ16A-Q	SMCJ40A-Q	SMCJ78A-Q	SMCJ7.0CA-Q	SMCJ16CA-Q	SMCJ40CA-Q	SMCJ78CA-Q
SMCJ7.5A-Q	SMCJ17A-Q	SMCJ43A-Q	SMCJ85A-Q	SMCJ7.5CA-Q	SMCJ17CA-Q	SMCJ43CA-Q	SMCJ85CA-Q
SMCJ8.0A-Q	SMCJ18A-Q	SMCJ45A-Q	SMCJ90A-Q	SMCJ8.0CA-Q	SMCJ18CA-Q	SMCJ45CA-Q	SMCJ90CA-Q
SMCJ8.5A-Q	SMCJ20A-Q	SMCJ48A-Q	SMCJ100A-Q	SMCJ8.5CA-Q	SMCJ20CA-Q	SMCJ48CA-Q	SMCJ100CA-Q
SMCJ9.0A-Q	SMCJ22A-Q	SMCJ51A-Q	SMCJ110A-Q	SMCJ9.0CA-Q	SMCJ22CA-Q	SMCJ51CA-Q	SMCJ110CA-Q
SMCJ10A-Q	SMCJ24A-Q	SMCJ51A-Q	SMCJ120A-Q	SMCJ10CA-Q	SMCJ24CA-Q	SMCJ54CA-Q	SMCJ120CA-Q
SMCJ11A-Q	SMCJ26A-Q	SMCJ58A-Q		SMCJ11CA-Q	SMCJ26CA-Q	SMCJ58CA-Q	
SMCJ12A-Q	SMCJ28A-Q	SMCJ60A-Q		SMCJ12CA-Q	SMCJ28CA-Q	SMCJ60CA-Q	

Affected Part Numbers			
SMLJ-Q Series			
SMLJ12A-Q	SMLJ28A-Q	SMLJ12CA-Q	SMLJ28CA-Q
SMLJ13A-Q	SMLJ30A-Q	SMLJ13CA-Q	SMLJ30CA-Q
SMLJ14A-Q	SMLJ33A-Q	SMLJ14CA-Q	SMLJ33CA-Q
SMLJ15A-Q	SMLJ36A-Q	SMLJ15CA-Q	SMLJ36CA-Q
SMLJ16A-Q	SMLJ40A-Q	SMLJ16CA-Q	SMLJ40CA-Q
SMLJ17A-Q	SMLJ43A-Q	SMLJ17CA-Q	SMLJ43CA-Q
SMLJ18A-Q	SMLJ45A-Q	SMLJ18CA-Q	SMLJ45CA-Q
SMLJ20A-Q	SMLJ48A-Q	SMLJ20CA-Q	SMLJ48CA-Q
SMLJ22A-Q	SMLJ51A-Q	SMLJ22CA-Q	SMLJ51CA-Q
SMLJ24A-Q	SMLJ54A-Q	SMLJ24CA-Q	SMLJ54CA-Q
SMLJ26A-Q	SMLJ58A-Q	SMLJ26CA-Q	SMLJ58CA-Q

Affected Part Numbers					
1.5SMC-Q Series					
1.5SMC6.8A-Q	1.5SMC20A-Q	1.5SMC56A-Q	1.5SMC6.8CA-Q	1.5SMC20CA-Q	1.5SMC56CA-Q
1.5SMC7.5A-Q	1.5SMC22A-Q	1.5SMC62A-Q	1.5SMC7.5CA-Q	1.5SMC22CA-Q	1.5SMC62CA-Q
1.5SMC8.2A-Q	1.5SMC24A-Q	1.5SMC68A-Q	1.5SMC8.2CA-Q	1.5SMC24CA-Q	1.5SMC68CA-Q
1.5SMC9.1A-Q	1.5SMC27A-Q	1.5SMC75A-Q	1.5SMC9.1CA-Q	1.5SMC27CA-Q	1.5SMC75CA-Q
1.5SMC10A-Q	1.5SMC30A-Q	1.5SMC82A-Q	1.5SMC10CA-Q	1.5SMC30CA-Q	1.5SMC82CA-Q
1.5SMC11A-Q	1.5SMC33A-Q	1.5SMC91A-Q	1.5SMC11CA-Q	1.5SMC33CA-Q	1.5SMC91CA-Q
1.5SMC12A-Q	1.5SMC36A-Q	1.5SMC100A-Q	1.5SMC12CA-Q	1.5SMC36CA-Q	1.5SMC100CA-Q
1.5SMC13A-Q	1.5SMC39A-Q	1.5SMC110A-Q	1.5SMC13CA-Q	1.5SMC39CA-Q	1.5SMC110CA-Q
1.5SMC15A-Q	1.5SMC43A-Q	1.5SMC120A-Q	1.5SMC15CA-Q	1.5SMC43CA-Q	1.5SMC120CA-Q
1.5SMC16A-Q	1.5SMC47A-Q	1.5SMC130A-Q	1.5SMC16CA-Q	1.5SMC47CA-Q	1.5SMC130CA-Q
1.5SMC18A-Q	1.5SMC51A-Q		1.5SMC18CA-Q	1.5SMC51CA-Q	