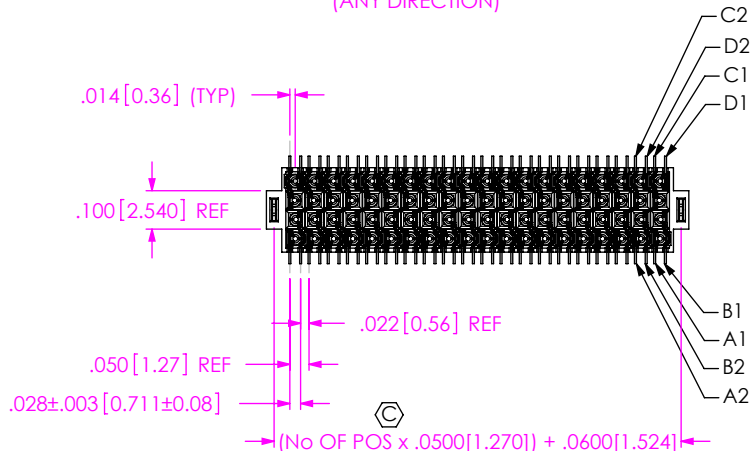
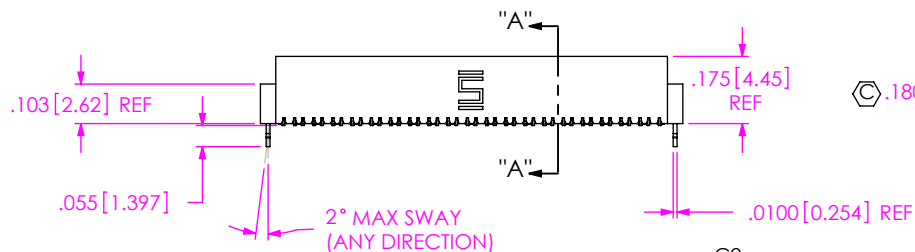
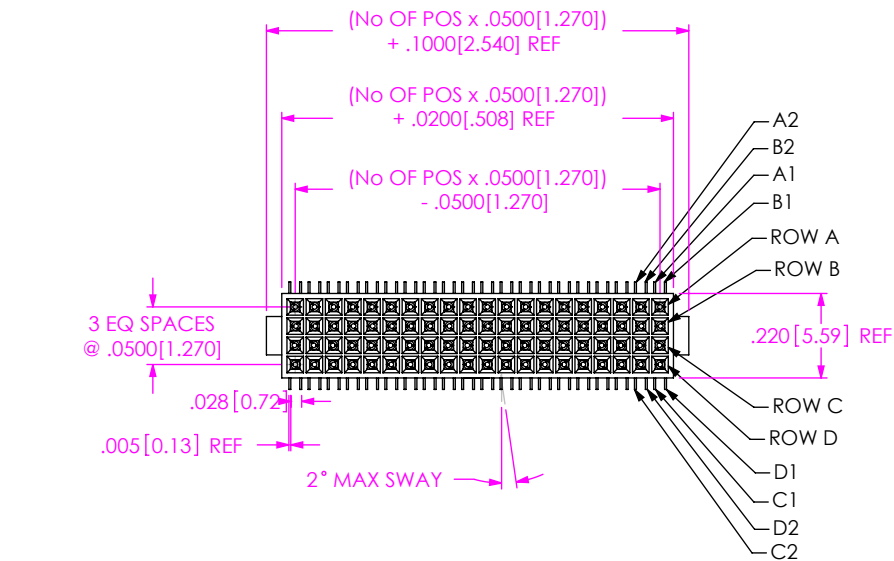


DO NOT SCALE FROM THIS PRINT



ROLC-1XX-XX-XX-Q-XX-X

No OF POSITIONS
-05 THRU -50 (PER ROW)
[IN MULTIPLES OF 5]

LEAD STYLE

-02: SURFACE MOUNT
(USE C-138-XX)
-L2: LOW INSERTION FORCE
SURFACE MOUNT
(USE C-138L-XX)

PLATING SPECIFICATION

-S: SELECTIVE, .000030 GOLD
ON POST, TIN ON TAIL
(USE C-138X-S)
-L: LIGHT SELECTIVE, .000010
GOLD ON POST, MATTE TIN
TAILS (USE C-138X-L)
-SM: SELECTIVE, .000030 GOLD
ON POST, MATTE TIN TAILS
(USE C-138X-S)

OPTION

-P: PICK & PLACE PAD
(USE PPP-18, SEE FIG 3, SHT 2)
-TR: TAPE & REEL
-K: POLYIMIDE FILM
(USE K-500-300, SEE FIG 4, SHT 2)
* -N: POLARIZED NOTCH BODY
(USE NQRS-XX-Q-N, SEE FIG 5, SHT 2)
(ONLY AVAILABLE FOR -LC OPTION)

*** NOT RELEASED FOR PRODUCTION**

OPTION

-LC: LOCKING CLIP
(SEE FIG 1)
-LCR: LOCKING CLIP REVERSED
(USE NQRS-XX-Q-LCR,
SEE FIG 2, SHT 2)

ROW SPECIFICATION

-Q: QUAD (USE NQRS-XX-Q)

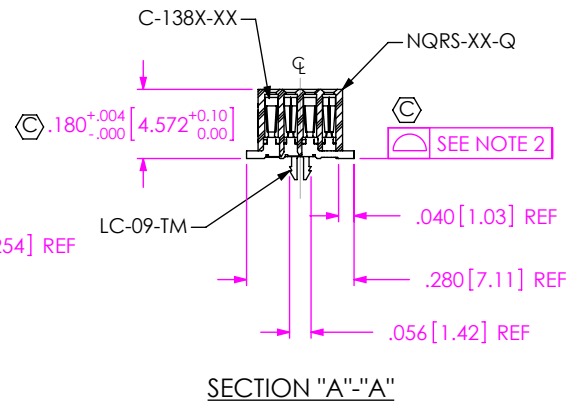
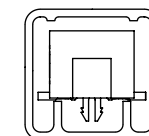
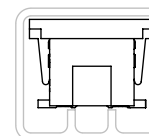


FIG 1
-LC OPTION SHOWN

OPTION	PACKAGING TUBE	PLUG
NONE, -K, -LC-K	PT-1-24-11-63	TP-09
-P	PT-1-24-04-38	TP-03



PT-1-24-11-63



PT-1-24-04-38

PACKAGING VIEW

NOTES:

- ⊗ REPRESENTS A CRITICAL DIMENSION.
- COPLANARITY TO BE WITHIN .006[0.15]
- MAXIMUM BURR ALLOWANCE: .0015[0.038]
- MINIMUM PUSHOUT FORCE: .5 LB
- MAXIMUM ALLOWABLE BOW: .002[0.05] INCH/INCH AFTER ASSEMBLY.

UNLESS OTHERWISE SPECIFIED,
DIMENSIONS ARE IN INCHES.

TOLERANCES ARE:

DECIMALS ANGLES
.XX: ±.01[0.3] 2°
.XXX: ±.005[0.13]
.XXXX: ±.0020[0.051]

PROPRIETARY NOTE

THIS DOCUMENT CONTAINS CONFIDENTIAL AND PROPRIETARY INFORMATION AND ALL DESIGN, MANUFACTURING, REPRODUCTION, USE, PATENT RIGHTS AND SALES RIGHTS ARE EXPRESSLY RESERVED BY SAMTEC, INC. THIS DOCUMENT SHALL NOT BE DISCLOSED, IN WHOLE OR PART, TO ANY UNAUTHORIZED PERSON OR ENTITY NOR REPRODUCED, TRANSFERRED OR INCORPORATED IN ANY OTHER PROJECT IN ANY MANNER WITHOUT THE EXPRESS WRITTEN CONSENT OF SAMTEC, INC.

MATERIAL: DO NOT SCALE DRAWING SHEET SCALE: 2:1
INSULATOR: LCP, COLOR: BLACK
CONTACT: BeCu

DESCRIPTION: .050 QUAD ROW ROLC ASSEMBLY

DWG. NO. ROLC-1XX-XX-XX-Q-XX-X

BY: DEAN P 2/20/1999 SHEET 1 OF 2



520 PARK EAST BLVD, NEW ALBANY, IN 47150
PHONE: 812-944-6733 FAX: 812-948-5047
e-Mail: info@SAMTEC.com code: 55322

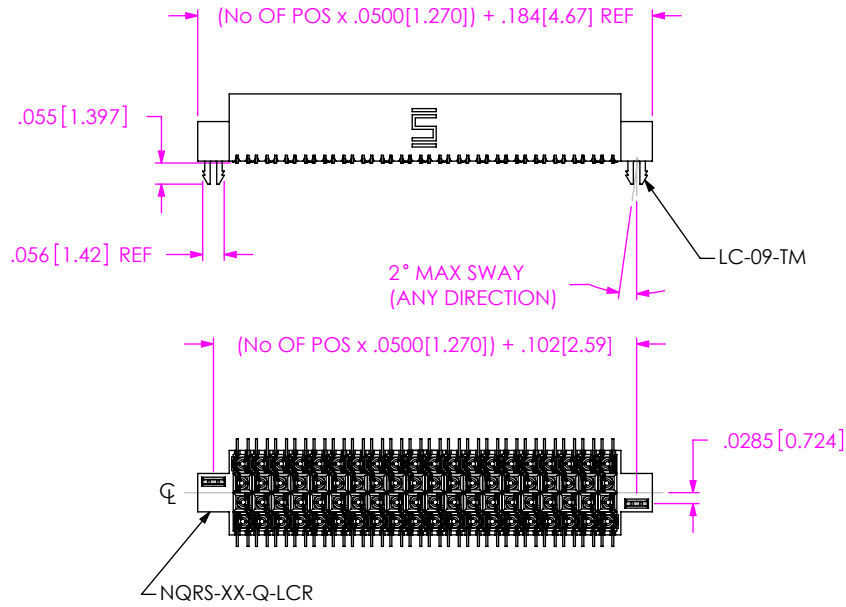


FIG 2
-LCR: LOCKING CLIP REVERSED
[DIFFERENT AS SHOWN, OTHERWISE SAME AS FIG 1]

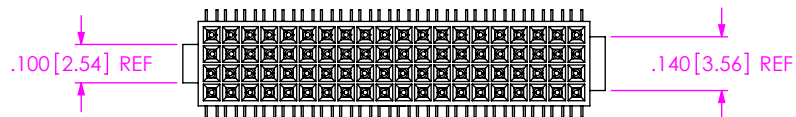
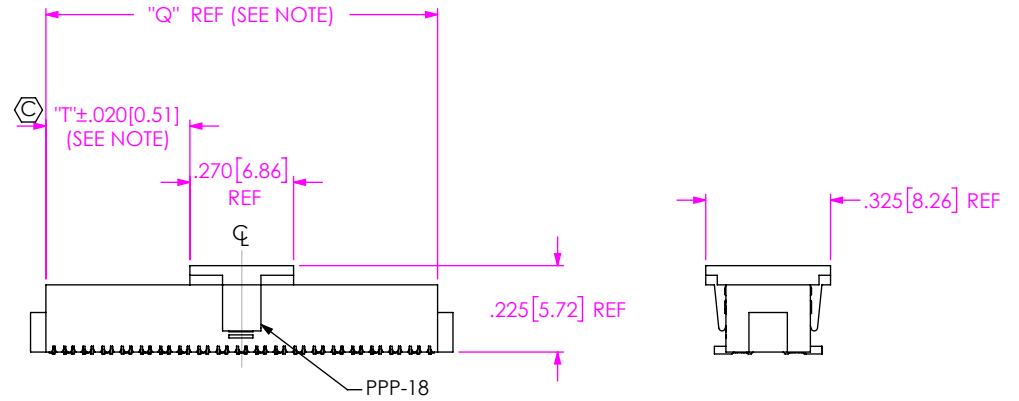


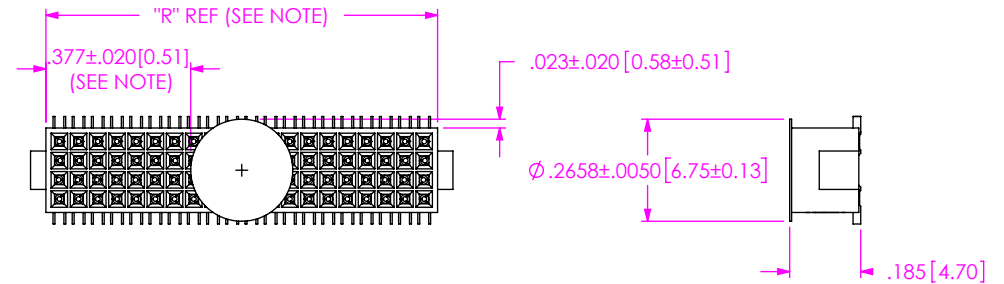
FIG 5
-N: POLARIZED NOTCH BODY
[DIFFERENT AS SHOWN, OTHERWISE SAME AS FIG. 1]
(ONLY AVAILABLE FOR -LC OPTION)

NOT RELEASED FOR PRODUCTION



NOTE: "Q" = USE MEASURED DIMENSION (REF)
"T" = (("Q" - .270[5.72]) / 2) ± .020[0.51]

FIG 3
-P: P: PLACE PAD
[USE PPP-18]



NOTE: "R" = USE MEASURED DIMENSION (REF)
"S" = (("R" - .2658[6.751]) / 2) ± .020[0.51]

FIG 4
-K: POLYIMIDE FILM PAD
[USE K-500-300]

PROPRIETARY NOTE

THIS DOCUMENT CONTAINS CONFIDENTIAL AND PROPRIETARY INFORMATION AND ALL DESIGN, MANUFACTURING, REPRODUCTION, USE, PATENT RIGHTS AND SALES RIGHTS ARE EXPRESSLY RESERVED BY SAMTEC, INC. THIS DOCUMENT SHALL NOT BE DISCLOSED, IN WHOLE OR PART, TO ANY UNAUTHORIZED PERSON OR ENTITY NOR REPRODUCED, TRANSFERRED OR INCORPORATED IN ANY OTHER PROJECT IN ANY MANNER WITHOUT THE EXPRESS WRITTEN CONSENT OF SAMTEC, INC.

DO NOT SCALE DRAWING

SHEET SCALE: 2:1



520 PARK EAST BLVD, NEW ALBANY, IN 47150
PHONE: 812-944-6733 FAX: 812-948-5047
e-Mail: info@SAMTEC.com code: 55322

DESCRIPTION: .050 QUAD ROW ROLC ASSEMBLY

DWG. NO. ROLC-1XX-XX-XX-Q-XX-X

BY: DEAN P 2/20/1999 SHEET 2 OF 2