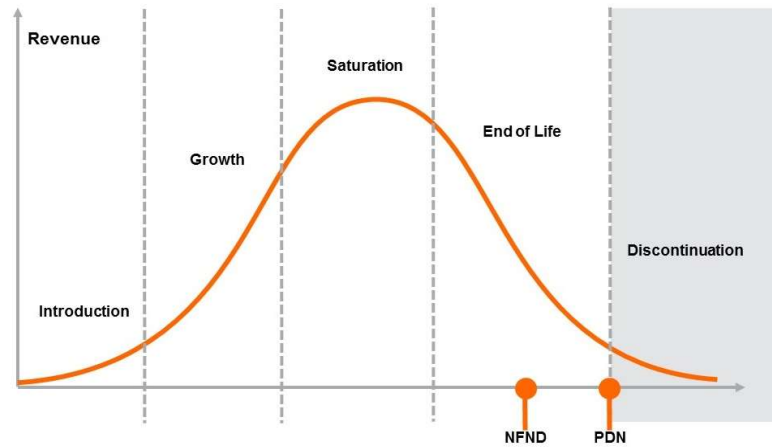


Light is OSRAM

Product Or Individual Q-Code Discontinuation (acc. JEDEC J-STD-048)
OS-PDN-2020-009

3-Feb-2020

Last order: 03 August 2020
Last delivery: 03 February 2021



Please direct your feedback to your local Sales office.

DISCONTINUED				NEW (REPLACEMENT)		
Device	Ordering Code	Brand	Reason for discontinuation	Device	Datasheet Ordering Code	Brand
GW PSLR31.PM-LXLY-XX53-DF-150-R18-S	Q65112A6333	DURIS	Revision of product performance: Unsupportable bin.	GW PSLR31.PM-LYL2-XX53-1-150-R18	Q65113A0297	DURIS

Products Affected by Product Discontinuation Notification

Number: OS-PDN-2020-009

Name: Product Discontinuation of Unsupportable Bin

Release Date: 2/3/2020

Last Order: 8/3/2020

Last Delivery: 2/3/2021

DISCONTINUED

NEW (REPLACEMENT)

<i>Product</i>	<i>QNumber</i>	<i>QNumber Description</i>	<i>Part Number</i>	<i>Product</i>	<i>QNumber</i>	<i>QNumber Description</i>	<i>Part Number</i>
GW PSLR31.	Q65112A6333	GW PSLR31.PM-LXLY-XX53-DF-150-R18-S		GW PSLR31.	Q65113A0297	GW PSLR31.PM-LYL2-XX53-1-150-R18	