

## PCN – Process Change Notification

Change:	AA.160 Series
Date:	2018/02//06
Author	Haley Tsai

### Affected Products

Model#	Part Number	Changes
AA.160 Series	-	<ol style="list-style-type: none"> <li>1. Amend material P/N.</li> <li>2. One of components is EOL, so we will use another one instead. This change will not affect electrical characteristics.</li> <li>3. Amend package. 1PCS/ (Circle winding)PE Bag, 2PCS/ Lattice, 100PCS/ Carton (630x460x105mm)</li> <li>4. Amend dimension R10 to R6 on the front view. We found the value of R corner in 2D drawing were incorrect after compare with 3D product tool drawing, so we need to update the drawing. There are no changes for the product. It is already R6 on the front view.</li> <li>5. Amend dimension R10 to R8 on the side view. We found the value of R corner in 2D drawing were incorrect after compare with 3D product tool drawing, so we need to update the drawing. There are no changes for the product. It is already R8 on the side view.</li> <li>6. Remove dimension 2.75, 3.75 4.5, 0.92, 10.5mm from EDW drawing.</li> <li>7. Remove heat shrink tube's tolerance.</li> <li>8. Amend 8.4mm to 8.5mm.</li> </ol>

### Type of Change

- Hardware Modification  
 Production Process Advance  
 Others –Change package method and component.

## Description of Change

1. Amend material P/N.
2. One of components is EOL, so we will use another one instead. This change will not affect electrical characteristics.
3. Amend package. 1PCS/ (Circle winding)PE Bag, 2PCS/ Lattice, 100PCS/ Carton (630x460x105mm)
4. Amend dimension R10 to R6 on the front view. We found the value of R corner in 2D drawing were incorrect after compare with 3D product tool drawing, so we need to update the drawing. There are no changes for the product. It is already R6 on the front view.
5. Amend dimension R10 to R8 on the side view. We found the value of R corner in 2D drawing were incorrect after compare with 3D product tool drawing, so we need to update the drawing. There are no changes for the product. It is already R8 on the side view.
6. Remove dimension 2.75, 3.75 4.5, 0.92, 10.5mm from EDW drawing.
7. Remove heat shrink tube's tolerance.
8. Amend 8.4mm to 8.5mm. Amend 8.4mm to 8.5mm.

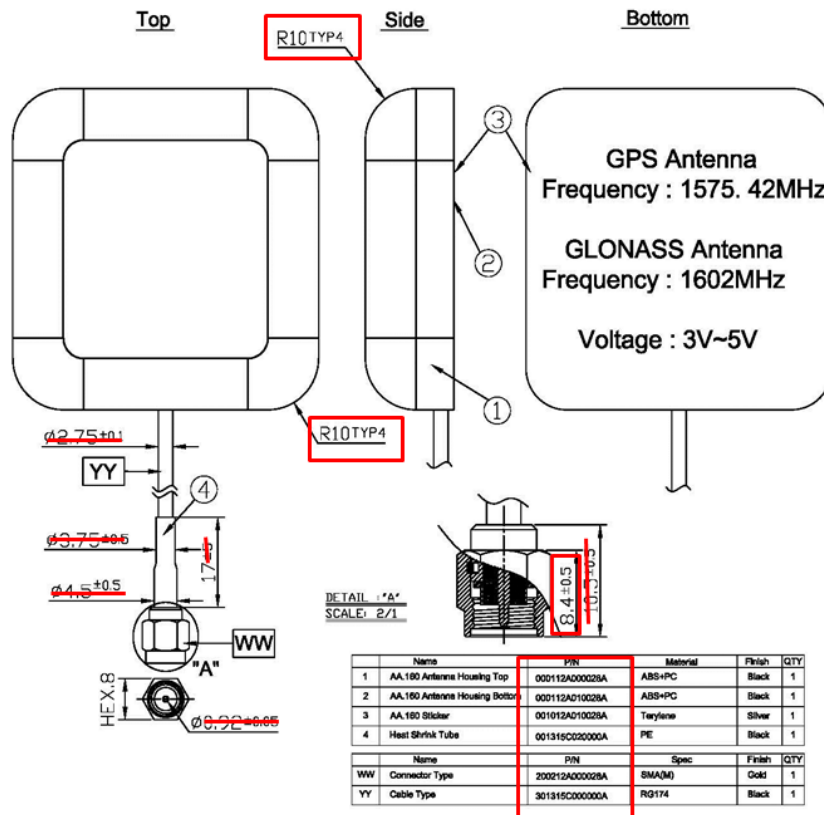
## Schedule

2018, February, Taoglas will provide new drawing and package rule into production.

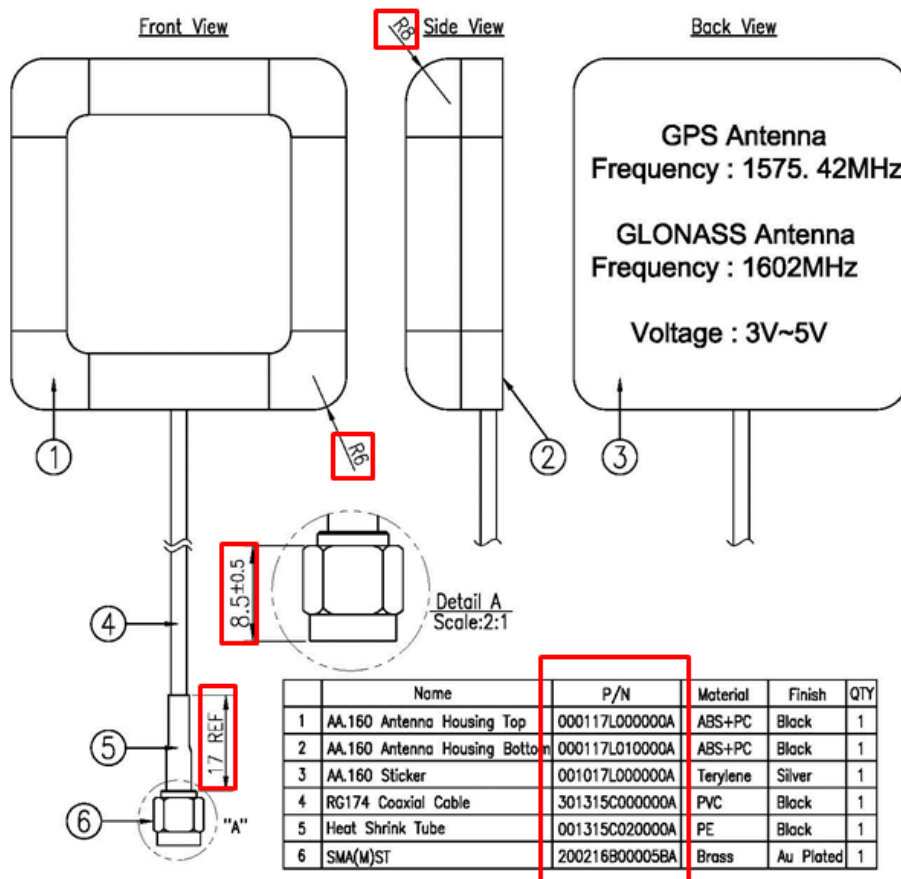
## Forecast Estimated Transition Date

**February /2018**

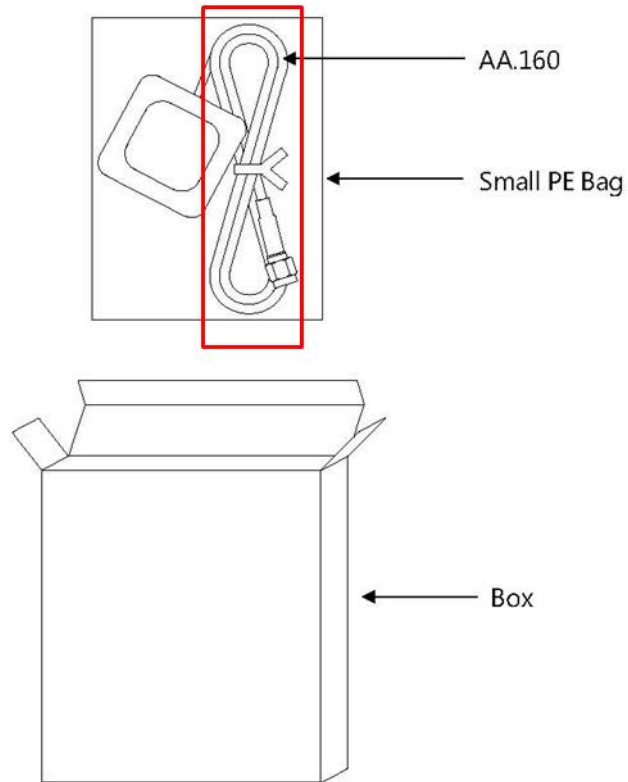
### Illustration of Change Old Drawing



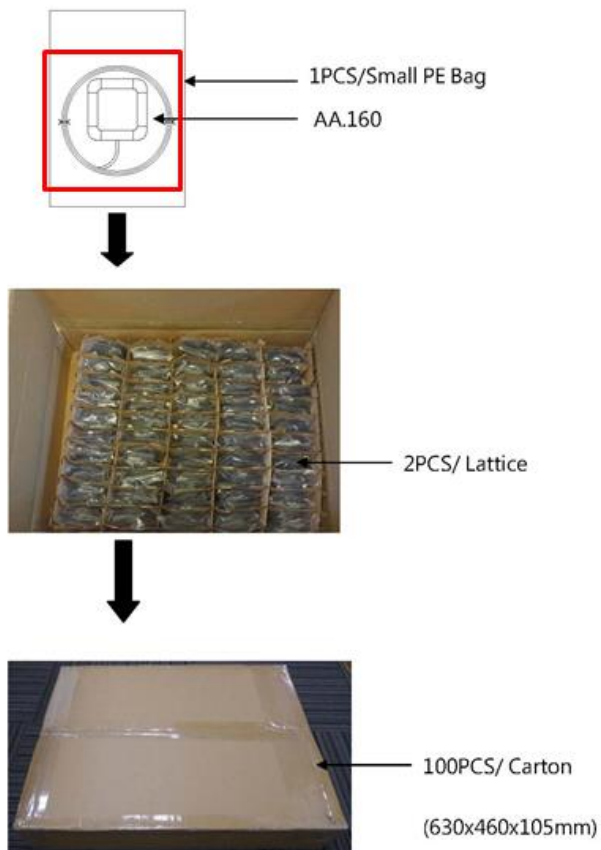
### New Drawing



**Old Package**

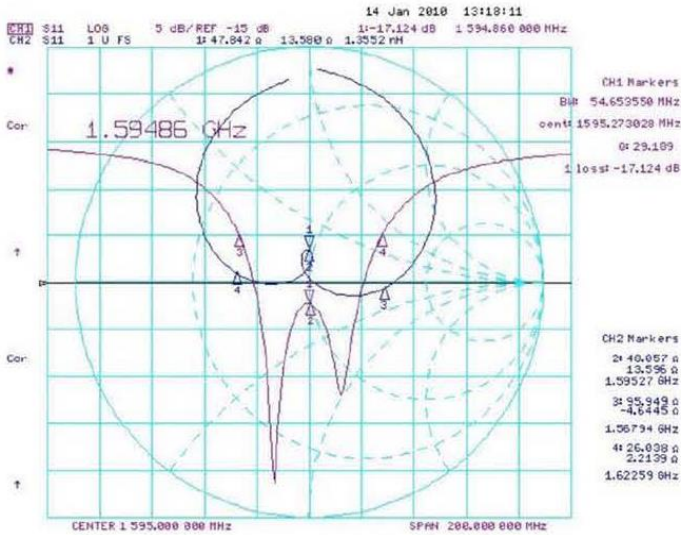


**New Package**

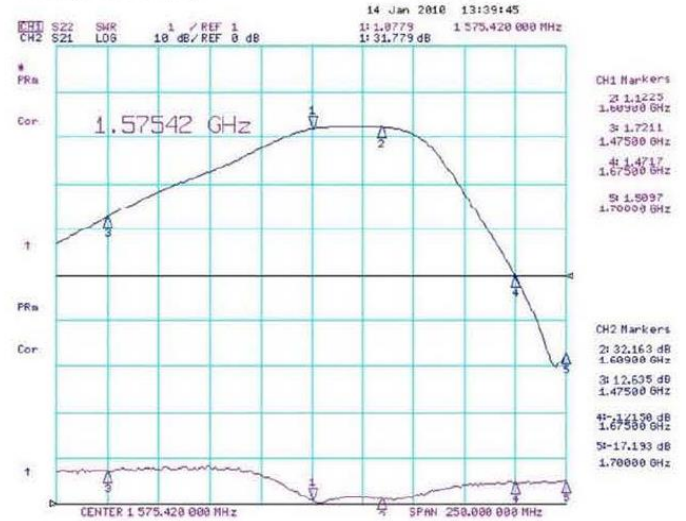


## Electrical Characteristics Comparison Before change

Before (Return loss and Smith chart)

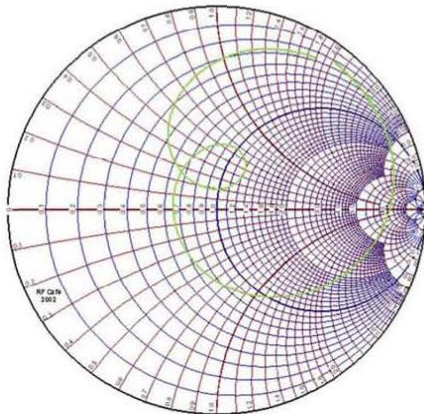
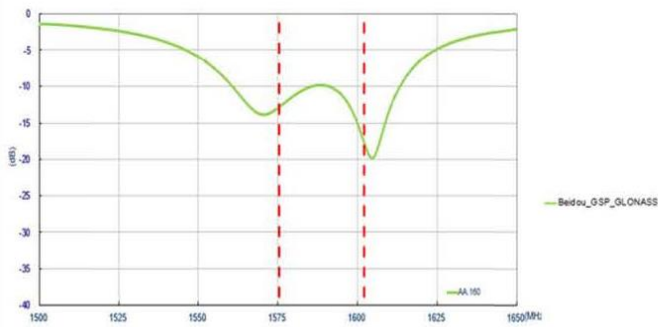


Before (Gain and Noise)

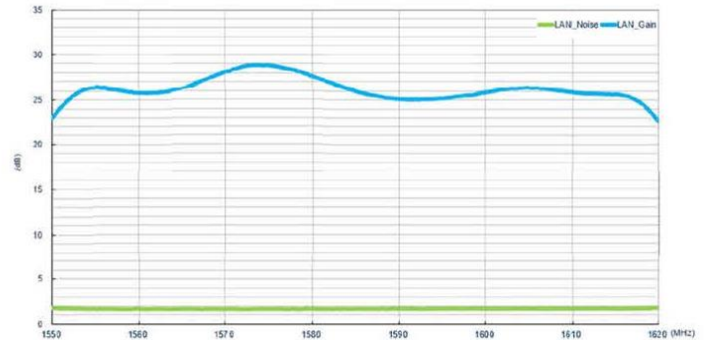


## After change

After (Return loss and Smith chart)



After (Gain and Noise)



	1575.42	1602
Noise	1.69	1.73
Gain	28.76	26.17