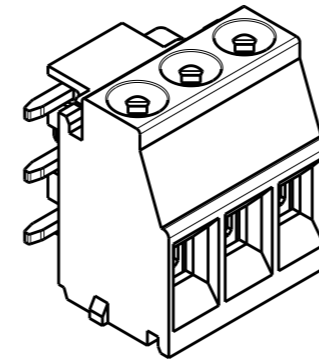


P	LTR	DESCRIPTION	DATE	DWN	APVD
	A	PRODUCTION RELEASE	16JUN2020	SS	PS



1. MATERIALS & FINISH

HOUSING : HIGH TEMPERATURE PA, UL94 V0,
 COLOR -BLACK
 SCREW M3 : COPPER ALLOY, NICKEL PLATED
 CLAMP : COPPER ALLOY, NICKEL PLATED
 CONTACT : COPPER ALLOY, TIN PLATED

2. MECHANICAL

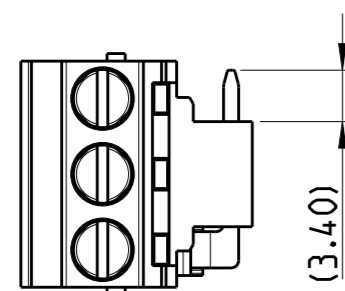
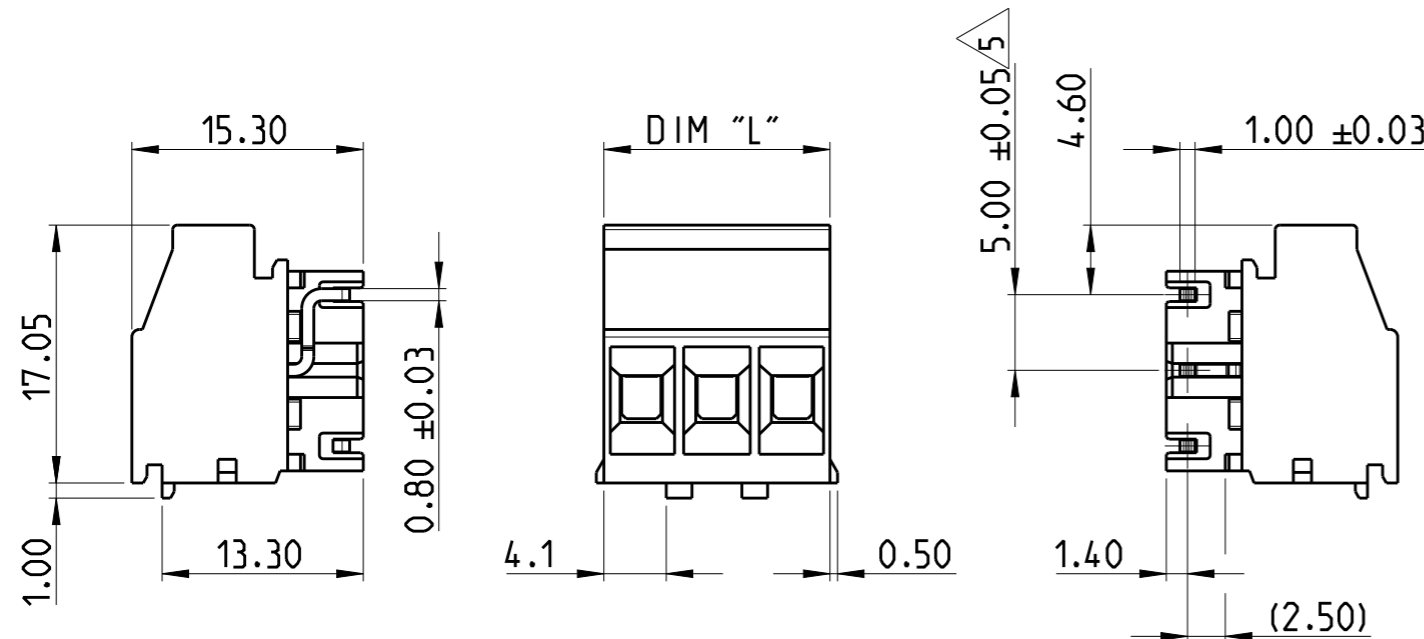
WIRE STRIPPING LENGTH : 5.5-6.5 mm
 MIN. PC BOARD HOLES DIAMETER : 1.4 mm
 MAX. PC BOARD THICKNESS : 2.4 mm
 RECOMMENDED TIGHTENING TORQUE FOR SCREW: 0.5 Nm.

3. ELECTRICAL

WIRE RANGE : 12 - 30 AWG
 MAX. VOLTAGE : 300 V
 MAX. CURRENT : 17.5 A
 CONTACT RESISTANCE : <15 m Ohm
 INSULATION RESISTANCE : >1000 M Ohm (500V DC)

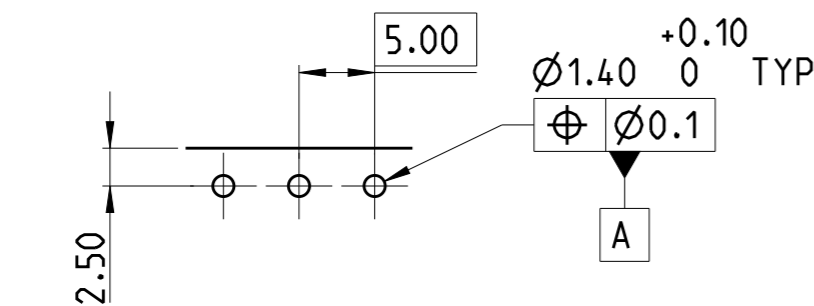
4. OPERATING TEMPERATURE RANGE: -40°C TO +105°C

△ TOLERANCE NOT CUMULATIVE.



AS SHOWN 2363965-3

14.95	3	2363965-3
9.95	2	2363965-2
DIM "L"	POSITION	PART NUMBER



RECOMMENDED PC BOARD LAYOUT

THIS DRAWING IS A CONTROLLED DOCUMENT.		DWN 14OCT2019 RAGHAVENDRA.K		
DIMENSIONS: mm		CHK 14OCT2019 PRASHANTH.S		
TOLERANCES UNLESS OTHERWISE SPECIFIED:		APVD 14OCT2019 PRASHANTH.S	NAME NORMO-ORTHOGONAL LEFT TERMINAL BLOCK PITCH 5.00mm	
0 PLC ±0.3		PRODUCT SPEC	-	
1 PLC ±0.25		APPLICATION SPEC	-	
2 PLC ±0.25		WEIGHT	-	
3 PLC ±		CUSTOMER DRAWING	SCALE 2:1	SHEET 1 OF 1
4 PLC ±		FINISH	REV A	
ANGLES ±		MATERIAL SEE NOTES	SIZE A3	CAGE CODE 00779
		SEE NOTES	DRAWING NO. C-2363965	RESTRICTED TO -